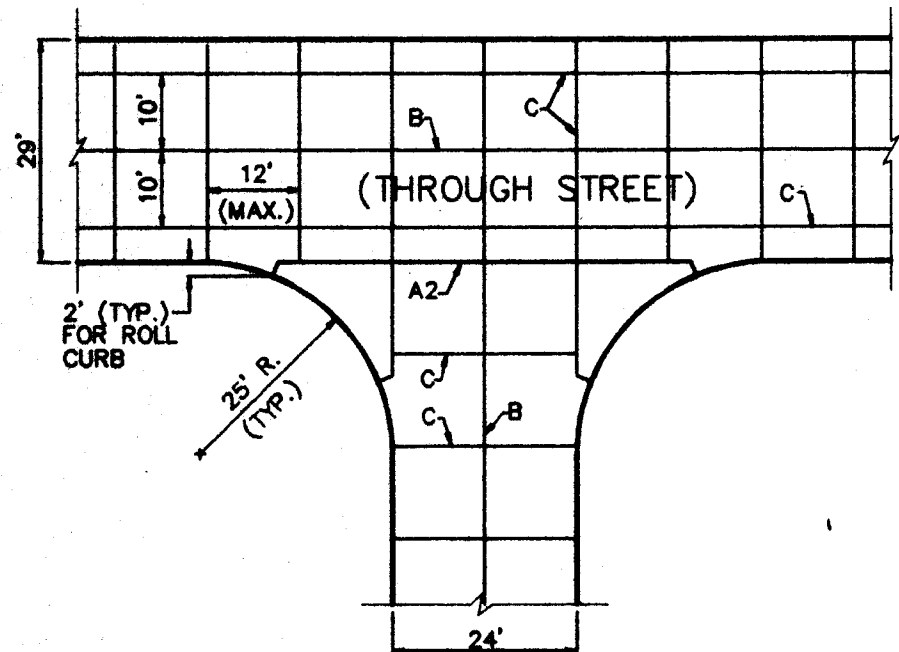
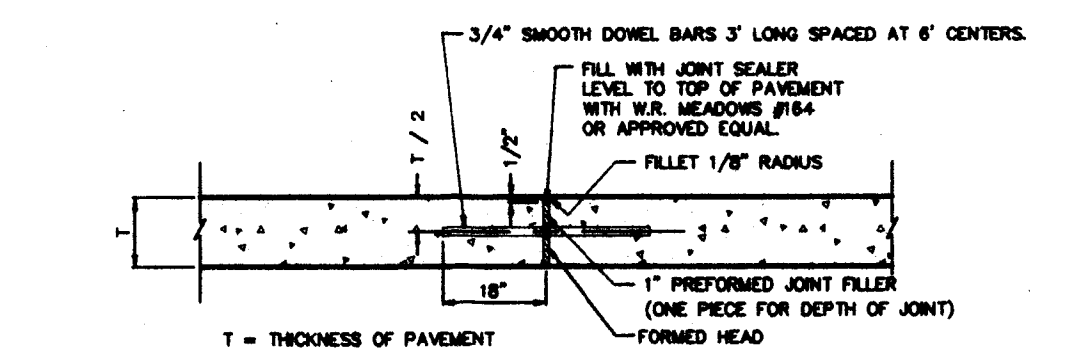


4-WAY INTERSECTION

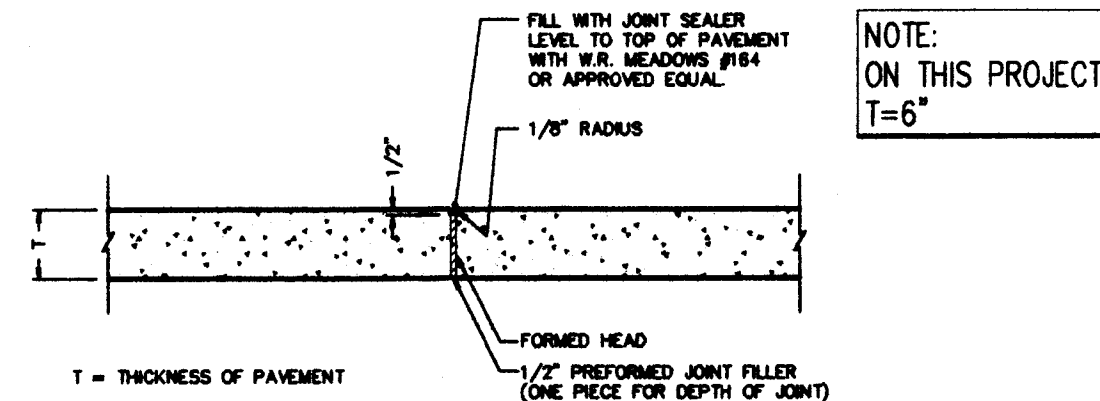


3-WAY INTERSECTION

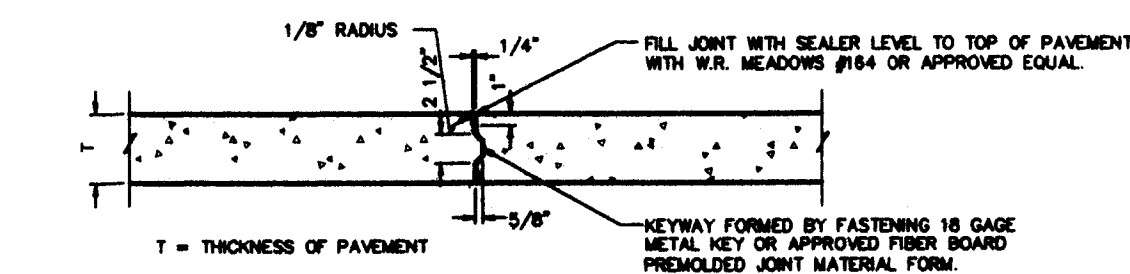
PAVEMENT JOINTS - PLAN
NO SCALE



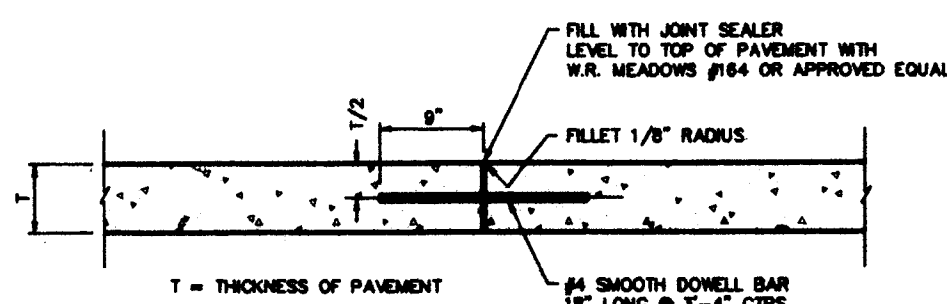
TIED TRANSVERSE EXPANSION JOINT
(TYPE A1 - AT END OF DAYS POUR)
NO SCALE



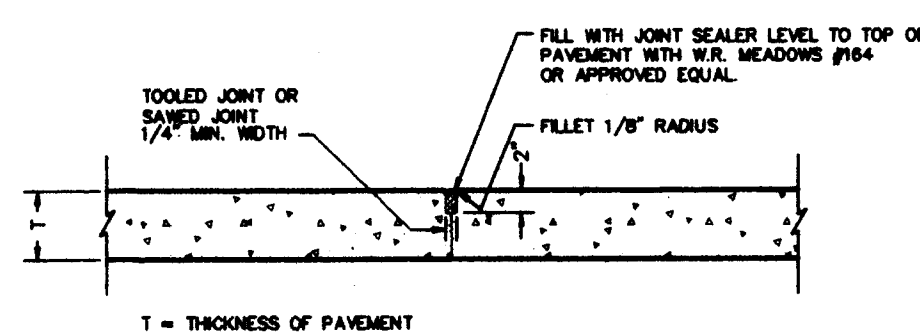
TRANSVERSE EXPANSION JOINT
(TYPE A2 - AT ALL INTERSECTIONS)
NO SCALE



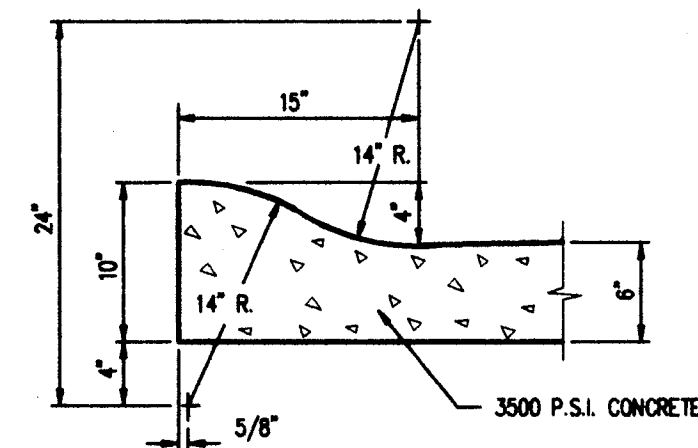
LONGITUDINAL CONSTRUCTION JOINT
(TYPE B1)
NO SCALE



LONGITUDINAL CONSTRUCTION JOINT
(TYPE B2)
NO SCALE



TRANSVERSE CONTRACTION JOINT
(TYPE C)
NO SCALE

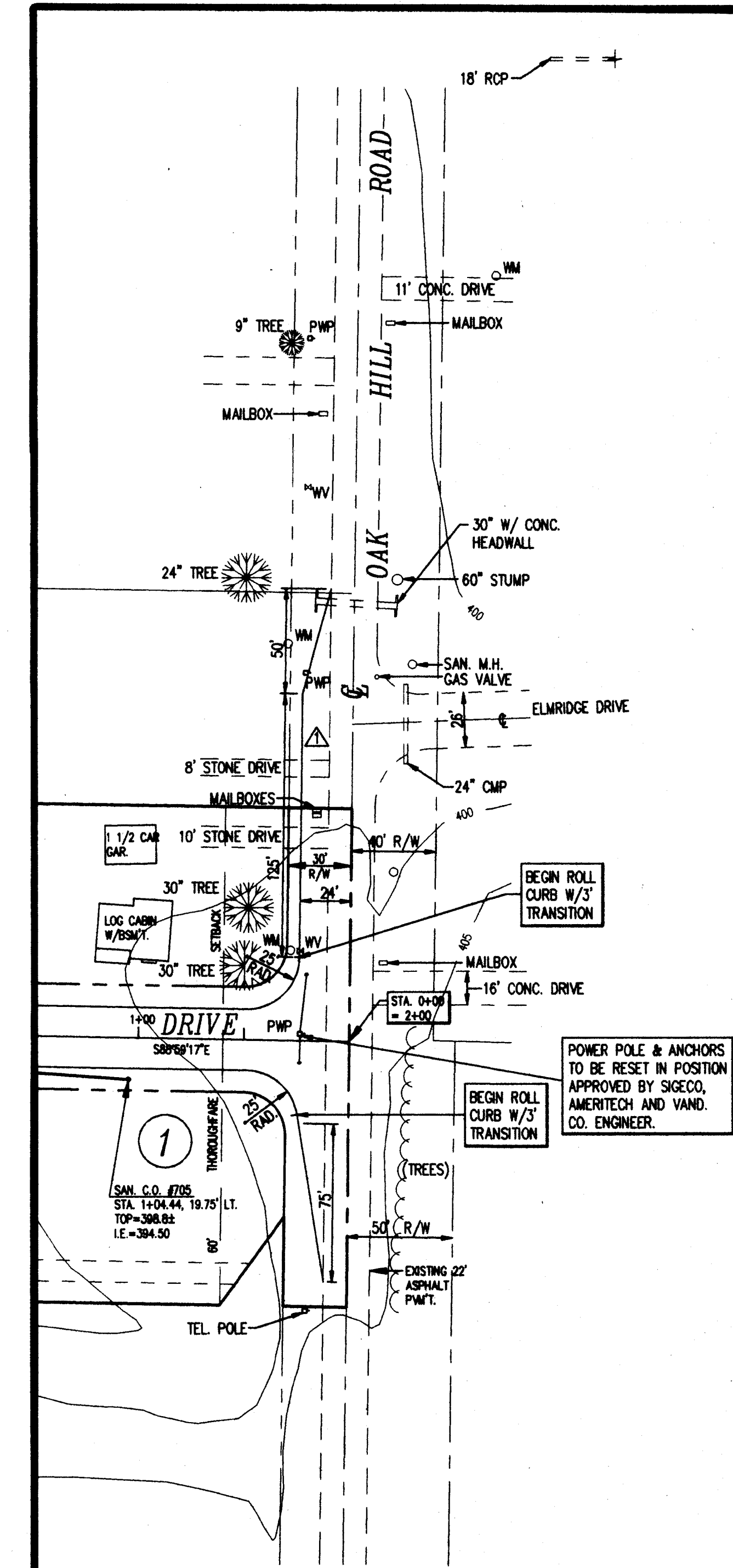


CONCRETE ROLL CURB DETAIL
SCALE: 1"=1'-0"

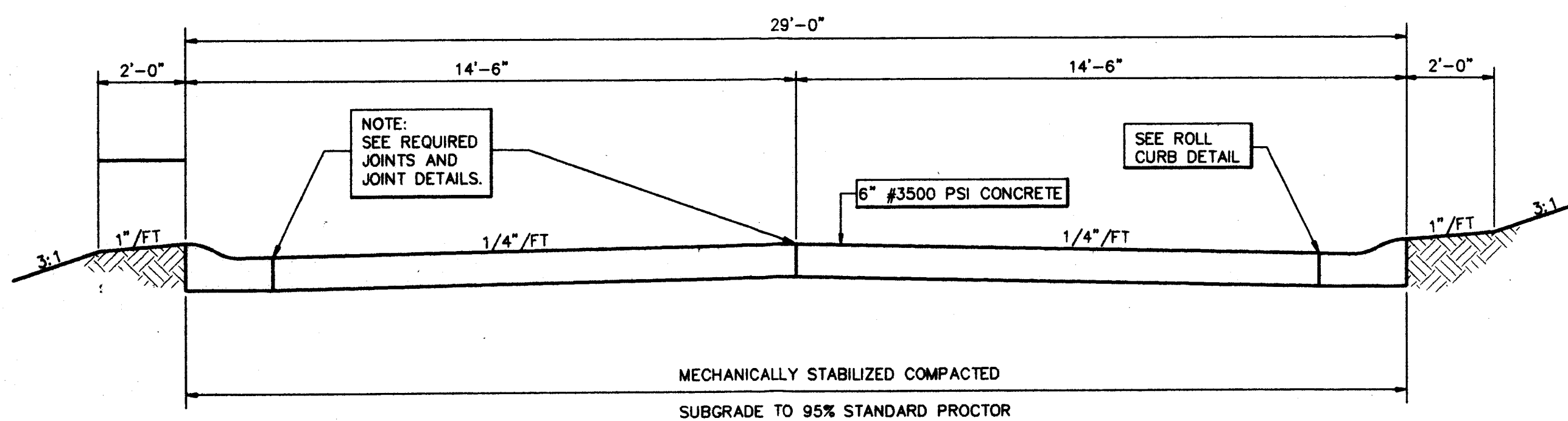
- NOTES
- 1/2" PREFORMED EXPANSION JOINT MATERIAL AT ALL P.C. & P.T. OF CURB RADIUS & MAX. SPACING OF TANGENT SECTIONS = 90°.
 - TOOLED CONTRACTION JOINTS AT 10'-0" CENTERS. CONTRACTION JOINT TO BE MINIMUM 3" DEEP & 1/8" TO 1/4" WIDE.

GENERAL NOTES

- THE FOLLOWING LOCAL GOVERNMENTAL AGENCY SHALL BE NOTIFIED 24 HOURS PRIOR TO BEGINNING WORK AND ON A DAILY BASIS WHEN PERFORMING THE WORK LISTED BELOW:
STORM SEWERS, STREET SUBGRADE, STREETS
VANDERBURGH COUNTY ENGINEER 435-5773
- GENERAL SITE
- WORK COVERS ALL EARTHWORK, SEWERS, PAVING AND OTHER RELATED WORK FOR THE DEVELOPMENT OF "OAKLYNN PARK".
- THE CONTRACTOR SHALL COMPLY WITH ALL LOCAL, STATE AND FEDERAL CODES, ORDINANCES, RULES, REGULATIONS, ORDERS AND OTHER LEGAL REQUIREMENTS OF MUNICIPAL AUTHORITIES WHICH BEAR ON THE PERFORMANCE OF THE WORK.
- ALL FIELD ENGINEERING SHALL BE SUPPLIED BY THE OWNER.
- EXCAVATING
- ROADWAY SUBGRADE COMPACTION TESTS SHALL BE PERFORMED AT CONTRACTORS EXPENSE.
- SUFFICIENT SOIL SAMPLES ARE TO BE TAKEN BY THE CONTRACTOR FROM THE ROADWAY SUBGRADE AFTER THE TOPSOIL IS REMOVED OR FROM BORROW AREAS IN ORDER TO OBTAIN ACCURATE PROCTOR VALUES FOR SUBSEQUENT SUBGRADE DENSITY TESTING.
- SUBGRADE IS TO BE COMPACTED IN ACCORDANCE WITH COUNTY HIGHWAY STANDARDS.
- SUBGRADE DENSITY IS TO BE TESTED AT A MINIMUM OF ONE TEST PER SECTION OF ROADWAY CONNECTED BY AN INTERSECTION. OTHERS MAY BE REQUESTED AT THE DISCRETION OF THE INSPECTOR OR ENGINEER.
- DRAWINGS DO NOT REPRESENT A BALANCE BETWEEN BORROW AND FILL MATERIAL.
- PAVEMENT
- PRODUCT CERTIFICATIONS OR REPORTS ARE TO BE OBTAINED BY THE CONTRACTOR FROM THE CONCRETE SUPPLIER AND MADE AVAILABLE TO THE COUNTY HIGHWAY ENGINEER'S INSPECTOR OR OFFICE.
- ALL CONCRETE TESTS SHALL BE PERFORMED AT CONTRACTOR'S EXPENSE.
- A MINIMUM OF ONE SET (THREE CYLINDERS) OF CONCRETE SAMPLES ARE TO BE TAKEN EACH DAY FOR STRENGTH TESTING. OTHERS MAY BE REQUESTED AT THE DISCRETION OF THE INSPECTOR OR ENGINEER.
- IF NECESSARY, PAVEMENT CORES WILL BE TAKEN AT THE EXPENSE OF CONTRACTOR IN ACCORDANCE WITH IDOH STANDARDS.
- ALL JOINTS AND ANY CRACKS IN THE PAVEMENT SHALL BE FILLED WITH JOINT SEALER.



CONSTRUCTED IN SECTION ONE



CONCRETE PAVEMENT SECTION
NO SCALE

Written dimensions on these drawings shall have precedence over all dimensions and conditions on the job and SITECON, Inc. must be notified of any variations from the dimensions and conditions shown by these drawings.

SITECON, Inc.
Engineers-Surveyors
600 S.E. Eighth Street Suite 2
Evansville, Indiana 47713
(812) 423-2320

OAKLYNN PARK

PAVEMENT DETAILS

Project:

Sheet Title:

Revisions

No.	By	Date	Description
1			
2			
3			
4			

Scale: AS NOTED

Designed By: KJP
Job Number: J-04-7-1
Drawn By: JKW
Date: 12-12-94
Checked By: JKW
Filename: PAVDET.DWG

Sheet Number:
DE-2
of

86-96-14