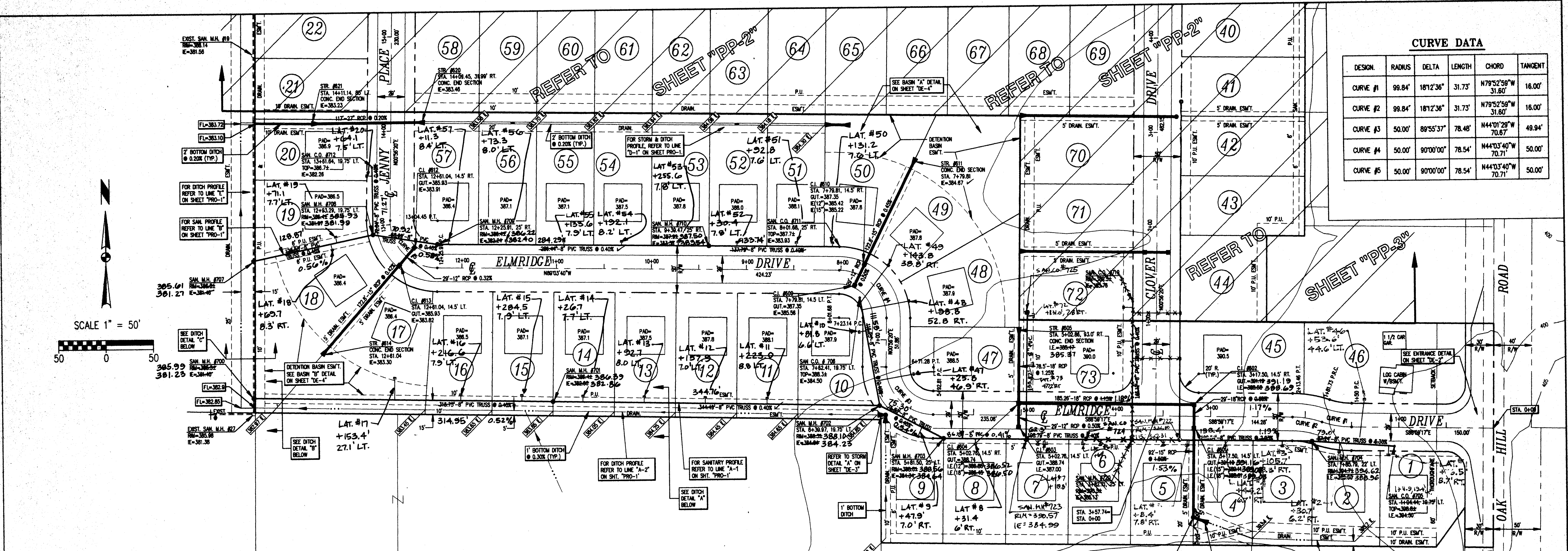
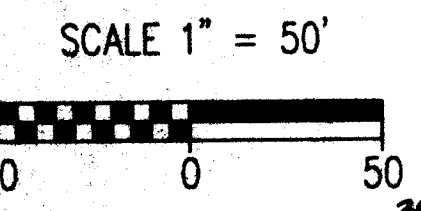
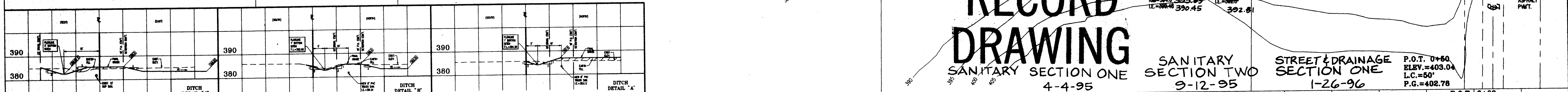


CURVE DATA					
DESIGN	RADIUS	DELTA	LENGTH	CHORD	TANGENT
CURVE #1	99.84'	181°23'	31.73'	N79°52'59" W 31.60'	16.00'
CURVE #2	99.84'	181°23'	31.73'	N79°52'59" W 31.60'	16.00'
CURVE #3	50.00'	89°55'37"	78.48'	N44°01'29" W 70.87'	49.94'
CURVE #4	50.00'	90°00'00"	78.54'	N44°03'40" W 70.71'	50.00'
CURVE #5	50.00'	90°00'00"	78.54'	N44°03'40" W 70.71'	50.00'



RECORD DRAWING



STATION	FINAL ELEVATION	EXISTING ELEVATION	NOTE
15+00	386.19	386.15	
14+50	386.53	386.50	
14+00	386.85	386.80	
13+50	386.88	386.85	
13+00	386.76	386.53	
12+50	386.51	386.51	
12+00	386.38	386.38	
11+50	386.26	386.26	
11+00	386.23	386.23	
10+50	386.14	386.14	
10+00	386.06	386.06	
9+50	386.08	386.08	
9+00	386.08	386.08	
8+50	386.08	386.08	
8+00	386.08	386.08	
7+50	386.08	386.08	
7+00	386.08	386.08	
6+50	386.08	386.08	
6+00	386.08	386.08	
5+50	386.08	386.08	
5+00	386.08	386.08	
4+50	386.08	386.08	
4+00	386.08	386.08	
3+50	386.08	386.08	
3+00	386.08	386.08	
2+50	386.08	386.08	
2+00	386.08	386.08	
1+50	386.08	386.08	
1+00	386.08	386.08	
0+50	386.08	386.08	
0+00	386.08	386.08	

