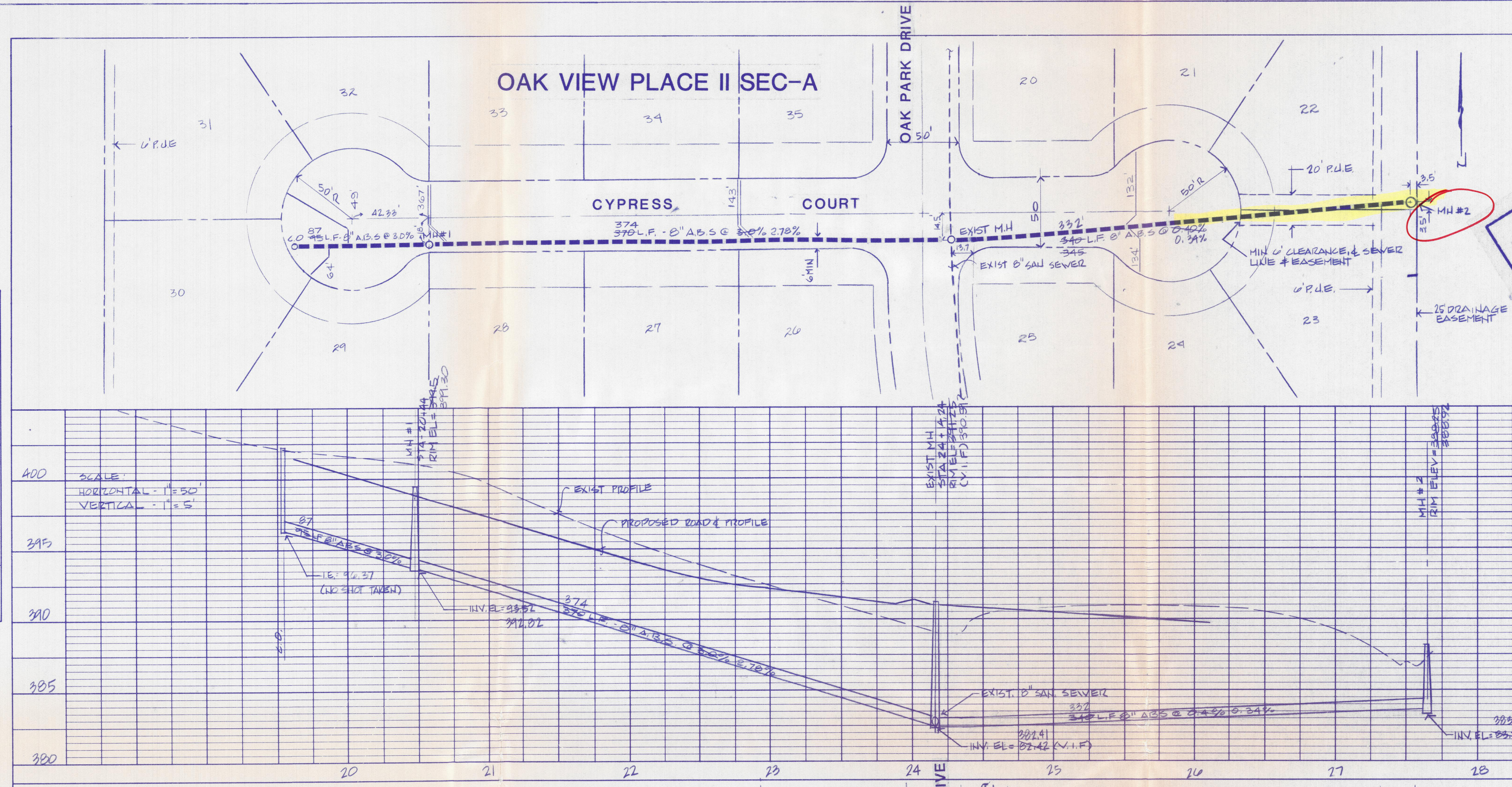


# OAK VIEW PLACE II

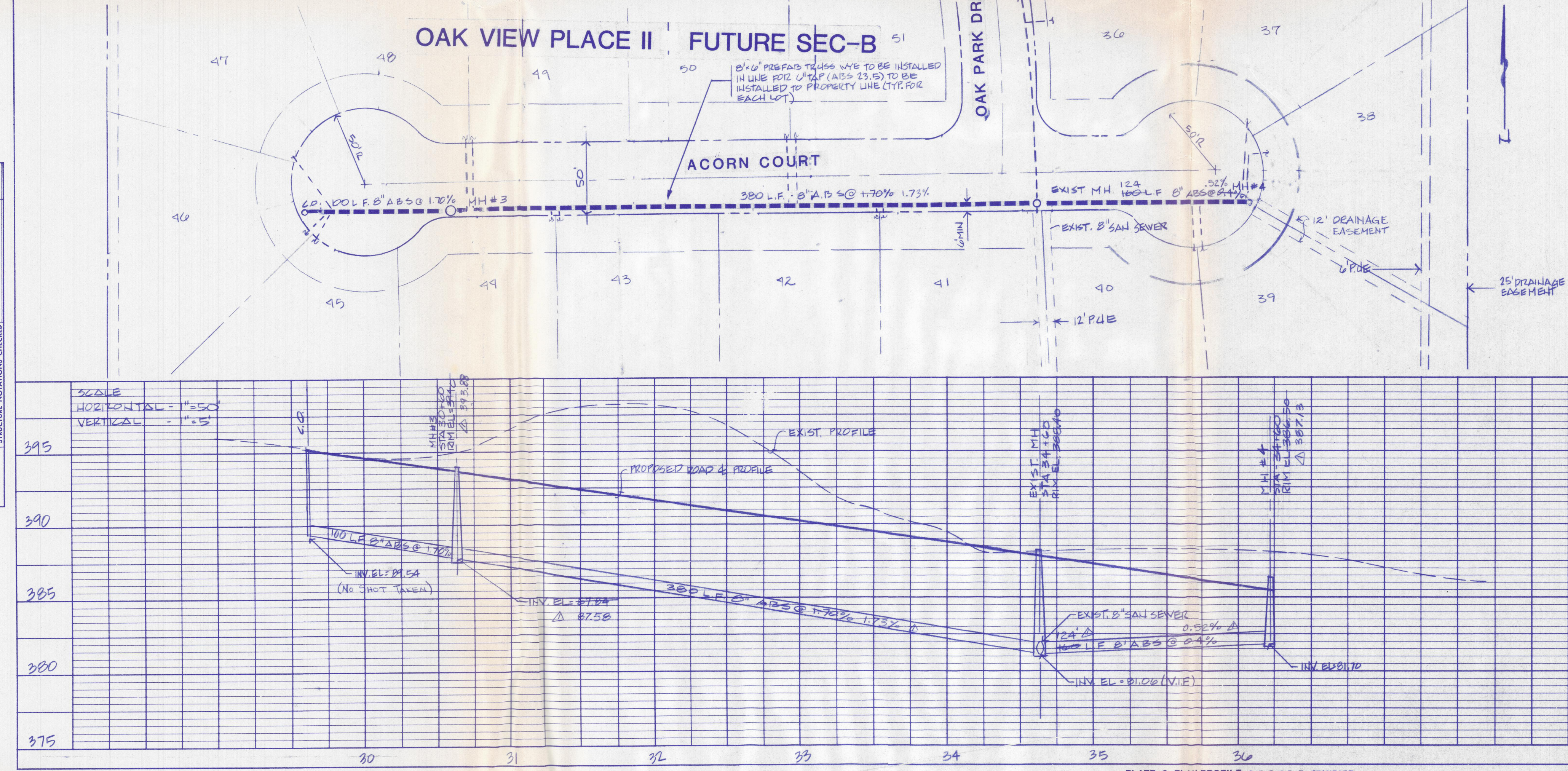
GENERAL SEWER NOTES

1. All manholes shall be in accordance with ASTM C-478, Latest Revision and SK-110A or SK-107 of the City of Evansville Standard Details with the exception that a precast "Moore" type reinforced concrete base shall be used, as manufactured by M & W Concrete Pipe Company, except when height of manhole is less than 4' 11".
2. When manhole is located within paved areas, the manhole frame shall be EJ.1022-3 with an Extra Heavy Duty cover, or approved equal. Lifting holes shall be recessed. When manhole is located in non-paved areas, an EJ 1022-1 frame shall be used with a heavy duty cover. Manhole casting shall be securely fastened to concrete cone section with a bituminous type mastic, or cement mortar material.
3. All manhole joints shall be sealed with a "Kent Seal" type rope with a joint on the inside of manhole rubbed smooth using a non-shrinking grout. In non-paved areas the manhole rim shall be set a minimum of 0.1 foot above finished grade.
4. All sanitary sewer pipe shall be either A.B.S. Truss, P.V.C. SDR 35 or V.C. pipe.
5. All trenches located within 5' 0" of paved areas shall be backfilled with granular material per detail shown on City Standard SK 113A. Bedding for all sewer pipe shall be Class B.
6. All sanitary sewer lines shall be air tested, prior to allowing any connections into said line, in accordance with the Evansville Sewer Department standard specifications. Any failed sections shall be repaired and retested.
7. A complete set of "As Built" plans shall be furnished to Sewer Department and City Engineer's office.
8. Backfill composition for trenches located beyond 5' 0" of paved areas can be backfilled with natural material and in accordance with City Standard SK-114-B. All 6" pipe located within the right-of-way shall be Schedule 20 A.B.S. pipe.
9. ALL MAT'L USED SHALL BE IN ACCORDANCE WITH CITY OF EVANSVILLE STANDARD SPECIFICATIONS.

**CONSTRUCTION RECORD DRAWING**  
 BASED ON FIELD INFORMATION  
 OBTAINED ON: JAN. 7, 1988  
 SECTION A ONLY



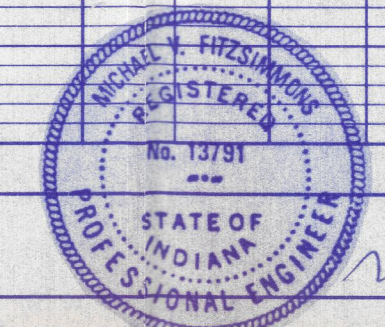
PLAN	SUBMITTED BY	DATE
	NOTE BOOK	ALIGNMENT CHECKED
PROFILE	CONFORMS CHECKED	DATE
	E. & V. NOTED	STRUCTURE NOTATIONS CHECKED



PLAN	SUBMITTED BY	DATE
	NOTE BOOK	ALIGNMENT CHECKED
PROFILE	CONFORMS CHECKED	DATE
	E. & V. NOTED	STRUCTURE NOTATIONS CHECKED

**CONSTRUCTION RECORD DRAWING**  
 BASED ON FIELD INFORMATION  
 OBTAINED ON: MAR. 12, 1990  
 SEC. B

- △ REVISION 3-29-90
- △ REVISION 11-12-90



**AE**  
**ANDY EASLEY ENGINEERING**  
 CIVIL ENGINEERING  
 1133 W. MILL ROAD  
 EVANSVILLE, INDIANA 47710

SHEET 7