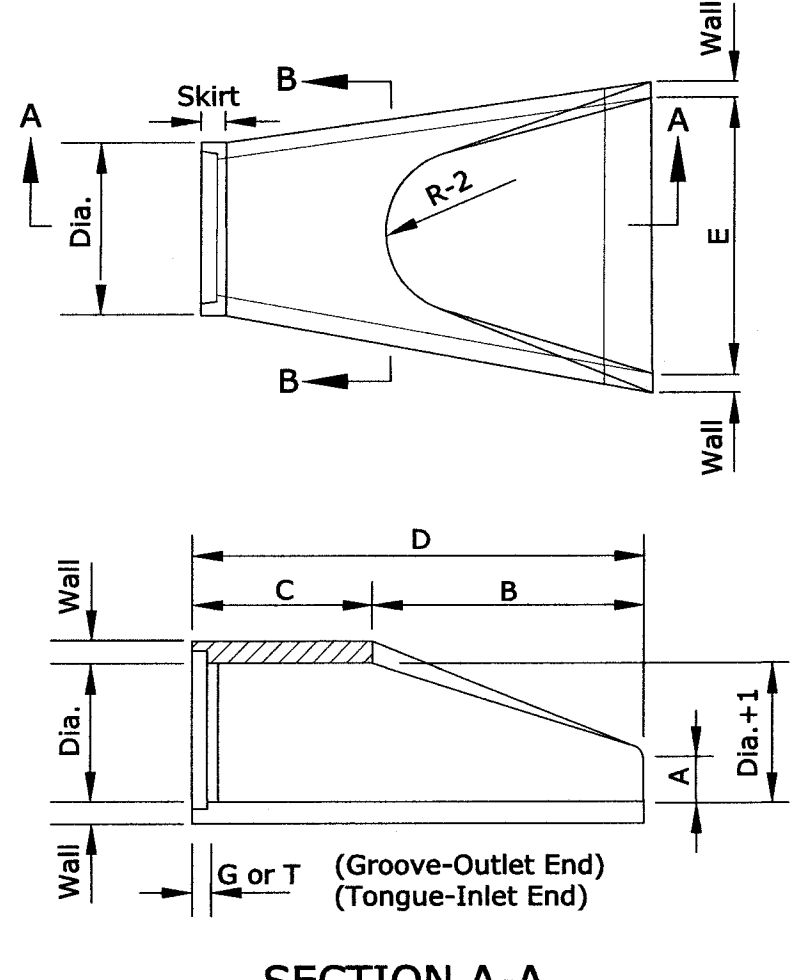


**TRENCH WIDTH TABLE**

PIPE Ø	MIN WIDTH
12"	2'-6"
15"	2'-9"
18"	3'-0"
24"	3'-6"
30"	4'-1 1/2"
36"	4'-9"
42"	5'-4 1/2"

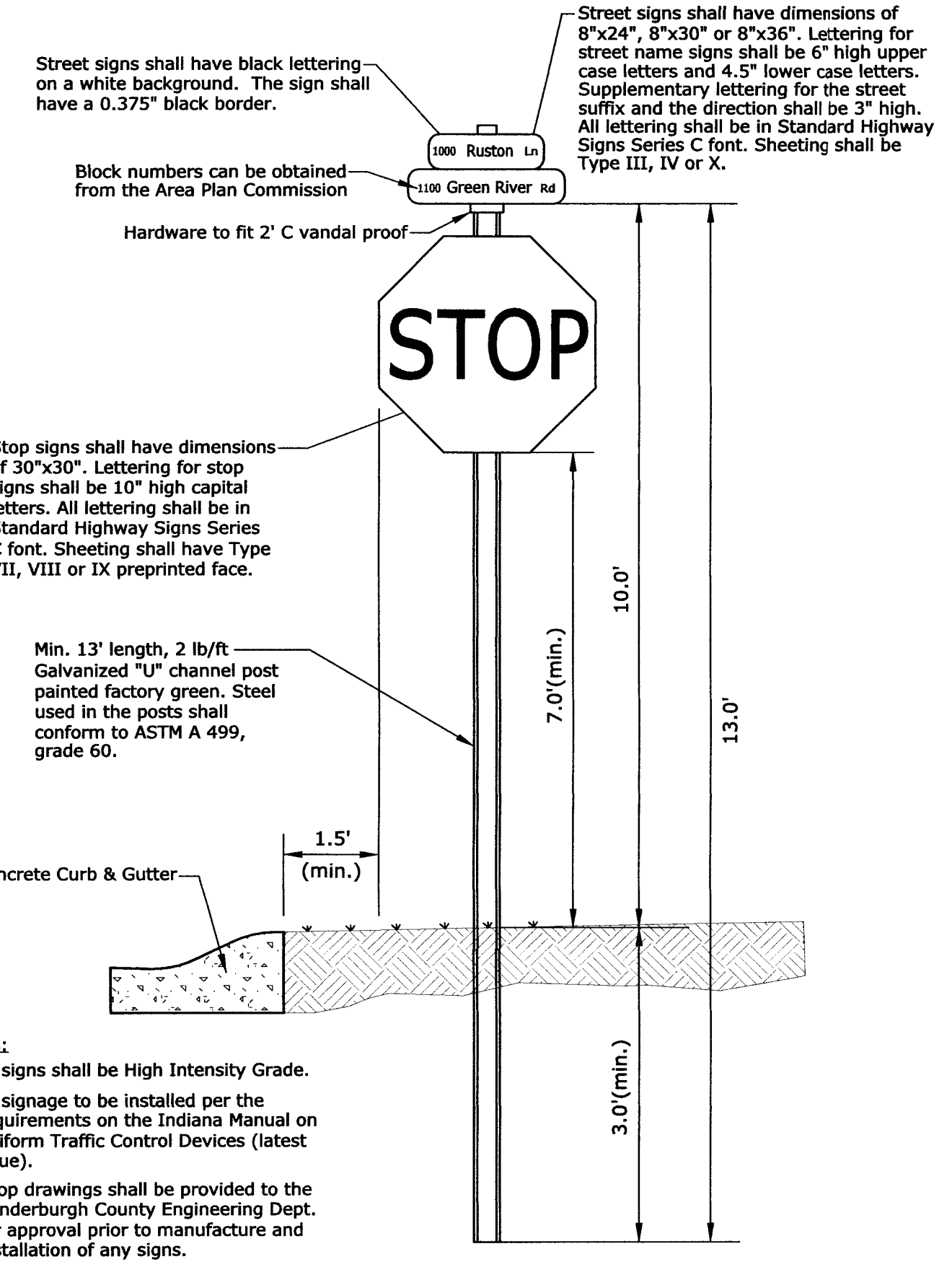
**REINFORCED CONCRETE PIPE BEDDING**  
Scale: N.T.S.



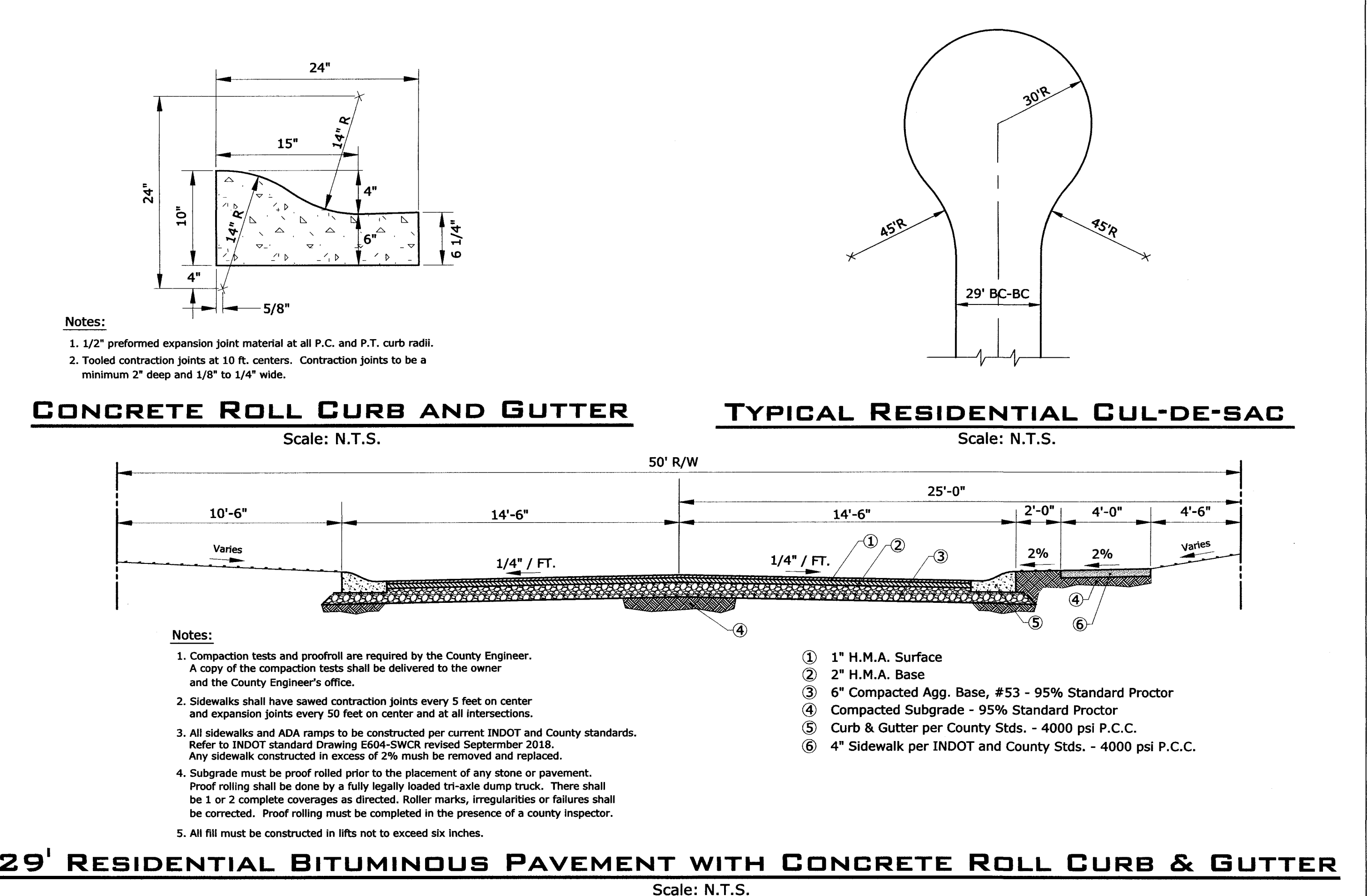
DIA.	WALL	G or T	WT. SEC.	A	B	C	D	E	DIA.+1	R-1	R-2	SKIRT
12	2	1 1/2	530	4	24	48 7/8	72 7/8	24	13	10 1/16	9	3 1/2
15	2 1/4	2	740	6	27	46	73	30	16	12 1/2	11	3 1/2
18	2 1/2	2 1/2	990	9	27	46	73	36	19	15 1/2	12	4
21	2 3/4	2 1/4	1280	9	35	38	73	42	22	16 1/8	13	4
24	3	2 1/2	1520	9 1/2	43 1/2	30	73 1/2	48	25	16 11/16	14	4 1/2
27	3 1/4	2 1/2	1930	10 1/2	48	25 1/2	73 1/2	54	28	17 3/4	14 1/2	4 1/2
30	3 1/2	3	2190	12	54	19 3/4	73 3/4	60	31	18 5/16	15	5
33	3 3/4	3 3/8	3150	13 1/2	58 1/2	39 1/4	97 3/4	66	34	23 3/4	17 1/2	5 1/2
36	4	3 1/2	4100	15	63	34 3/4	97 3/4	72	37	24 1/16	20	5 1/2
42	4 1/2	3 3/4	5380	21	63	35	98	78	43	27 1/4	22	5 1/2
48	5	4 1/4	6550	24	72	26	98	84	49	28 1/8	22	5 3/4
54	5 1/2	4 3/4	8040	27	65	35	100	90	55	32 7/8	24	6 1/4
60	6	5	8750	30	60	39	99	96	61	36 3/4	24	6 3/4
66	6 1/2	5 1/2	10630	24	78	21	99	102	67	35 11/16	24	7 1/4
72	7	6	12520	34	78	21	99	108	73	38 5/8	24	7 3/4
78	7 1/2	6 1/2	14430	24	78	21	99	114	79	41 15/16	24	8 1/2
84	8	7	16350	24	78	21	99	120	85	44 13/16	24	9

Note: Manufacture of end section is in accordance with applicable portions of A.S.T.M. specification C76.

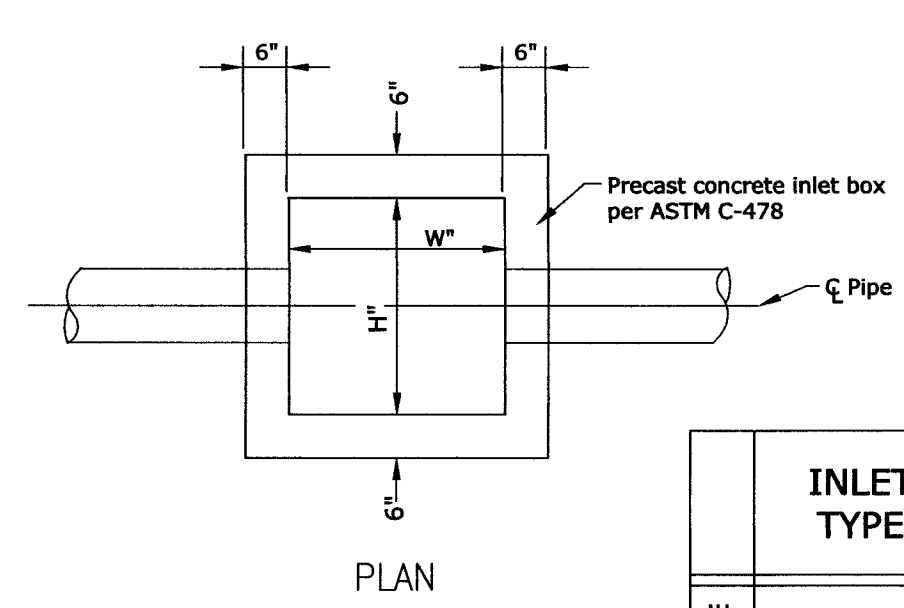
**PRECAST CONCRETE END SECTION**  
Scale: N.T.S.



**STREET SIGNS**  
Scale: N.T.S.

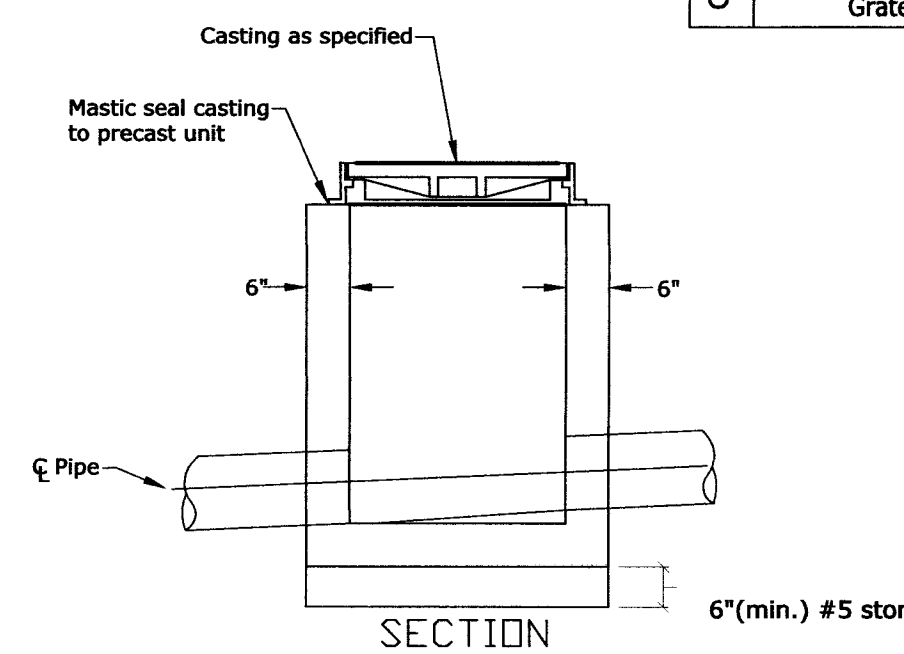


**CONCRETE ROLL CURB AND GUTTER** Scale: N.T.S.  
**TYPICAL RESIDENTIAL CUL-DE-SAC** Scale: N.T.S.  
**29' RESIDENTIAL BITUMINOUS PAVEMENT WITH CONCRETE ROLL CURB & GUTTER** Scale: N.T.S.

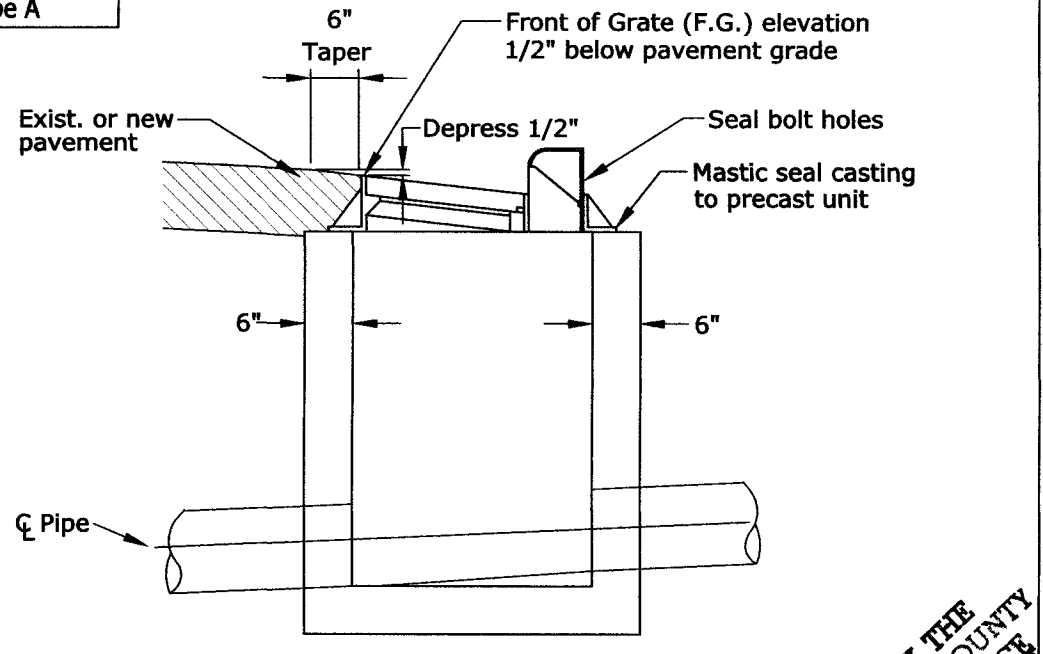
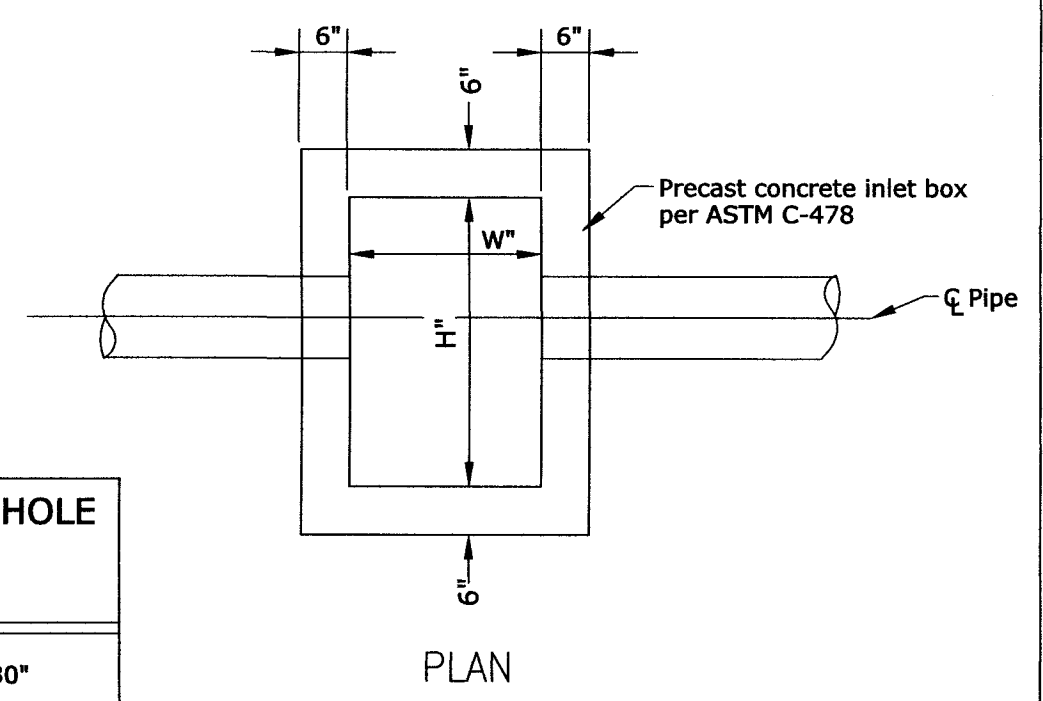


**INLET BOX TABLE**

	INLET TYPE	CURB INLET	DOUBLE CURB INLET	CURB INLET	AREA DRAIN	AREA DRAIN	MANHOLE
BOX SIZE	"W"	24"	24"	30"	30"	30"	30"
	"H"	36"	74"	46"	30"	46"	30"
CASTING	Paved Areas	EJW #7030	EJW #7030	EJW #7030			
	Grate	Type M2	Type M2	Type M2			
Non-Paved Areas					EJW #6610	EJW #6610	EJW #1022-1
	Grate						Type A



**AREA DRAIN/MANHOLE**



**INLET NOTES:**  
All precast units shall conform to ASTM C-478.  
Inlets shall be backfilled with granular material and compacted in 6\"/>

**PRECAST INLET BOX**  
Scale: N.T.S.

**APPROVED**  
OCT 30 2018

RECEIVED BY THE  
VANDERBURGH COUNTY  
SURVEYORS OFFICE  
10-24-18

This drawing and/or specifications is provided as an instrument of service provided by Cash Wagner & Associates, PC and is intended for use on this project only. All drawings, specifications, designs, models, ideas, calculations, and arrangements appearing herein constitute the original and unaltered work of and remain the property of Cash Wagner & Associates, PC. Any reproduction, use or disclosure of the proprietary information contained herein without the prior written consent of the Cash Wagner & Associates, PC is strictly prohibited.



*Glenn A. Meritt*  
SIGNATURE  
24 Oct 18  
DATE



414 CITADEL CIRCLE  
SUITE B  
EVANSVILLE, IN 47715  
PH: 812.401.5561  
FAX: 812.401.5563  
CELL: 812.774.2988  
E-MAIL: GMERITT@CASHWAGNER.COM

**REVISIONS**

NO.	DATE	BY	DESCRIPTION
1	10.24.18	G.A.M.	Added notes for sidewalk construction & removed curb turnout detail

PROJECT NO.: 18-3339  
DESIGNED BY: G.A.M.  
DRAWN BY: G.A.M.  
FILENAME: 3339 Road Storm Dets  
LAYOUT TAB:  
SCALE: As Shown

PROJECT: **MAGNOLIA RIDGE**  
ADDRESS: **NORTH GREEN RIVER ROAD**  
**EVANSVILLE, INDIANA**  
SHEET TITLE: **ROAD & STORM SEWER DETAILS**

DATE: **06.14.18**  
DRAWING NO.: **C-120**  
OF: