

# KEYSTONE SUBDIVISION SECTION VII

## ROADWAY PLANS

APPROVED BY:

Board of County Commissioners  
Vanderburgh County, Indiana

BY: \_\_\_\_\_ DATE: 9-18-00

## DRAINAGE PLANS

APPROVED BY:

The Vanderburgh County  
Drainage Board

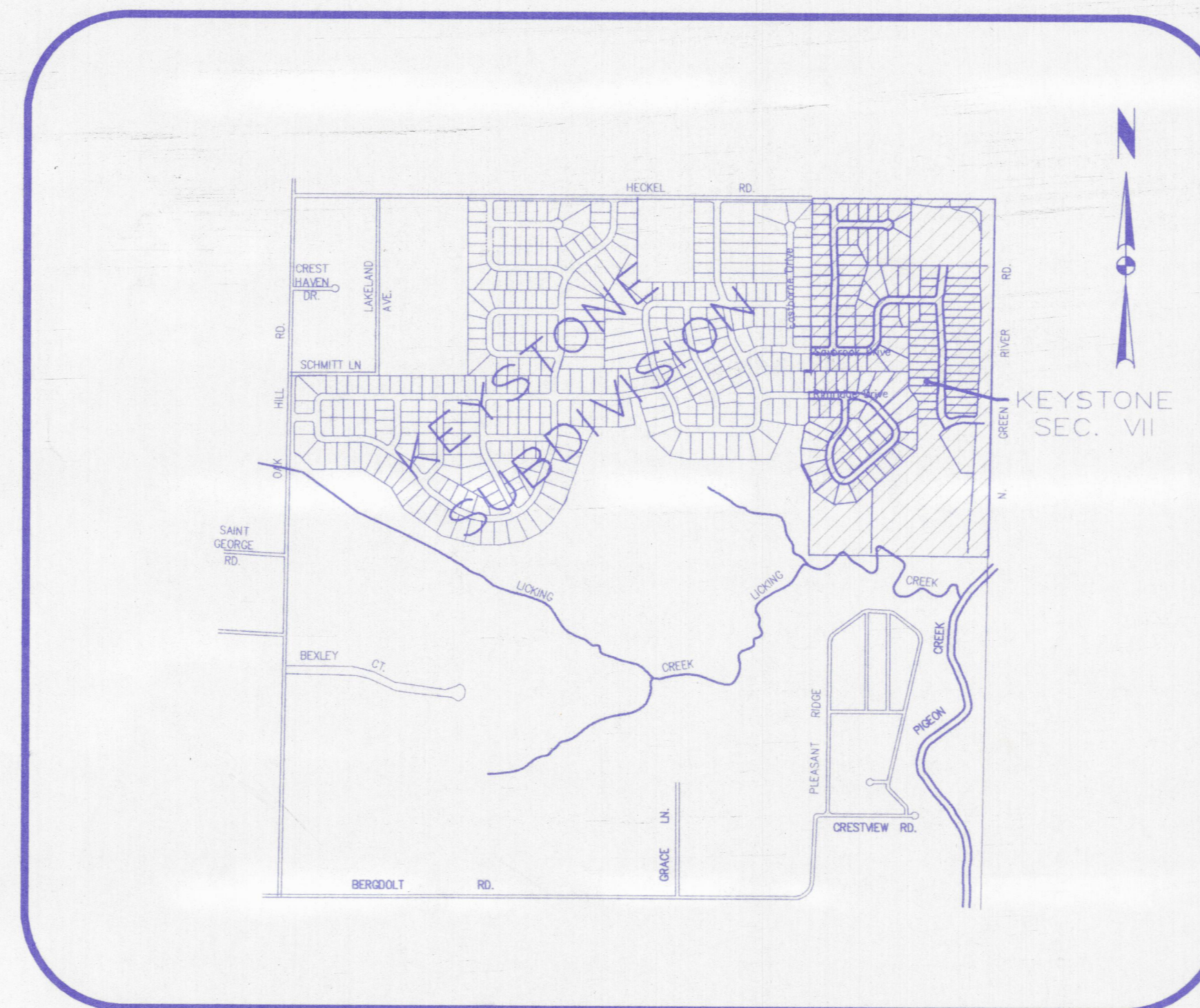
BY: \_\_\_\_\_ DATE: 4-24-00

## SANITARY SEWER PLANS

APPROVED BY:

Board of Evansville  
Water and Sewer Utility

DATE: \_\_\_\_\_



LOCATION MAP

Scale: 1"=1000'

## SHEET INDEX:

Sheet #	Description
C-1	Cover Sheet
C-2	Section VII Subdivision Plat
C-3	Utility and Drainage Plan
C-4	Delk Drive Plan and Profile
C-5	Langly Court Plan and Profile
C-6	Porterfield Drive Plan and Profile
C-7	High Tower Drive Plan and Profile
C-8	Saybrook Drive Plan and Profile
C-9	Rimridge Drive Plan and Profile; Sta. 8+88.71 - 21+00
C-10	Drakewick Drive Plan and Profile; Sta. 20+00 - 29+36.18
C-11	San. Sewer Line "A" Plan and Profile
C-12	Force Main Plan and Profile
C-13	Roadway Details
C-14	Storm Sewer/Drainage Details
C-15	Sanitary Sewer Details
C-16	Lift Station Details
C-17	Erosion Sediment Control Plan <i>Missing</i>
C-18	Intersection Details

## General Notes

Existing utilities are shown in their approximate locations on the drawings. The Contractor shall notify all utilities before beginning work for field locations. The utilities to be notified include the following:

Southern Indiana Gas and Electric Co.  
Evansville Water and Sewer Utility  
Ameritech Telephone Co.  
TCI Cable Television Co.

The following Governmental agencies shall be notified 24 hours prior to beginning work and on a daily basis thereafter when performing the work listed below:

Storm sewers, street subgrade, & streets  
Vanderburgh County Engineer

Sanitary sewers  
Evansville Water & Sewer Utility Operations Department

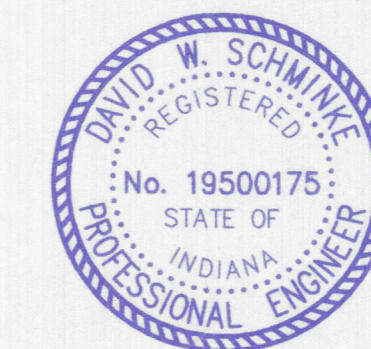
The contractor is cautioned that the location and/or elevation of existing utilities as shown on these plans is based on records of various utility companies, and where possible measurements taken in the field. The information is not to be relied on as being exact or complete. The contractor must contact the appropriate utility company at least 48 hours before any excavation to request exact field location of utilities.

Indiana Underground Utility Locate Service,  
Phone: 1-800-382-5544

## Morley and Associates, INC.

Consulting Engineers / Land Surveyors

600 S.E. Sixth Street  
Evansville, Indiana 47713  
(812) 464-9585



*David W. Schminke*

David W. Schminke  
Indiana Registration No. 19500175

August 1, 2000  
Date

ISSUED FOR CONSTRUCTION 9-19-00