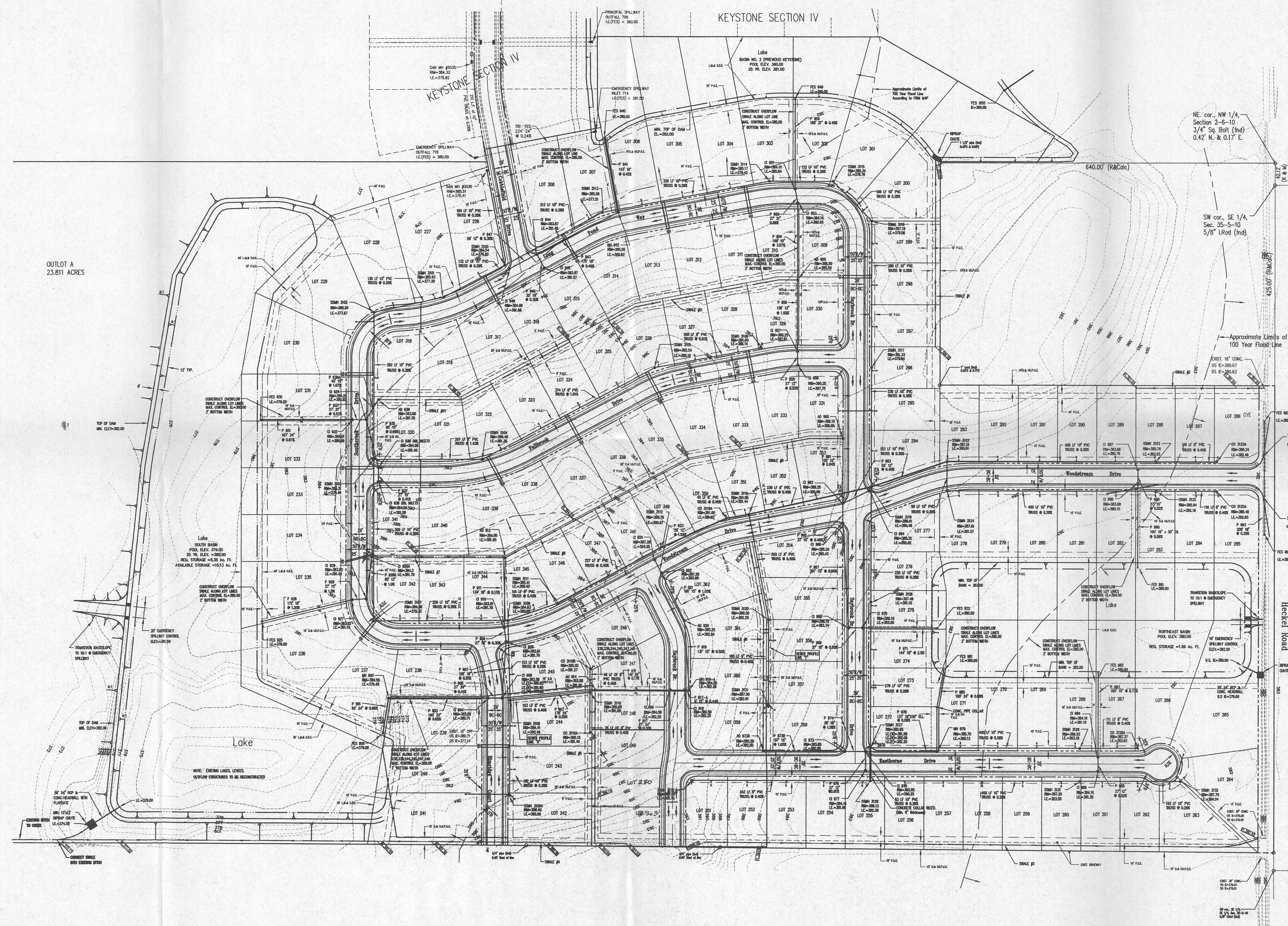


SW cor., NE 1/4,
Sec. 2-6-10
*4" mark in 4" x 8"
Stone (ind)



OUTLOT A
23.81 ACRES

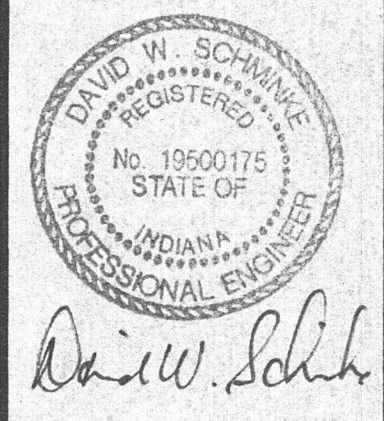
S 89°08'48" W 1302.88'

SW cor., NW 1/4,
Sec. 2-6-10
3/4" pipe (ind)

Morley and Associates, Inc.
Consulting Engineers/Surveyors/Architects
605 S.E. Martin Luther King Jr. Blvd.
Evansville, Indiana 47713
(812) 464-9585

All plans, designs, calculations, and arrangements indicated or represented by this drawing are owned by and the property of Morley and Associates, Inc. and were created for the use on and in connection with the specific project herein. No part of this drawing may be reproduced, stored in a retrieval system, or transmitted in any form, or by any means, electronic, mechanical, photocopying, recording, or otherwise, without the written permission of Morley and Associates, Inc. Written dimensions on these drawings shall have precedence over scale dimensions. Contractors shall verify and be responsible for all dimensions and conditions on the job and Morley and Associates, Inc. shall not be liable for any errors or omissions from the dimensions and conditions shown by these drawings.

| No. | By | Date | Description |
|-----|----|------|-------------|
| | | | |
| | | | |
| | | | |
| | | | |



Project: Keystone Subdivision Section VI
Sheet Title: Drainage Plan

Scale: 1"=100'
Designed By: DWS
Job Number: 3519-4(b)
Drawn By: CAH
Date: 09-24-98
Checked By: FNAME
Filename: SEC6.DWG
Sheet Number: 1