

LOT 3

LOT 4

LOT 5

LOT 21

LOT 20

1/4 Section Line

App. PL

App. PL

OUTLOT A

LOT 1

LOT 2

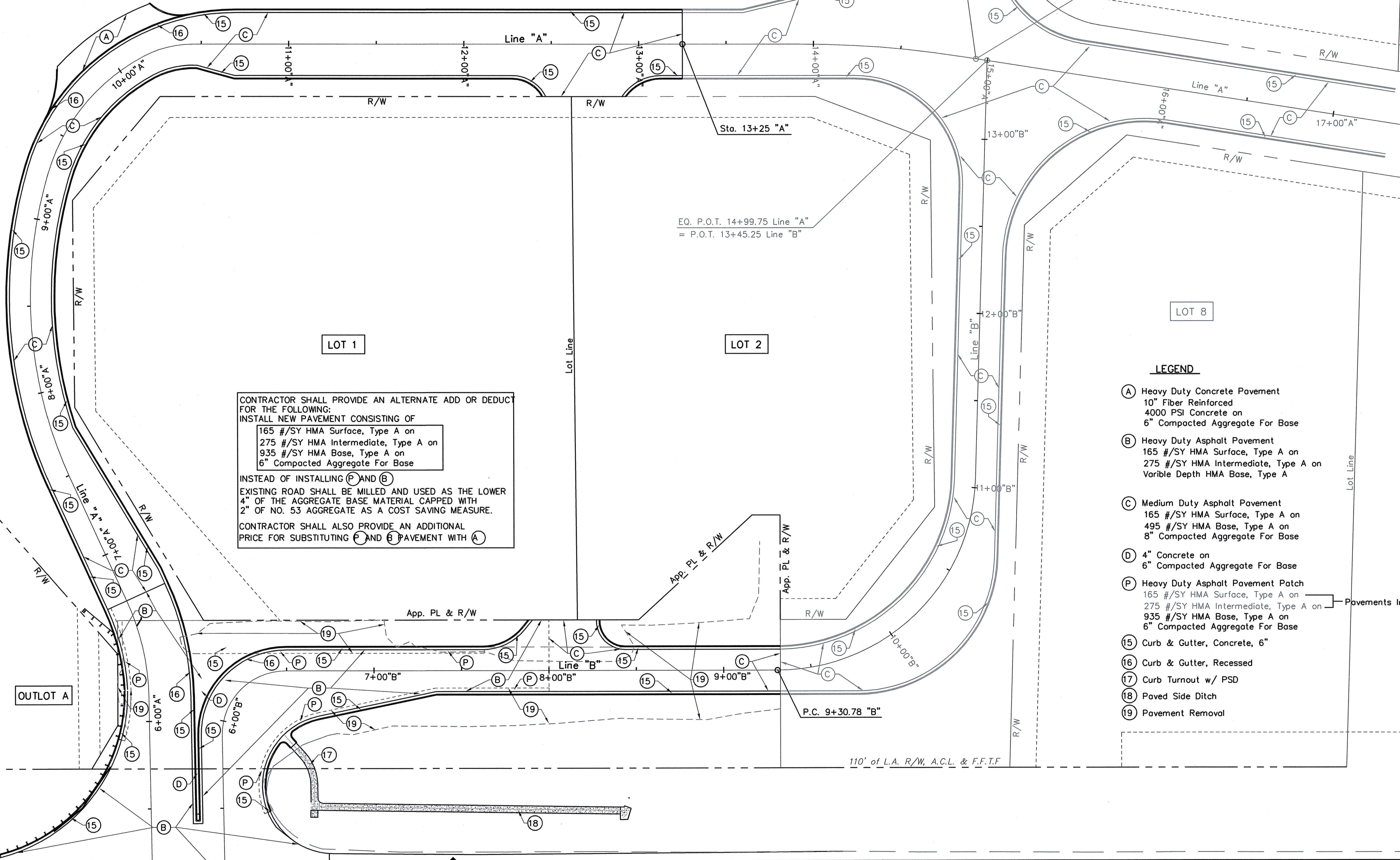
LOT 8

LOT 9

CONTRACTOR SHALL PROVIDE AN ALTERNATE ADD OR DEDUCT FOR THE FOLLOWING:
 INSTALL NEW PAVEMENT CONSISTING OF
 165 #/SY HMA Surface, Type A on
 275 #/SY HMA Intermediate, Type A on
 935 #/SY HMA Base, Type A on
 6" Compacted Aggregate For Base
 INSTEAD OF INSTALLING (P) AND (E)
 EXISTING ROAD SHALL BE MILLED AND USED AS THE LOWER 4" OF THE AGGREGATE BASE MATERIAL CAPPED WITH 2" OF NO. 53 AGGREGATE AS A COST SAVING MEASURE.
 CONTRACTOR SHALL ALSO PROVIDE AN ADDITIONAL PRICE FOR SUBSTITUTING (P) AND (E) PAVEMENT WITH (A)

- LEGEND**
- (A) Heavy Duty Concrete Pavement
10" Fiber Reinforced
4000 PSI Concrete on
6" Compacted Aggregate For Base
 - (B) Heavy Duty Asphalt Pavement
165 #/SY HMA Surface, Type A on
275 #/SY HMA Intermediate, Type A on
Variable Depth HMA Base, Type A
 - (C) Medium Duty Asphalt Pavement
165 #/SY HMA Surface, Type A on
495 #/SY HMA Base, Type A on
8" Compacted Aggregate For Base
 - (D) 4" Concrete on
6" Compacted Aggregate For Base
 - (E) Heavy Duty Asphalt Pavement Patch
165 #/SY HMA Surface, Type A on
275 #/SY HMA Intermediate, Type A on
935 #/SY HMA Base, Type A on
6" Compacted Aggregate For Base
 - (15) Curb & Gutter, Concrete, 6"
 - (16) Curb & Gutter, Recessed
 - (17) Curb Turnout w/ PSD
 - (18) Paved Side Ditch
 - (19) Pavement Removal
- Pavements Included in (E)

RUSHER CREEK

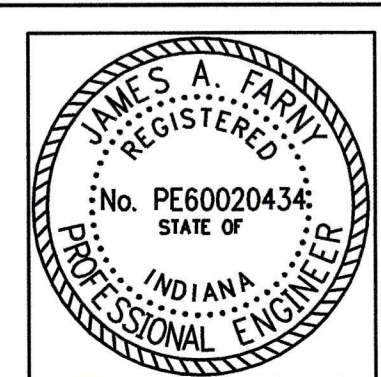


US 41 (Southbound)
(Asph)

P.O.T. 5+00.00 "A"

P.O.T. 5+00.00 "B"

(Asph)



RECOMMENDED FOR APPROVAL	<i>[Signature]</i>	10/11/11
	DESIGN ENGINEER	DATE
DESIGNED: JAF	DRAWN: BEW	
CHECKED: RAP	CHECKED: RAP	

BERNARDIN LOCHMUELLER & ASSOC., INC.
 6200 Vogel Road / Evansville, Indiana 47715
 (812)479-6200 / fax: (812)479-6282

INTERSTATE CROSSING SUBDIVISION
 EVANSVILLE, INDIANA

PAVEMENT PLAN

HORIZ. SCALE 1"=30'	PROJECT --
VERT. SCALE N/A	DATE: 08/16/11
DRAWN BY B.E.W.	ISSUED:
DESIGNED BY J.A.F.	SHEET 7
BLA PROJ. NO. 110-0097-OPD	

S:\Projects\110-0097\Design\Misc_Dwg\pavplan.dwg 10/11/11 11:24 Road Coord Syf