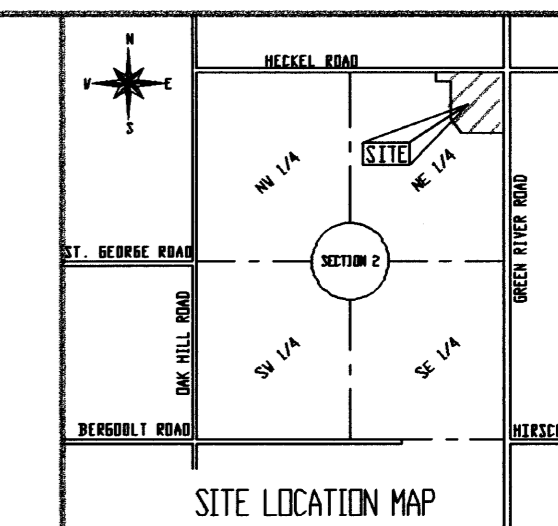
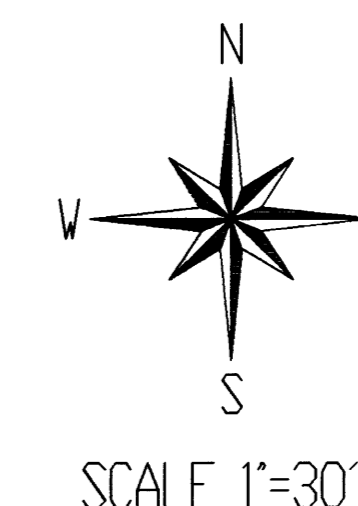


# HERITAGE CONDOMINIUMS AT KEYSTONE GRADING & STORM SEWER PLAN

NE COR  
NE 1/4  
SEC. 2-6-10

Heckel Road

NE COR  
NE 1/4  
SEC. 2-6-10  
FND  
1' IRON PIN



- LEGEND**
- = LIGHT POLE
  - = EXISTING CONTOURS
  - = PAVEMENT
  - = LOT LINE
  - = CENTER LINE ROAD
  - = EASEMENT
  - = STORM SEWER
  - = DUMPSTER (6'x6.5'x6.5' typical)
  - = DRAINAGE DIRECTION
  - = PROPOSED FINISHED GRADE

B.F.E. 384.50

ALL UNITS TO HAVE A FIRST FLOOR  
MINIMUM ELEV. OF 386.50  
UNLESS OTHERWISE NOTED

AREA OF BUILDINGS = 66,295 S.F.  
AREA OF PARKING = 71,290 S.F.  
TOTAL HARD SURFACE = 137,585 S.F.

NOTE: ALL STORM SEWER PIPES  
REQUIRE END SECTIONS

KEYSTONE SUBDIVISION SECTION VIIA  
2001R0007407

LOT 384

LOT 385

LOT 408

LOT 479

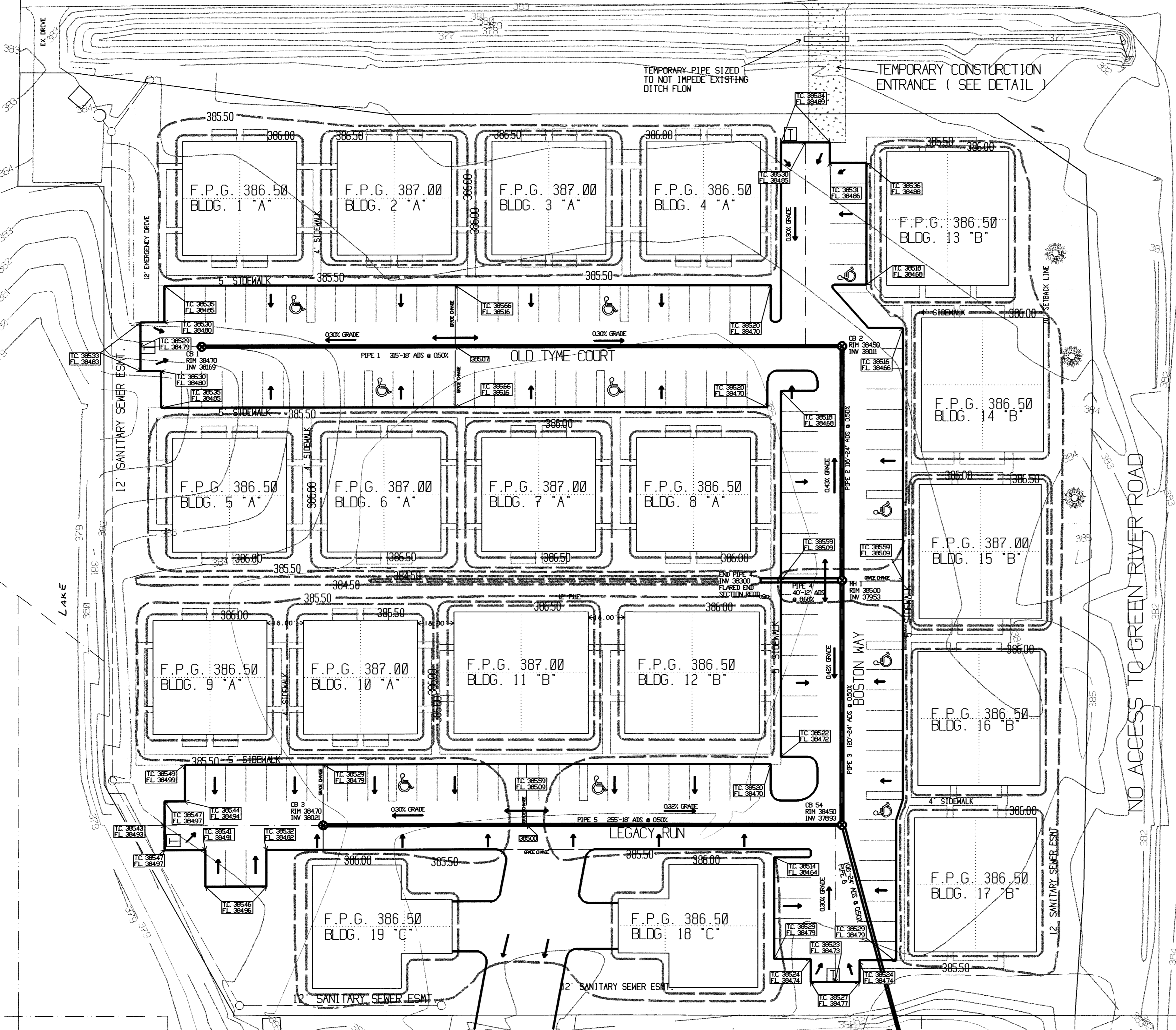
LOT 482

LOT 484

KEYSTONE SUBDIVISION SECTION VIIC  
2001R00045425

GREEN RIVER ROAD

NO ACCESS TO GREEN RIVER ROAD



UTILITIES CONSULTING CO., INC.  
106 STATE STREET  
NEWBURGH, IN 47630

HERITAGE CONDOMINIUMS AT KEYSTONE  
GRADING & STORM SEWER PLAN  
EVANSVILLE, INDIANA

JOB: 0-3-11 SCALE: 1"=30'  
DATE: 9-27-2004 SHEET: 4A of 30

**FIND**