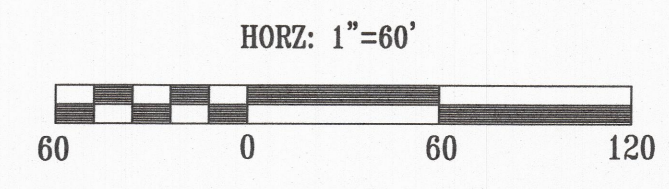


Owner/Developer Information:
 CWK Investments - United, LLC.
 Wayne Kinney
 9210 Petersburg Road
 Evansville, IN 47725
 Phone: 812-449-8731

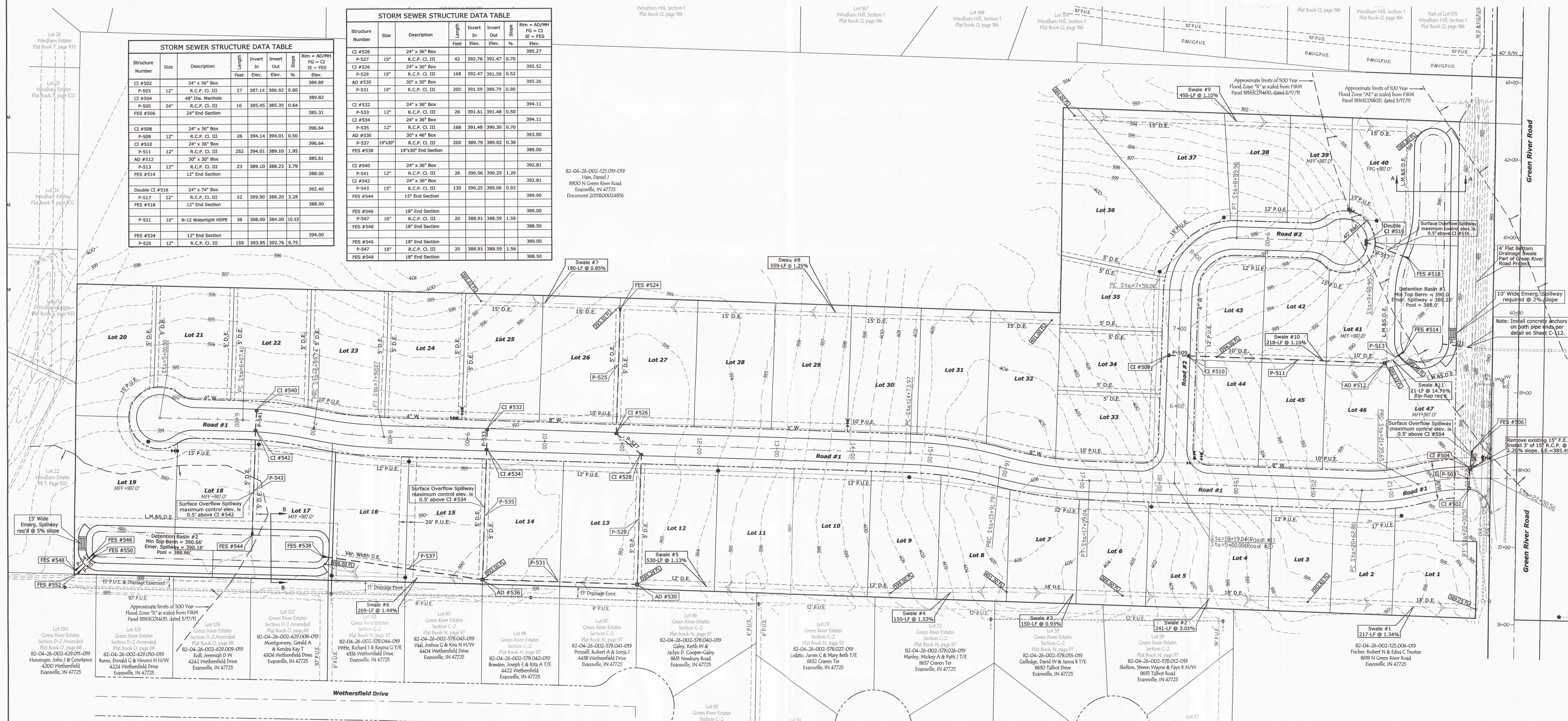


STORM SEWER STRUCTURE DATA TABLE

Structure Number	Size	Description	Length Feet	Invert In Elev.	Invert Out Elev.	Slope %	Rim = AD/MH FG = CI IE = FES Elev.
CI #502	24" x 36" Box						389.89
P-503	12" R.C.P. CI, III		27	387.14	386.92	0.80	389.82
CI #504	48" Dia. Manhole						389.82
P-505	24" R.C.P. CI, III		16	385.45	385.35	0.64	385.31
FES #506	24" End Section						385.31
CI #508	24" x 36" Box						396.64
P-509	12" R.C.P. CI, III		26	394.14	394.01	0.50	396.64
CI #510	24" x 36" Box						396.64
P-511	12" R.C.P. CI, III		252	394.01	389.10	1.95	385.61
AD #512	30" x 30" Box						385.61
P-513	12" R.C.P. CI, III		23	389.10	388.23	3.79	388.00
FES #514	12" End Section						388.00
Double CI #516	24" x 74" Box						392.40
P-517	12" R.C.P. CI, III		52	389.90	388.20	3.28	388.00
FES #518	12" End Section						388.00
P-521	10" N-12 Watertight HDPE		38	388.00	384.00	10.53	394.00
FES #524	12" End Section						394.00
P-525	12" R.C.P. CI, III		159	393.95	392.76	0.75	395.27

STORM SEWER STRUCTURE DATA TABLE

Structure Number	Size	Description	Length Feet	Invert In Elev.	Invert Out Elev.	Slope %	Rim = AD/MH FG = CI IE = FES Elev.
CI #526	24" x 36" Box						395.27
P-527	15" R.C.P. CI, III		42	392.76	392.47	0.70	395.27
CI #528	24" x 36" Box						395.27
P-529	18" R.C.P. CI, III		168	392.47	391.59	0.52	395.26
AD #530	30" x 30" Box						395.26
P-531	18" R.C.P. CI, III		200	391.59	389.79	0.90	394.11
CI #532	24" x 36" Box						394.11
P-533	12" R.C.P. CI, III		26	391.61	391.48	0.50	394.11
CI #534	24" x 36" Box						394.11
P-535	12" R.C.P. CI, III		168	391.48	390.30	0.70	393.00
AD #536	30" x 46" Box						393.00
P-537	19"x30" R.C.P. CI, III		200	389.79	389.02	0.38	389.00
FES #538	19"x30" End Section						389.00
CI #540	24" x 36" Box						392.81
P-541	12" R.C.P. CI, III		26	390.56	390.25	1.20	392.81
CI #542	24" x 36" Box						392.81
P-543	15" R.C.P. CI, III		130	390.25	389.06	0.92	389.00
FES #544	15" End Section						389.00
FES #546	18" End Section						389.00
P-547	18" R.C.P. CI, III		20	388.91	388.59	1.56	388.50
FES #548	18" End Section						388.50
FES #546	18" End Section						389.00
P-547	18" R.C.P. CI, III		20	388.91	388.59	1.56	389.00
FES #548	18" End Section						388.50



This drawing and/or specifications is provided as an instrument of service provided by Cash Wagner & Associates, PC and is intended for use on this project only. All drawings, specifications, designs, models, ideas, calculations, and arrangements appearing herein constitute the original and unpublished work of and remain the property of Cash Wagner & Associates, PC. Any reproduction, use or disclosure of the proprietary information contained herein without the prior written consent of the Cash Wagner & Associates, PC is strictly prohibited.

Written dimensions shown hereon shall take precedence over scaled dimensions. Contractors shall calculate and measure required dimensions. Notify Cash Wagner & Associates, PC with any variations in dimensions or conditions from those indicated on these drawings. This drawing was based on available information. Commencement of work constitutes verification and acceptance of existing conditions.

Application of a material or equipment to work installed by others constitutes acceptance of the work and assumption of responsibility for satisfactory installation.



G. Merritt
 SIGNATURE
 DATE: 22 Oct 14

CASH WAGNER & ASSOCIATES, PC
 CONSULTING ENGINEERS & LAND SURVEYORS
 WWW.CASHWAGNER.COM

414 CITADEL CIRCLE
 SUITE B
 EVANSVILLE, IN 47715
 PH: 812.401.5561
 FAX: 812.401.5563

NO.	DATE	BY	DESCRIPTION
	mm.dd.yy	INI	Description

PROJECT NO.: 14-1838
 DESIGNED BY: G.A.M.
 DRAWN BY: G.A.M.
 FILENAME: 1838.dwg
 LAYOUT TAB: Drainage
 SCALE: 1" = 60'

PROJECT: GREEN RIVER MEADOWS
 ADDRESS: GREEN RIVER ROAD
 EVANSVILLE, IN
 SHEET TITLE: DRAINAGE PLAN

DATE: 10.22.14
 DRAWING NO.: C-101

RECEIVED BY THE VANDERBURGH COUNTY SURVEYOR'S OFFICE
 5-16-2021 8:00 AM AR