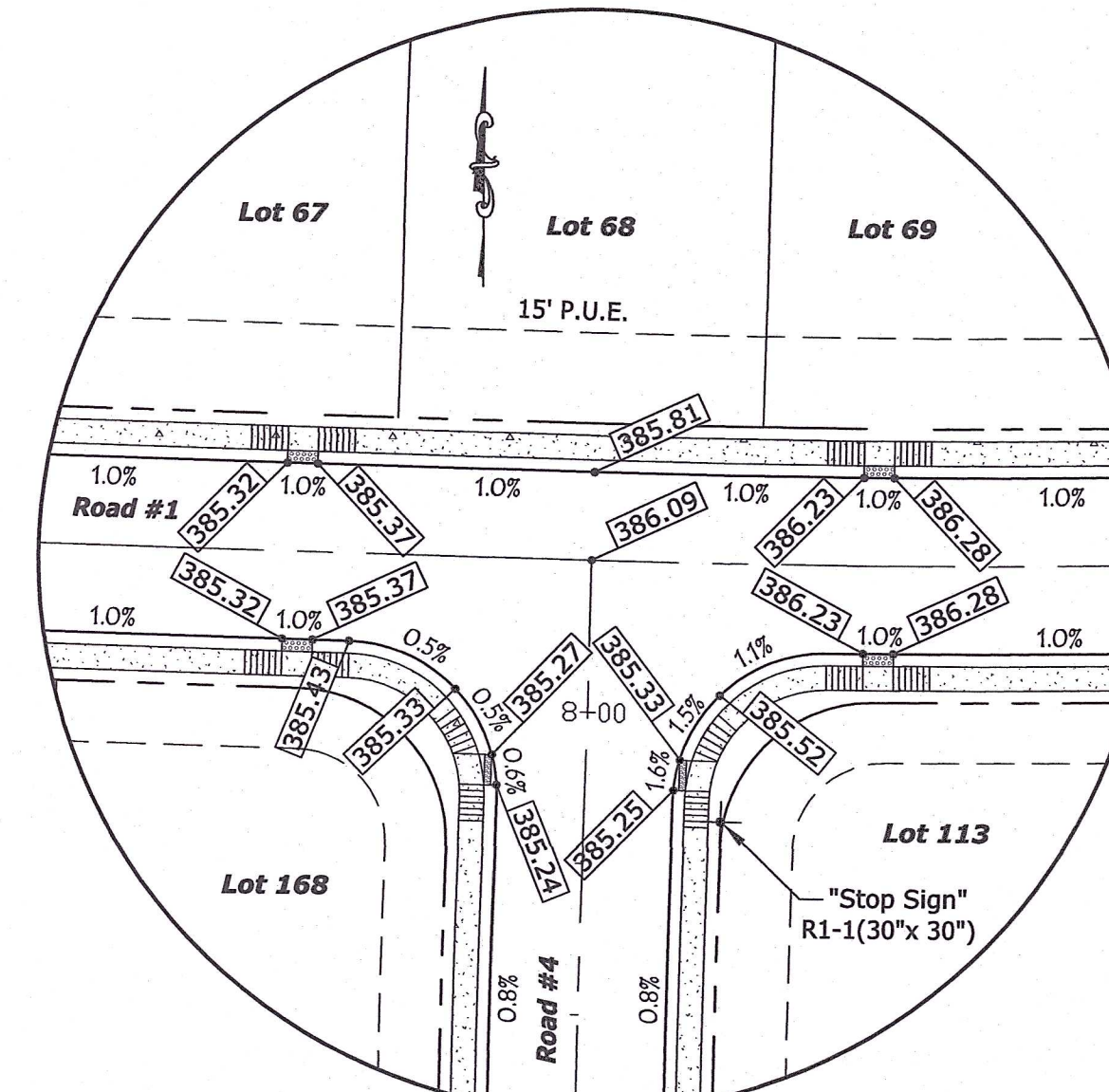


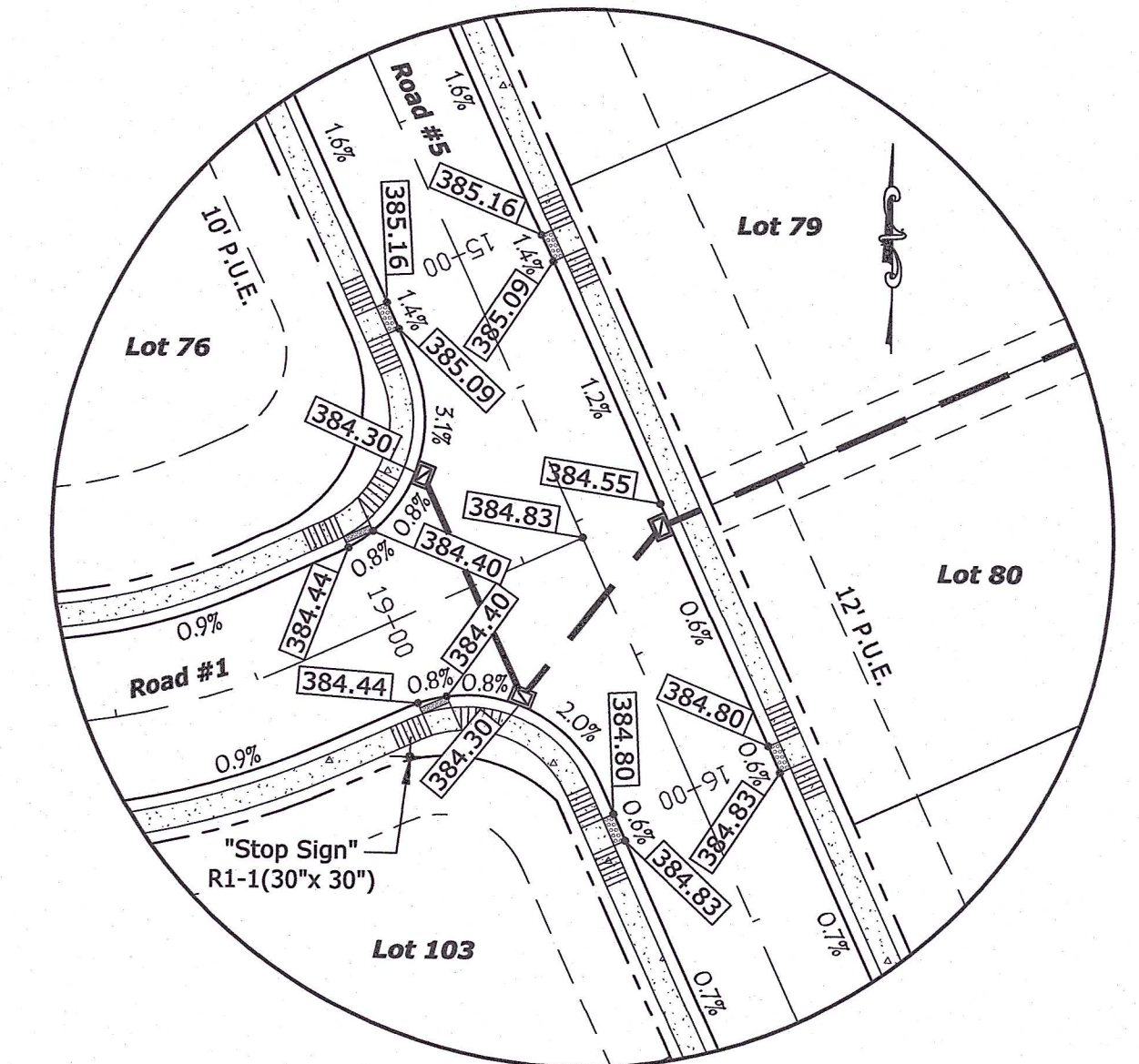
Note: All elevations along curb line are gutter elevations.
Raise 0.33' for top of curb elevation.

ROAD #1 - ROAD #3
SCALE: 1" = 30'



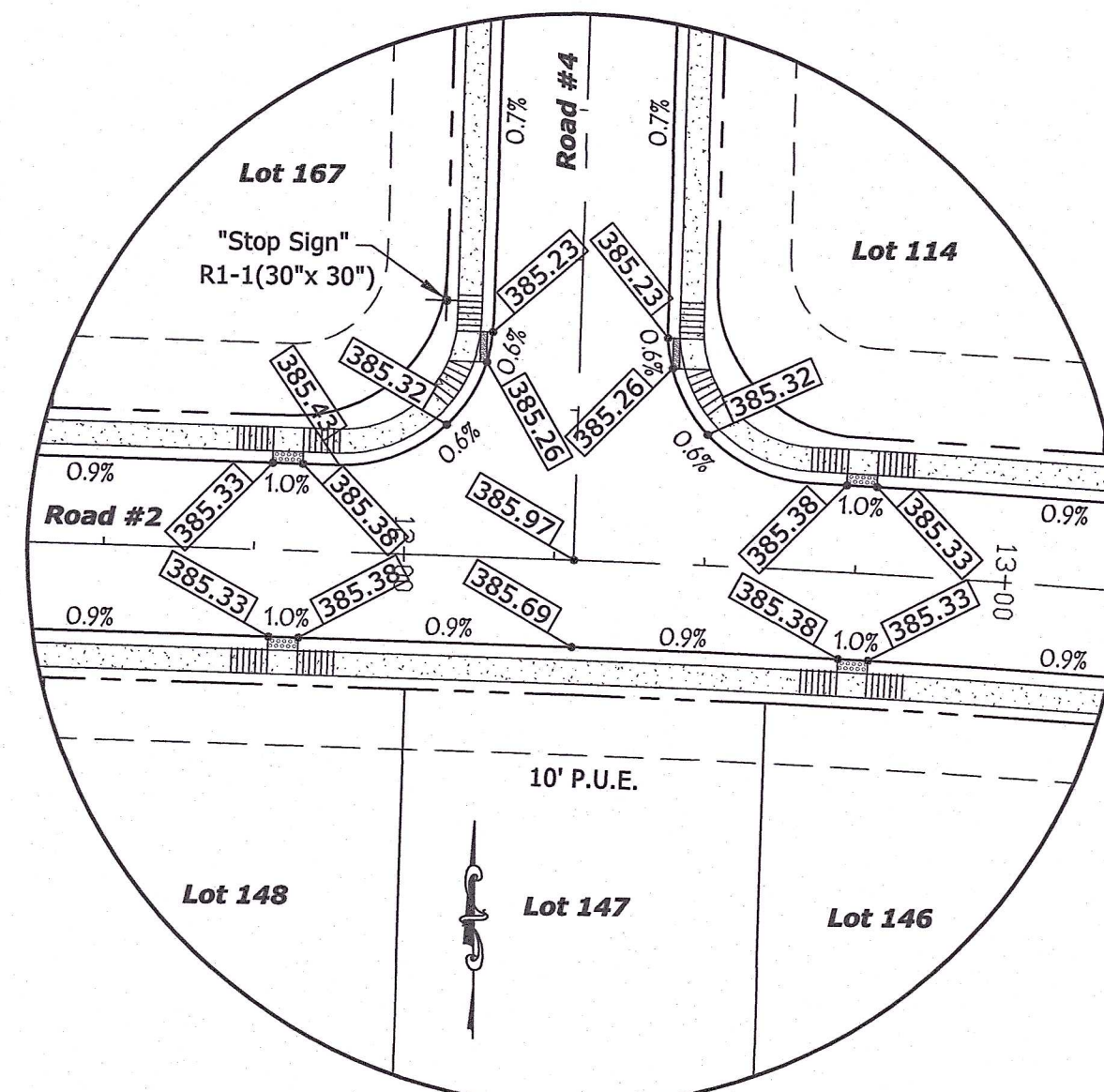
Note: All elevations along curb line are gutter elevations.
Raise 0.33' for top of curb elevation.

ROAD #1 - ROAD #4
SCALE: 1" = 30'



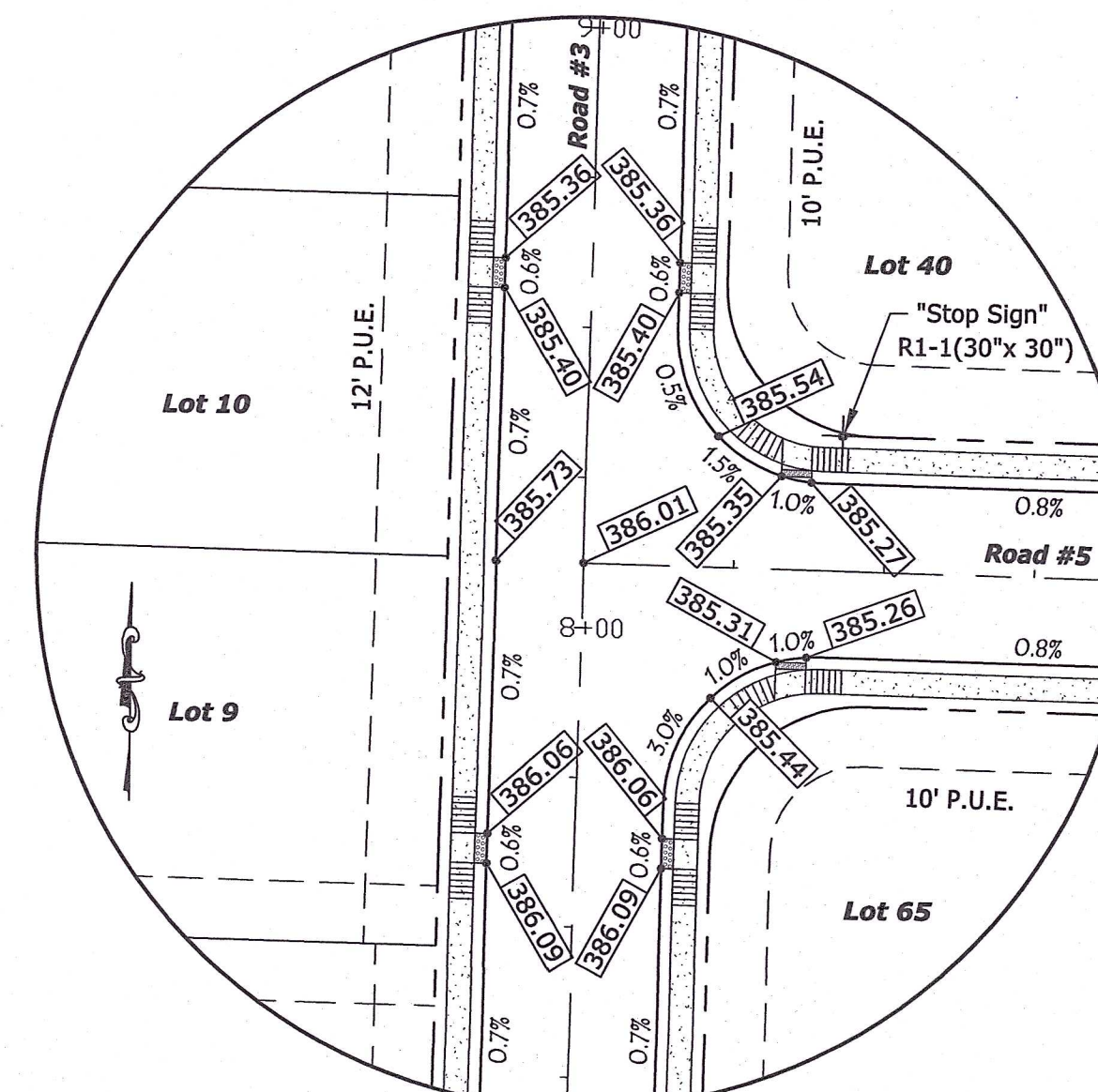
Note: All elevations along curb line are gutter elevations.
Raise 0.33' for top of curb elevation.

ROAD #1 - ROAD #5
SCALE: 1" = 30'



Note: All elevations along curb line are gutter elevations.
Raise 0.33' for top of curb elevation.

ROAD #2 - ROAD #4
SCALE: 1" = 30'



Note: All elevations along curb line are gutter elevations.
Raise 0.33' for top of curb elevation.

ROAD #3 - ROAD #5
SCALE: 1" = 30'

This drawing and/or specifications is provided as an instrument of service provided by Cash Waggoner & Associates, PC and is intended for use on this project only. All drawings, specifications, designs, models, ideas, calculations, and management representing herein constitutes the original and unpublished work of and remains the property of Cash Waggoner & Associates, PC. Any reproduction, use or disclosure of the proprietary information contained herein without the prior written consent of the Cash Waggoner & Associates, PC is strictly prohibited.

Written dimensions shown hereon shall take precedence over scaled dimensions. Contractors shall calculate and measure required dimensions. Handy Cash Waggoner & Associates, PC with any variations in dimensions or conditions from those indicated on these drawings. This drawing was based on available information. Commencement of Work constitutes verification and acceptance of existing conditions.

Application of a material or equipment to Work installed by others constitutes acceptance of that Work and assumption of responsibility for satisfactory installation.



G. Meritt
SIGNATURE
28 July 22
DATE



414 CITADEL CIRCLE
SUITE B
EVANSVILLE, IN 47715
PH: 812.401.5561
FAX: 812.401.5563
CELL: 812.774.2988
E-MAIL: G.MERITT@CASHWAGGNER.COM

NO.	DATE	BY	DESCRIPTION

PROJECT NO.: 21-5012
DESIGNED BY: G.A.M.
DRAWN BY: A.W.W.
FILENAME: 5012 BASE
LAYOUT TAB: SIDEWALK DETAILS
SCALE: As Shown

PROJECT: GOLDFINCH COVE
ADDRESS: GREEN RIVER ROAD
EVANSVILLE, INDIANA
SHEET TITLE: SIDEWALK RAMP DETAILS

DATE: 07.28.22
DRAWING NO.: C-127
OF:

RECEIVED
AUG 22 2022
Vanderburgh County Engineering