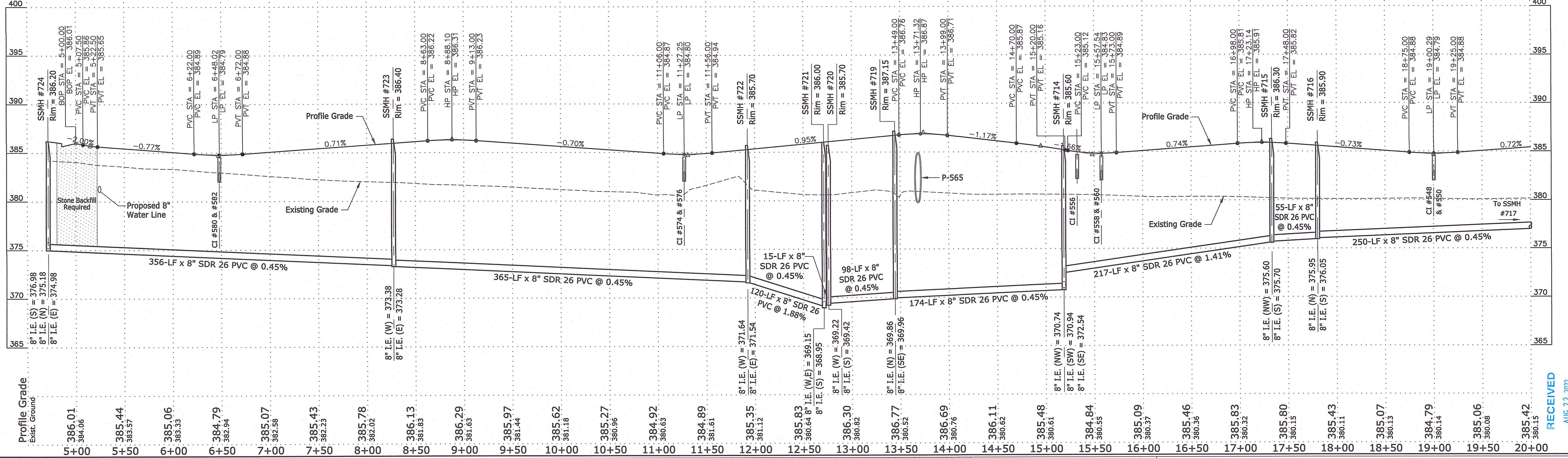




1" = 50' Horiz.
1" = 5' Vert.

PVI STA = 5+15.00 PVI EL = 385.71 CURVE LEN = 15.00	PVI STA = 6+47.00 PVI EL = 384.70 CURVE LEN = 50.00	PVI STA = 8+88.00 PVI EL = 386.40 CURVE LEN = 50.00	PVI STA = 11+31.00 PVI EL = 384.70 CURVE LEN = 50.00	PVI STA = 13+74.00 PVI EL = 387.00 CURVE LEN = 50.00	PVI STA = 14+95.00 PVI EL = 385.58 CURVE LEN = 50.00	PVI STA = 15+48.00 PVI EL = 384.70 CURVE LEN = 50.00	PVI STA = 17+23.00 PVI EL = 386.00 CURVE LEN = 50.00	PVI STA = 19+00.00 PVI EL = 384.70 CURVE LEN = 50.00
---	---	---	--	--	--	--	--	--



This drawing and/or specifications is provided as an instrument of service provided by Cash Wagner & Associates, PC and is intended for use on this project only. All drawings, specifications, designs, models, ideas, calculations, and arrangements appearing herein constitute the original and unpublished work of and remain the property of Cash Wagner & Associates, PC. Any reproduction, use or disclosure of the proprietary information contained herein without the prior written consent of the Cash Wagner & Associates, PC is strictly prohibited.

Written dimensions shown hereon shall take precedence over scaled dimensions. Contractors shall calculate and measure required dimensions. Notify Cash Wagner & Associates, PC with any variations in dimensions or conditions from those indicated on these drawings. This drawing was based on available information. Commencement of Work constitutes verification and acceptance of information.

Application of a material or equipment to Work installed by others constitutes acceptance of that Work and assumption of responsibility for satisfactory installation.

CASH WAGGNER & ASSOCIATES, PC
CONSULTING ENGINEERS | SURVEYORS

414 CITADEL CIRCLE
SUITE B
EVANSVILLE, IN 47715
PH: 812.401.5561
FAX: 812.401.5563
CELL: 812.774.2988
E-MAIL: GMERITT@CASHWAGGNER.COM

PROJECT NO.: 20-5012
DESIGNED BY: G.A.M.
DRAWN BY: A.W.W.
FILENAME: 5012 BASE
LAYOUT TAB: ROAD 5
SCALE: As Shown

DATE: 07.18.22
DRAWING NO.: C-112

28 July 22
DATE

CASH WAGGNER & ASSOCIATES, PC
CONSULTING ENGINEERS | SURVEYORS

414 CITADEL CIRCLE
SUITE B
EVANSVILLE, IN 47715
PH: 812.401.5561
FAX: 812.401.5563
CELL: 812.774.2988
E-MAIL: GMERITT@CASHWAGGNER.COM

PROJECT NO.: 20-5012
DESIGNED BY: G.A.M.
DRAWN BY: A.W.W.
FILENAME: 5012 BASE
LAYOUT TAB: ROAD 5
SCALE: As Shown

DATE: 07.18.22
DRAWING NO.: C-112