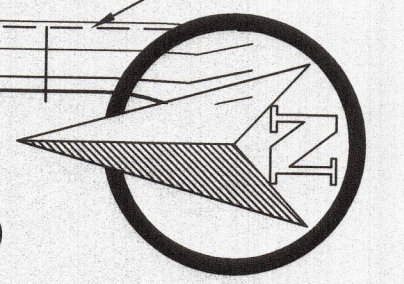
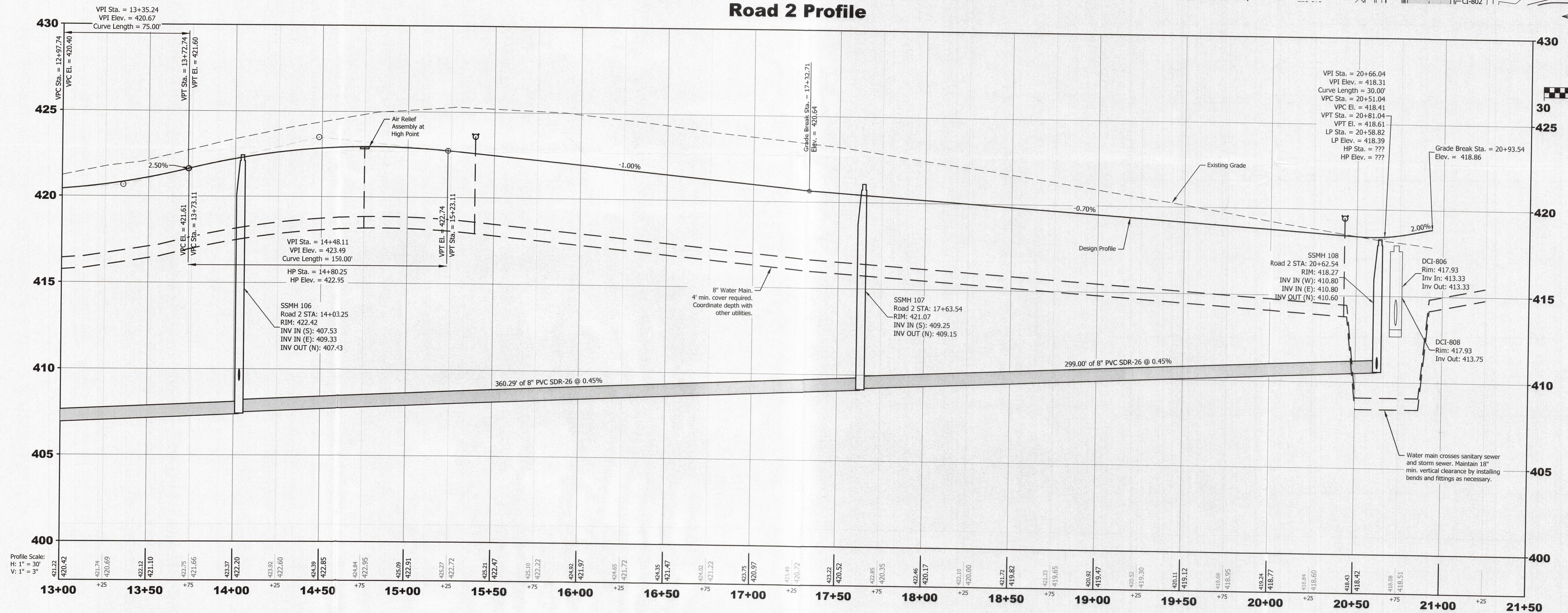


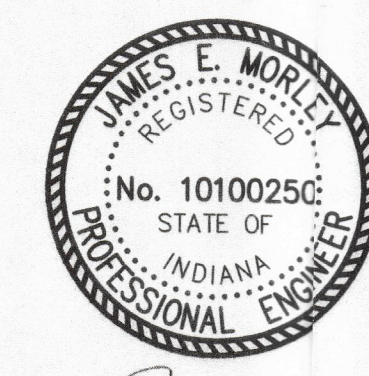
Road 2 Profile



SCALE 1" = 30'

Profile Scale:
H: 1" = 30'
V: 1" = 3'

Note:
All pipe and structures within 5' of pavement to be granular backfill. Refer to detail sheets.



Revisions		
No.	By	Date

All ideas, designs, calculations, and arrangements indicated or represented by this drawing are owned by and are the property of Morley and Associates, Inc. and were created as instruments of service for use on and in connection with the specified project. Morley and Associates retains all common law, statutory law and other rights including copyrights. No drawings or electronic files shall be reused for any other person or firm without the written prior consent of Morley and Associates, Inc.

Written dimensions on these drawings shall have precedence over scale dimensions. Contractors shall verify and be responsible for all dimensions and conditions on the job and Morley and Associates, Inc. must be notified of any variations from the dimensions and conditions shown by these drawings.

If differences exist between electronic files and the signed and sealed hard copy drawings, the hard copy shall govern.

4800 Rosebud Ln., Newburgh, IN 47630 812 464 6995 Phone 812 464 2514 Fax morleycorp.com



Project: Eleanor's Place
Sheet Title: Plan and Profile
Road 2 (STA 14+50 to END)
Vanderburgh County, IN

Scale: 1" = 30'
Designed By: JEM Job Number: 11822.4.001-B
Drawn By: CRS Date: 4.26.2022
Filename: 11822 Civil Base
Sheet Number: C108

Received by the Vanderburgh County Surveyor's Office
APR 26 2022
Time 10:00 AM Initials AR