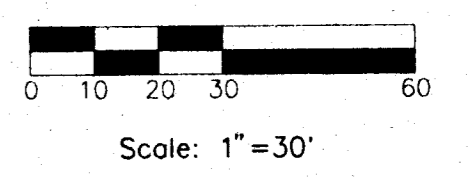


11/20/94  
11/20/94



LOT No. 1

LOT No. 2

**NOTE:**  
Any & all permits issued for the use of the property shown hereon shall be subject to the conditions imposed by the Board of Commissioners Of Vanderburgh County in regards to Zoning Ordinance VC-8-94, dated Aug. 22 1994.

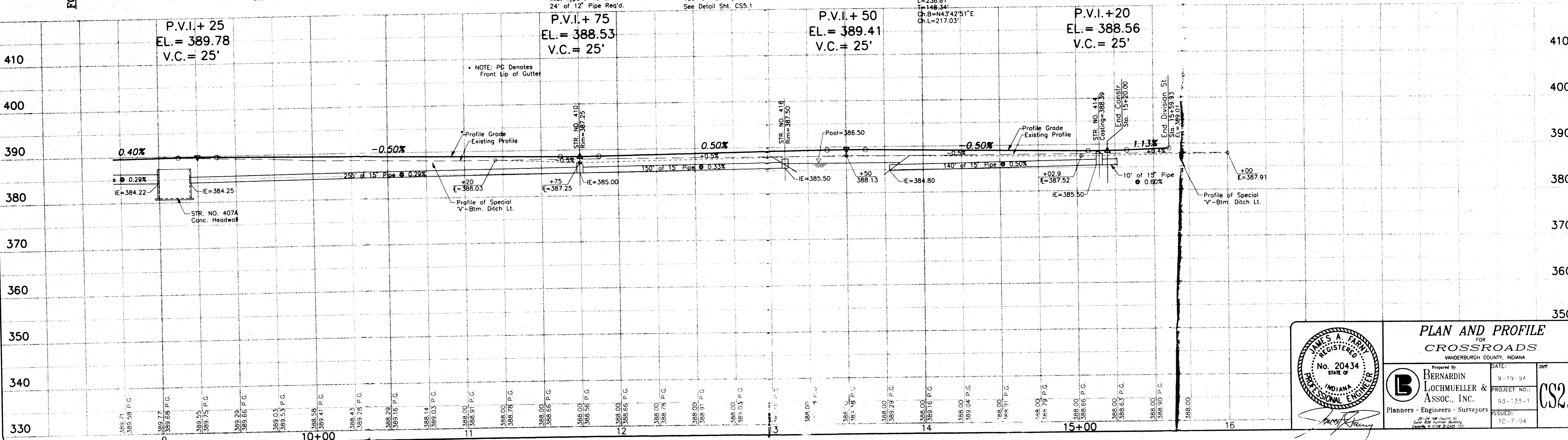
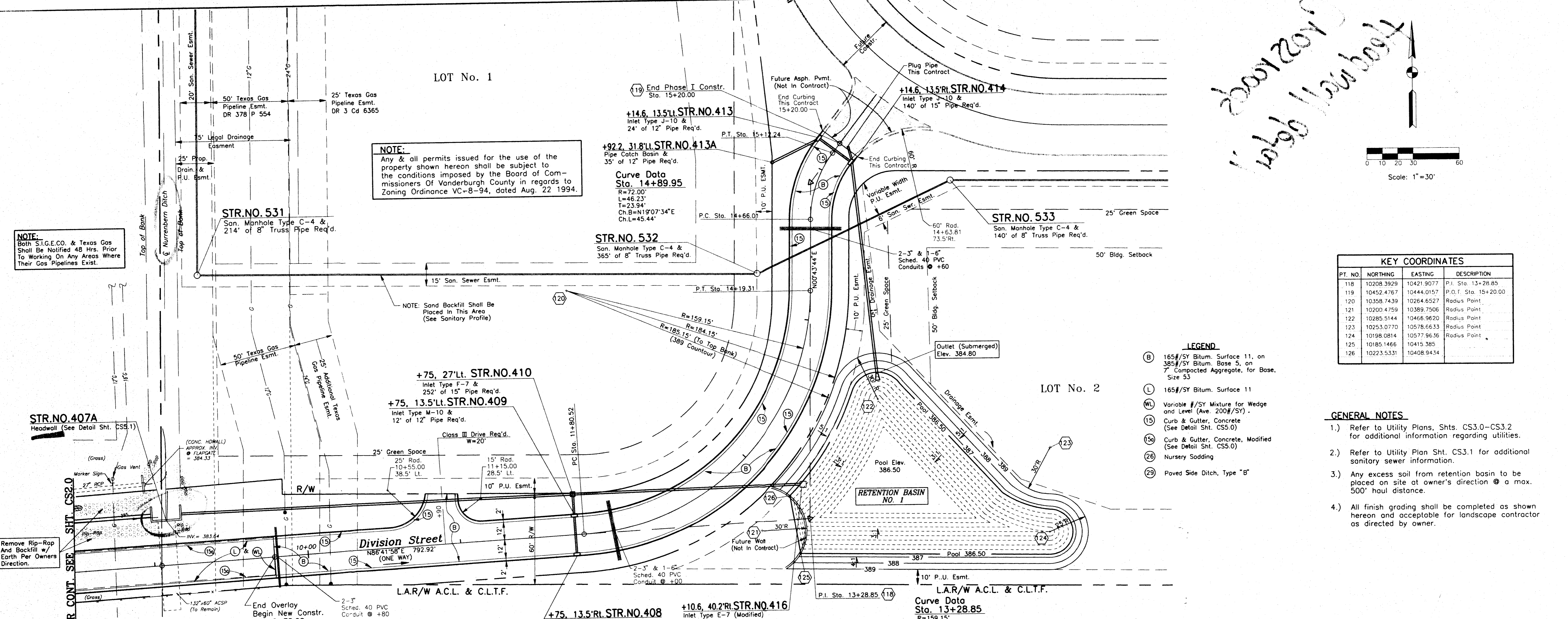
**NOTE:**  
Both S.I.G.E.C.O. & Texas Gas Shall Be Notified 48 Hrs. Prior To Working On Any Areas Where Their Gas Pipelines Exist.

KEY COORDINATES			
PT. NO.	NORTHING	EASTING	DESCRIPTION
118	10208.3929	10421.9077	P.I. Sta. 13+28.85
119	10452.4767	10444.0157	P.O.T. Sta. 15+20.00
120	10358.7439	10264.6527	Radius Point
121	10200.4759	10389.7506	Radius Point
122	10285.5144	10466.9620	Radius Point
123	10253.0770	10578.6633	Radius Point
124	10198.0814	10577.9636	Radius Point
125	10185.1466	10415.385	Radius Point
126	10223.5331	10408.9434	Radius Point

- LEGEND**
- (B) 165#/SY Bitum. Surface 11, on 385#/SY Bitum. Base 5, on 7" Compacted Aggregate, for Base, Size 53
  - (L) 165#/SY Bitum. Surface 11
  - (WL) Variable #/SY Mixture for Wedge and Level (Ave. 200#/SY)
  - (15) Curb & Gutter, Concrete (See Detail Sht. CS5.0)
  - (15a) Curb & Gutter, Concrete, Modified (See Detail Sht. CS5.0)
  - (26) Nursery Sodding
  - (29) Paved Side Ditch, Type "B"

**GENERAL NOTES**

- 1.) Refer to Utility Plans, Shts. CS3.0-CS3.2 for additional information regarding utilities.
- 2.) Refer to Utility Plan Sht. CS3.1 for additional sanitary sewer information.
- 3.) Any excess soil from retention basin to be placed on site at owner's direction @ a max. 500' haul distance.
- 4.) All finish grading shall be completed as shown hereon and acceptable for landscape contractor as directed by owner.



**PLAN AND PROFILE FOR CROSSROADS**  
VANDERBURGH COUNTY, INDIANA

Prepared By: **BERNARDIN LOCHMUELLER & ASSOC., INC.**  
Planners - Engineers - Surveyors

DATE: 9-19-94  
PROJECT NO.: 93-133-1  
ISSUED: 10-7-94

**CS2.1**