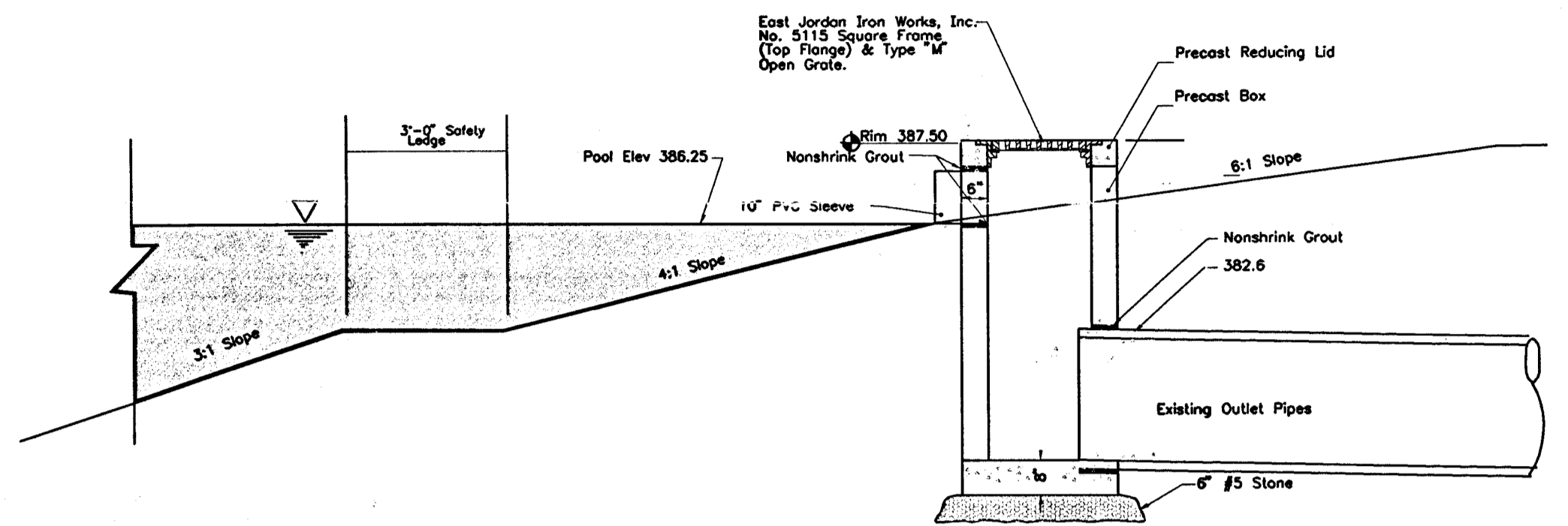
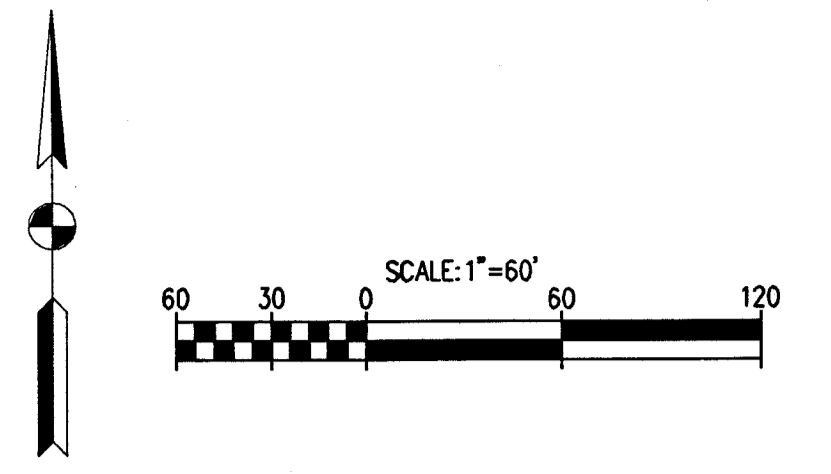
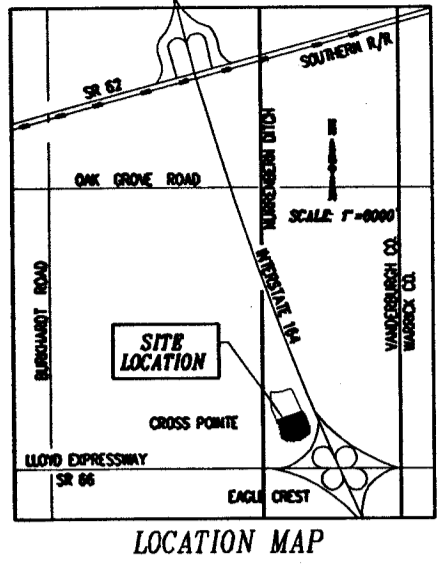


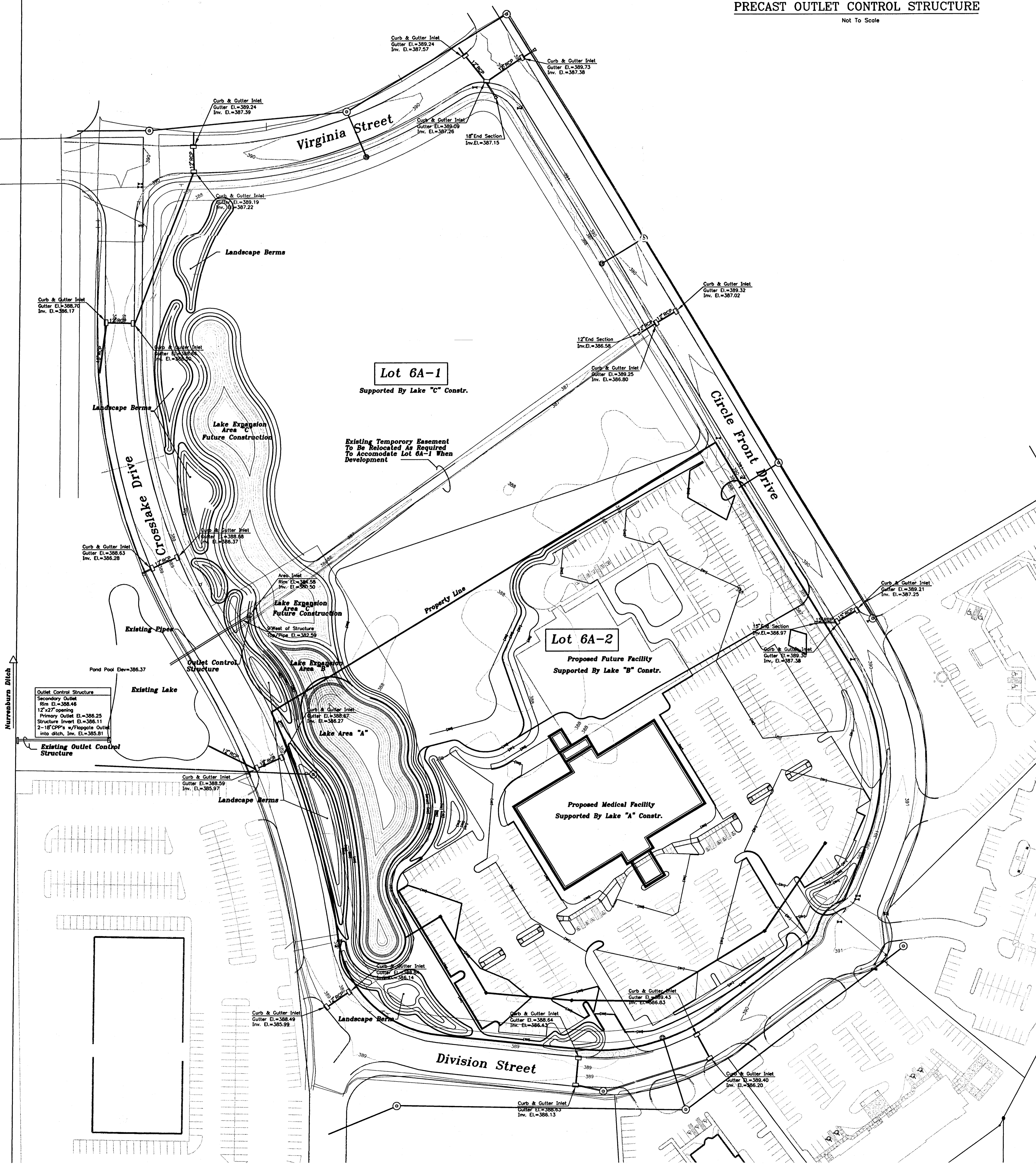
RECEIVED BY THE  
VANDERBURGH COUNTY  
SURVEYOR'S OFFICE  
5-70-03

# Drainage Plan For Replat Lot 6 Crossroads Commercial Center



**PRECAST OUTLET CONTROL STRUCTURE**

Not To Scale



Outlet Control Structure  
Secondary Outlet  
Rim El.=388.46  
12" x 27" opening  
Primary Outlet El.=386.25  
Structure Invert El.=386.11  
2-18" CPP's w/ Floppate Outlet  
into ditch, Inv. El.=385.81

**Lot 6A-1**  
Supported By Lake "C" Constr.

**Lot 6A-2**  
Proposed Future Facility  
Supported By Lake "B" Constr.

**Proposed Medical Facility**  
Supported By Lake "A" Constr.

Existing Temporary Easement  
To Be Relocated As Required  
To Accommodate Lot 6A-1 When  
Development