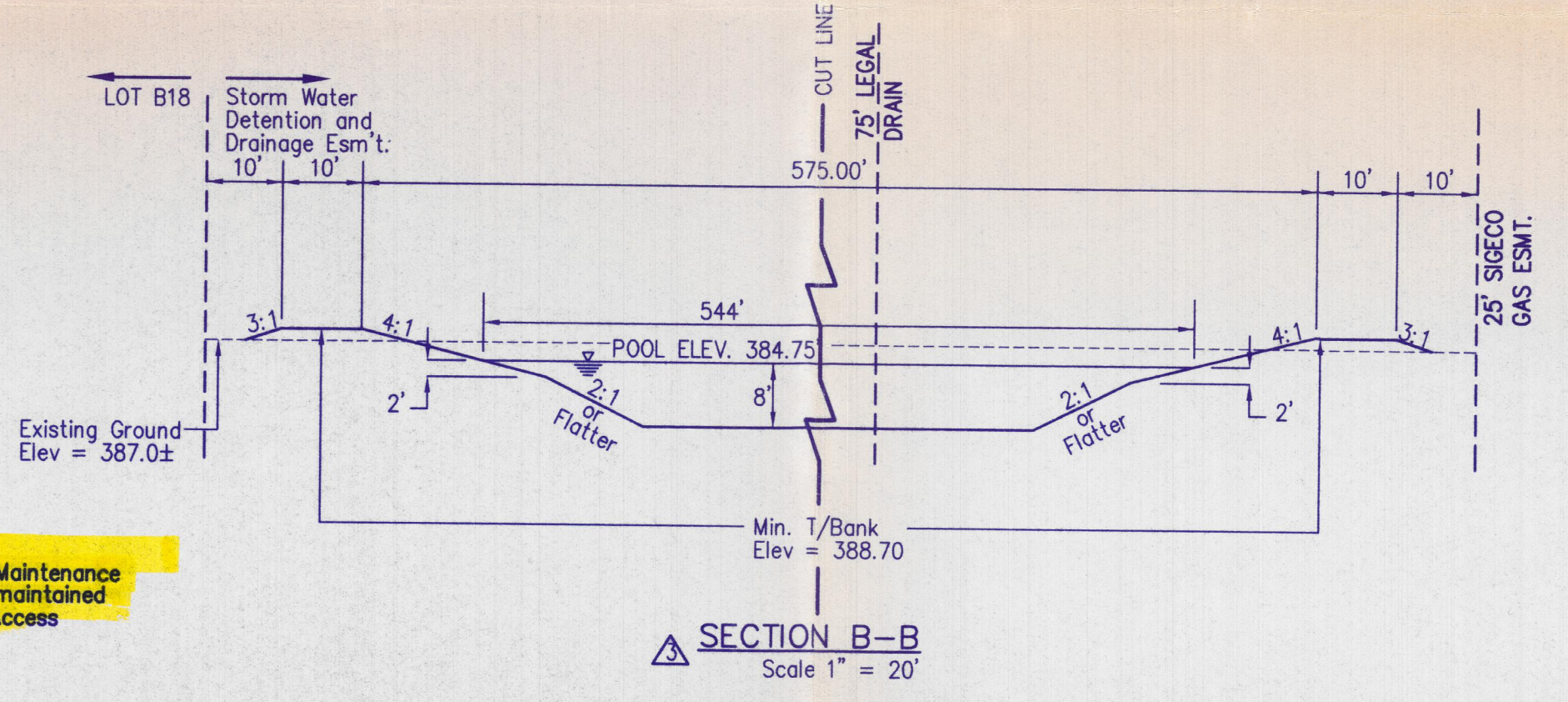
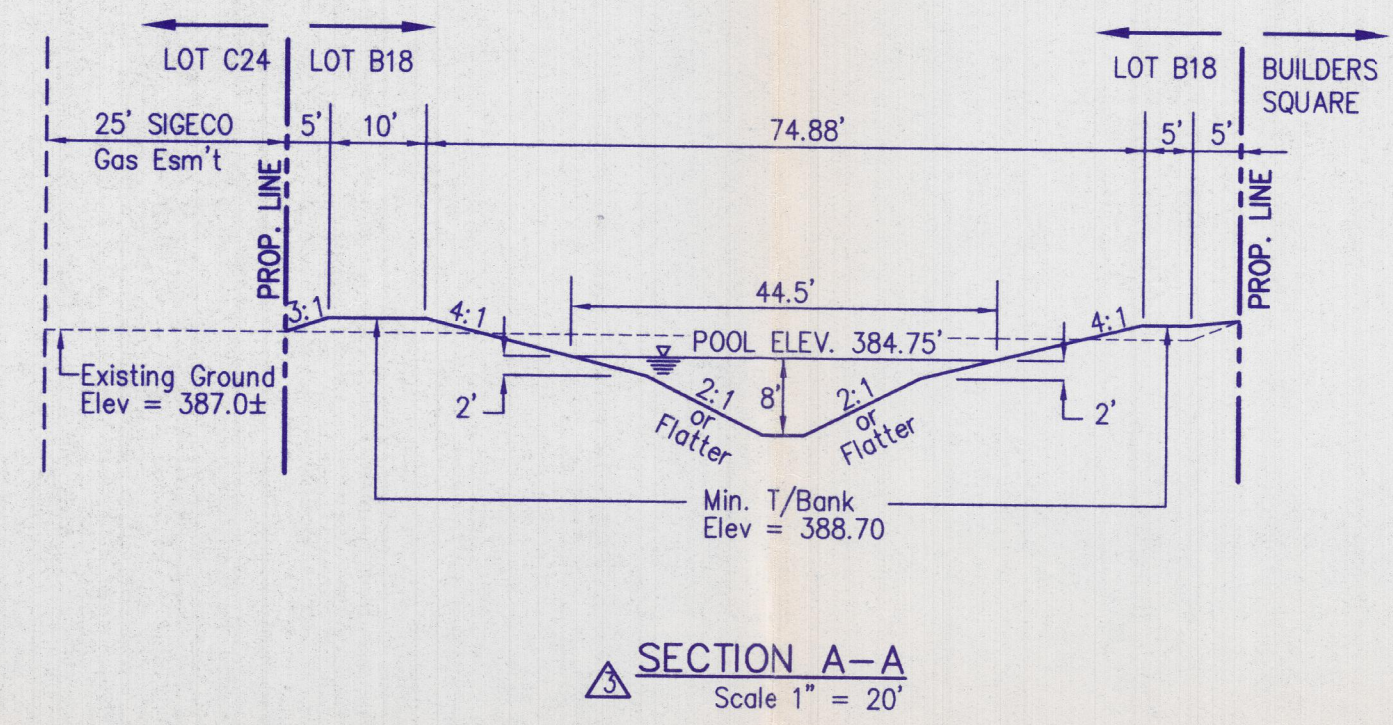
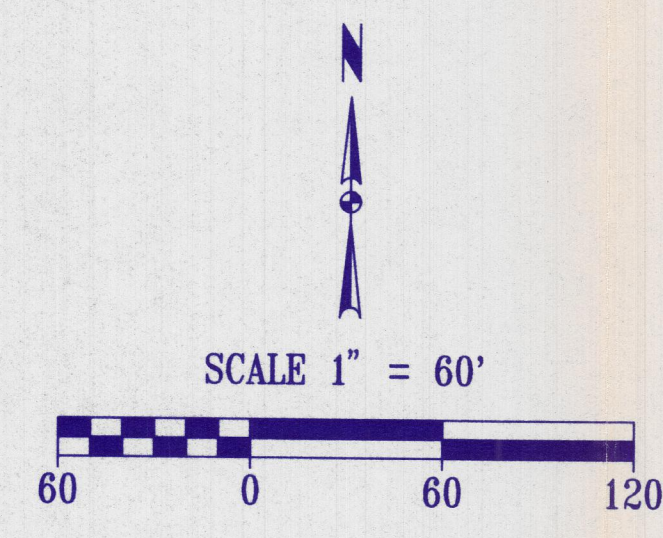
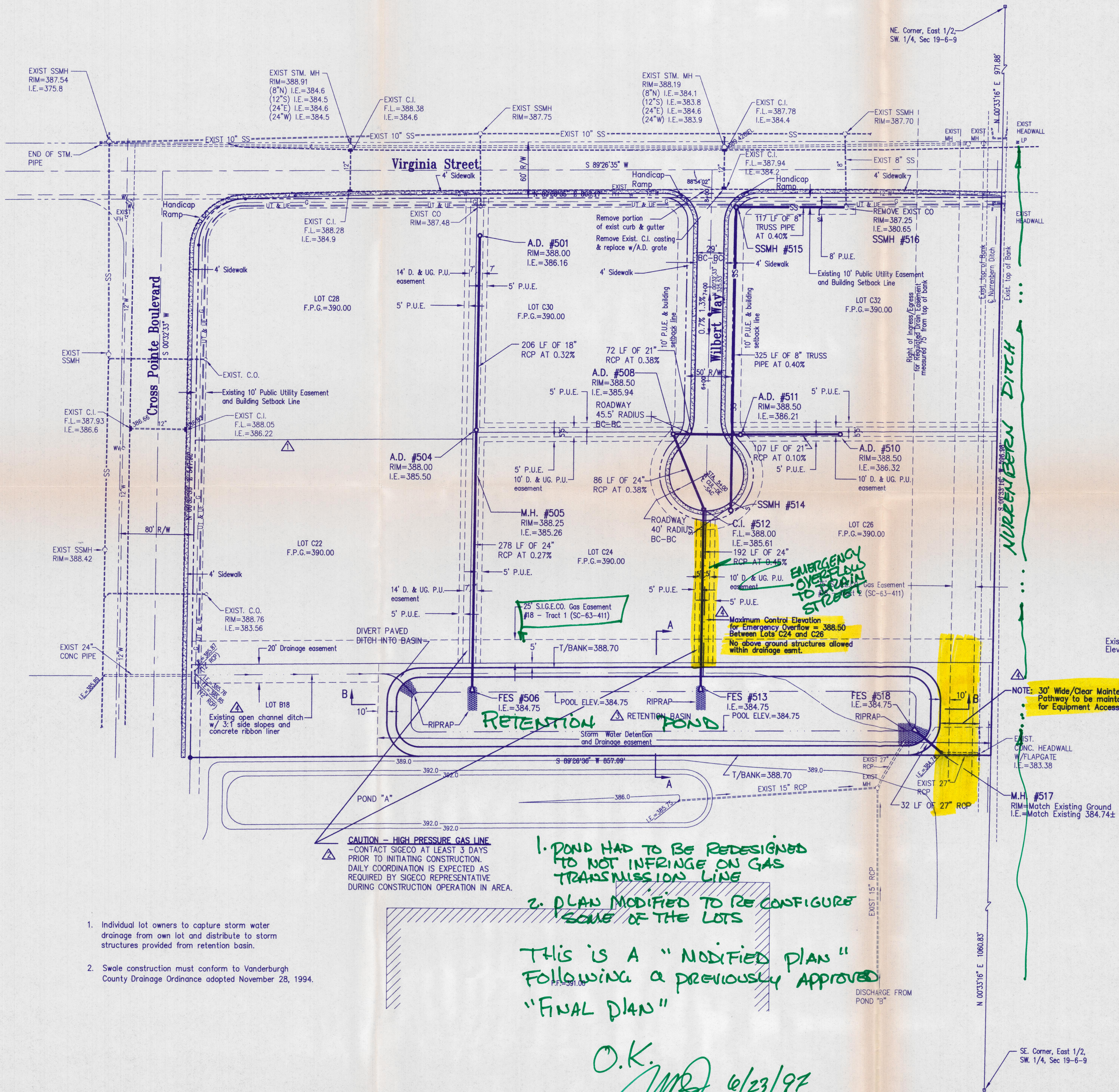
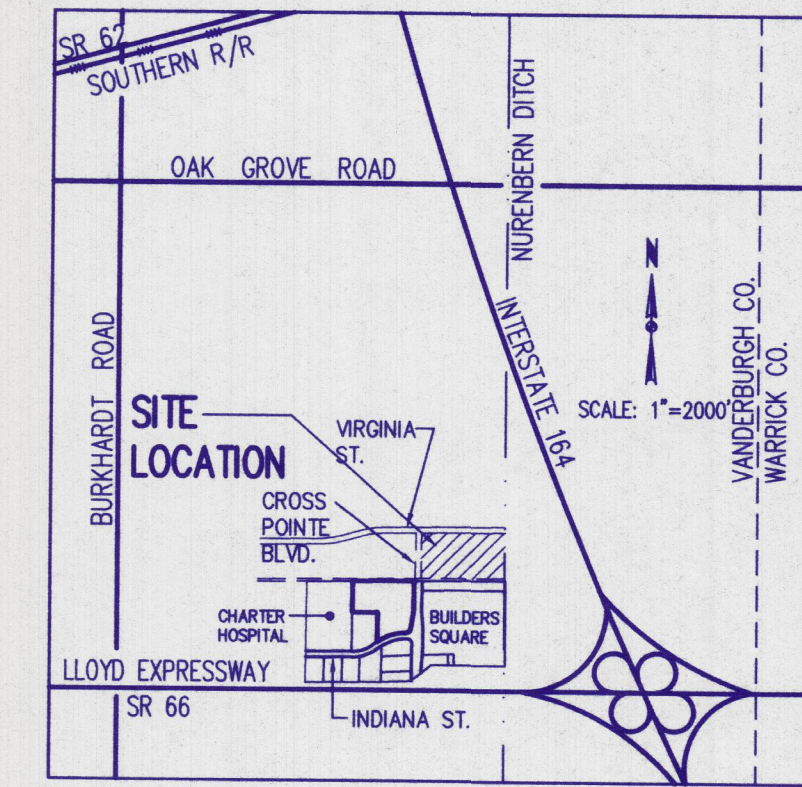


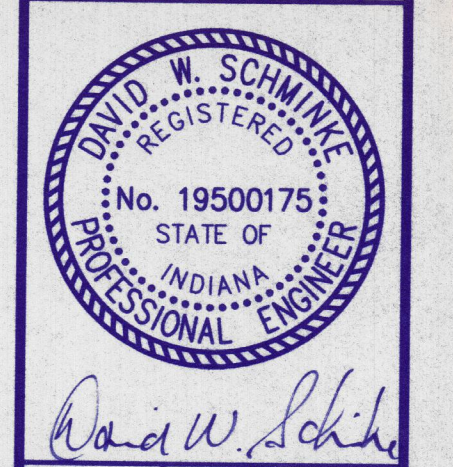
CROSS POINTE - SECTION 4



Morley and Associates, Inc.
 Consulting Engineers/Surveyors/Architects
 605 S.E. Martin Luther King Jr. Blvd.
 Evansville, Indiana 47713
 (812) 464-9585

All ideas, designs, calculations, and arrangements indicated or represented by this drawing are owned by and the property of Morley and Associates, Inc. and were created for the use and benefit of the project owner. No part of this drawing may be reproduced, stored in a retrieval system, or transmitted in any form or by any means, electronic, mechanical, photocopying, recording, or by any information storage and retrieval system, without the written permission of Morley and Associates, Inc. Written dimensions on these drawings shall have precedence over scale dimensions. Contractors shall verify and be responsible for the accuracy of all dimensions and elevations shown on the drawings and conditions shown by these drawings.

No.	By	Date	Description
1	R.S.L.	5/15/97	Revised lot line between Lots C28 - C22
2	R.S.L.	6/2/97	Relocated AD# 501, removed permits.
3	R.S.L.	6/2/97	Added high pressure gas line note between Lots C28-C22.
4	R.S.L.	6/10/97	Additions to Drainage Basin and X-Sections
5	R.S.L.	6/20/97	Drainage Notes Added



Project: Regency Properties
 Cross Pointe - Section 4
 Vanderburgh County, Indiana
 Sheet Title: Drainage/Utility Plan

Scale: 1"=60'
 Designed By: D.J.H. Job Number: 3310-4
 Drawn By: G.A.H. Date: 7-22-96
 Checked By: File Name: 3310DRN.DWG
 Sheet Number: 3 of 7

CAUTION - HIGH PRESSURE GAS LINE - CONTACT SIGECO AT LEAST 3 DAYS PRIOR TO INITIATING CONSTRUCTION. DAILY COORDINATION IS EXPECTED AS REQUIRED BY SIGECO REPRESENTATIVE DURING CONSTRUCTION OPERATION IN AREA.

1. POND HAD TO BE REDESIGNED TO NOT INFRINGE ON GAS TRANSMISSION LINE
 2. PLAN MODIFIED TO RECONFIGURE SOME OF THE LOTS

THIS IS A "MODIFIED PLAN" FOLLOWING A PREVIOUSLY APPROVED "FINAL PLAN"

O.K. [Signature] 6/23/97

Storage Volume Required - 66,994 cu.ft.
 Storage Volume Provided - 101,214 cu.ft. (to Elevation 388.00)

- Individual lot owners to capture storm water drainage from own lot and distribute to storm structures provided from retention basin.
- Swale construction must conform to Vanderburgh County Drainage Ordinance adopted November 28, 1994.

SE Corner, East 1/2, SW 1/4, Sec 19-6-9

JUN 20 1997

4/20/2021