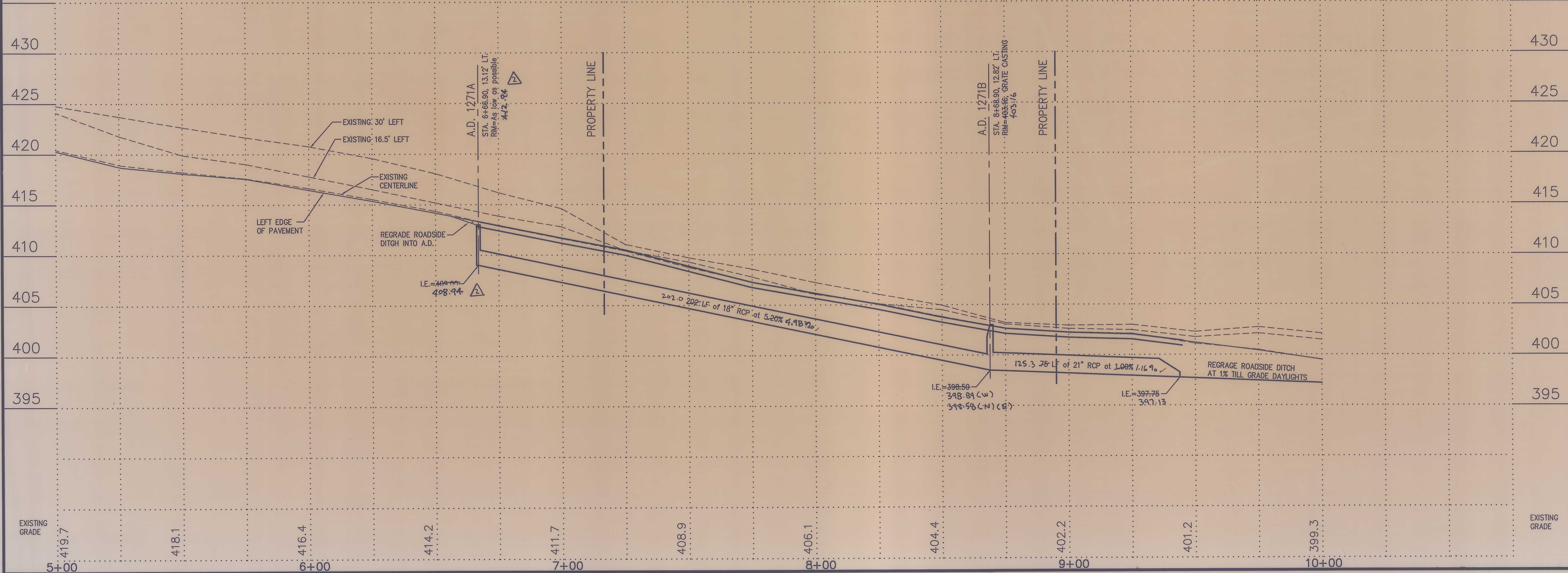


SCALES:  
 1" = 20' HOR  
 1" = 5' VER



**Morley and Associates, Inc.**  
 Consulting Engineers/Surveyors/Architects  
 605 S.E. Martin Luther King, Jr. Blvd.  
 Evansville, Indiana 47713  
 (812) 464-9585

No.	By	Date	Description
1	J.E.M.	4/14/97	Revise grades and casting elevations
2	J.E.M.	5/12/96	STORM SEWER A-5 BUILTS

James O. Morley  
 REGISTERED PROFESSIONAL ENGINEER  
 No. 13817  
 STATE OF INDIANA

Project: Clear Creek Village - Section 1  
 Sheet Title: Mt. Pleasant Road Plan and Profile

Scale: 1" = 20' HORZ.  
 1" = 5' VERT.

Designed By: J.E.M. Job Number: 96-3309-1(A)(A2)  
 Drawn By: GAH Date: 10-08-96  
 Checked By: File Name: RCP0101.DWG  
 Sheet Number: 4 of 16

All ideas, designs, calculations, and arrangements indicated or represented by this drawing are owned by and the property of Morley and Associates, Inc. No part of this drawing may be reproduced, stored in a retrieval system, or transmitted in any form or by any means, electronic, mechanical, photocopying, recording, or by any information storage and retrieval system, without the written permission of Morley and Associates, Inc. Written dimensions on these drawings shall have precedence over scale dimensions. Contractors shall verify and be responsible for scale dimensions. Contractors shall be notified of any variations from the dimensions and conditions shown by these drawings.