



Date: 09-23-13

Steve Beasley

Hazex Construction  
P.O. Box 357  
Henderson, Ky. 42420

**Re: SDCI #419702/ Cayman Ridge Subdivision Box Culvert**

We are sending you, attached:

- Submittal details-file copy only
- Submittal details for approval

To ensure quality service, and to aid you with your desired work schedule please return this submittal package with any comments/corrections in a timely fashion so that we can begin the production and management of your project.

- Submittal details for production prior to engineer's approval

- Request of production prior to engineer's approval requires contractor/customer to accept purchase and delivery without exception
- Your approval verification below must be returned to SDCI's Engineering Department before production can be scheduled (see below)

I, \_\_\_\_\_, understand that I am instructing SDCI to proceed with production without the Engineer's submittal approval; therefore, I agree that all financial responsibility rests with me regardless of any changes made by the Engineer that may occur after the fact.

Signature: \_\_\_\_\_ Date: \_\_\_\_\_

- Detailed submittal drawings for non-standard structures

For all non-standard items a detailed submittal drawing is created and must be reviewed by the contractor and the Project Engineer to ensure accuracy before SDCI can produce any non-standard structure.

COPIES	DATE	DESCRIPTION
1 (Via E-Mail)	09-23-13	Typical submittal drawings for the 8' x 4' box culvert on this project.

The above items are transmitted for your review and approval. Please contact your project manager with any questions.

Project Manager: David Bolton  
Phone – (859) 381-6685  
Email – dbolton@shermamdixie.com

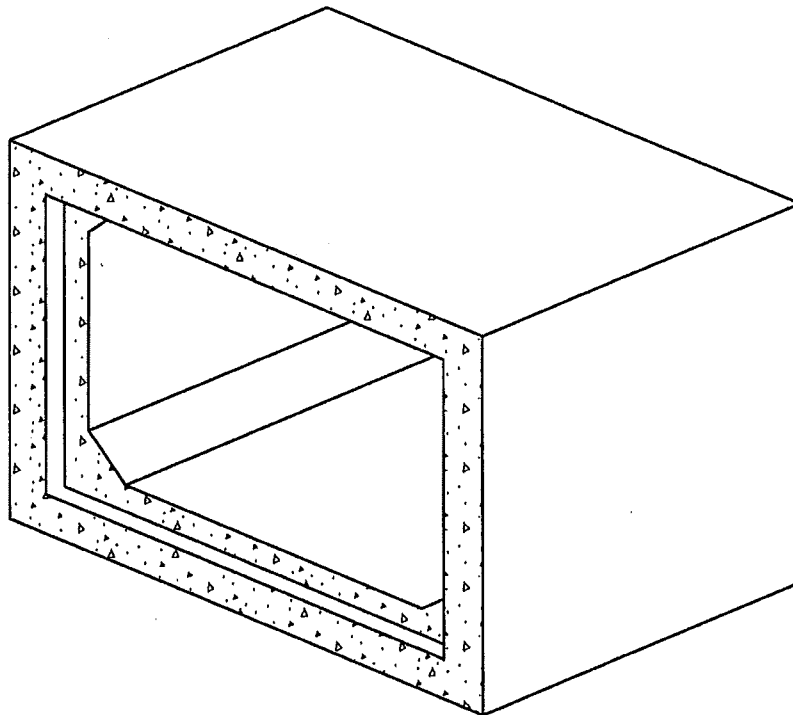
CC: Bill Thompson – Sales/Engineering Manager

CORPORATE OFFICE  
200 42<sup>nd</sup> Avenue North  
Nashville, Tennessee 37209  
800-737-0707

[www.shermamdixie.com](http://www.shermamdixie.com)

LEXINGTON PLANT LOCATION  
759 Phillips Lane  
Lexington, Kentucky 40504  
(859) 254-4242

# PRECAST BOX CULVERTS



SHERMANDIXIE

PRECAST BOX CULVERT

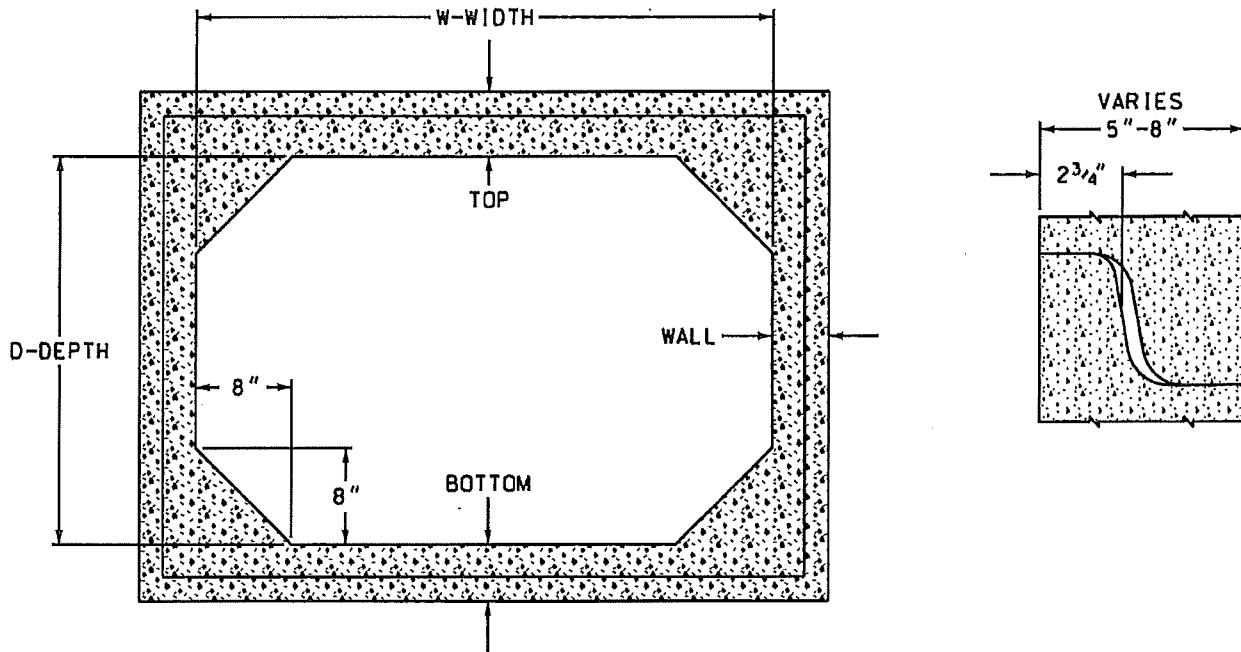
SCALE: NTS

PH# 1-800-737-0707

DWG# BX-100

DATE: 09/08/08

SHEET# 1 OF 1



ASTM C-1433 PRECAST BOX (0'-2' OF COVER)  
OR LATEST REVISION

SIZE WxD	TOP SLAB	BOTTOM	WALLS	WT./FT.	WT./ 8' SECT.	AREA (SQ.FT.)
4' x 2'	8"	6"	5"	1,224	9,797	7.1
4' x 3'	8"	6"	5"	1,358	10,865	11.1
4' x 4'	8"	6"	5"	1,450	11,600	15.1
6' x 4'	8"	7"	7"	2,180	17,440	23.1
6' x 6'	8"	7"	7"	2,530	20,240	35.1
8' x 4'	8"	8"	8"	2,800	22,400	31.1
8' x 6'	8"	8"	8"	3,200	25,600	47.1
8' x 8'	8"	8"	8"	3,600	28,800	63.1

← 40 LF REQUIRED. →

ASTM C-1433 PRECAST BOX GREATER THAN  
2' OF COVER OR LATEST REVISION

SIZE WxD	TOP SLAB	BOTTOM & WALLS	WT./FT.	WT./ 8' SECT.	AREA (SQ.FT.)
4' x 2'	5"	5"	991	7,928	7.1
4' x 4'	5"	5"	1,237	9,900	15.1
6' x 3'	7"	7"	1,916	15,331	17.1
6' x 4'	7"	7"	2,100	16,800	23.1
6' x 6'	7"	7"	2,437	19,500	35.1
8' x 4'	8"	8"	2,800	22,400	31.1
8' x 5'	8"	8"	3,020	24,160	39.1
8' x 6'	8"	8"	3,200	25,600	47.1
8' x 8'	8"	8"	3,600	28,800	63.1

**GENERAL NOTES:**

1. BOX CULVERT IS MANUFACTURED TO MEET OR EXCEED ASTM C-1433 (LATEST REVISION): "STANDARD SPECIFICATION FOR PRECAST REINFORCED CONCRETE BOX SECTIONS FOR CULVERTS, STORM DRAINS, AND SEWERS".
2. BOX CULVERT MAY USE BUTYL MASTIC, MORTAR, OR OVERWRAP FOR SEALING JOINT.
3. EACH SECTION HAS A 8'-0" LAYING LENGTH.
4. WEIGHTS BASED ON 150 lb/ft<sup>3</sup> CONCRETE.
5. F.H.W.A. "BOXCAR" DESIGN AVAILABLE FOR REDUCING WALL AND SLAB THICKNESS.
6. SEE SDCI REP. FOR SPECIAL DESIGNS.

★  
**SHERMANDIXIE**

ASTM C-1433 PRECAST BOX CULVERTS

SCALE: NTS

PH\* 1-800-737-0707

DWG# BX-106

DATE: 09/08/08

SHEET# 1 OF 1