

FLOODWAY DELINEATION IS SCALED FROM THE CASTLE CREEK SUBDIVISION, PLAT BOOK "D", PAGE 144, FIRM PANEL MAP 180256 0015 C, DATED AUGUST 5, 1991 DOES NOT DELINEATE THE RUSHER CREEK FLOODWAY EAST OF HIGHWAY 41.

FLOODWAY DELINEATION IS SCALED FROM THE CASTLE CREEK SUBDIVISION, PLAT BOOK "D", PAGE 144, FIRM PANEL MAP 180256 0015 C, DATED AUGUST 5, 1991 DOES NOT DELINEATE THE RUSHER CREEK FLOODWAY EAST OF HIGHWAY 41.

Scale 1" = 20'

NOTES:

- ALL LIGHT POLES ARE TO BE 30' TALL EQUIPPED w/ 1000 W BULBS (7) REQUIRED. BASES BY CONCRETE CONTRACTOR CONTROLLED BY TIMER, ON AT 5:00 P.M. & OFF AT 12:00 A.M. ALL EXTERIOR LIGHTS TO BE TIED INTO THIS TIMER.
- 109 PARKING SPACES AVAILABLE
- STRIPING TO BE PAINTED 2-COATS WHITE. DO NOT PAINT DIRECTIONAL ARROWS
- SEWER & WATER UTILITIES ARE EXISTING.
- MAIN ELECTRICAL UTILITY BY OWNER / DEVELOPER.
- SURVEYING & DRAINAGE PLANS BY ANDY EASLEY ENGINEERING.
- (3) HANDICAP POLE SIGNS ARE REQUIRED.
- BRICK MONUMENT SIGN BY G.C. / LETTERING BY TENANT.
- NO WORK TO TAKE PLACE WITHIN FLOODWAY OR BEST DRAINAGE EASEMENTS UNLESS AUTHORIZED IN WRITING BY CASTLE CONSTRUCTION.
- SEE UTILITY PLAN FOR LOCATIONS OF SEWER, WATER, ELECTRICAL & PHONE LINES.
- SEE LANDSCAPE PLAN FOR ACTUAL DESIGN & DETAILS.
- SEE DUMPSTER & SIGN PLANS FOR ACTUAL DESIGN & DETAILS.

- 3/4" REBAR WITH BLA 0030 CAP FOUND
- CHISELED "X" FOUND
- 5/8" IRON ROD WITH EASLEY S0006 CAP SET
- SANITARY SEWER MANHOLE
- STORM SEWER CURB INLET
- STORM SEWER BEEHIVE INLET
- TELEPHONE PEDESTAL
- UTILITY POLE
- WATER VALVE
- WATER METER
- GAS VALVE
- GAS PIPELINE MARKER
- OHU OVERHEAD UTILITIES

F.P.G FLOOD PROTECTION GRADE

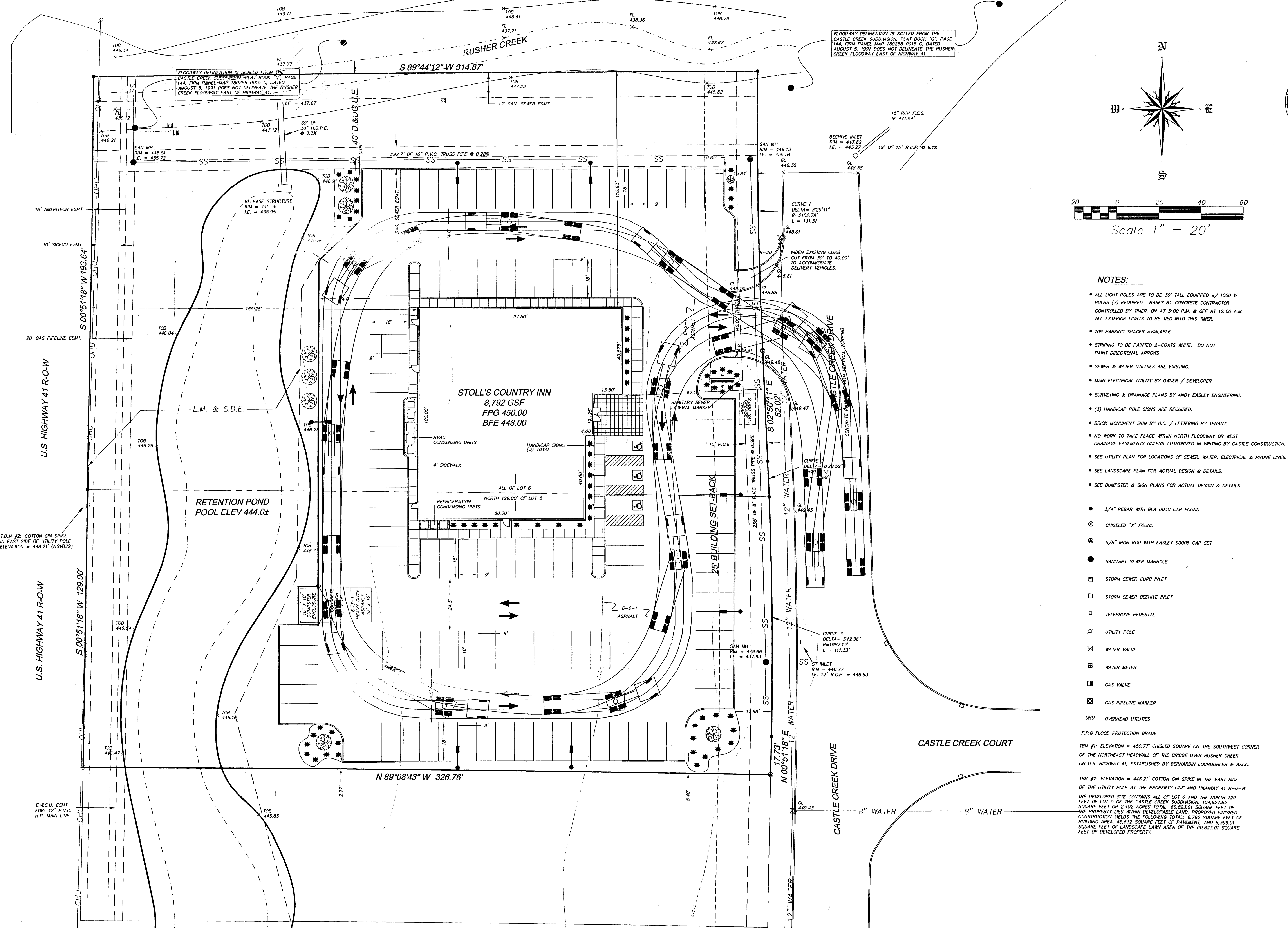
TBM #1: ELEVATION = 450.77' CHISELED SQUARE ON THE SOUTHWEST CORNER OF THE NORTHEAST HEADWALL OF THE BRIDGE OVER RUSHER CREEK ON U.S. HIGHWAY 41, ESTABLISHED BY BERNARDIN LOCHMUEHLER & ASSOC.

TBM #2: ELEVATION = 448.21' COTTON GIN SPIKE IN THE EAST SIDE OF THE UTILITY POLE AT THE PROPERTY LINE AND HIGHWAY 41 R-O-W THE DEVELOPED SITE CONTAINS ALL OF LOT 6 AND THE NORTH 129 FEET OF LOT 5 OF THE CASTLE CREEK SUBDIVISION, 104,827.62 SQUARE FEET OR 2.402 ACRES TOTAL. 60,823.01 SQUARE FEET OF THE PROPERTY LIES WITHIN DEVELOPABLE LAND. PROPOSED FINISHED CONSTRUCTION YIELDS THE FOLLOWING TOTAL: 8,792 SQUARE FEET OF BUILDING AREA, 45,632 SQUARE FEET OF PAVEMENT, AND 6,309.01 SQUARE FEET OF LANDSCAPE LAWN AREA OF THE 60,823.01 SQUARE FEET OF DEVELOPED PROPERTY.

ANDY EASLEY ENGINEERING
CIVIL ENGINEERING (812) 424-2481 LAND SURVEYING
EVANSVILLE, INDIANA 47710
1183 WEST MILL ROAD

STOLLS COUNTRY INN - TRAFFIC PLAN
CASTLE CONSTRUCTION
19820 CASTLE CREEK DRIVE
VANDERBURGH CO., IN

DATE: 05-30-02	DRAWN BY: JKS
DESIGN NO: 2325	CHECKED BY:
REVISIONS	SCALE: 1" = 20'
1 OF 1	



NOT TO BE REPRODUCED WITHOUT THE WRITTEN CONSENT OF ANDY EASLEY ENGINEERING, INC.