

REVISIONS	
1	REVISED 05-20-02
2	
3	
4	RECEIVED
5	JUN 04 2002
6	SITE REVIEW
7	
8	

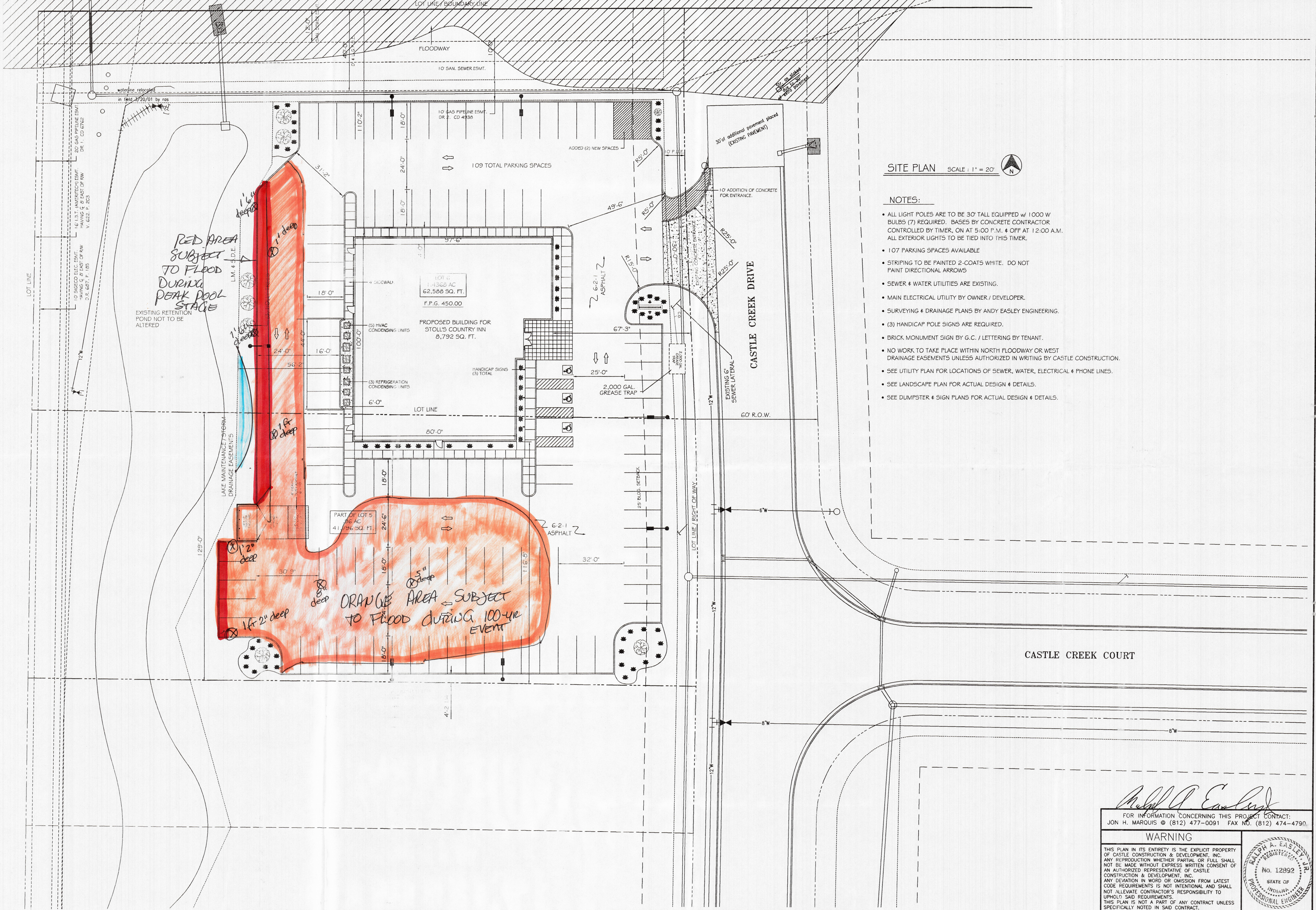
CONSTRUCTION PLANS PREPARED BY  
**ANDY EASLEY ENGINEERING**  
 CIVIL ENGINEERING (812) 424-2611 LAND SURVEYING  
 1138 WEST MILL ROAD EVANSVILLE, INDIANA 47110

**CASTLE**  
 DESIGN • ENGINEERING • CONSTRUCTION MANAGEMENT  
 CONSTRUCTION & DEVELOPMENT, INC.  
 245 S. GOTTLEBERG AVENUE, SUITE 200  
 EVANSVILLE, INDIANA 47715  
 PHONE: (812) 477-0051 FAX: (812) 474-4750  
 www.castleinc.com

**SITE PLAN**  
 PROJECT  
 PROPOSED BUILDING FOR  
**STOLL'S COUNTRY INN**  
 19820 CASTLE CREEK DR., EVANSVILLE, IN 47725

DRAWN BY	DATE
JAK	08-30-01
CHECKED BY	DATE
RAE	5-30-02
JOB NUMBER	
22092	
SHEET NUMBER	

**S1**  
 2 of 22



**SITE PLAN** SCALE: 1" = 20'

- NOTES:**
- ALL LIGHT POLES ARE TO BE 30' TALL EQUIPPED w/ 1000 W BULBS (7) REQUIRED. BASES BY CONCRETE CONTRACTOR CONTROLLED BY TIMER, ON AT 5:00 P.M. & OFF AT 12:00 A.M. ALL EXTERIOR LIGHTS TO BE TIED INTO THIS TIMER.
  - 107 PARKING SPACES AVAILABLE
  - STRIPING TO BE PAINTED 2-COATS WHITE. DO NOT PAINT DIRECTIONAL ARROWS
  - SEWER & WATER UTILITIES ARE EXISTING.
  - MAIN ELECTRICAL UTILITY BY OWNER / DEVELOPER.
  - SURVEYING & DRAINAGE PLANS BY ANDY EASLEY ENGINEERING.
  - (3) HANDICAP POLE SIGNS ARE REQUIRED.
  - BRICK MONUMENT SIGN BY G.C. / LETTERING BY TENANT.
  - NO WORK TO TAKE PLACE WITHIN NORTH FLOODWAY OR WEST DRAINAGE EASEMENTS UNLESS AUTHORIZED IN WRITING BY CASTLE CONSTRUCTION.
  - SEE UTILITY PLAN FOR LOCATIONS OF SEWER, WATER, ELECTRICAL & PHONE LINES.
  - SEE LANDSCAPE PLAN FOR ACTUAL DESIGN & DETAILS.
  - SEE DUMPSTER & SIGN PLANS FOR ACTUAL DESIGN & DETAILS.

FOR INFORMATION CONCERNING THIS PROJECT CONTACT:  
 JON H. MARQUIS @ (812) 477-0091 FAX NO. (812) 474-4790

**WARNING**

THIS PLAN IN ITS ENTIRETY IS THE EXPLICIT PROPERTY OF CASTLE CONSTRUCTION & DEVELOPMENT, INC. ANY REPRODUCTION WHETHER PARTIAL OR FULL SHALL NOT BE MADE WITHOUT EXPRESS WRITTEN CONSENT OF AN AUTHORIZED REPRESENTATIVE OF CASTLE CONSTRUCTION & DEVELOPMENT, INC. ANY DEVIATION IN WORD OR OMISSION FROM LATEST CODE REQUIREMENTS IS NOT INTENTIONAL AND SHALL NOT ALLEVIATE CONTRACTOR'S RESPONSIBILITY TO UPHOLD SAID REQUIREMENTS. THIS PLAN IS NOT A PART OF ANY CONTRACT UNLESS SPECIFICALLY NOTED IN SAID CONTRACT.

**RALPH A. EASLEY, JR.**  
 REGISTERED PROFESSIONAL ENGINEER  
 No. 12892  
 STATE OF INDIANA