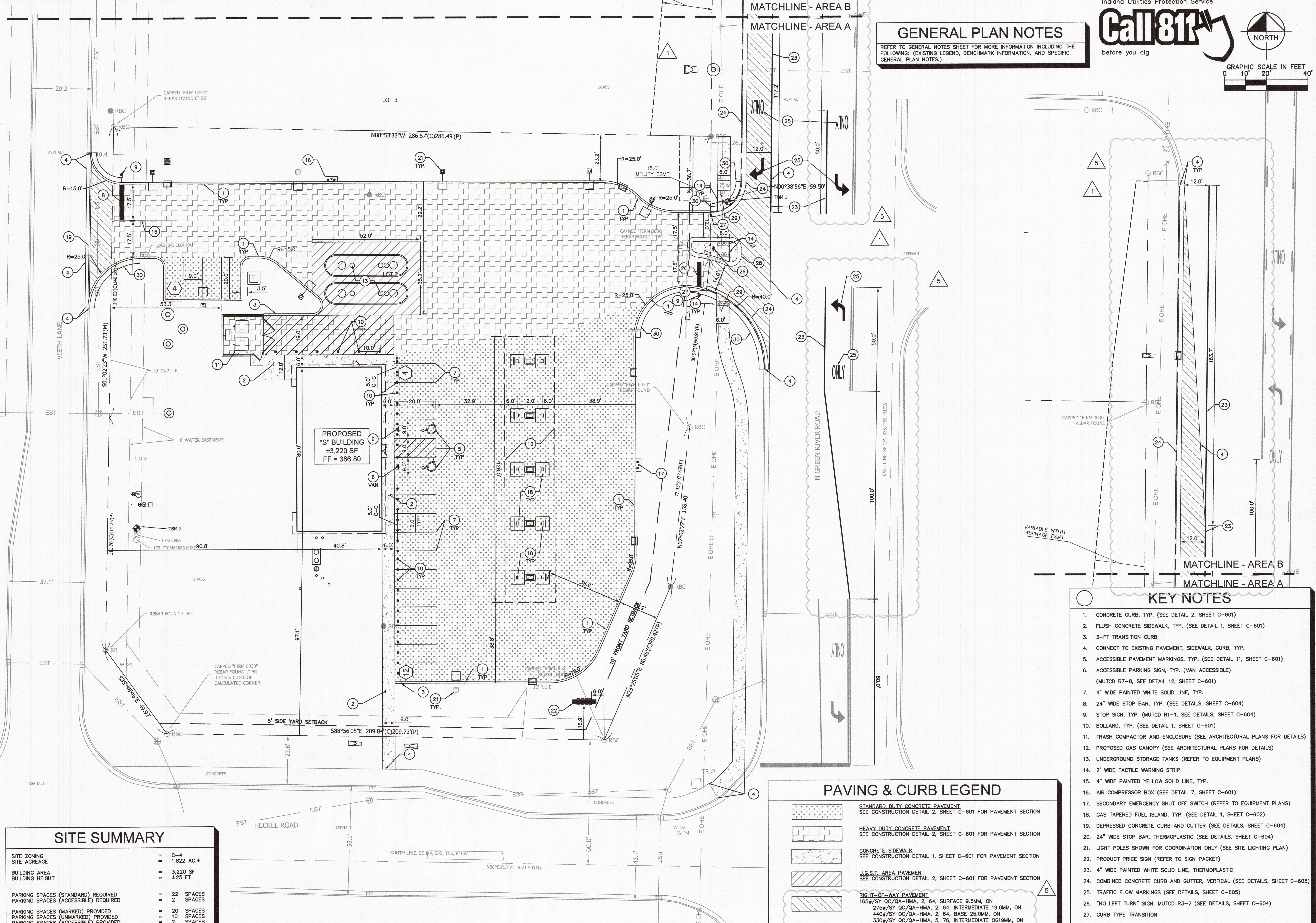




GENERAL PLAN NOTES
 REFER TO GENERAL NOTES SHEET FOR MORE INFORMATION INCLUDING THE FOLLOWING: (EXISTING LEGEND, BENCHMARK INFORMATION, AND SPECIFIC GENERAL PLAN NOTES.)



SITE SUMMARY	
SITE ZONING	= C-4
SITE ACREAGE	= 1.822 AC.±
BUILDING AREA	= 3,220 SF
BUILDING HEIGHT	= ±25 FT
PARKING SPACES (STANDARD) REQUIRED	= 22 SPACES
PARKING SPACES (ACCESSIBLE) REQUIRED	= 2 SPACES
PARKING SPACES (MARKED) PROVIDED	= 20 SPACES
PARKING SPACES (UNMARKED) PROVIDED	= 10 SPACES
PARKING SPACES (ACCESSIBLE) PROVIDED	= 2 SPACES
TOTAL PARKING SPACES PROVIDED	= 30 SPACES

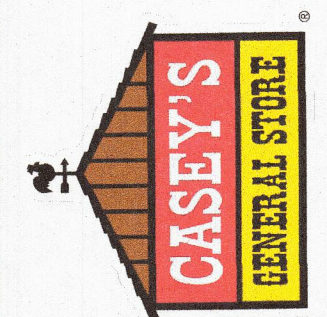
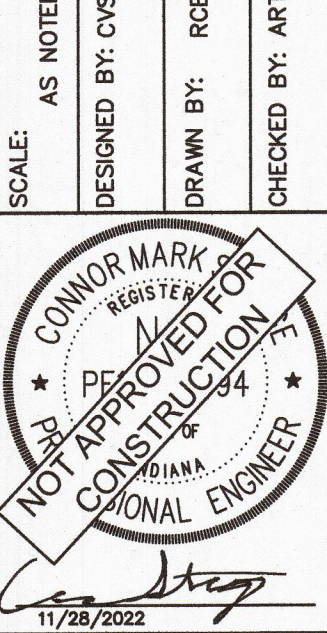
ROW PAVEMENT
 165#/SY QC/QA-HMA, 2, 64, SURFACE 9.5MM, ON
 275#/SY QC/QA-HMA, 2, 64, INTERMEDIATE 19.0MM, ON
 440#/SY QC/QA-HMA, 2, 64, BASE 25.0MM, ON
 330#/SY QC/QA-HMA, 5, 76, INTERMEDIATE 0619MM, ON

PAVING & CURB LEGEND	
	STANDARD DUTY CONCRETE PAVEMENT SEE CONSTRUCTION DETAIL 2, SHEET C-601 FOR PAVEMENT SECTION
	HEAVY DUTY CONCRETE PAVEMENT SEE CONSTRUCTION DETAIL 2, SHEET C-601 FOR PAVEMENT SECTION
	CONCRETE SIDEWALK SEE CONSTRUCTION DETAIL 1, SHEET C-601 FOR PAVEMENT SECTION
	U.G.S.T. AREA PAVEMENT SEE CONSTRUCTION DETAIL 2, SHEET C-601 FOR PAVEMENT SECTION
	RIGHT-OF-WAY PAVEMENT 165#/SY QC/QA-HMA, 2, 64, SURFACE 9.5MM, ON 275#/SY QC/QA-HMA, 2, 64, INTERMEDIATE 19.0MM, ON 440#/SY QC/QA-HMA, 2, 64, BASE 25.0MM, ON 330#/SY QC/QA-HMA, 5, 76, INTERMEDIATE 0619MM, ON SUBGRADE TREATMENT TYPE 1
	STANDARD CONCRETE CURB

- KEY NOTES**
- CONCRETE CURB, TYP. (SEE DETAIL 2, SHEET C-601)
 - FLUSH CONCRETE SIDEWALK, TYP. (SEE DETAIL 1, SHEET C-601)
 - 3-FT TRANSITION CURB
 - CONNECT TO EXISTING PAVEMENT, SIDEWALK, CURB, TYP.
 - ACCESSIBLE PAVEMENT MARKINGS, TYP. (SEE DETAIL 11, SHEET C-601)
 - ACCESSIBLE PARKING SIGN, TYP. (VAN ACCESSIBLE) (MUTCD R7-8, SEE DETAIL 12, SHEET C-601)
 - 4" WIDE PAINTED WHITE SOLID LINE, TYP.
 - 24" WIDE STOP BAR, TYP. (SEE DETAILS, SHEET C-604)
 - STOP SIGN, TYP. (MUTCD R1-1, SEE DETAILS, SHEET C-604)
 - BOLLARD, TYP. (SEE DETAIL 1, SHEET C-601)
 - TRASH COMPACTOR AND ENCLOSURE (SEE ARCHITECTURAL PLANS FOR DETAILS)
 - PROPOSED GAS CANOPY (SEE ARCHITECTURAL PLANS FOR DETAILS)
 - UNDERGROUND STORAGE TANKS (REFER TO EQUIPMENT PLANS)
 - 2" WIDE TACTILE WARNING STRIP
 - 4" WIDE PAINTED YELLOW SOLID LINE, TYP.
 - AIR COMPRESSOR BOX (SEE DETAIL 7, SHEET C-601)
 - SECONDARY EMERGENCY SHUT OFF SWITCH (REFER TO EQUIPMENT PLANS)
 - GAS TAPERED FUEL ISLAND, TYP. (SEE DETAIL 1, SHEET C-602)
 - DEPRESSED CONCRETE CURB AND GUTTER (SEE DETAILS, SHEET C-604)
 - 24" WIDE STOP BAR, THERMOPLASTIC (SEE DETAILS, SHEET C-604)
 - LIGHT POLES SHOWN FOR COORDINATION ONLY (SEE SITE LIGHTING PLAN)
 - PRODUCT PRICE SIGN (REFER TO SIGN PACKET)
 - 4" WIDE PAINTED WHITE SOLID LINE, THERMOPLASTIC
 - COMBINED CONCRETE CURB AND GUTTER, VERTICAL (SEE DETAILS, SHEET C-605)
 - TRAFFIC FLOW MARKINGS (SEE DETAILS, SHEET C-605)
 - "NO LEFT TURN" SIGN, MUTCD R3-2 (SEE DETAILS, SHEET C-604)
 - CURB TYPE TRANSITION
 - 2" CONCRETE ROLL CURB (SEE DETAILS, SHEET C-605)
 - ACCESSIBLE RAMP (SEE DETAILS, SHEET C-605)
 - LANDSCAPE PROTECTORS (SEE DETAILS, SHEET C-601)

NO.	DATE	BY	REVISIONS
1	06/25/21	CVS	CITY COMMENTS
2	07/30/21	CVS	UTILITY/CLIENT COMMENTS
3	09/26/22	CWB	CITY COMMENTS
4	10/31/22	DLG	CITY COMMENTS
5	11/28/22	CVS	COUNTY COMMENTS

Kimley-Horn
 ©2022 KIMLEY-HORN AND ASSOCIATES, INC.
 250 EAST 98TH STREET, SUITE 580,
 PHOENIX, AZ 85028
 PHONE: 317-218-9550
 WWW.KIMLEY-HORN.COM



Received by the
 Vanderburgh County
 Surveyor's Office
 NOV 29 2022

Time: 10:33 AM Initials: AK

SITE PLAN

**CASEY'S OF
 EVANSVILLE (#3968)**

ORIGINAL ISSUE:
 03/01/2021
 KHA PROJECT NO.
 170151001

SHEET NUMBER

C-101