

PIPE TABLES						
NAME	DN STRUCTURE	UP STRUCTURE	DOWN INVERT (FT)	UP INVERT (FT)	LENGTH (FT)	SLOPE (%)
P1	STR 100	SDI 101	431.00	431.50	5.10	9.80
P2	SDI 101	SDI 102	431.50	434.15	140.85	1.88
P3	SDI 102	SDI 103	434.15	436.55	73.39	3.27

STRUCTURE TABLES				
NAME	NORTHING	EASTING	RIM ELEV(FT)	INVERT-IN ELEV(FT)
STR 100	3003.98	4771.07	435.19	431.00
SDI 101	3009.08	4771.29	436.17	431.50
SDI 102	3130.59	4842.51	438.40	434.15
SDI 103	3203.28	4832.34	438.80	436.55

GENERAL NOTES:

1. ALL ROOF DRAINS WILL DISCHARGE TO THE SURFACE OR INTO BOOT CONNECTIONS OF NEW STORM SEWERS. NO DOWNSPOUTS WILL BE ALLOWED TO DISCHARGE ON HIGHWAY 41 SIDE OF THE BUILDING.

INSTALLATION OF THE STORM TECH STORM WATER DETENTION SYSTEM SHALL BE PERFORMED IN STRICT ACCORDANCE WITH THE MANUFACTURES GUIDELINES. CONTACT BOB GIDEON WITH ADS FOR ANY QUESTIONS.

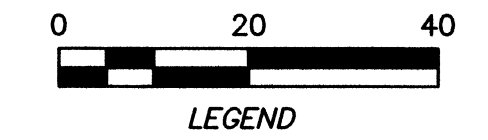
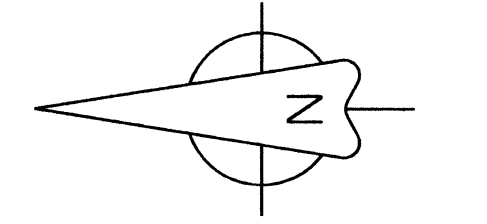
MAINTENANCE OF STORM TECH SYSTEM

The Isolator Row was designed to reduce the cost of periodic maintenance. By "isolating" sediments to just one row, costs are dramatically reduced by eliminating the need to clean out each row of the entire storage bed. If inspection indicates the potential need for maintenance, access is provided via a manhole(s) located on the end(s) of the row for cleanout. If entry into the manhole is required, please follow local and OSHA rules for a confined space entries.

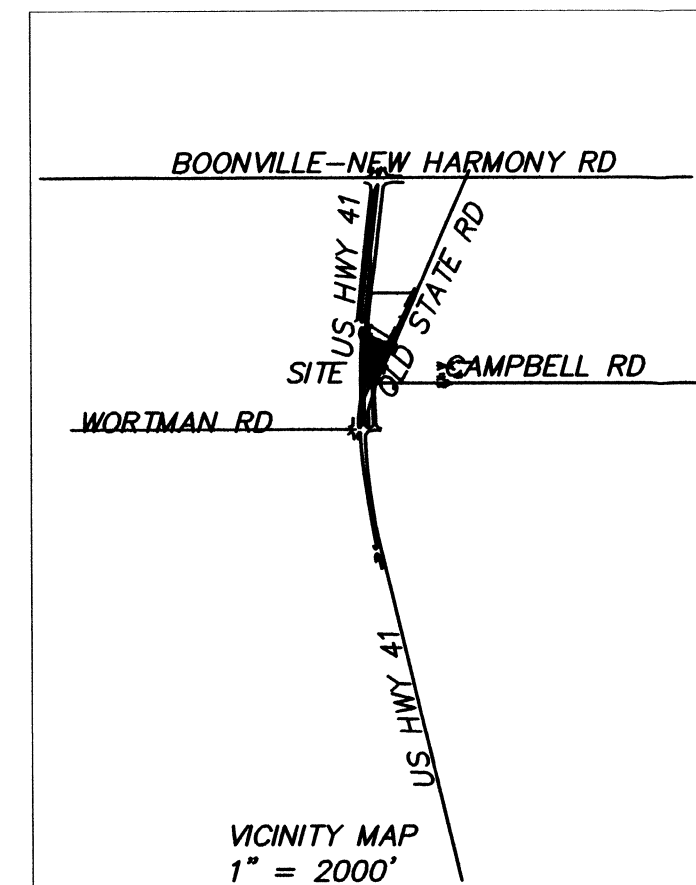
Maintenance is accomplished with the JetVac process. The JetVac process utilizes a high pressure water nozzle to propel itself down the Isolator Row while scouring and suspending sediments. As the nozzle is retrieved, the captured pollutants are flushed back into the manhole for vacuuming. Most sewer and pipe maintenance companies have vacuum/JetVac combination vehicles. Selection of an appropriate JetVac nozzle will improve maintenance efficiency. Fixed nozzles designed for culverts or large diameter pipe cleaning are preferable. Riser facing jets with an effective spread of at least 45° are best. Most JetVac reels have 400 feet of hose allowing maintenance of an Isolator Row up to 50 chambers long. The JetVac process shall only be performed on StormTech Isolator Rows that have AASHTO class I woven geotextile (as specified by StormTech) over their angular base stone.

KEY NOTES:

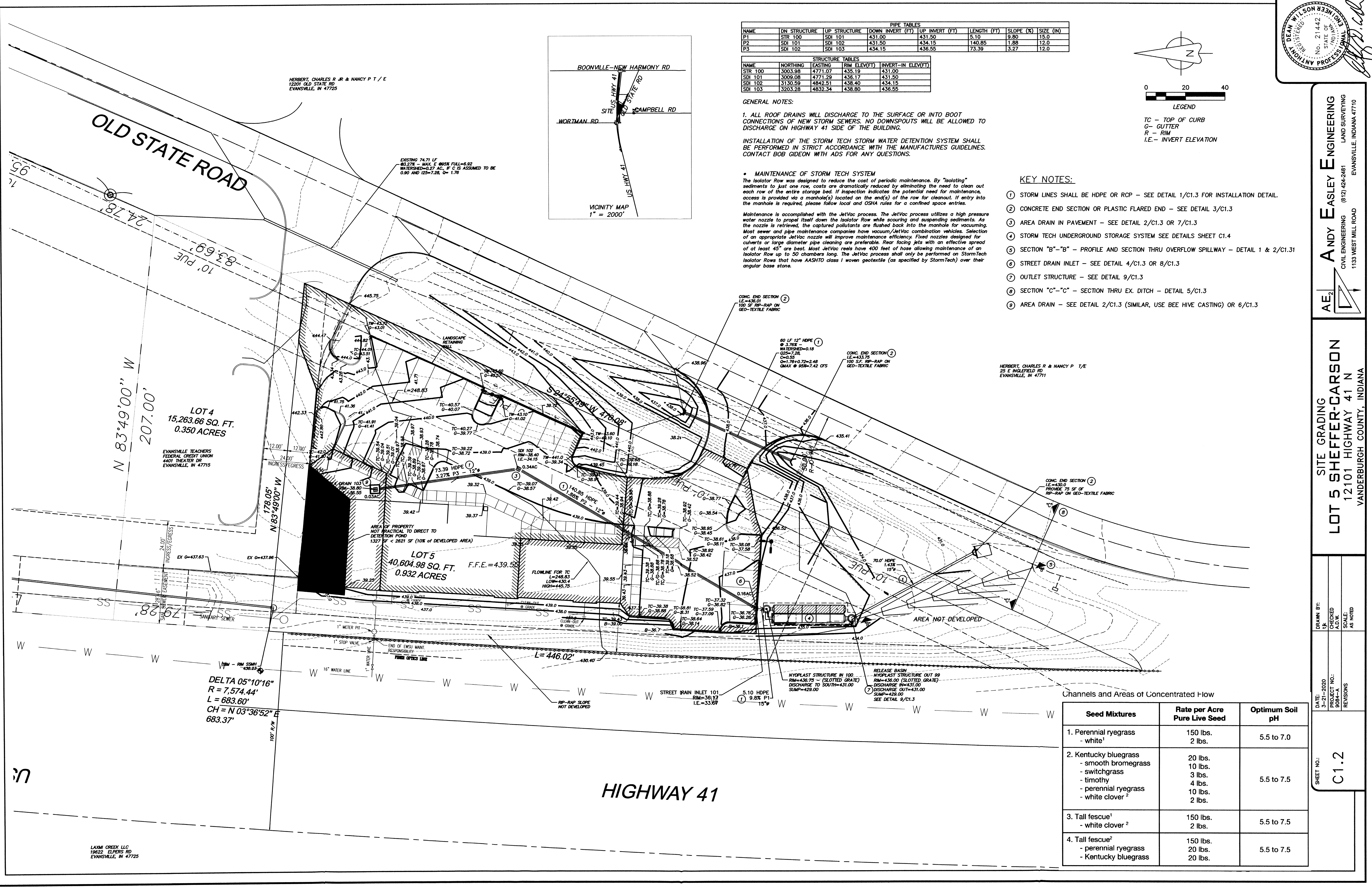
- STORM LINES SHALL BE HDPE OR RCP - SEE DETAIL 1/C1.3 FOR INSTALLATION DETAIL.
- CONCRETE END SECTION OR PLASTIC FLARED END - SEE DETAIL 3/C1.3
- AREA DRAIN IN PAVEMENT - SEE DETAIL 2/C1.3 OR 7/C1.3
- STORM TECH UNDERGROUND STORAGE SYSTEM SEE DETAILS SHEET C1.4
- SECTION "B"- "B" - PROFILE AND SECTION THRU OVERFLOW SPILLWAY - DETAIL 1 & 2/C1.31
- STREET DRAIN INLET - SEE DETAIL 4/C1.3 OR 8/C1.3
- OUTLET STRUCTURE - SEE DETAIL 9/C1.3
- SECTION "C"- "C" - SECTION THRU EX. DITCH - DETAIL 5/C1.3
- AREA DRAIN - SEE DETAIL 2/C1.3 (SIMILAR, USE BEE HIVE CASTING) OR 6/C1.3



TC - TOP OF CURB
G - GUTTER
R - RIM
I.E. - INVERT ELEVATION



HERBERT, CHARLES R JR & NANCY P T / E
12201 OLD STATE RD
EVANSVILLE, IN 47725



HERBERT, CHARLES R & NANCY P T/E
25 E INGLEDEN RD
EVANSVILLE, IN 47711

LOT 4
15,263.66 SQ. FT.
0.350 ACRES

LOT 5
40,604.98 SQ. FT.
0.932 ACRES
F.F.E. = 439.55

DELTA 05°10'16"
R = 7,574.44'
L = 683.60'
CH = N 03°36'52" E
683.37'

HIGHWAY 41

Channels and Areas of Concentrated Flow

Seed Mixtures	Rate per Acre Pure Live Seed	Optimum Soil pH
1. Perennial ryegrass - white ¹	150 lbs. 2 lbs.	5.5 to 7.0
2. Kentucky bluegrass - smooth bromegrass - switchgrass - timothy - perennial ryegrass - white clover ²	20 lbs. 10 lbs. 3 lbs. 4 lbs. 10 lbs. 2 lbs.	5.5 to 7.5
3. Tall fescue ¹ - white clover ²	150 lbs. 2 lbs.	5.5 to 7.5
4. Tall fescue ² - perennial ryegrass - Kentucky bluegrass	150 lbs. 20 lbs. 20 lbs.	5.5 to 7.5

SITE GRADING
LOT 5 SHEFFER-CARSON
 12101 HIGHWAY 41 N
 VANDERBURGH COUNTY, INDIANA
ANDY EASLEY ENGINEERING
 CIVIL ENGINEERING (912) 424-2481
 EVANSVILLE, INDIANA 47710
 1133 WEST WILL ROAD

DRAWN BY: [blank]
 CHECKED: [blank]
 A.D.W.
 SCALE: AS NOTED
 DATE: 3-21-2020
 PROJECT NO.: 9084-A
 SHEET NO.: **C1.2**
 REVISIONS: [blank]

LAMM CREEDY LLC
19622 ELPERS RD
EVANSVILLE, IN 47725

Enan 5/26/2020