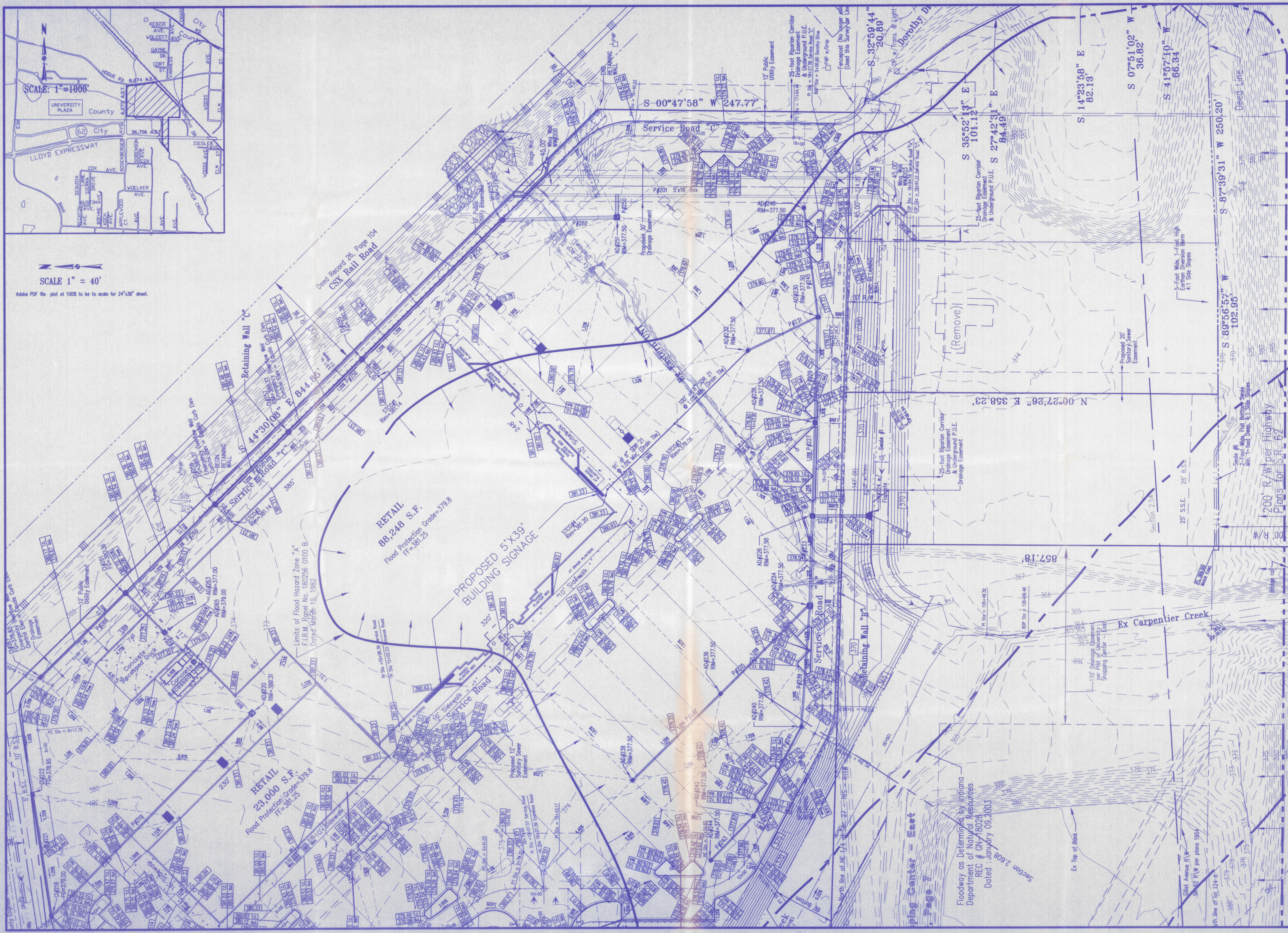


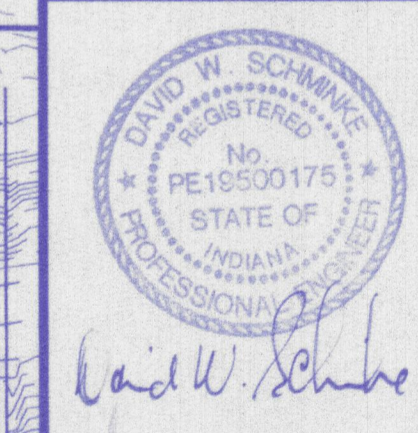
SCALE 1" = 40'
 Adobe PDF file plot at 100% to be scale for 24"x36" sheet.



Floodway as Determined by Indiana Department of Natural Resources
 REC # GN 18026
 Dated January 09, 2003

Morley and Associates, Inc.
 Consulting Engineers/Surveyors/Architects
 600 S.E. Sixth Street
 Evansville, Indiana, 47713
 (812) 464-9586

No.	By	Date	Description



Project: Carpentier Creek Pavillion
 Evansville, Indiana
 Sheet Title: Site Grading & "B" Drainage Plan
 Scale: 1" = 40'
 Designed by: JMK Job Number: 5429-4D
 Drawn by: JMK Date: 06/21/04
 Checked by: JMK Filename: 5429base.dwg
 Sheet Number: C-10