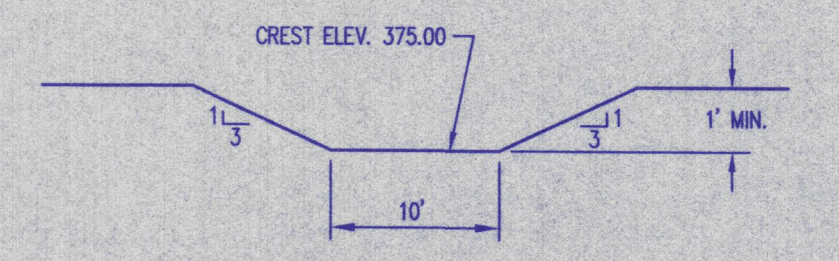
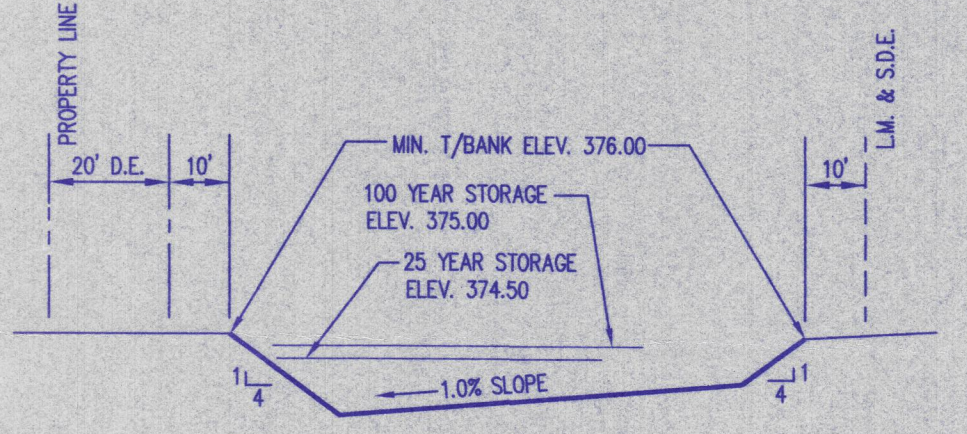
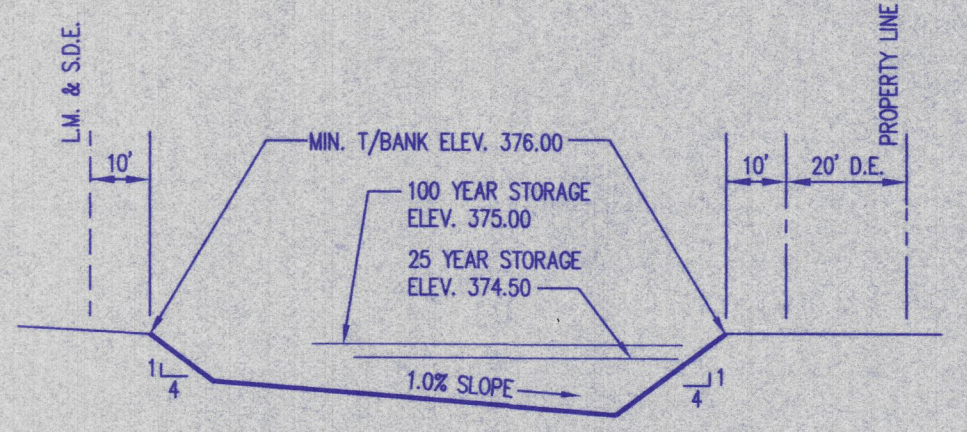
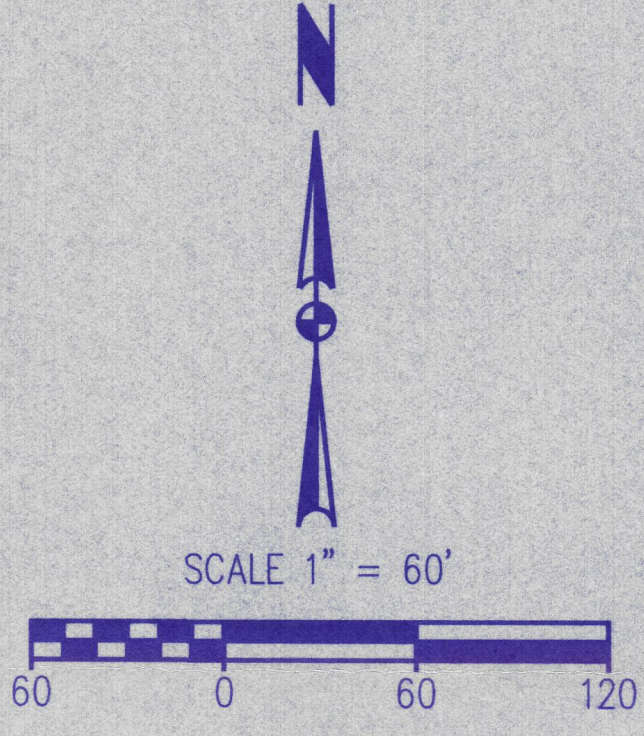
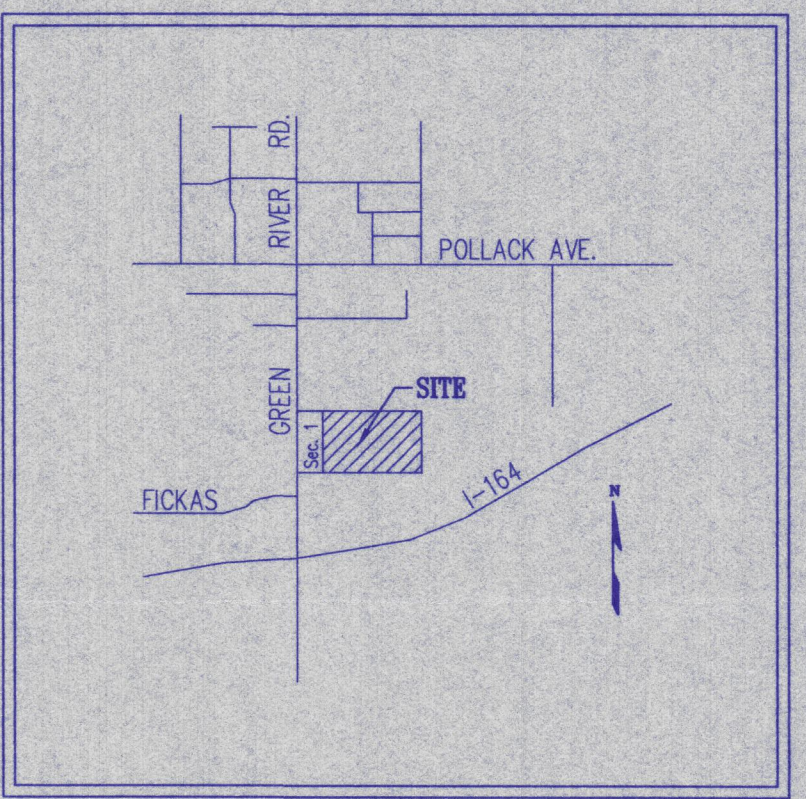


NOTE: DEVELOPER OF LOT 10 SHALL BE RESPONSIBLE FOR CAPTURING STORM WATER RUNOFF FROM SAID LOT AND CONVEYING IT TO THE DETENTION BASIN PROVIDED. ALL DRAINAGE STRUCTURES UTILIZED ON SITE (I.E. STORM SEWERS, GRASSED OR PAVED SWALES, ETC.) SHALL BE DESIGNED IN ACCORDANCE WITH THE CURRENT VANDERBURGH COUNTY DRAINAGE ORDINANCE

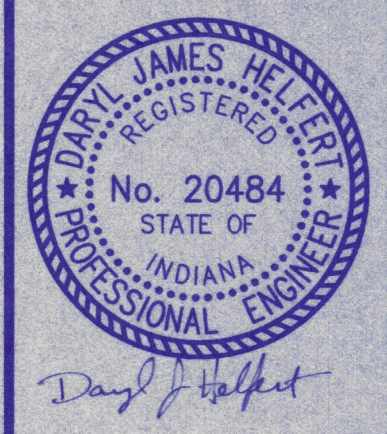


**Morley and Associates, Inc.**  
Consulting Engineers/Surveyors/Architects  
600 S.E. 8th Street  
Evansville, Indiana 47713  
(812) 464-9565

All ideas, designs, calculations, and arrangements indicated or represented by this drawing are owned by and the property of Morley and Associates, Inc. and were created for the use on and in connection with the specified project. None of such ideas, designs, calculations, or arrangements shall be used, copied, or reproduced in any way, in whole or in part, for any purpose whatsoever without the written permission of Morley and Associates, Inc.

Written dimensions on these drawings shall have precedence over all dimensions and conditions on the job and Morley and Associates, Inc. must be notified of any variations from the dimensions and conditions shown by these drawings.

No.	By	Date	Description



Project: Carnel Commercial - Section 2  
Sheet Title: Drainage Plan  
Scale: 1"=60'  
Designed By: D.J.H. Job Number: 1961-4  
Drawn By: G.A.H. Date: 11/10/97  
Checked By: D.J.H. Filename: 1961SEC2.DWG  
Sheet Number: 1 of 1