

Tax Code 2-117-5  
Clem A. Frank  
5000 Heckel Road  
Evansville, IN 47711  
(D.D.R. 3, CD. 9463)

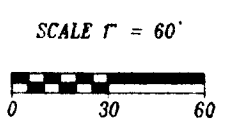
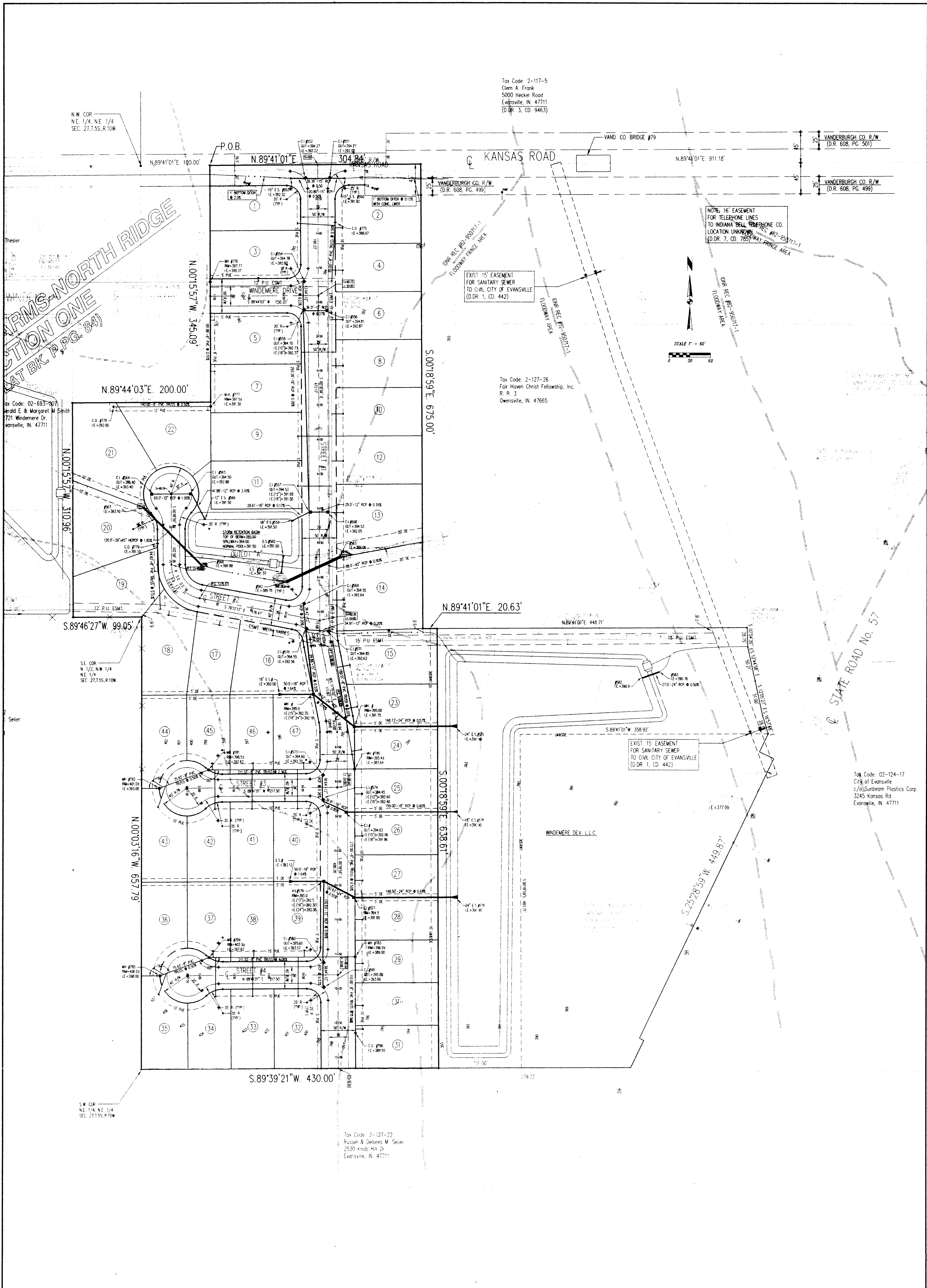
N.W. COR.  
NE 1/4, NE 1/4  
SEC. 27, T.5S, R.10W

**CAMDEN FARMS NORTH RIDGE**  
**SECTION ONE**  
**AT BK. P.G. 84)**

Tax Code: 02-693-007  
Gerald E. & Margaret M. Smith  
721 Windemere Dr.  
Evansville, IN 47711

Tax Code: 2-127-26  
Fair Haven Christ Fellowship, Inc.  
R. R. 3  
Owensville, IN 47665

Tax Code: 02-124-17  
City of Evansville  
c/o Sunbeam Plastics Corp.  
3245 Kansas Rd.  
Evansville, IN 47711



Sheet Number  
**DR-1**

Scale 1" = 60'

|             |            |
|-------------|------------|
| Designed By | CHK Number |
| Drawn By    | 1-98-40    |
| RRB         | 10-26-98   |
| Checked By  | Final      |
| SUBPLAT     |            |

| Revisions |    |      |             |  |
|-----------|----|------|-------------|--|
| No        | By | Date | Description |  |
| ▲         |    |      |             |  |
| ▲         |    |      |             |  |
| ▲         |    |      |             |  |
| ▲         |    |      |             |  |

Project: **CAMDEN FARMS**

Sheet Title: **FINAL DRAINAGE PLAN**

**SITECON, Inc.**  
Engineers-Surveyors  
10335 Hedden Rd. Suite 2  
Evansville, Indiana 47711  
(812) 868-0877

Written dimensions on these drawings shall have precedence over scale dimensions. Contractors shall verify and be responsible for all dimensions and conditions on the job and SITECON, Inc. must be notified of any variations from the dimensions and conditions shown by these drawings.

8/24/98  
11