

340' From east property line to centerline of Burkhardt Road

Wedeking Avenue

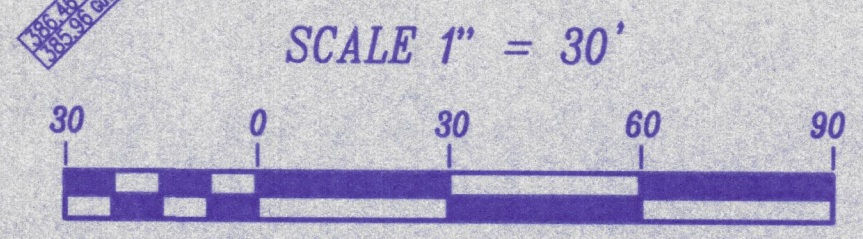
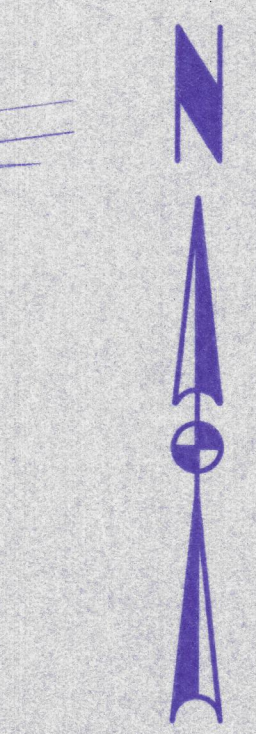
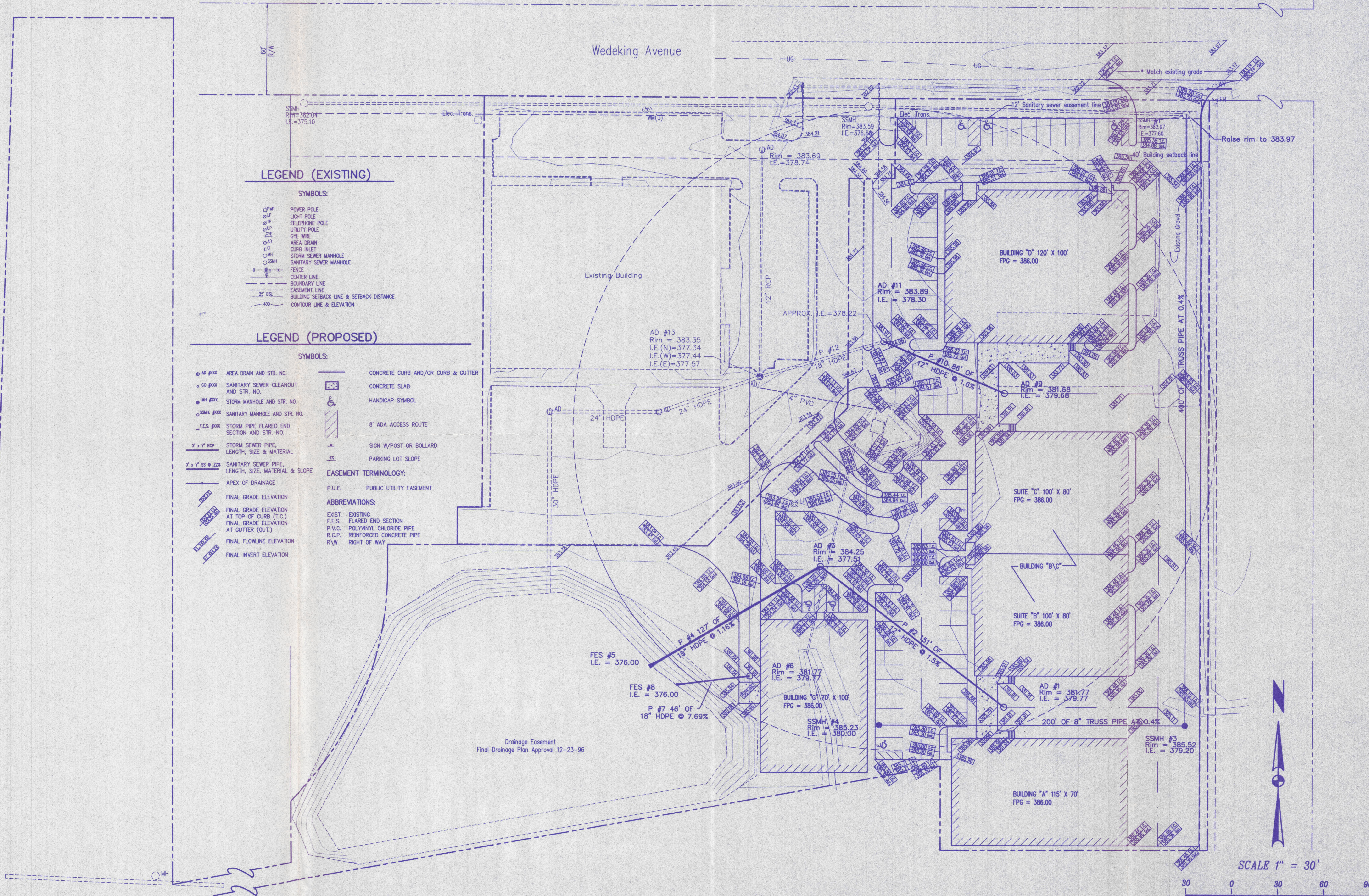
Burkhardt Road

LEGEND (EXISTING)

- SYMBOLS:
- ⊕ PWP POWER POLE
 - ⊕ LP LIGHT POLE
 - ⊕ TP TELEPHONE POLE
 - ⊕ UP UTILITY POLE
 - ⊕ WRE GYE WIRE
 - ⊕ AD AREA DRAIN
 - ⊕ CI CURB INLET
 - ⊕ MH STORM SEWER MANHOLE
 - ⊕ SSMH SANITARY SEWER MANHOLE
 - ⊕ FENCE
 - CENTER LINE
 - BOUNDARY LINE
 - EASEMENT LINE
 - BUILDING SETBACK LINE & SETBACK DISTANCE
 - CONTOUR LINE & ELEVATION

LEGEND (PROPOSED)

- SYMBOLS:
- ⊕ AD #XXX AREA DRAIN AND STR. NO.
 - ⊕ CO #XXX SANITARY SEWER CLEANOUT AND STR. NO.
 - ⊕ MH #XXX STORM MANHOLE AND STR. NO.
 - ⊕ SSMH #XXX SANITARY MANHOLE AND STR. NO.
 - ⊕ F.E.S. #XXX STORM PIPE FLARED END SECTION AND STR. NO.
 - X' x Y' RCP STORM SEWER PIPE, LENGTH, SIZE & MATERIAL
 - X' x Y' SS @ ZZZ SANITARY SEWER PIPE, LENGTH, SIZE, MATERIAL & SLOPE
 - APEX OF DRAINAGE
 - Final Grade Elevation
 - Final Grade Elevation at Top of Curb (T.C.)
 - Final Grade Elevation at Gutter (GUT.)
 - Final Flowline Elevation
 - Final Invert Elevation
- CONCRETE CURB AND/OR CURB & GUTTER
- CONCRETE SLAB
- HANDICAP SYMBOL
- 8' ADA ACCESS ROUTE
- SIGN W/POST OR BOLLARD
- PARKING LOT SLOPE
- EASEMENT TERMINOLOGY:
- P.U.E. PUBLIC UTILITY EASEMENT
- ABBREVIATIONS:
- EXIST. EXISTING
- F.E.S. FLARED END SECTION
- P.V.C. POLYVINYL CHLORIDE PIPE
- R.C.P. REINFORCED CONCRETE PIPE
- R/W RIGHT OF WAY



Morley and Associates, INC.
 Consulting Engineers/Surveyors/Architects
 605 S.E. Martin Luther King Jr. Blvd.
 Evansville, Indiana 47713
 (812) 464-9595

All ideas, designs, calculations, and arrangements indicated or implied by this drawing are the property of Morley and Associates, Inc. and were created for the use on and in connection with the specified project. None of such ideas, designs, calculations, or arrangements shall be used by or disclosed to any other party without the written permission of Morley and Associates, Inc. All dimensions on these drawings shall have precedence over any dimensions on any other drawings. Contractors shall verify and be responsible for the accuracy of all dimensions and conditions shown by these drawings.

| No. | By | Date | Description |
|-----|----|------|-------------|
| | | | |
| | | | |
| | | | |
| | | | |



James Q. Morley

Project: Burkhardt Square Industrial Park
 Sheet Title: Grading Plan
 Scale: 1" = 30'
 Designed By: J.E.M. Job Number: 97-286-4E
 Drawn By: J.E.M. Date: 10/27/97
 Checked By: File Name: 286BASE.DWG
 Sheet Number: 2 of 3