

340' From east property line to centerline of Burkhardt Road

Wedeking Avenue

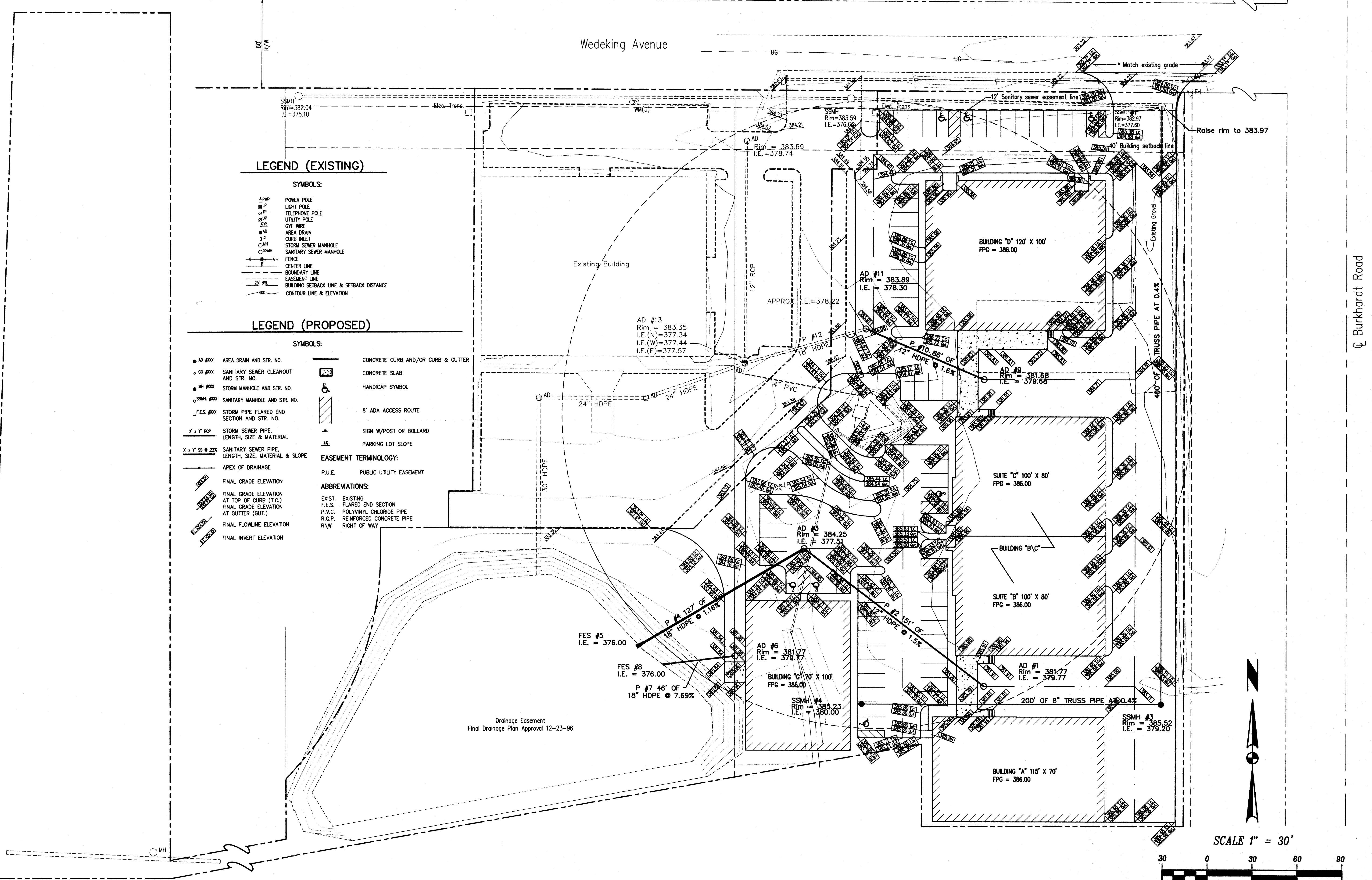
Burkhardt Road

### LEGEND (EXISTING)

- SYMBOLS:**
- ⊕ POWER POLE
  - ⊙ LIGHT POLE
  - ⊙ TELEPHONE POLE
  - ⊙ UTILITY POLE
  - ⊙ GYE WIRE
  - ⊙ AREA DRAIN
  - ⊙ CURB INLET
  - ⊙ STORM SEWER MANHOLE
  - ⊙ SANITARY SEWER MANHOLE
  - ⊙ FENCE
  - ⊙ CENTER LINE
  - ⊙ BOUNDARY LINE
  - ⊙ EASEMENT LINE
  - ⊙ BUILDING SETBACK LINE & SETBACK DISTANCE
  - ⊙ CONTOUR LINE & ELEVATION

### LEGEND (PROPOSED)

- SYMBOLS:**
- ⊙ AREA DRAIN AND STR. NO.
  - ⊙ SANITARY SEWER CLEANOUT AND STR. NO.
  - ⊙ STORM MANHOLE AND STR. NO.
  - ⊙ SANITARY MANHOLE AND STR. NO.
  - ⊙ STORM PIPE FLARED END SECTION AND STR. NO.
  - X x Y ROP STORM SEWER PIPE, LENGTH, SIZE & MATERIAL
  - X x Y SS @ ZZZ SANITARY SEWER PIPE, LENGTH, SIZE, MATERIAL & SLOPE
  - APEX OF DRAINAGE
  - FINAL GRADE ELEVATION
  - EXIST. FINAL GRADE ELEVATION AT TOP OF CURB (T.C.)
  - FINAL GRADE ELEVATION AT GUTTER (GUT.)
  - FINAL FLOWLINE ELEVATION
  - FINAL INVERT ELEVATION
  - CONCRETE CURB AND/OR CURB & GUTTER
  - CONCRETE SLAB
  - HANDICAP SYMBOL
  - 8' ADA ACCESS ROUTE
  - SIGN W/POST OR BOLLARD
  - PARKING LOT SLOPE
- EASEMENT TERMINOLOGY:**
- P.U.E. PUBLIC UTILITY EASEMENT
- ABBREVIATIONS:**
- EXIST. EXISTING
  - F.E.S. FLARED END SECTION
  - P.V.C. POLYVINYL CHLORIDE PIPE
  - R.C.P. REINFORCED CONCRETE PIPE
  - R/W RIGHT OF WAY



**Morley and Associates, Inc.**  
 Consulting Engineers/Surveyors/Architects  
 605 S.E. Martin Luther King Jr. Blvd.  
 Evansville, Indiana 47713  
 (812) 464-9565

All ideas, designs, calculations, and arrangements indicated or represented by this drawing are owned by and the property of Morley and Associates, Inc. and were created for the use on and in connection with the specified project. None of such ideas, designs, calculations, or arrangements shall be used by or disclosed to any other person or organization for any other project without the written permission of Morley and Associates, Inc. Written dimensions on these drawings shall have precedence over any other dimensions shown on the drawings. The engineer and architect shall be notified of any variations from the dimensions and conditions shown by these drawings.

No.	By	Date	Description



James Q. Morley

Project: Burkhardt Square Industrial Park  
 Sheet Title: Grading Plan

Scale: 1" = 30'  
 Designed By: J.E.M. Job Number: 97-286-4E  
 Drawn By: J.E.M. Date: 10/27/97  
 Checked By: J.E.M. Filename: 286BASE.DWG  
 Sheet Number: 2