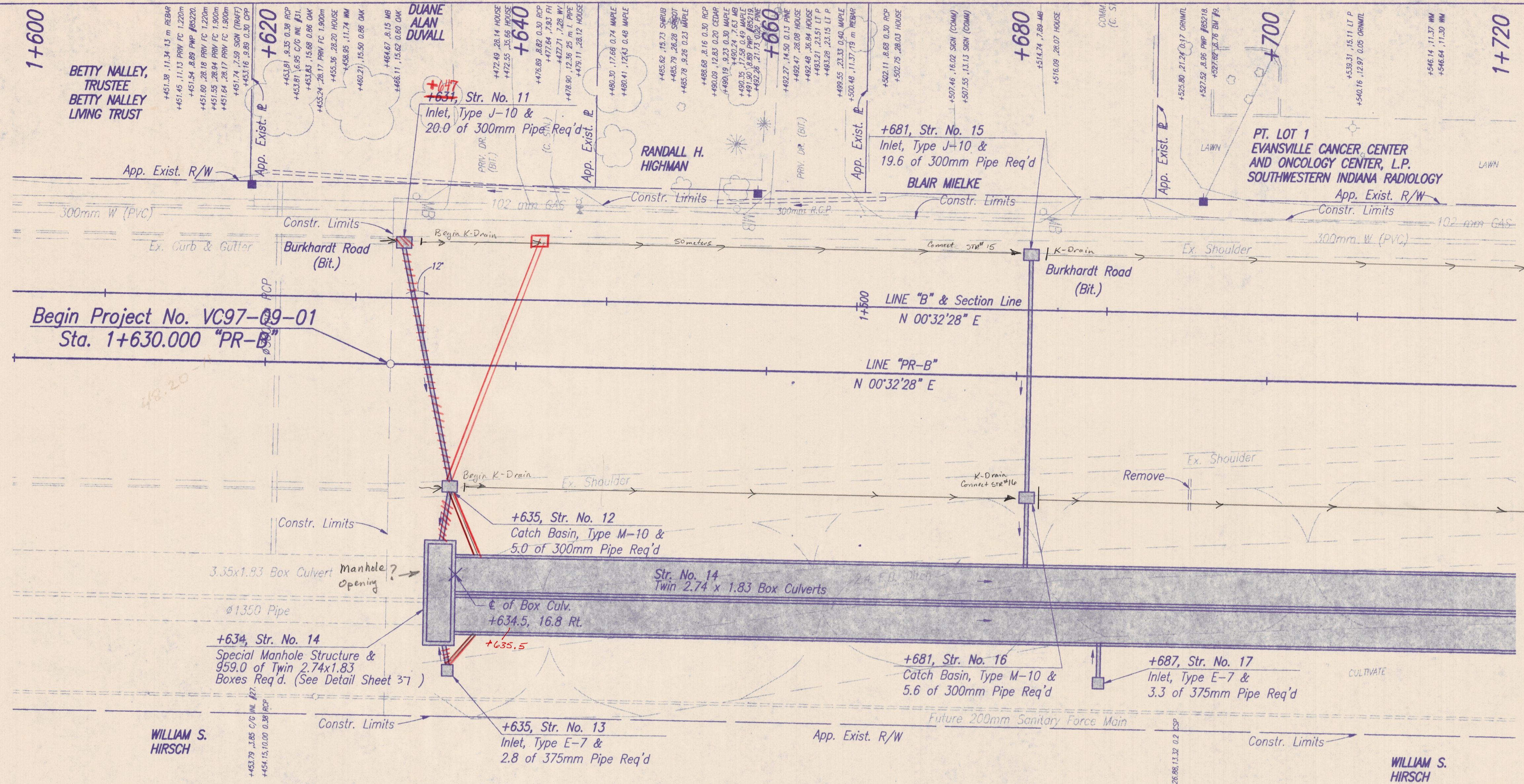
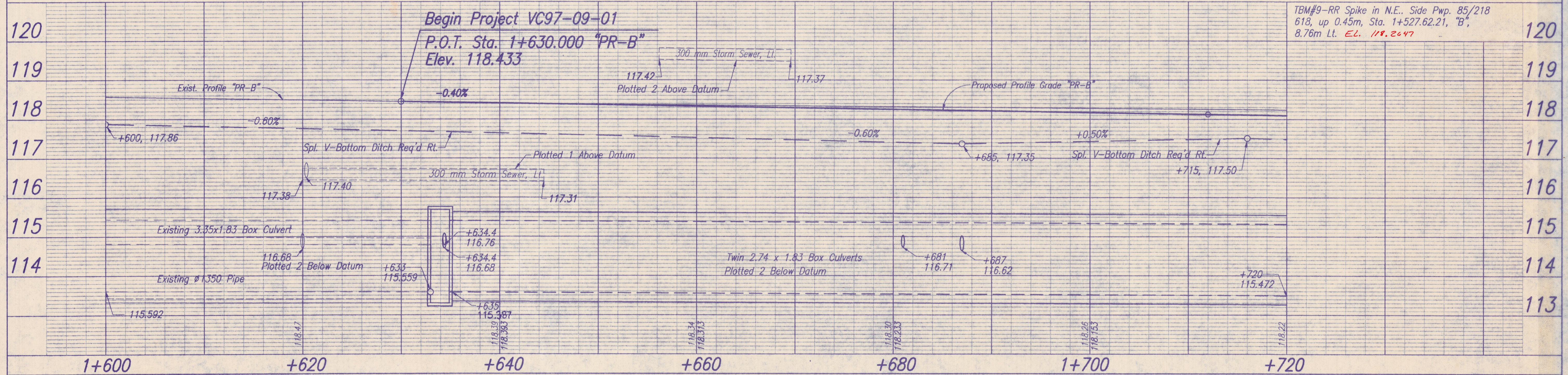


P:\jobs\96403\dwg\PP\CENTRAL\PP09C 9-17-97 8:12:00 am EST



All topo taken from Line "B" unless otherwise noted.
 All R/W taken from Line "PR-B" unless otherwise noted.
 All R/W on this sheet to be as shown.



TBM#9-RR Spike in N.E. Side Pwp. 85/218
 618, up 0.45m, Sta. 1+527.62, 21, "B",
 8.76m Lt. *EL. 118.2647*

		RECOMMENDED FOR APPROVAL <i>Kent D. Downey</i> 9/19/97 DESIGN ENGINEER DATE	INDIANA DEPARTMENT OF TRANSPORTATION	HORIZONTAL SCALE 1:200 BRIDGE FILE VERTICAL SCALE 1:50 DESIGNATION
P.I. 1+235.420 "B" = APPARENT 1/4 COR.	DESIGNED: <i>ATW, DAV</i> CHECKED: <i>GLR</i>	DRAWN: <i>ATW, DAV, JRF</i> CHECKED: <i>GLR</i>	PLAN & PROFILE BURKHARDT ROAD	SURVEY BOOK CONTRACT SHEETS 5 of 90 PROJECT VC97-09-01