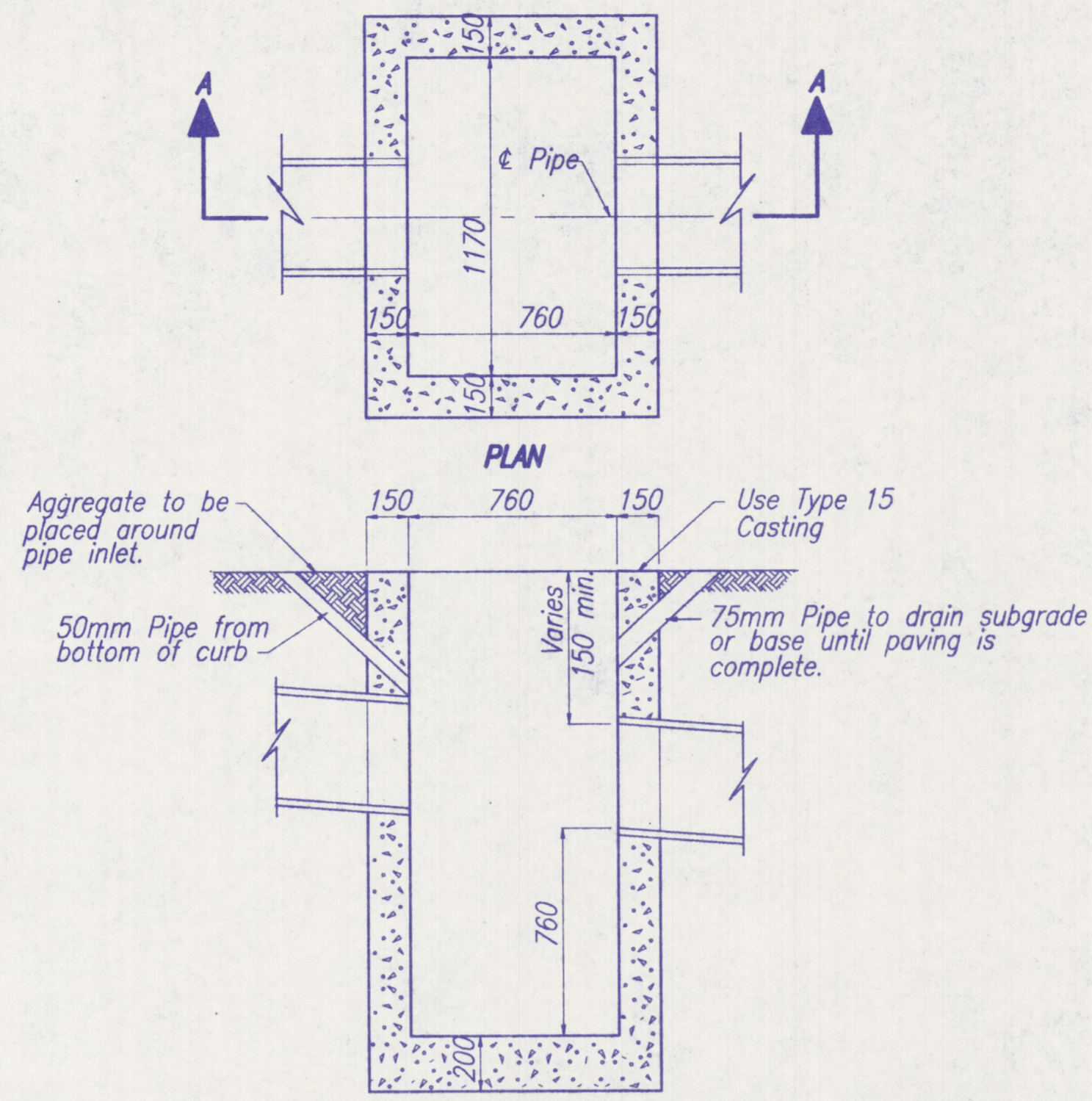


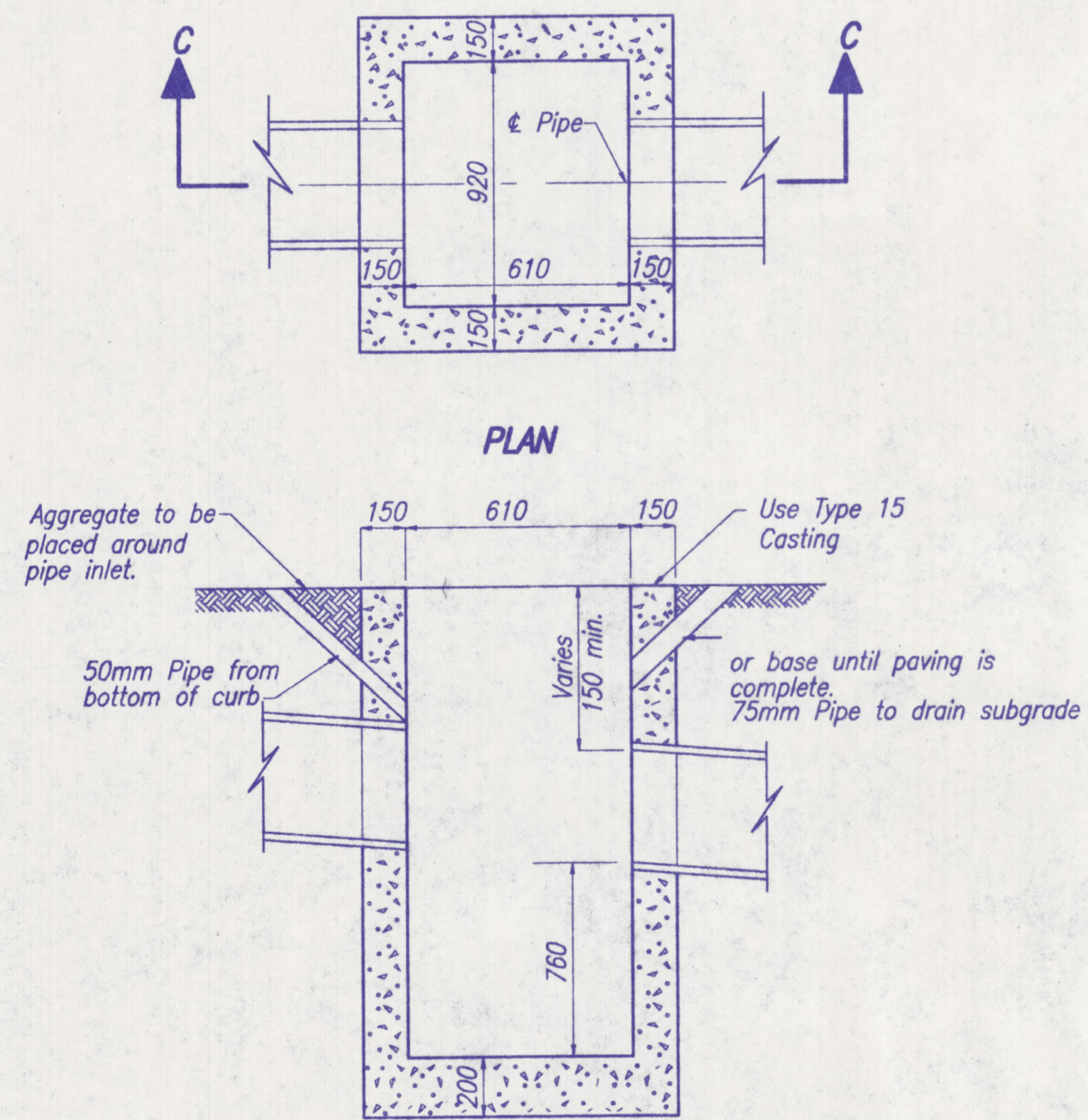
SECTION "A-A"
CATCH BASIN TYPE "B"

SCALE: 1:200



SECTION "A-A"
CATCH BASIN TYPE "C"

SCALE: 1:200

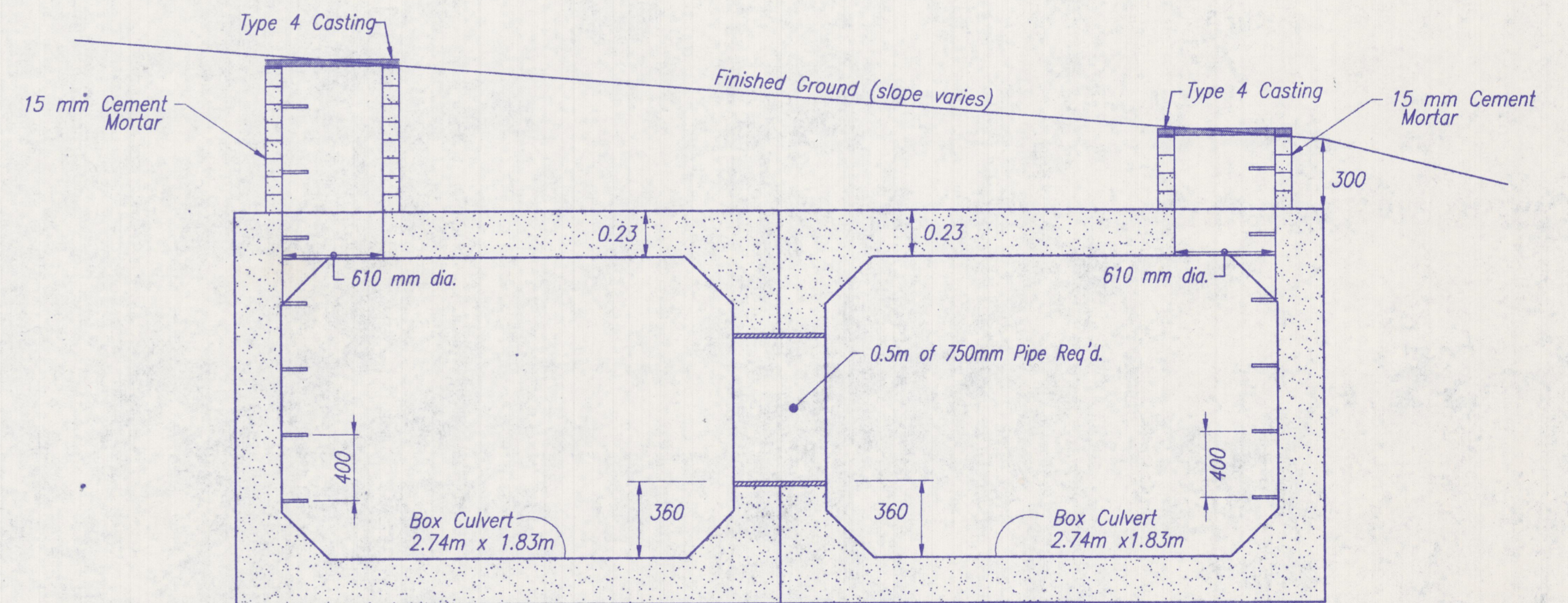


SECTION "C-C"
CATCH BASIN TYPE "M"

SCALE: 1:200

GENERAL NOTES

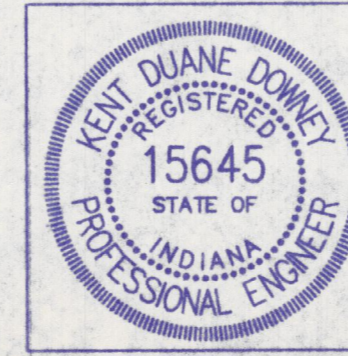
- ① Cast-in-place or precast inlets and catch basins shall be constructed and installed in accordance with the Standard Specifications.
- ② When pipe is field connected directly to a precast unit, the unit shall include a field poured Class "A" Concrete collar of a 150mm minimum longitudinal and radial thickness.
- ③ Casting Type 15 is detailed on Standards Sheet 720-ICCA-16 & 720-ICCA-17.
- ④ Waterproofing material shall conform to AASHTO, M115 and the Standard Specifications.
- ⑤ All dimension are in mm unless otherwise noted.



MANHOLE ACCESS DETAIL

N.T.S.

86403 (08/27/15) 1-107-21-87



RECOMMENDED FOR APPROVAL	<i>Kent Duane Downey</i>	DATE: 9/19/17
DESIGNED: ATW	DRAWN: JRF	
CHECKED: GLR	CHECKED: GLR	

INDIANA
DEPARTMENT OF TRANSPORTATION

MISC. DETAILS
BURKHARDT ROAD

HORIZONTAL SCALE	BRIDGE FILE
1:200	
VERTICAL SCALE	DESIGNATION
SURVEY BOOK	SHEETS
	26 of 90
CONTRACT	PROJECT
	KC97-09-01