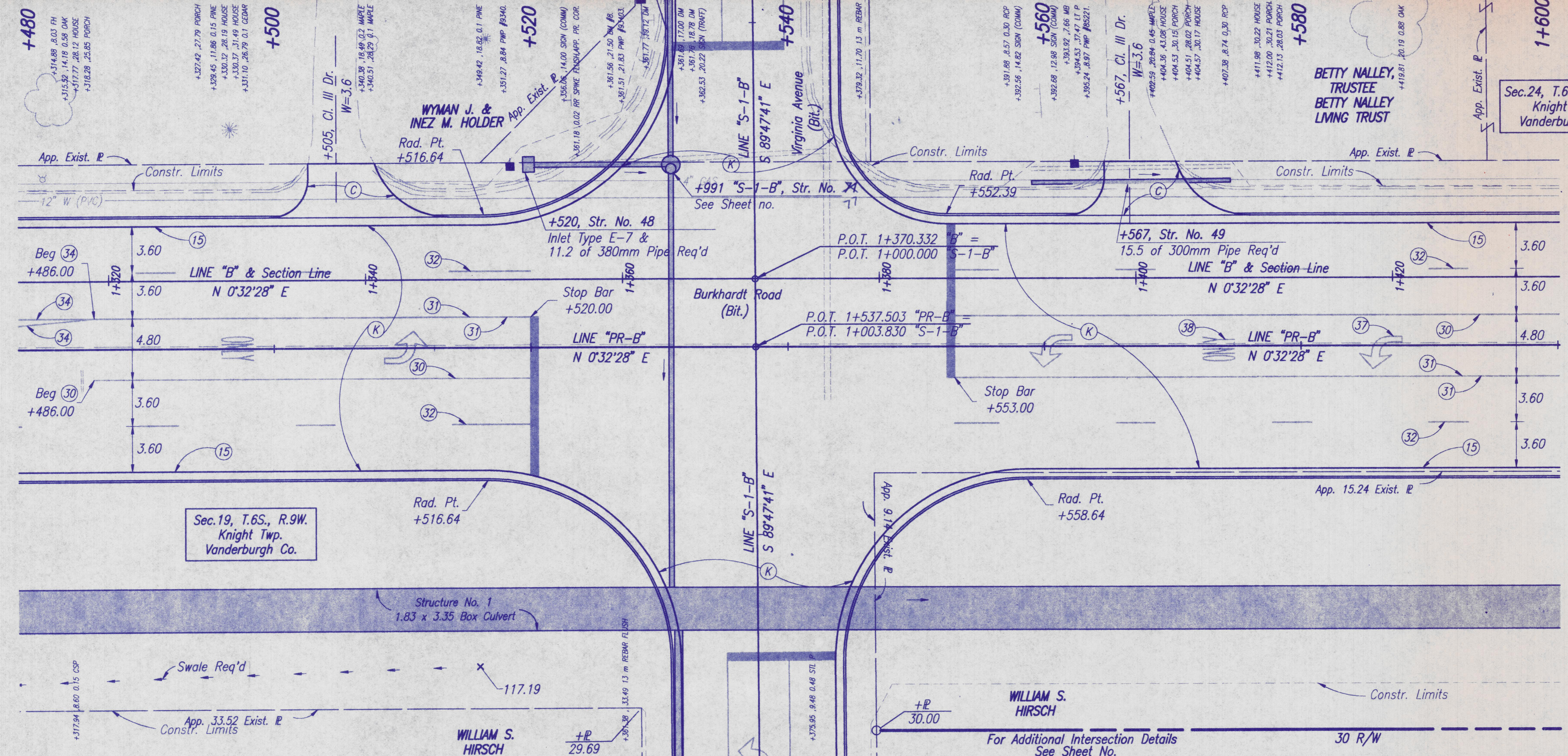
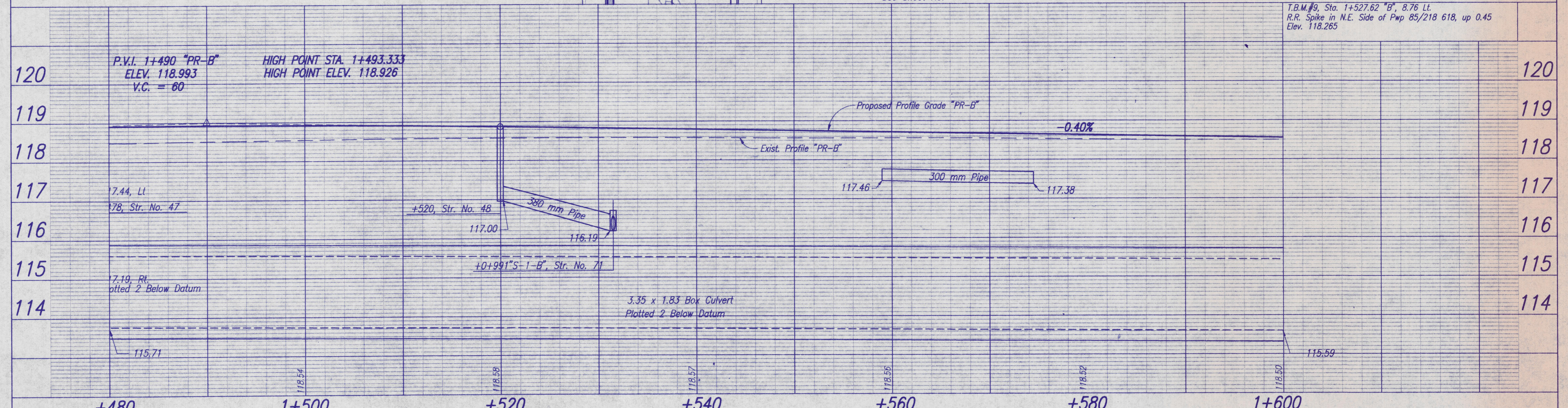


P:\96403\DWG\PP8 7-26-96 5:30:25 pm EST



- ### LEGEND
- (C) 0.20 Concrete Pavement for Drives
 - (K) Full Depth Bituminous Pavement
60 kg/m² Surface 11, HV on
150 kg/m² Binder 8, HV on
270 kg/m² Base 5, HV on
248 kg/m² Base 5C, HV on
270 kg/m² Base 5D, HV
 - (15) Combined Curb and Gutter, Barrier
 - (26) Sodding
 - (30) Line, Thermoplastic, Solid, White, 100mm
 - (31) Line, Thermoplastic, Solid, Yellow, 100mm
 - (32) Line, Thermoplastic, Skip, White, 100mm
 - (34) Line, Thermoplastic, Solid, Yellow, 200mm
 - (35) Line, Thermoplastic, Solid, White, 600mm
 - (37) PMM, Thermoplastic, Lane Indication Arrow
 - (38) PMM, Thermoplastic, Word (ONLY)

All topo taken from Line "B" unless otherwise noted.
All R/W taken from Line "PR-B" unless otherwise noted.
All R/W on this sheet to be as shown.



T.B.M. #9, Sta. 1+527.62 "B", 8.76 Lt.
R.R. Spike in N.E. Side of Pwp 85/218 618, up 0.45
Elev. 118.265

	+480	+500	+520	+540	+560	+580	+600	
	INDIANA DEPARTMENT OF TRANSPORTATION				PLAN & PROFILE BURKHARDT ROAD			
	RECOMMENDED FOR APPROVAL				DESIGN ENGINEER DATE			
	DESIGNED: <u>ATW,DAV</u>		DRAWN: <u>ATW,DAV,JLF</u>		SURVEY BOOK SHEETS			
	CHECKED: <u>DAS</u>		CHECKED: <u>DAS</u>		CONTRACT PROJECT			
					24 of 100			
					VC96-08-01			