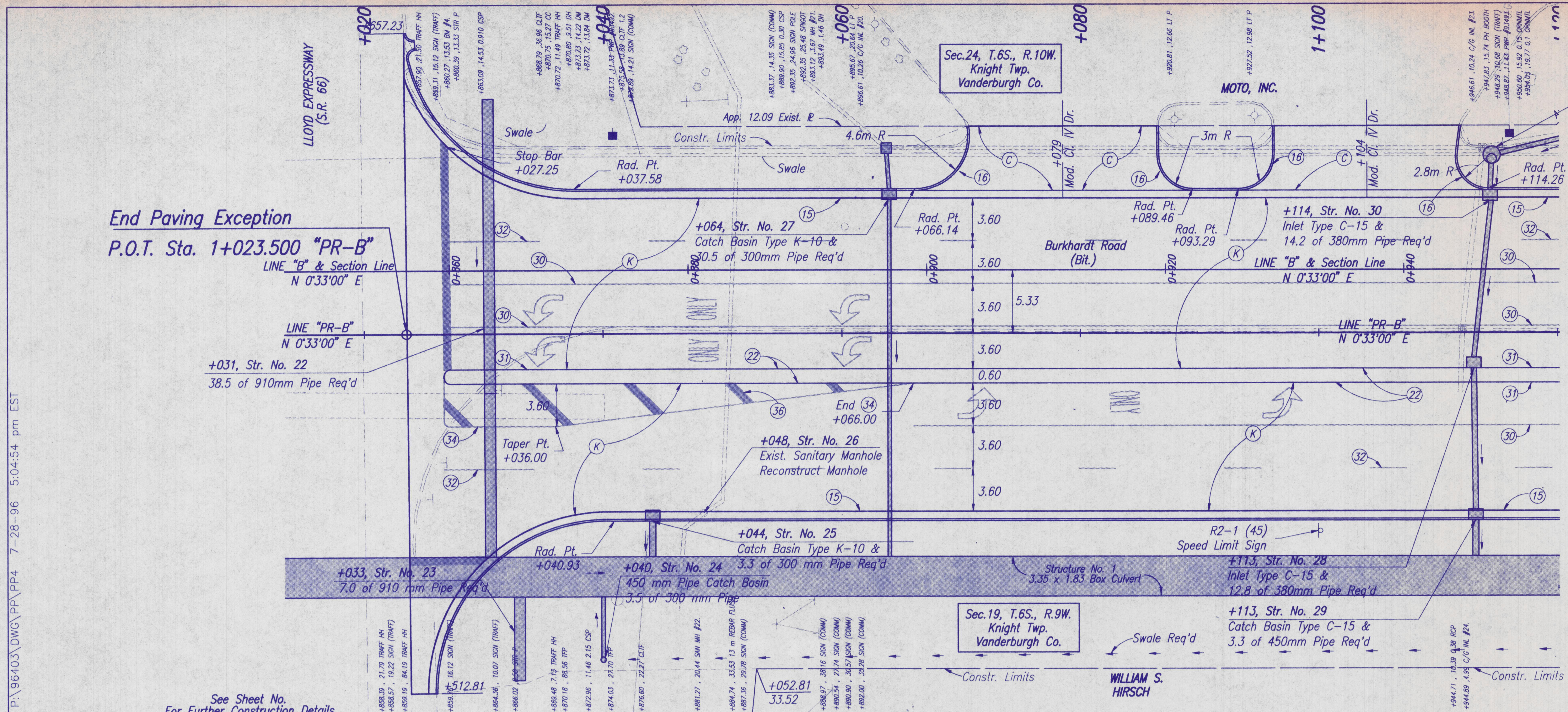


P:\96403\DWG\PP\PP4 7-28-96 5:04:54 pm EST



**End Paving Exception**  
**P.O.T. Sta. 1+023.500 "PR-B"**  
 LINE "B" & Section Line  
 N 0°33'00" E  
 LINE "PR-B"  
 N 0°33'00" E  
 +031, Str. No. 22  
 38.5 of 910mm Pipe Req'd

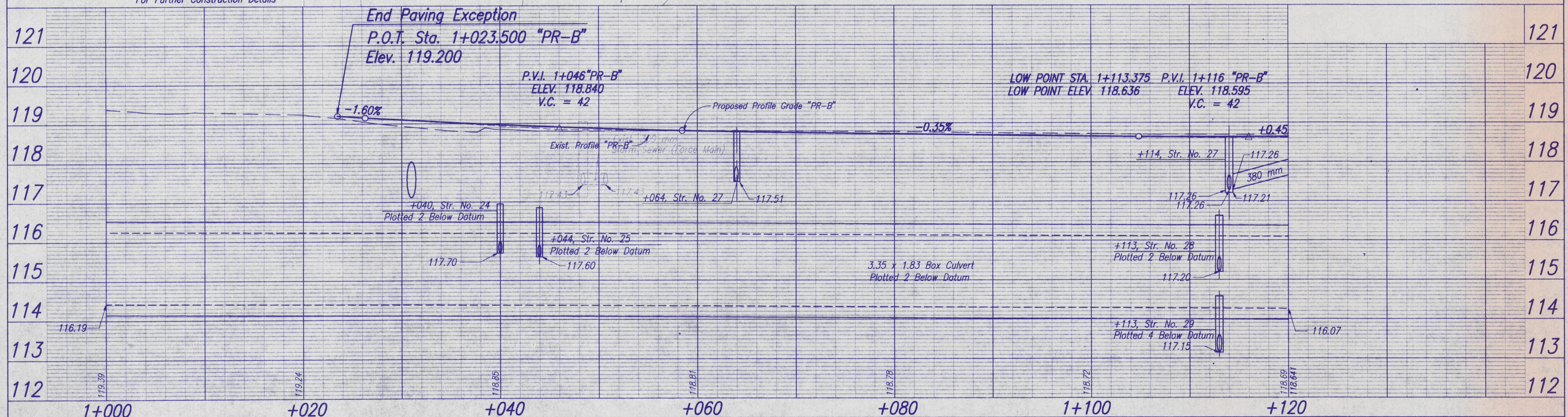
See Sheet No.  
 For Further Construction Details

+114, Str. No. 30A  
 Manhole Type C-4 &  
 3.1 of 380mm Pipe Req'd

**LEGEND**

- (C) 0.20 Concrete Pavement for Drives
- (K) Full Depth Bituminous Pavement  
 60 kg/m<sup>2</sup> Surface 11, HV on  
 150 kg/m<sup>2</sup> Binder 8, HV on  
 270 kg/m<sup>2</sup> Base 5, HV on  
 248 kg/m<sup>2</sup> Base 5C, HV on  
 270 kg/m<sup>2</sup> Base 5D, HV
- (15) Combined Curb and Gutter, Barrier
- (16) Curb, Barrier
- (22) Center Curb, Type D
- (30) Line, Thermoplastic, Solid, White, 100mm
- (31) Line, Thermoplastic, Solid, Yellow, 100mm
- (32) Line, Thermoplastic, Skip, White, 100mm
- (33) Line, Thermoplastic, Skip, Yellow, 100mm
- (34) Line, Thermoplastic, Solid, Yellow, 200mm
- (36) Line, Thermoplastic, Solid, Yellow, 600mm

All topo taken from Line "B" unless  
 otherwise noted.  
 All R/W taken from Line "PR-B" unless  
 otherwise noted.  
 All R/W on this sheet to be as shown.



RECOMMENDED FOR APPROVAL		INDIANA DEPARTMENT OF TRANSPORTATION	HORIZONTAL SCALE	BRIDGE FILE
DESIGN ENGINEER DATE			1:200	DESIGNATION
DESIGNED: ATW, DAV	DRAWN: ATW, DAV, JLF	PLAN & PROFILE BURKHARDT ROAD	VERTICAL SCALE	SURVEY BOOK
CHECKED: DAS	CHECKED: DAS		1:50	SHEETS
			CONTRACT	PROJECT
			20 of 100	
			VC96-08-01	