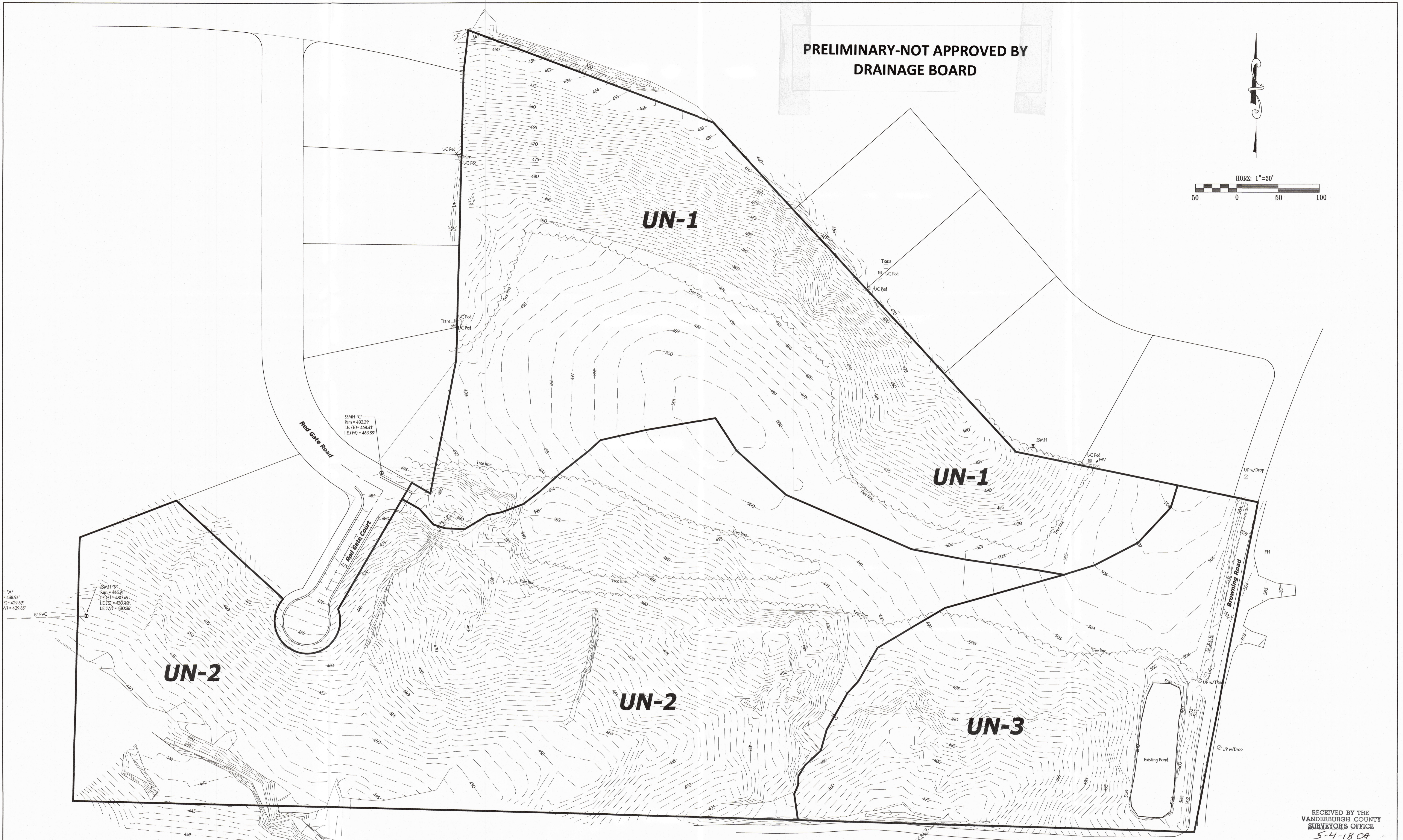
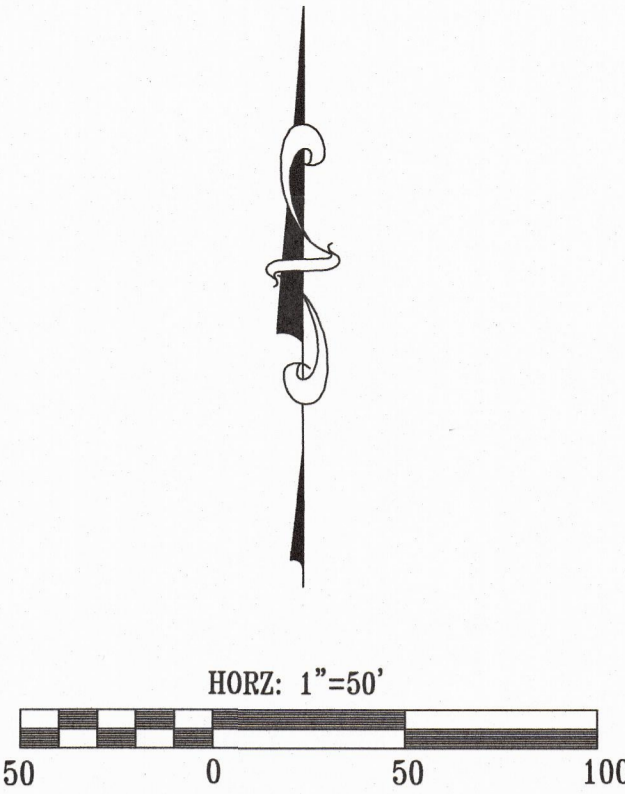


PRELIMINARY-NOT APPROVED BY  
DRAINAGE BOARD



1"=40'  
E(1)=429.69'  
V(1)=429.65'

SSMH "9"  
Rim = 445.91'  
I.E.(S) = 450.49'  
I.E.(E) = 450.78'  
I.E.(W) = 450.56'

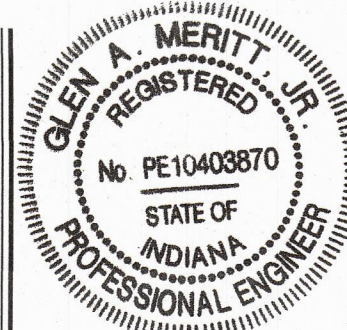
SSMH "C"  
Rim = 482.51'  
I.E.(E) = 468.41'  
I.E.(W) = 468.35'

RECEIVED BY THE  
VANDERBURGH COUNTY  
SURVEYOR'S OFFICE  
5-4-18 CA

This drawing and/or specifications is provided as an instrument of service provided by Cash Wagner & Associates, PC and is intended for use on this project only. All drawings, specifications, designs, models, ideas, calculations, and arrangements appearing herein constitutes the original and unaltered work of and remains the property of Cash Wagner & Associates, PC. Any reproduction, use or disclosure of the proprietary information contained herein without the prior written consent of the Cash Wagner & Associates, PC is strictly prohibited.

Written dimensions shown herein shall take precedence over scaled dimensions. Contractors shall calculate and measure required dimensions. Notify Cash Wagner & Associates, PC with any variations in dimensions or conditions from those indicated on these drawings. This drawing was based on available information. Commencement of Work constitutes verification and acceptance of existing conditions.

Application of a material or equipment to Work installed by others constitutes acceptance of that Work and assumption of responsibility for satisfactory installation.



*Glen A. Meritt, Jr.*  
SIGNATURE

30 April 18  
DATE



**CASH WAGGNER  
& ASSOCIATES, PC**  
CONSULTING | ENGINEERING | SURVEYING

414 CITADEL CIRCLE  
SUITE B  
EVANSVILLE, IN 47715  
PH: 812.401.5561  
FAX: 812.401.5563  
CELL: 812.774.2988  
E-MAIL: GMERITT@CASHWAGGNER.COM

NO.	DATE	BY	DESCRIPTION

PROJECT NO.: 18-3294  
DESIGNED BY: G.A.M.  
DRAWN BY: A.W.W.  
FILENAME: 3294 BASE  
LAYOUT TAB: UNDEV  
SCALE: As Shown

PROJECT: **BROWNING MANOR**  
**BROWNING ROAD**  
**EVANSVILLE, INDIANA**

SHEET TITLE: **UNDEVELOPED  
SUB-BASINS**

DATE: **04.30.18**

DRAWING NO.: **1**

OF: 2