

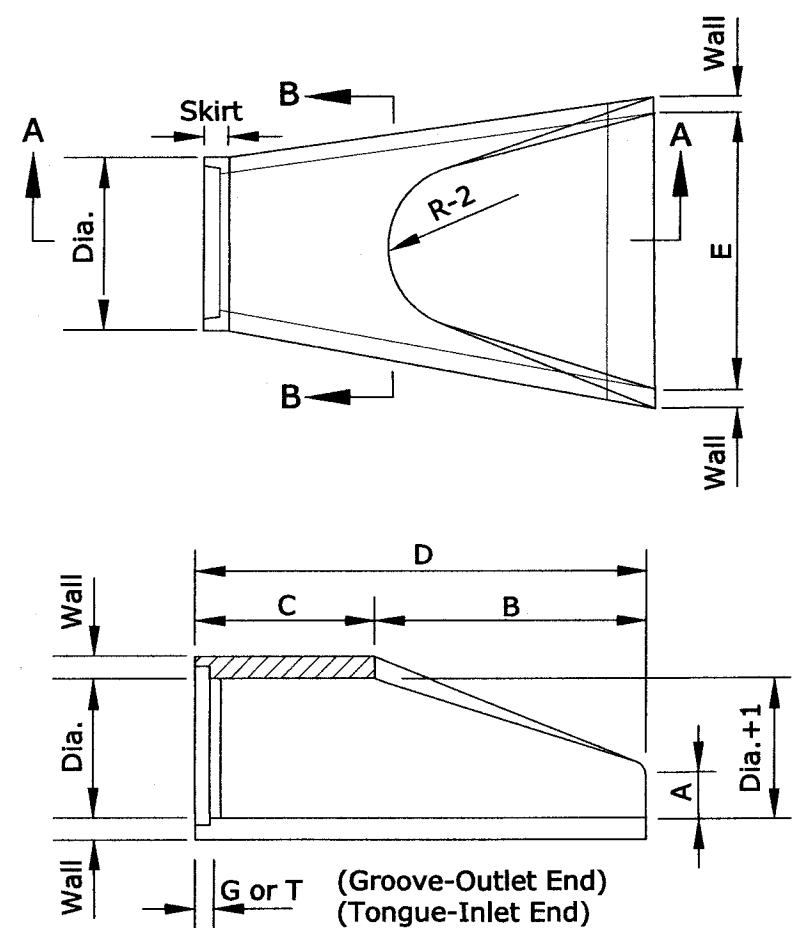
TRENCH WIDTH TABLE

PIPE Ø	MIN WIDTH
12"	2'-6"
15"	2'-9"
18"	3'-0"
24"	3'-6"
30"	4'-1 1/2"
36"	4'-9"
42"	5'-4 1/2"

- Notes:**
1. New street surface shall comply with local authority jurisdiction.

REINFORCED CONCRETE PIPE BEDDING

Scale: N.T.S.



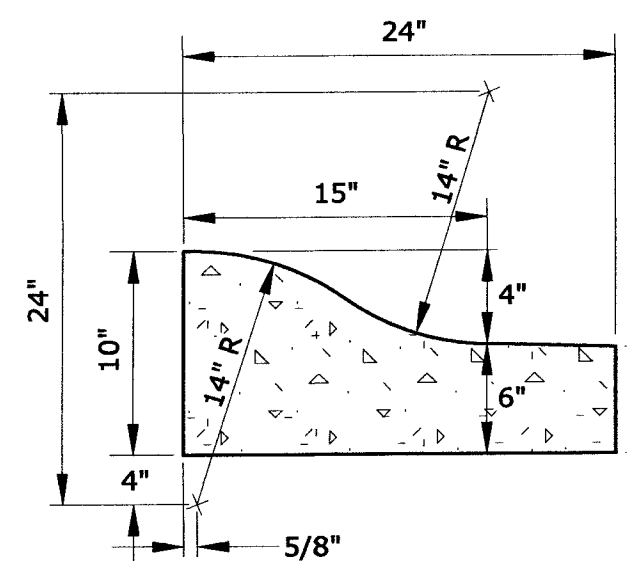
SECTION A-A

SECTION B-B

DIA.	WALL	G or T	WT. SEC.	A	B	C	D	E	DIA.+1	R-1	R-2	SKIRT
12	2	1 1/2	530	4	24	48 7/8	72 7/8	24	13	10 1/16	9	3 1/2
15	2 1/4	2	740	6	27	46	73	30	16	12 1/2	11	3 1/2

Manufacture of end section is in accordance with applicable

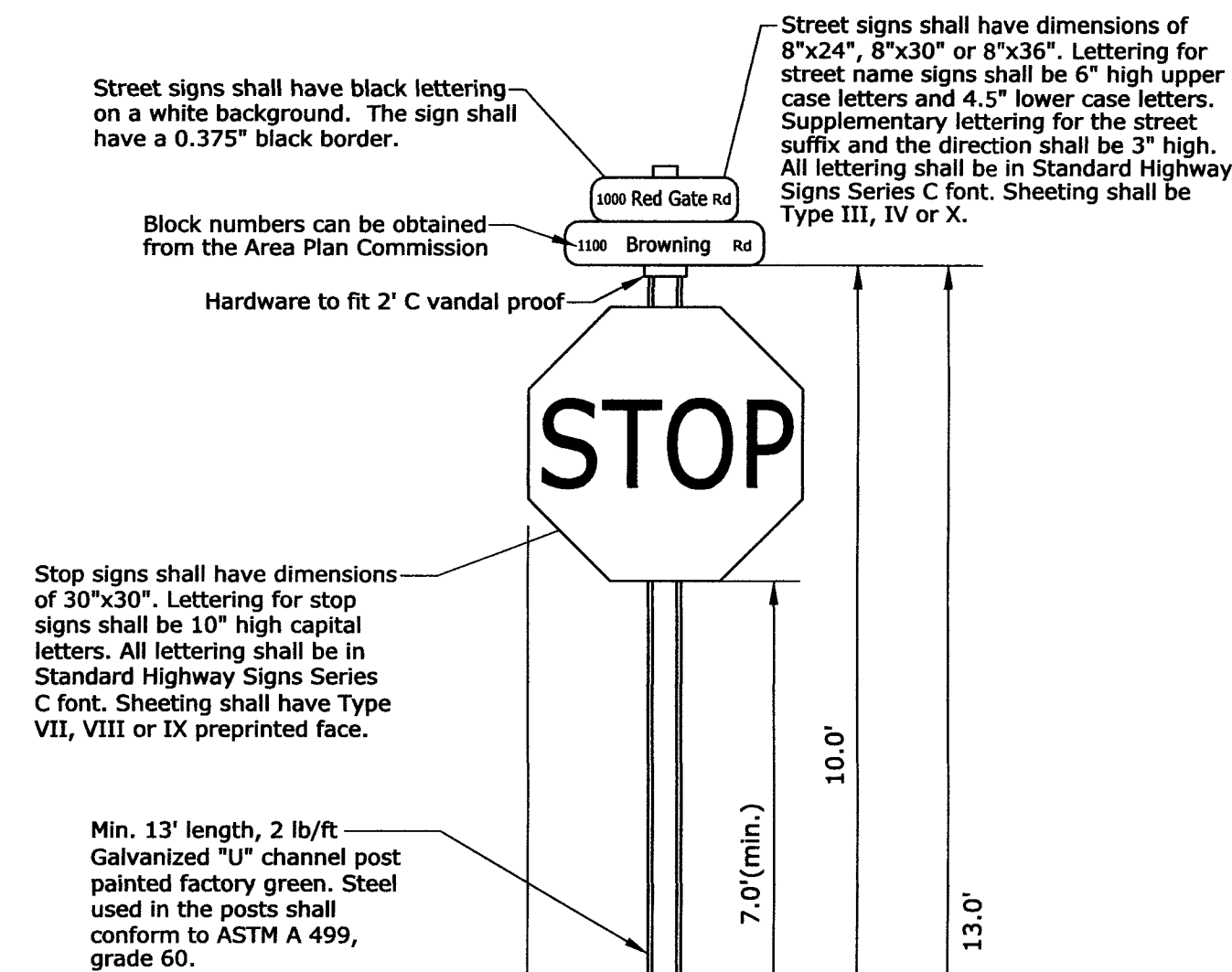
PRECAST CONCRETE END SECTION



- NOTES:**
1. 1/2" preformed expansion joint material at all P.C. and P.T. curb radii.
 2. Tooled contraction joints at 10 ft. centers. Contraction joints to be a minimum 2" deep and 1/8" to 1/4" wide.

REVERSE PITCH ROLL CURB & GUTTER

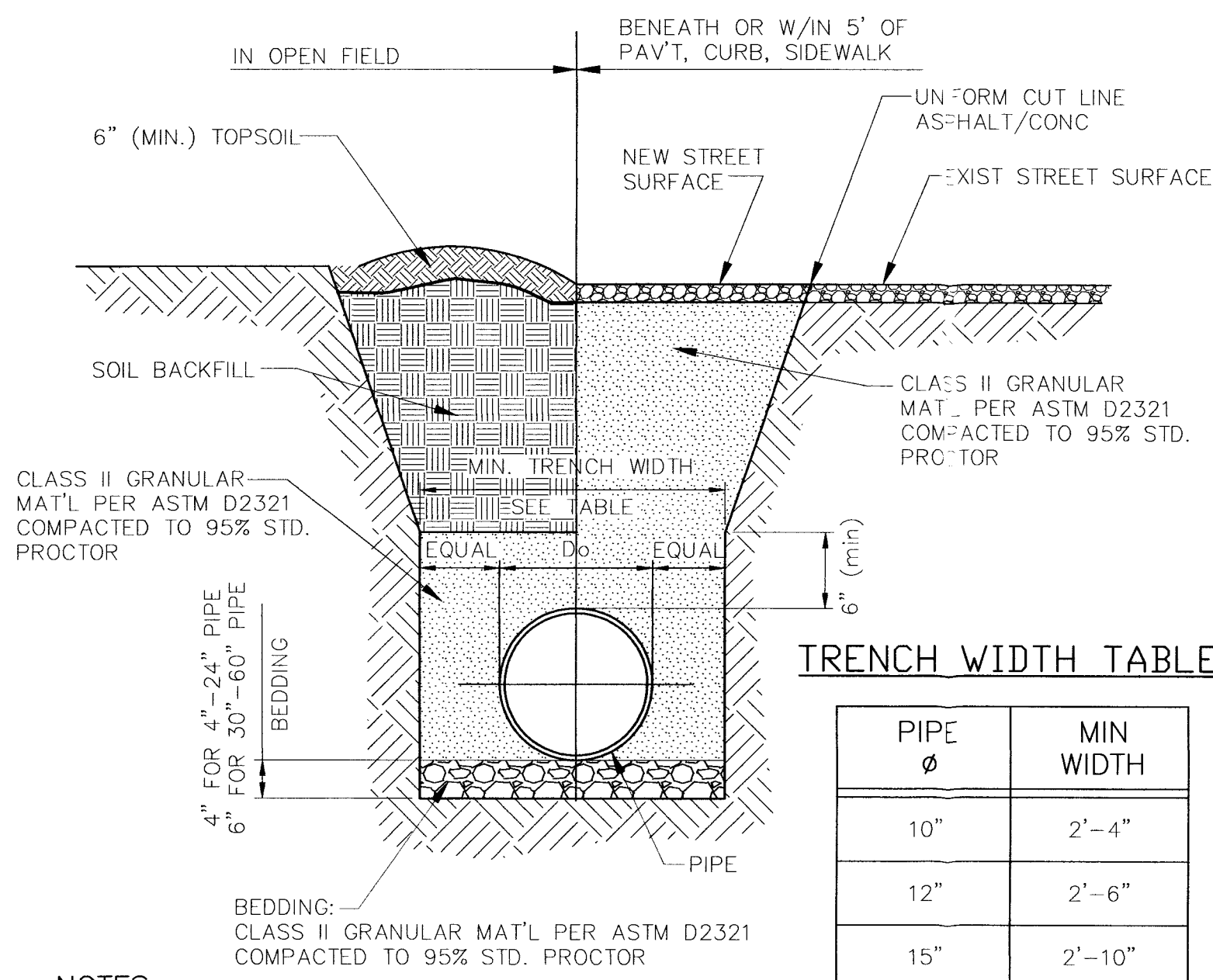
Scale: N.T.S.



- Notes:**
1. All signs shall be High Intensity Grade.
 2. All signage to be installed per the requirements on the Indiana Manual on Uniform Traffic Control Devices (latest issue).
 3. Shop drawings shall be provided to the Vanderburgh County Engineering Dept. for approval prior to manufacture and installation of any signs.

STREET SIGNS

Scale: N.T.S.



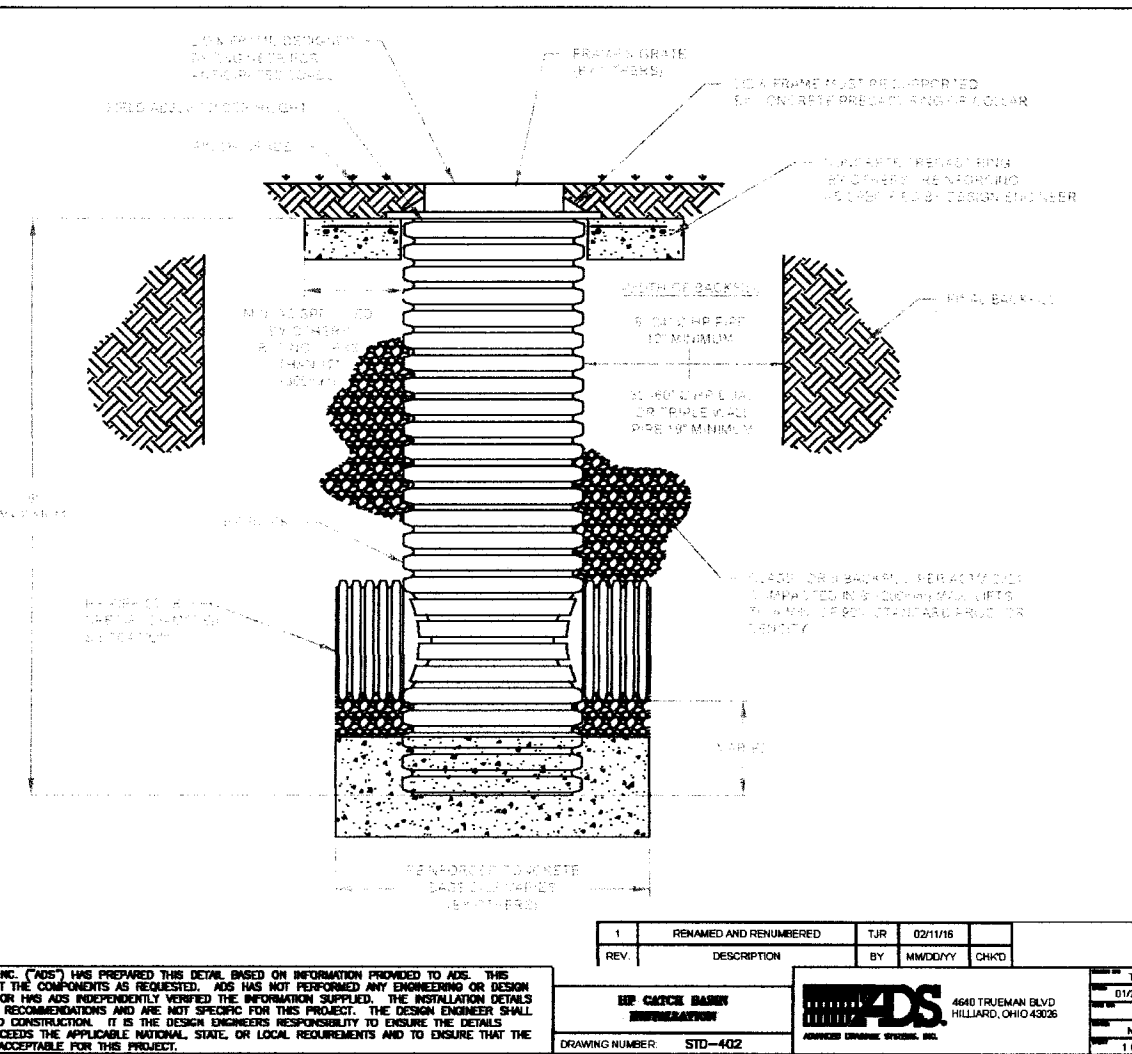
TRENCH WIDTH TABLE

PIPE Ø	MIN WIDTH
10"	2'-4"
12"	2'-6"
15"	2'-10"

- NOTES:**
1. NEW STREET SURFACE SHALL COMPLY WITH LOCAL AUTHORITY JURISDICTION.
 2. TRENCH WALLS TO BE SUPPORTED AS REQUIRED BY OSHA.
 3. MIN COVER TO BE BELOW OFFICIAL STREET GRADE.

TYPICAL TRENCH SECTION HDPE PIPE (N-12 OR EQUAL)

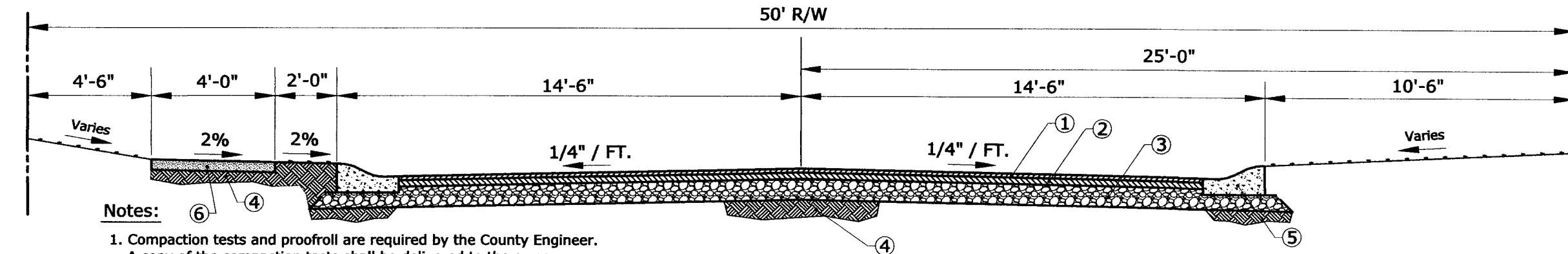
N.T.S.



- Notes:**
1. 1/2" preformed expansion joint material at all P.C. and P.T. curb radii.
 2. Tooled contraction joints at 10 ft. centers. Contraction joints to be a minimum 2" deep and 1/8" to 1/4" wide.

CONCRETE ROLL CURB AND GUTTER

Scale: N.T.S.

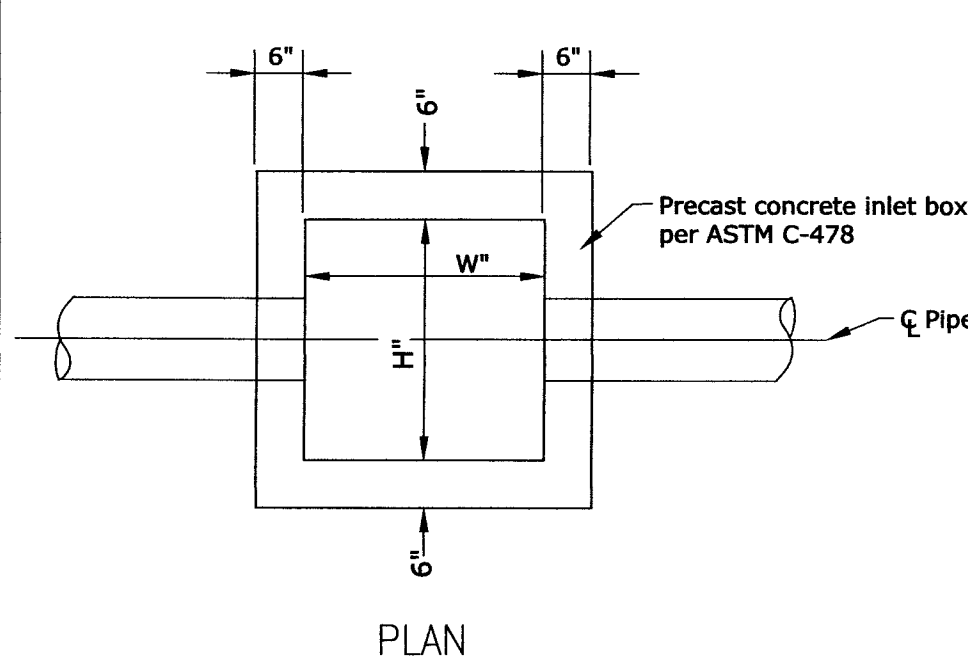


- Notes:**
1. Compaction tests and proofroll are required by the County Engineer. A copy of the compaction tests shall be delivered to the owner and the County Engineer's office.
 2. Sidewalks shall have sawed contraction joints every 5 feet on center and expansion joints every 50 feet on center and at all intersections. Refer to INDOT standard Drawing E604-SWCR revised September 2018. Any sidewalk constructed in excess of 2% must be removed and replaced.
 3. All sidewalks and ADA ramps to be constructed per current INDOT and County standards. Proof rolling shall be done by a fully legally loaded tri-axle dump truck. There shall be 1 or 2 complete coverages as directed. Roller marks, irregularities or failures shall be corrected. Proof rolling must be completed in the presence of a county inspector.
 4. Subgrade must be proof rolled prior to the placement of any stone or pavement.
 5. All fill must be constructed in lifts not to exceed six inches.

- 1" H.M.A. Surface
 - 2" H.M.A. Base
 - 6" Compacted Agg. Base, #53 - 95% Standard Proctor
 - Compacted Subgrade - 95% Standard Proctor
 - Curb & Gutter per County Stds. - 4000 psi P.C.C.
 - 4" Sidewalk per INDOT and County Stds. - 4000 psi P.C.C.
- Note: Sidewalks only required on the north side of Road #1 & the outside perimeter of Road #2.

29' RESIDENTIAL BITUMINOUS PAVEMENT WITH CONCRETE ROLL CURB & GUTTER

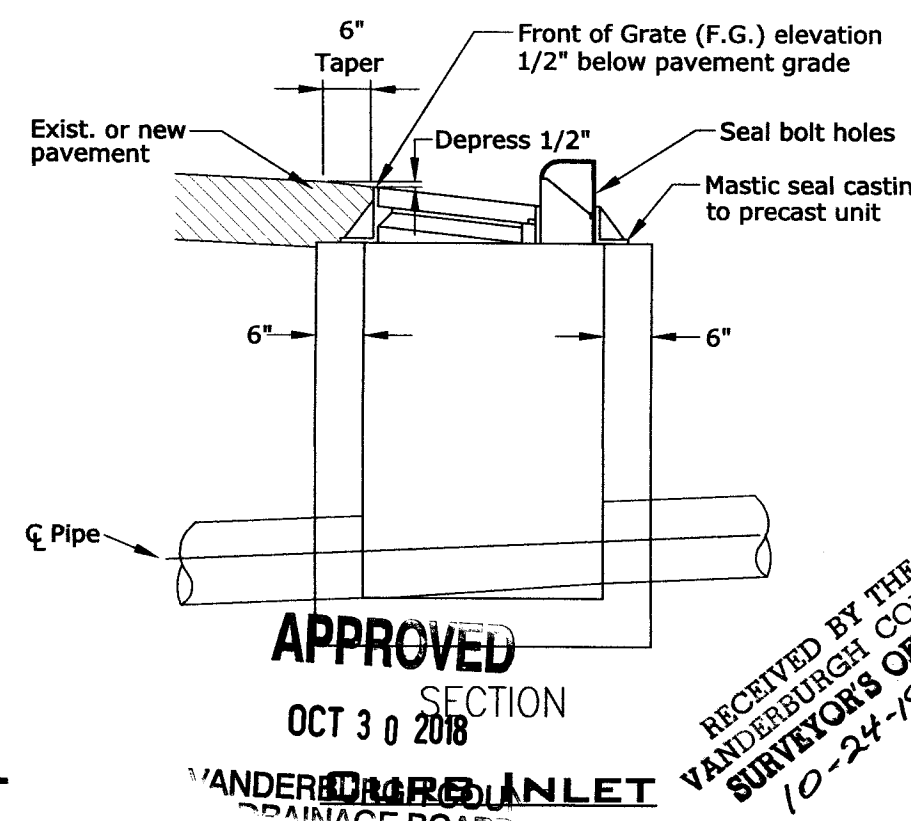
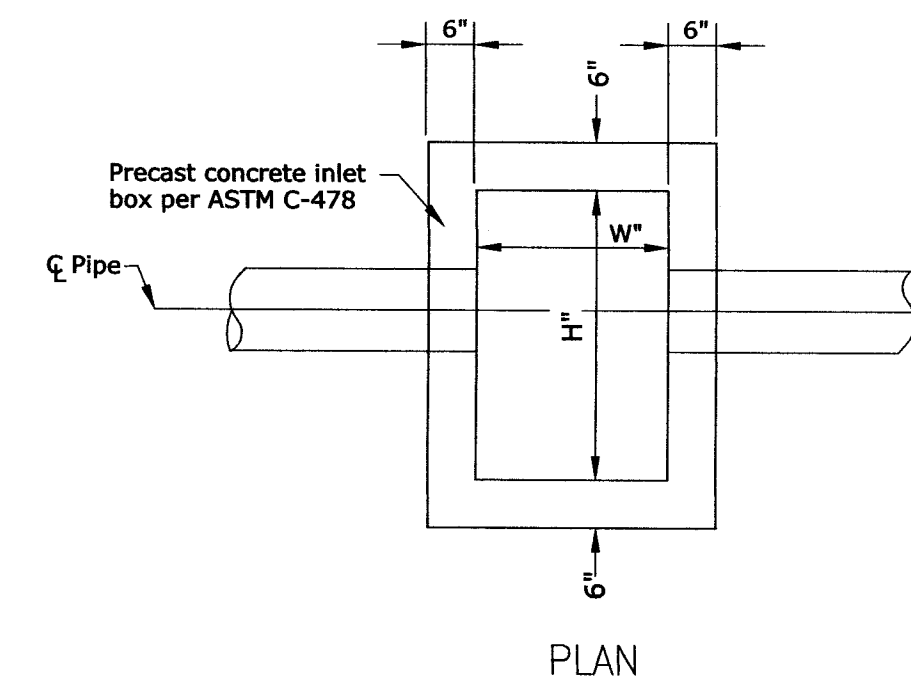
Scale: N.T.S.



INLET BOX TABLE

	INLET TYPE	CURB INLET	AREA DRAIN
BOX SIZE	"W"	24"	30"
	"H"	36"	30"
CASTING	Paved Areas	EJIW #7030	
	Grate	Type M2	
	Non-Paved Areas	EJIW #6610	

- INLET NOTES:**
- All precast units shall conform to ASTM C-478.
- Inlets shall be backfilled with granular material and compacted in 8" loose lifts to 95% Standard Density per ASTM D698.
- Casting shall be mastic sealed to precast unit.
- All connecting pipes shall be grouted with a high strength, non-shrink grout.
- Frame & castings shown are the type & size required for the given box dimensions. Alternates shall be equal to those shown, including grate & opening sizes.



APPROVED

OCT 30 2018

VANDERBURGH COUNTY ENGINEER

RECEIVED BY THE VANDERBURGH COUNTY ENGINEER'S OFFICE 10-24-18

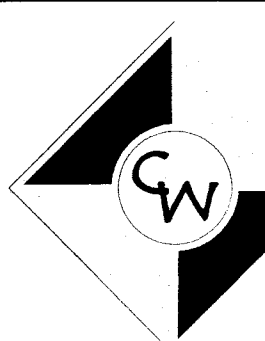
This drawing and/or specifications is provided as an instrument of service provided by Cash Wagner & Associates, PC and is intended for use on this project only. All drawings, specifications, designs, models, ideas, calculations, and arrangements appearing herein constitute the original and unpublished Work of and remains the property of Cash Wagner & Associates, PC. Any reproduction, use or disclosure of the proprietary information contained herein without the prior written consent of the Cash Wagner & Associates, PC is strictly prohibited.

Written dimensions shown hereon shall take precedence over scaled dimensions. Contractors shall calculate and measure required dimensions. Notify Cash Wagner & Associates, PC with any variations in dimensions or conditions from those indicated on these drawings. This drawing was based on available information. Commencement of Work constitutes verification and acceptance of existing conditions.

Application of a material or equipment to Work installed by others constitutes acceptance of that Work and assumption of responsibility for satisfactory installation.



C. L. Smith
SIGNATURE
24 Oct 18
DATE



CASH WAGNER & ASSOCIATES, PC

414 CITADEL CIRCLE
SUITE B
EVANSVILLE, IN 47715
PH: 812.401.5561
FAX: 812.401.5563
CELL: 812.774.2988
E-MAIL: CSMERITT@CASHWAGNER.COM

NO.	DATE	BY	DESCRIPTION
1	09.13.18	G.A.M.	Added HDPE typical trench section
2	10.24.18	G.A.M.	Added ADS 10" Catch Basin detail, sidewalk construction notes and reverse pitch curb & gutter detail

PROJECT NO.:	18-3294
DESIGNED BY:	G.A.M.
DRAWN BY:	G.A.M.
FILENAME:	3294 Road Storm Dbs
LAYOUT TAB:	
SCALE:	As Shown

PROJECT:	BROWNING MANOR
ADDRESS:	BROWNING ROAD EVANSVILLE, INDIANA
SHEET TITLE:	ROAD & STORM SEWER DETAILS

DATE:	05.02.18
DRAWING NO.:	C-110
OF:	