

BRIDLEWOOD - SECTION THREE

RESIDENTIAL SUBDIVISION

APPROVALS

SANITARY SEWER PLANS

RECOMMENDED BY: _____ DATE: _____

APPROVED BY: _____ DATE: _____

DRAINAGE PLANS

RECOMMENDED BY: _____ DATE: _____

APPROVED BY: _____ DATE: _____

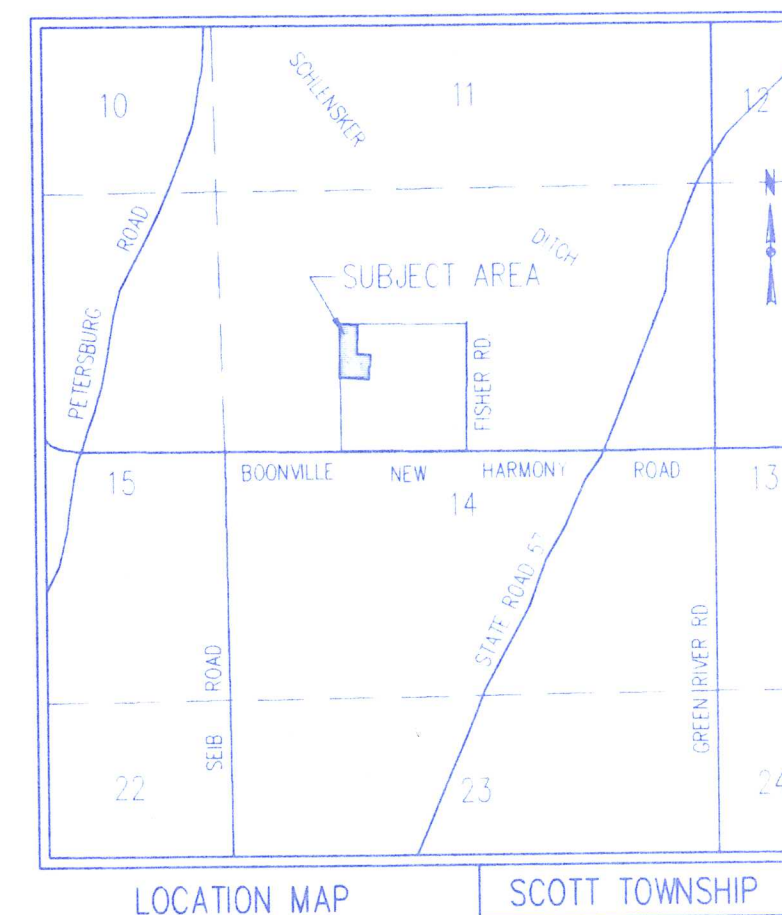
ROADWAY PLANS

RECOMMENDED BY: John Stal DATE: 2/14/01
John Stal, Vanderburgh County Engineer

APPROVED BY: David W. Masby DATE: _____
David W. Masby, President

APPROVED BY: William J. Farnell DATE: _____
William J. Farnell, Vice President

APPROVED BY: Richard Mouldock DATE: _____
Richard Mouldock, Member



LOCATION MAP
SCALE: 1" = 2000'

SHEET INDEX

COVER SHEET	PLAT
PLAT	INDEX
INDEX	INDEX
WATER EXTENSION PLAN	WATER
PLAN & PROFILE-WAYLAND COURT & GRASSMERE LANE	RP-1
EROSION CONTROL PLAN	ECP
SANITARY DETAILS	DE-1
PAVEMENT DETAILS	DE-2
STORM SEWER DETAILS	DE-3

NOTIFICATION REQUIREMENTS

THE CONTRACTORS SHALL NOTIFY ALL UTILITIES 48 HOURS BEFORE BEGINNING WORK FOR FIELD LOCATIONS. THE UTILITIES TO BE NOTIFIED INCLUDE THE FOLLOWING:

SOUTHERN INDIANA GAS & ELECTRIC COMPANY
EVANSVILLE WATER & SEWER UTILITY
AMERITECH
INSIGHT COMMUNICATION

1-800-382-5544

THE FOLLOWING GOVERNMENTAL AGENCIES SHALL BE NOTIFIED 24 HOURS PRIOR TO BEGINNING WORK AND ON A DAILY BASIS THEREAFTER WHEN PERFORMING THE WORK LISTED BELOW:

STORM SEWERS, STREET SUBGRADE, & STREETS
VANDERBURGH COUNTY ENGINEER 435-5773

SANITARY SEWERS
EVANSVILLE WATER & SEWER UTILITY OPERATIONS DEPT.
421-2130

SITECON, Inc.

Engineers-Surveyors

10335 Hedden Rd. Suite 2
Evansville, Indiana 47725
(812) 868-0877

BRIDLEWOOD SEC 3
 As Built 07-19-2002
 - EXAMINED -
 SHEETS W/E 1-17 ECP NOT INCLUDED