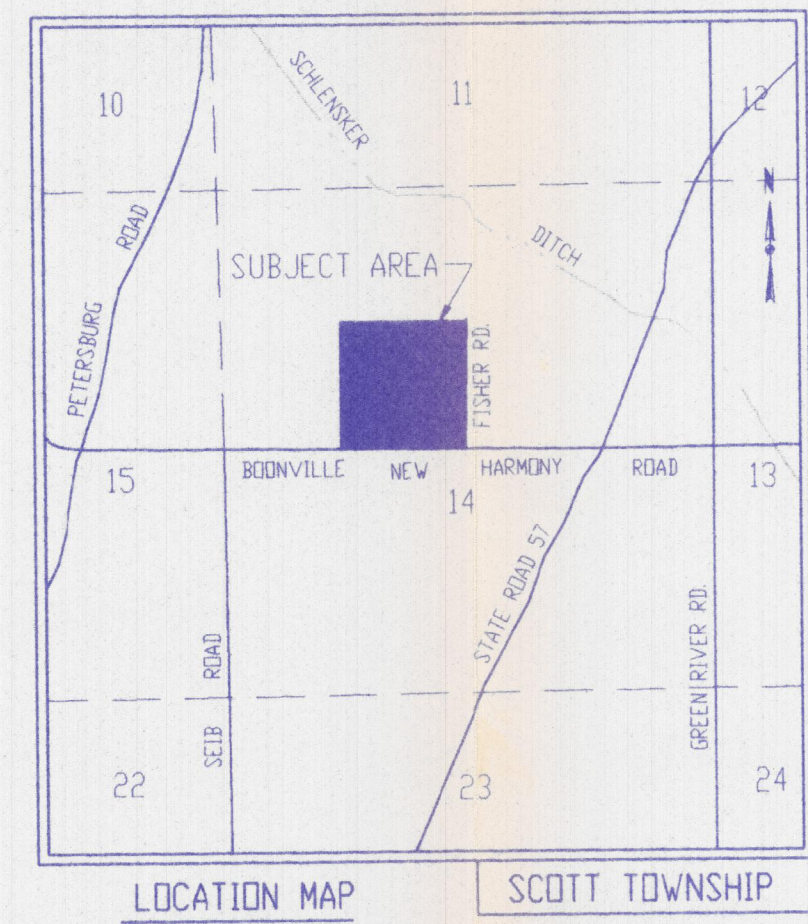
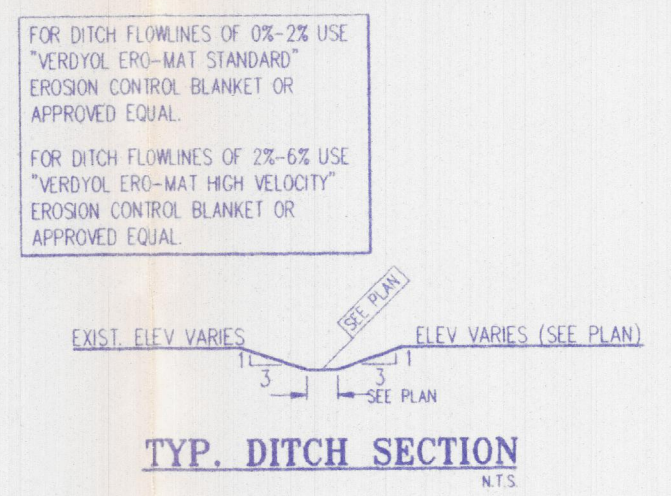
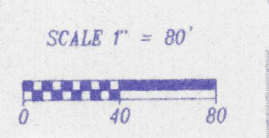


When dimensions on these drawings shall have precedence over scale dimensions. Contractors shall verify and be responsible for all dimensions and conditions on the job and SITECON, Inc. shall not be responsible for any errors or omissions from the dimensions and conditions shown by these drawings.



**NOTES**

- ALL NOTED PRACTICES AND LEGEND DETAILS ARE SPECIFIED IN THE INDIANA HANDBOOK FOR EROSION CONTROL IN DEVELOPING AREAS, DATED OCTOBER, 1992.
- THESE EROSION CONTROL MEASURES ARE GENERAL GUIDE LINES FOR THE CONTRACTOR TO FOLLOW. THE CONTRACTOR IS REQUIRED TO KEEP ALL SEDIMENT OFF PUBLIC ROADS AND MUST FOLLOW ALL OTHER GUIDELINES AS SPECIFIED IN THE INDIANA HANDBOOK FOR EROSION CONTROL IN DEVELOPING AREAS (1992).
- A TEMPORARY GRAVEL CONSTRUCTION ENTRANCE/EXIT PAD (PRACTICE 3.01) MUST BE CONSTRUCTED BEFORE STARTING ANY CONSTRUCTION ACTIVITY. IF THE CONTRACTOR NEEDS TO ACCESS THE SITE FROM OTHER LOCATION(S), AN ADDITIONAL TEMPORARY GRAVEL CONSTRUCTION ENTRANCE/EXIT PAD MUST BE CONSTRUCTED AT EACH LOCATION.
- PROTECT ALL CURB INLETS IN PAVED ROADWAYS WITH GRAVEL CURB INLET PROTECTION (PRACTICE 3.61) OR SANDBAG CURB INLET PROTECTION (PRACTICE 3.64).
- STRAW BALE DAMS/FILTERS (PRACTICE 3.75) ARE DENOTED IN AREAS WITH SLOPES OF 2-5% AND 5-10%. MAXIMUM DISTANCE ABOVE STRAW BALE DAM/FILTER TO BE 75 FT. FOR 2-5% SLOPES AND 50 FT. FOR 5-10% SLOPES.
- SILT FENCE (PRACTICE 3.74) TO BE INSTALLED TO PROVIDE PERIMETER SHEET FLOW RUNOFF PROTECTION FROM SEDIMENTATION LEAVING THE PROPERTY. SILT FENCE NOT TO BE USED IN AREAS LIKELY TO EXPERIENCE CONCENTRATED RUNOFF.
- ALL ROCK CHUTES (PRACTICE 3.41) INSTALLED DURING CONSTRUCTION FOR EROSION CONTROL PURPOSES, ARE TO REMAIN IN PLACE AS A PERMANENT DRAINAGE FEATURE TO PREVENT EROSION AT THE OUTLETS OF THE CULVERTS.
- SURFACE ROUGHENING (PRACTICE 3.03) TO BE USED ON GRADED AREAS THAT ARE STABILIZED IMMEDIATELY IN ORDER TO REDUCE STORM WATER RUNOFF VELOCITY UNTIL SEEDING TAKES PLACE.
- VERDYOL ERO-MAT EROSION CONTROL BLANKET (STANDARD OR BETTER OR APPROVED EQUAL) TO BE INSTALLED ALONG CUT OR IMPROVED DRAINAGE SWALES UPON COMPLETION OF FINAL GRADING. SEE EROSION CONTROL BLANKET (PRACTICE 3.17) AND/OR GRASS-LINED CHANNEL (PRACTICE 3.31).
- EXCAVATED OR FILL AREAS LEFT EXPOSED FOR PERIODS GREATER THAN 14 DAYS WITHOUT WORK ARE TO BE TEMPORARILY MULCHED AND SEEDED (PRACTICES 3.11 & 3.15).
- ALL DISTURBED AREAS ARE TO BE PERMANENTLY SEEDING AND MULCHED AFTER FINAL GRADING AND UTILITY INSTALLATIONS ARE COMPLETE (PRACTICES 3.12 & 3.15).
- GRADED AREAS WITHIN THE RIGHT-OF-WAY TO HAVE SEEDING, FERTILIZER AND MULCHING UPON COMPLETION OF FINAL GRADING (SEE PRACTICE 3.12).
- SLOPES/BERMS FOR DETENTION BASIN TO HAVE SEEDING, FERTILIZER AND MULCHING UPON COMPLETION OF FINAL GRADING (SEE PRACTICE 3.12).
- IF ANY EROSION CONTROL MEASURE IS NOT SUFFICIENT, THE CONTRACTOR SHALL ADD ADDITIONAL EROSION CONTROL MEASURES AND THEN MODIFY THE PLAN TO INCLUDE THOSE MEASURES. CONTRACTOR MUST POST AND PROVIDE ENGINEER WITH ANY CHANGES TO THE SEDIMENT CONTROL PLAN AS CONSTRUCTION PROGRESSES.



**LEGEND**

- 385 ——— EXISTING CONTOUR
- X SF X SEDIMENT FENCE (PRACTICE 3.74)
- SB STRAW BALE DAM (PRACTICE 3.75)
- D PERMANENT DIVERSION (PRACTICE 3.22)
- [Hatched Box] EROSION CONTROL BLANKET (PRACTICE 3.17)
- F G FABRIC DROP-INLET PROTECTION (PRACTICE 3.52)
- SA SB STRAW BALE DROP-INLET PROTECTION (PRACTICE 3.54)
- SA SB SAND BAG INLET PROTECTION (PRACTICE 3.64)
- RC ROCK CHUTE (PRACTICE 3.41)
- [Stippled Box] TEMPORARY GRAVEL (PRACTICE 3.01) ENTRANCE / EXIT
- SURFACE RUNOFF DIRECTION
- R/W PROPERTY BOUNDARY
- FLOW LINE

**SITECON, Inc.**  
Engineers-Surveyors

10335 Hedden Rd. Suite 2  
Evansville, Indiana 47711  
(812) 868-0877

**BRIDLEWOOD**

Project

Revisions

Description

No. By Date

Scale: 1" = 80'

Designed By: KJP Job Number: 109-98-7

Drawn By: RRB Date: 6-28-99

Checked By: [Blank] Filename: SUBPLAT.DWG

Sheet Number: ECP

**EROSION CONTROL PLAN**

