

LOCATION MAP

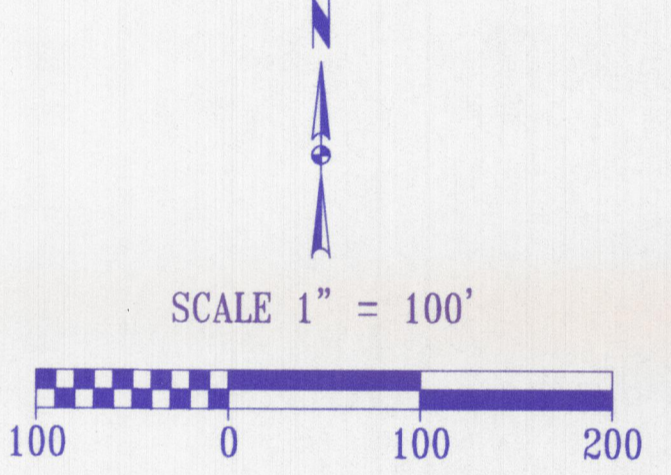
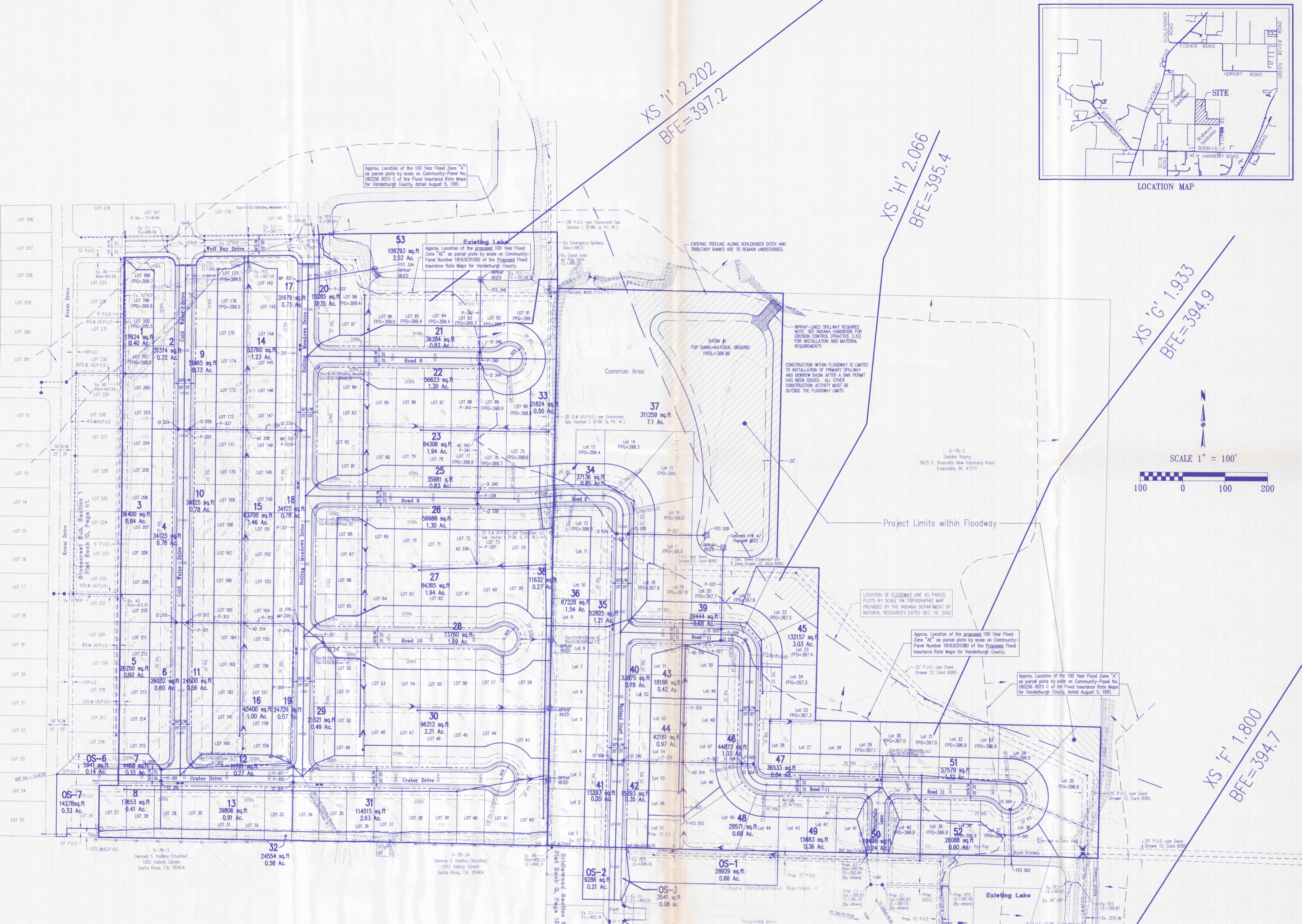
Morley and Associates, Inc.
 Consulting Engineers/Surveyors/Architects
 600 S.E. Sixth Street
 Evansville, Indiana 47713
 (812) 464-9585

XS 'I' 2.202
 BFE=397.2

XS 'H' 2.066
 BFE=395.4

XS 'G' 1.933
 BFE=394.9

XS 'F' 1.800
 BFE=394.7



All ideas, designs, calculations, and arrangements indicated or represented by this drawing are owned by and the property of Morley and Associates, Inc. and were created for the use on and in connection with the specified project. None of such ideas, designs, calculations, or arrangements shall be used by or disclosed to any other person or organization without the written permission of Morley and Associates, Inc.

Written dimensions on these drawings shall have precedence over scale dimensions. Contractors shall verify and be responsible for all field measurements. The Engineer shall not be responsible for any conditions shown by these drawings.

No.	By	Date	Description

Project: Stonecrest/Bridlewood-Section 6
 Street Title: Drainage Sub-basins

Scale: 1"=100'
 Designed By: R.S.L. Job Number: 5527-4(B)
 Drawn By: G.A.M. Date: 3/31/03
 Filename: J:\5527\Civil\SUBBASINS.dwg
 Sheet Number: