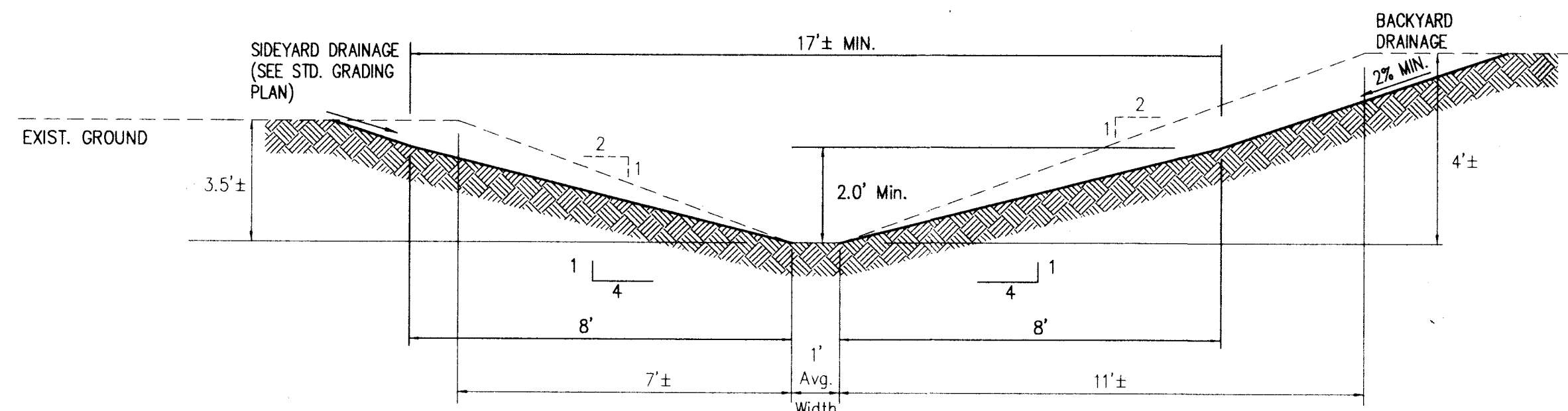


- GENERAL NOTES:**
1. THE LOWEST FLOOR ELEVATIONS OF ANY ENCLOSED SPACE (INCLUDING THE GARAGE OR BASEMENT) MUST BE AT LEAST TWO FEET ABOVE THE 100 YEAR FLOOD ELEVATION. THIS MINIMUM FLOOR ELEVATION IS CALLED THE FLOOD PROTECTION GRADE (FPG). HIGHER FINISHED FLOOR ELEVATIONS ARE REQUIRED IN SOME INSTANCES IN ORDER TO PROVIDE POSITIVE DRAINAGE TO SWALES AND STREETS.
 2. ANY CRAWL SPACE LOCATED ON A LOT WITH FPG DESIGNATION SHALL MAINTAIN AN ELEVATION AT THE LOWEST POINT IN THE CRAWL SPACE OF 0.10 FEET ABOVE THE 100 YEAR FLOOD ELEVATION (BFE).
 3. FILL MATERIAL FOR BUILDING PADS FOR THE FOUNDATIONS OF RESIDENTIAL STRUCTURES SHALL BE PLACED AFTER STRIPPING OF TOPSOIL AND SHALL BE COMPACTED TO 95% OF THE MAXIMUM DENSITY OBTAINABLE WITH THE STANDARD PROCTOR METHOD (ASTM D 698).

**Standard Grading Plan
Dwelling or Accessory Structures**

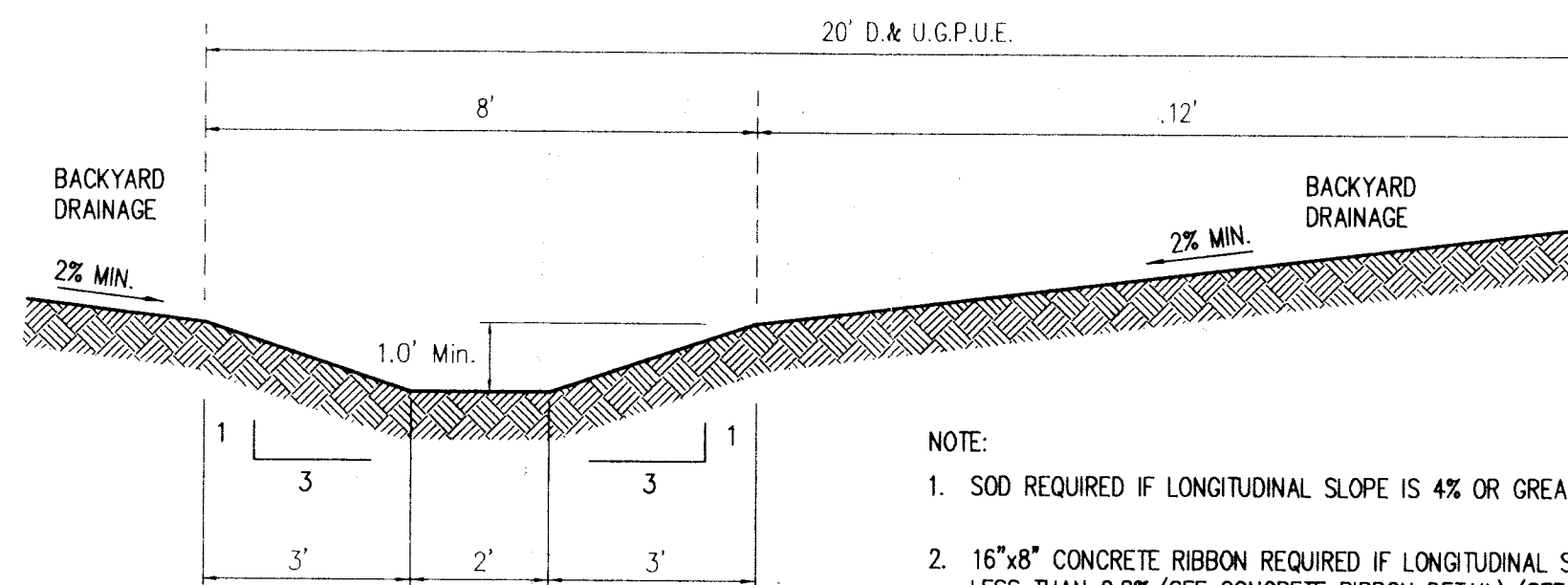
No Scale



Section B-B Interconnection Ditch

Scale: 3/8" = 1'-0"

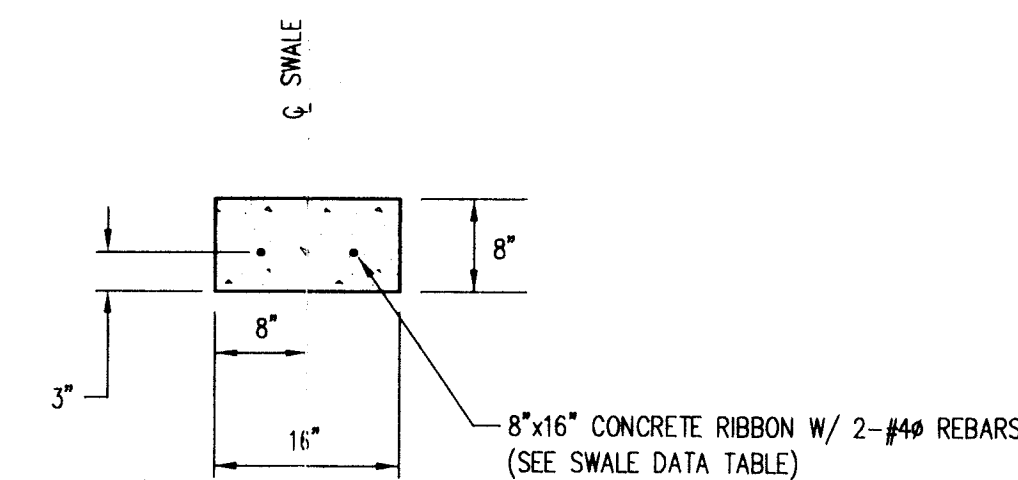
1. BEGIN DITCH SECTION @ CRATER DRIVE CURB TURNOUT SWALE TIE-IN
2. END DITCH SECTION @ SOUTH SIDE OF PIPE 529
3. NORTH AMERICAN GREEN SC150 OR APPROVED EQUIVALENT
EROSION CONTROL BLANKET REQUIRED



- NOTE:**
1. SOD REQUIRED IF LONGITUDINAL SLOPE IS 4% OR GREATER.
 2. 16"x8" CONCRETE RIBBON REQUIRED IF LONGITUDINAL SLOPE IS LESS THAN 0.8% (SEE CONCRETE RIBBON DETAIL) (SEE SWALE DATA TABLE)
 3. RIP-RAP OR EROSION CONTROL BLANKET REQUIRED ON SIDE SLOPES GREATER THAN 3:1. REFER TO EROSION/SEDIMENT CONTROL PLAN.

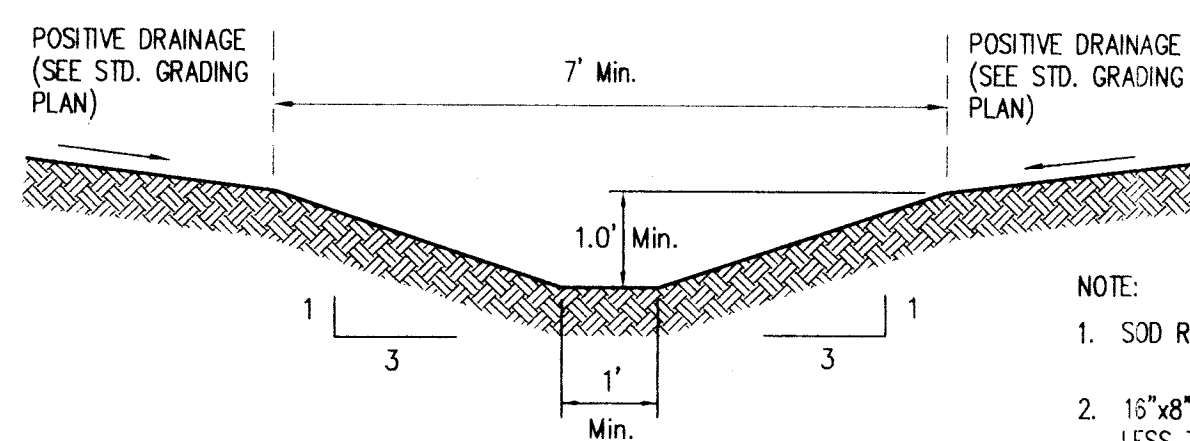
Section D-D Drainage Swales

Scale: 3/8" = 1'-0"



Concrete Ribbon Detail

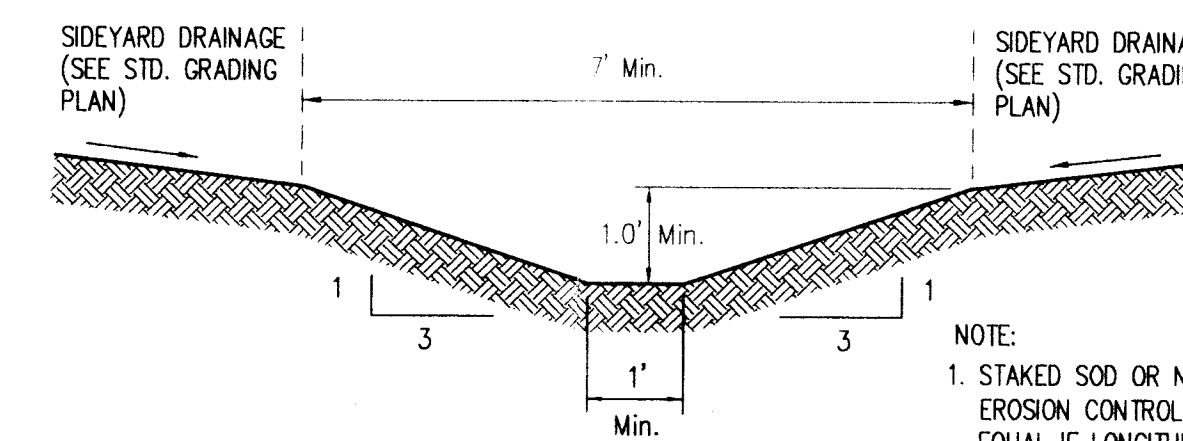
NO SCALE



- NOTE:**
1. SOD REQUIRED IF LONGITUDINAL SLOPE IS 4% OR GREATER.
 2. 16"x8" CONCRETE RIBBON REQUIRED IF LONGITUDINAL SLOPE IS LESS THAN 0.8% (SEE CONCRETE RIBBON DETAIL) (SEE SWALE DATA TABLE)
 3. RIP-RAP OR EROSION CONTROL BLANKET REQUIRED ON SIDE SLOPES GREATER THAN 3:1. REFER TO EROSION/SEDIMENT CONTROL PLAN.

Typical Swale Cross Section

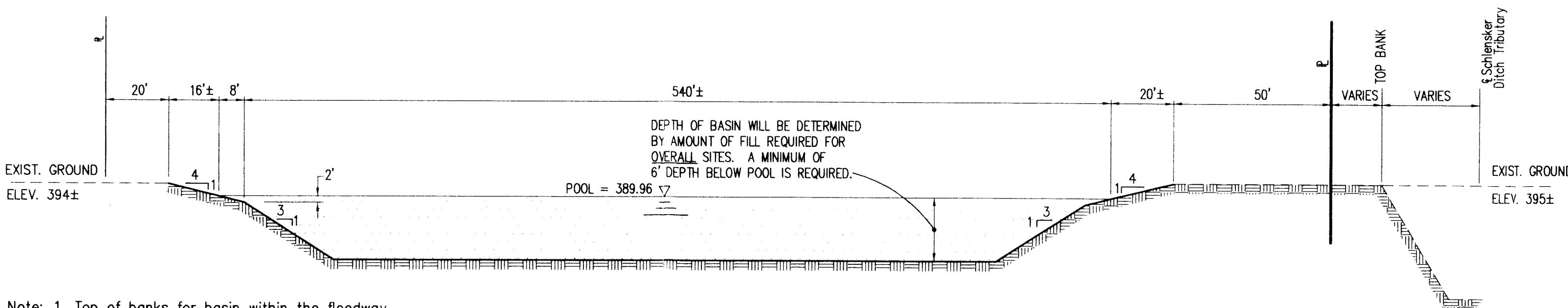
Scale: 1/2" = 1'-0"



- NOTE:**
1. STAKED SOD OR NORTH AMERICAN GREEN TEMPORARY EROSION CONTROL BLANKET SC-150 OR APPROVED EQUAL IF LONGITUDINAL SLOPE IS 2% TO 6%.
 2. 16"x8" CONCRETE RIBBON REQUIRED BETWEEN LOTS 45 AND 46 (SEE CONCRETE RIBBON DETAIL)

Typical Emergency Overflow Swale Cross Section

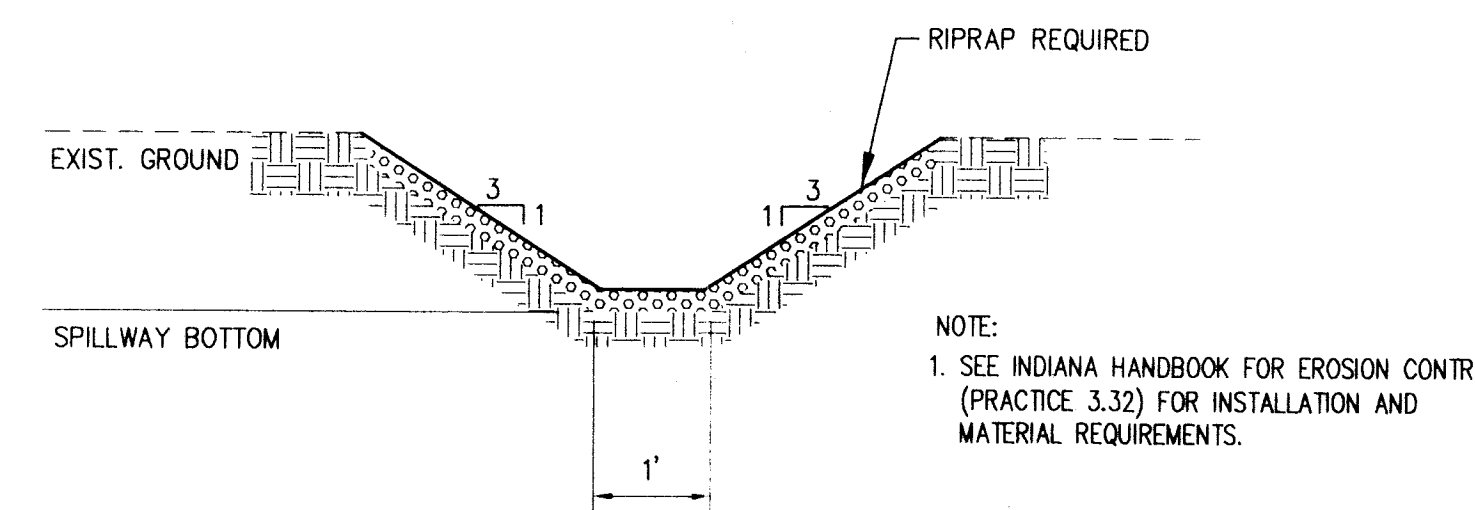
Scale: 1/2" = 1'-0"



- Note:**
1. Top of banks for basin within the floodway are at existing ground. No fill is allowed within the limits of the Floodway.
 2. Existing treeline along Schlensker Ditch and tributary banks are to remain undisturbed except for the location of the basin spillway.

Basin #1 Section A-A

No Scale



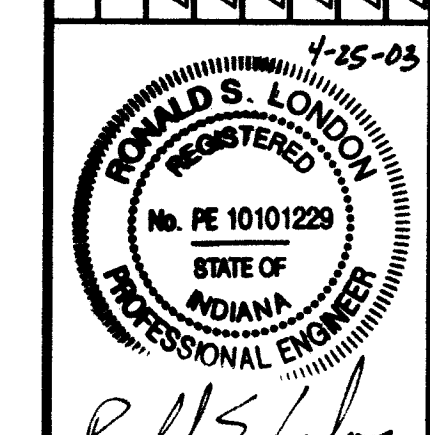
Basin #1 Spillway

No Scale

Morley and Associates, INC.
Consulting Engineers/Surveyors/Architects
600 S.E. Sixth Street
Evansville, Indiana 47713
(812) 464-9505

All ideas, designs, calculations, and arrangements indicated or referenced by this drawing are owned by and the property of Morley and Associates, Inc. No part of this drawing, design, calculations, or arrangements shall be used by or disclosed to any person, firm, or corporation for any purpose whatsoever without the written permission of Morley and Associates, Inc. Written dimensions on these drawings shall have precedence over scale dimensions. Contractors shall verify and be responsible for the accuracy of all dimensions and conditions shown on the drawings and conditions shown by these drawings.

Revisions	Description	Date	By



Project: Bridlewood Subdivision Section 6
Sheet Title: Drainage/Grading Details

Scale: AS SHOWN
Designed By: R.S.L. Job Number: 5527-4(B)
Drawn By: G.A.M. Date: 4/25/03
Filename: J:\5527\Civil\5527det.dwg
Sheet Number: C-10

RECEIVED BY THE
VAN BURG COUNTY
SURVEYORS OFFICE
4/25/03 9:50am-1990