

SITE LEGEND:

- NEW SPOT ELEVATIONS ARE INDICATED THISLY.
- T.A. TOP OF WALL
- T.C. TOP OF CURB
- E.P. LIGHT POLE
- E.J. EXPANSION JOINT
- EXIST. SPOT ELEVATION
- NEW SPOT ELEVATION

SITE DEMOLITION REFERENCE NOTES:

1. EXISTING PAVEMENT TO BE REMOVED.
2. EXISTING MALK TO BE REMOVED.
3. LIGHT POLE AND BASE TO BE REMOVED.

GENERAL SITE NOTES:

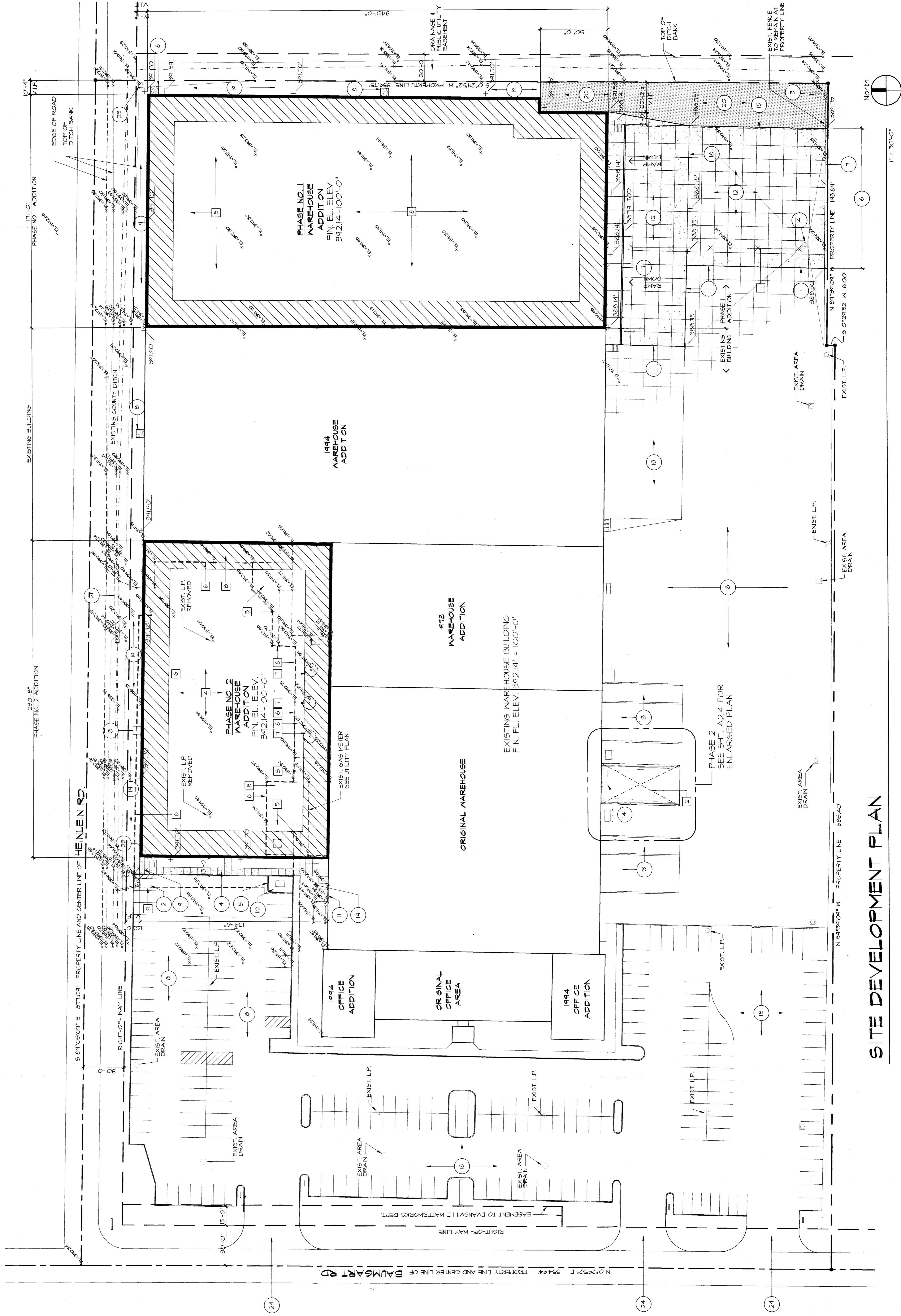
1. CONTRACTOR SHALL VERIFY ALL UTILITY AND CITY DEPARTMENTS RECORDS HAVE BEEN ENTERED INTO THE GENERAL CONTRACTOR'S FILES RESPONSIBLE FOR LOCATING AND PROTECTING ALL UTILITIES UNLESS NOTED TO BE RELOCATED OR REMOVED.
2. CONTRACTOR SHALL COORDINATE WORK IN R.O.M. WITH APPROPRIATE MUNICIPAL AUTHORITIES PRIOR TO COMMENCEMENT OF WORK.
3. CONTRACTOR TO ADJUST ELEVATION OF ALL UTILITY MANHOLE, CLEANOUT AND DRAIN COVERS WHICH REMAIN TO COORDINATE WITH NEW CONSTRUCTION.
4. CONTRACTOR TO OBTAIN A GENERAL PERMIT FOR CONSTRUCTION FROM THE EVANSVILLE WATERWORKS DEPARTMENT BY THE INDIANA DEPARTMENT OF ENVIRONMENTAL MANAGEMENT.
5. CONTRACTOR SHALL PROTECT EXISTING PAVEMENT TO REMAIN AND IS REQUIRED TO MAINTAIN TRAFFIC DURING CONSTRUCTION. ALL PAVED DAMAGED DURING CONSTRUCTION SHALL BE PATCHED TO MATCH ADJACENT SURFACES.
6. PROVIDE 1/2" EXPANSION JOINT MATERIAL WITH CONTINUOUS SEALANT JOINT BETWEEN CONCRETE PAVEMENT AND BUILDING EXISTING CONCRETE CONSTRUCTION.
7. SEED AND MULCH ALL AREAS DISTURBED BY NEW CONSTRUCTION.
8. EXISTING PARKING TO REMAIN FOR (206) VEHICLES.

SITE DEMOLITION REFERENCE NOTES:

1. EXISTING CHAIN-LINK FENCING, GATES, AND POST FOUNDATIONS TO BE REMOVED.
2. EXISTING ASPHALT DRIVEWAY TO REMAIN. PROVIDE CONSTRUCTION OF NEW LOADING DOCK.
3. EXISTING 6" CONCRETE PAVEMENT TO BE REMOVED.
4. EXISTING 4" ASPHALT PAVEMENT TO BE REMOVED AND DISPOSED OF OFF-SITE. EXISTING CRUSHED STONE 3/4" TO REMAIN. PROTECT RELL AND TEST PRIOR TO PLACEMENT OF ENGINEERED FILL.
5. EXISTING 4" CONCRETE SIDEWALK TO BE REMOVED.
6. EXISTING CONCRETE CURB TO BE REMOVED.
7. EXISTING TREES TO BE REMOVED.
8. REMOVE SOIL AND GRASS. STRIP TOPSOIL TO A MINIMUM DEPTH OF 6" IN AREA OF NEW BUILDING CONSTRUCTION.
9. EXISTING ASPHALT PAVING TO BE REMOVED WEST OF NEW INTEGRAL ASPHALT PAVING & SUBBASE TO MATCH EXISTING.

SITE REFERENCE NOTES:

1. LINE OF EXISTING CONCRETE PAVEMENT TO REMAIN. WHERE NEW CONCRETE ABUTS EXISTING PROVIDE NO. 3 SMOOTH, GREASED DOMELS 2'-0" O.C. 1'-4" LONG.
2. PROVIDE PAINTED WHITE STANDARD DISABLED PARKING SYMBOL AND PAINTED CROSS-HATCHING.
3. NEW LIGHT POLE AND BASE. SEE DETAIL 4/C1.2.
4. NEW INTEGRAL CURB AND WALK 4'-0" WIDE. SEE DETAIL 2/C1.2.
5. NEW CONCRETE CURB. SEE DETAIL 1/C1.2.
6. NEW GUARD RAIL. SEE DETAIL 3/C1.2.
7. EXISTING CHAIN-LINK FENCE TO REMAIN.
8. NEW 5'-0" X 5'-0" X 4" THICK CONCRETE SLAB WITH 6 X 6, 10/10 MMF. TURN DOWN SLAB EDGE 8". SEE FLOOR PLANS FOR LOCATION.
9. PROVIDE DISABLED CURB CUT.
10. NEW STEEL BOLLARDS. THREE REQUIRED. SEE DETAIL 3/C1.2.
11. EXISTING TRANSFORMER AND PAD TO REMAIN.
12. NEW CONCRETE PAVEMENT - 6-1/2" THICK WITH 6 X 6, 4/4 MMF. ON 5" CRUSHED STONE SUBBASE.
13. EXISTING TRUCK DOCK/CONCRETE RAMP TO REMAIN.
14. NEW AREA DRAIN ON EXISTING PIPE. SEE SHEET U2.1. TOP OF DRAIN 307.40' INVERT 292.30'. CONFIRM LOCATION AND DEPTH. CLEAN OUT EXISTING PIPE.
15. EDGE OF NEW CONCRETE PAVEMENT - TURN DOWN EDGE 1'-0".
16. LINE OF NEW CONCRETE RAMP.
17. NEW TRENCH DRAIN. SEE SHEET U2.1.
18. EXISTING CONCRETE OR ASPHALT PAVEMENT TO REMAIN.
19. SEED NEW LAWN AREA WITH KENTUCKY 31" FESCUE AT A RATE OF 10 LBS. PER 1000 SQ. FT. FERTILIZE ALL NEW LAWN AREAS AND PROTECT SEEDED LAWN AREAS AGAINST EROSION BY SPREADING LAWN MULCH TO FORM A CONTINUOUS BLANKET. PROVIDE 8" LAYER OF COMPACTED NO. 59 STONE IN SHADED AREA.
20. EXISTING PRECAST CONCRETE PIPE CULVERT TO REMAIN. PROVIDE TOPSOIL, SEED AND MULCH AT AREA OF DRIVEWAY REMOVAL.
21. CONCRETE RETAINING WALL. TOP ELEVATION 342.0'. SEE DETAIL 6/C1.2.
22. NEW MANHOLE SEE SHEET U2.1.
23. EXISTING CURB CUT TO REMAIN.
24. EXISTING CURB CUT TO REMAIN.



SITE DEVELOPMENT PLAN

N 84°34'01" W PROPERTY LINE 653.40'

N 84°34'01" W PROPERTY LINE 183.64'

S 0°24'52" W 6.00'



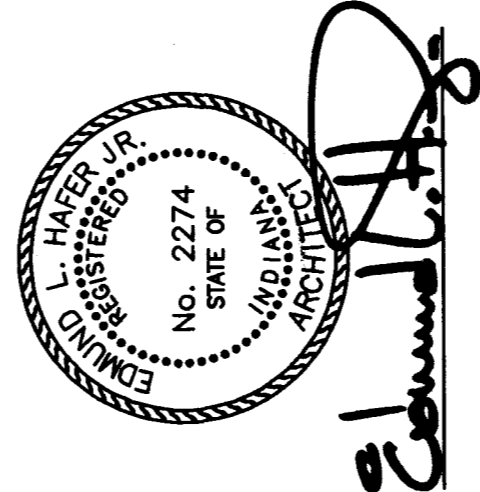
1" = 30'-0"

Warehouse Additions:

SHOE CARNIVAL INC.

8233 Baumgart Rd.
Evansville, Indiana

Edmund L. Hafer & Associates, P.C.
Architecture Engineering Planning Interior Design
Suite 800
21 Southeast Third Street
Evansville, Indiana 47708-1433
Telephone: 812 422-4187
Facsimile: 812 421-6776



Architects Project No. U7-171
Date: October, 1998
Revisions:
RECEIVED OCT 21 1998
SITE REVIEW

Sheet Title and Number
Site Development Plan

C1.1