

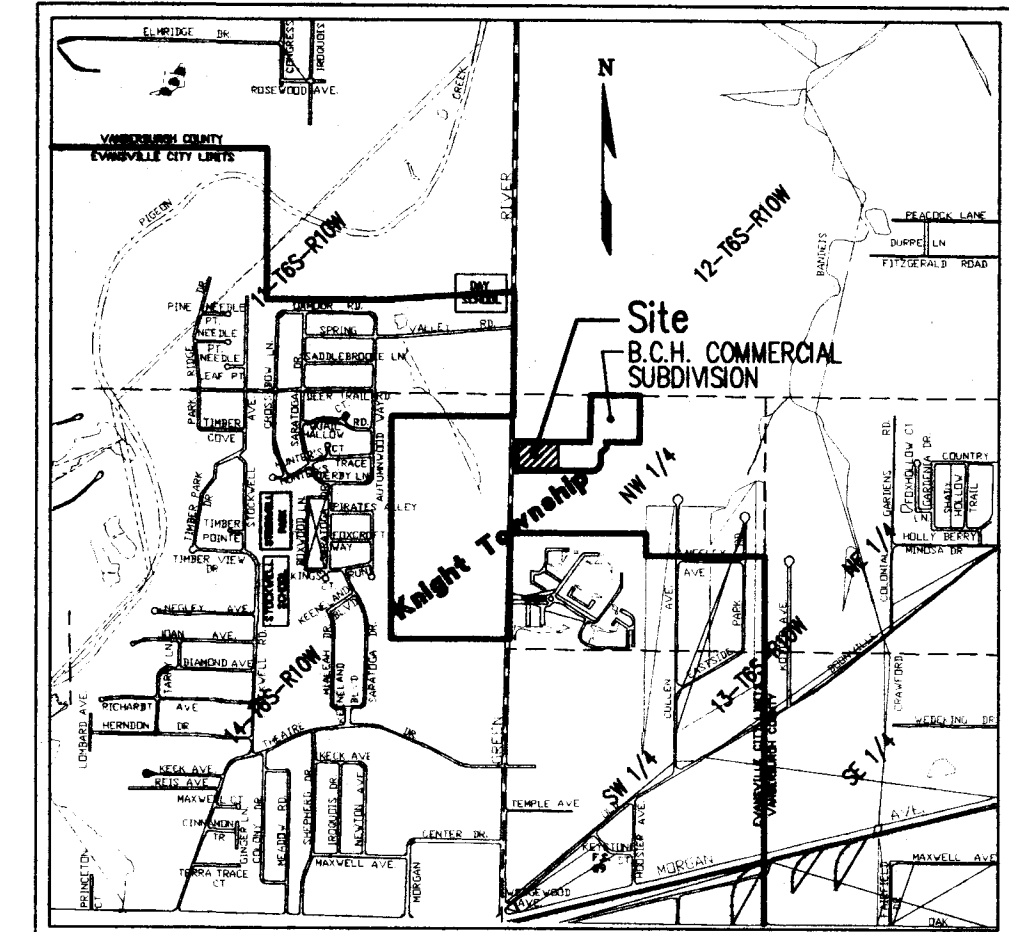
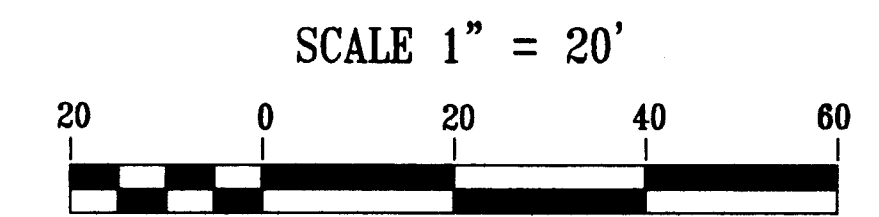
N.W. Corner
NW 1/4, NW 1/4
Section 13-6-10
Alum. Mon. Box w/chisled
"Δ" (End 0.08' North &
0.12' East of Location of
Former R/R Spike Marking
this corner prior to the
re-construction of Green
River Road.

Legend-Existing

- T.J. TELEPHONE JUNCTION BOX
- W.V. WATER VALVE
- S.S.M.H. SANITARY SEWER MAN HOLE
- M.H. MAN HOLE
- C.I. CURB INLET
- CENTER LINE
- BOUNDARY LINE
- EASEMENT LINE
- BUILDING SETBACK LINE
- R.O.W. RIGHT-OF-WAY LINE
- D. & U.P.U.E. DRAINAGE AND UNDERGROUND PUBLIC UTILITY EASEMENT
- T.C. TOP OF CURB ELEVATION
- Gut. GUTTER ELEVATION
- I.E. INVERT ELEVATION
- XXXXX SPOT ELEVATIONS
- T.C. XXXXX EXISTING TOP OF CURB ELEVATION
- GUT. XXXXX EXISTING GUTTER ELEVATION

Legend-Proposed

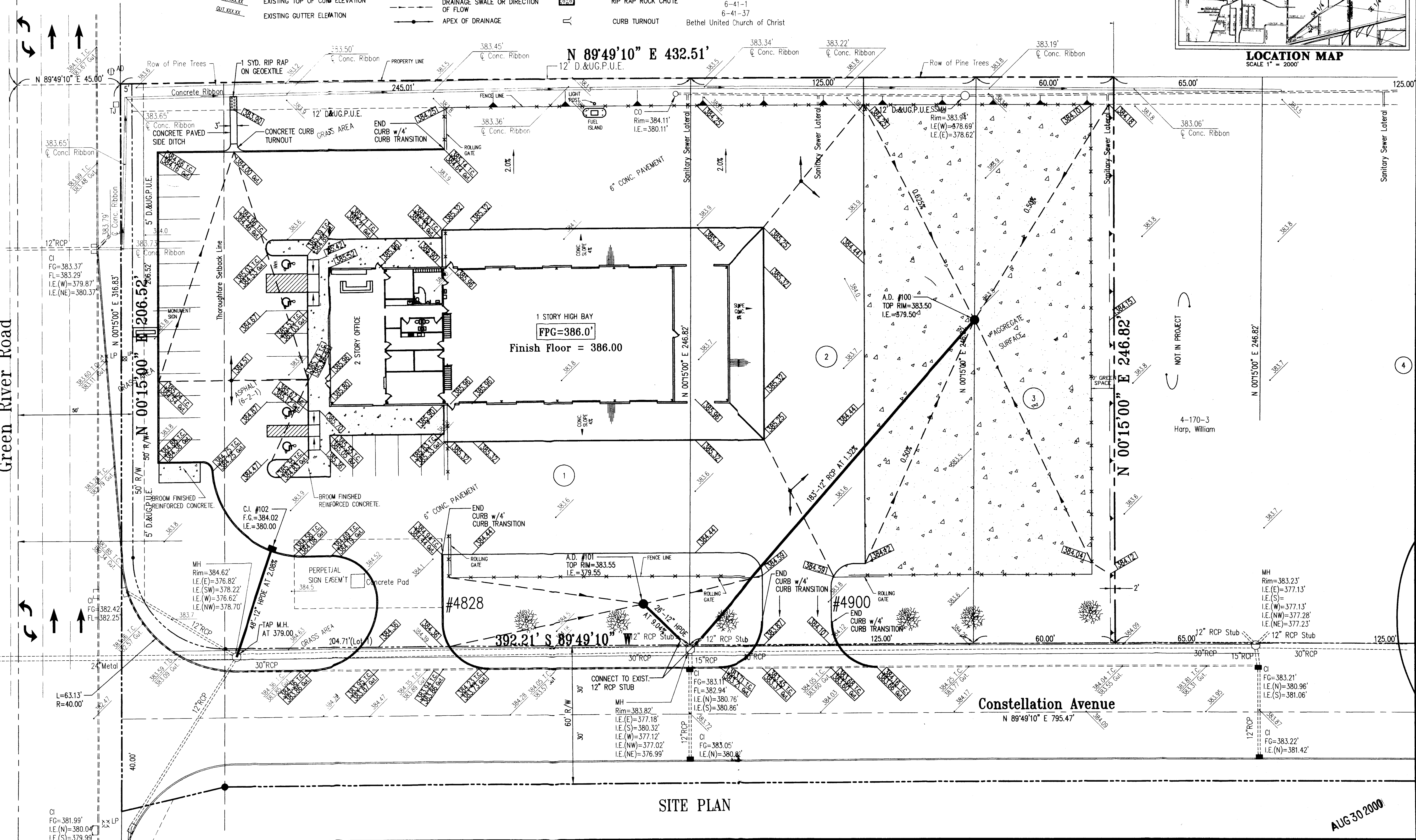
- C.I. CURB INLET AND STR. NO. FRONT OF GRATE ELEVATION INVERT ELEVATION
- A.D. AREA DRAIN AND STR. NO. STORM SEWER PIPE, LENGTH, SIZE & MATERIAL
- FINAL GRADE ELEVATION
- FINAL GRADE ELEVATION AT TOP OF CURB (T.C.)
- FINAL GRADE ELEVATION AT GUTTER (GUT.)
- SLOPE
- DRAINAGE SWALE OR DIRECTION OF FLOW
- APEX OF DRAINAGE
- CONCRETE CURB AND/OR CURB & GUTTER
- CONCRETE SLAB
- 9'x18' PARKING SPACE & NUMBER OF SPACES, W/ 4" WIDE LINE
- 8'x18' ADA ACCESSIBLE PARKING SPACE w/4" WIDE LINE
- 8' ADA ACCESS ROUTE
- RIP RAP ROCK CHUTE
- CURB TURNOUT



LOCATION MAP
SCALE 1" = 2000'

Morley and Associates, Inc.
Consulting Engineers/Surveyors/Architects
600 S.E. Sixth Street
Evansville, Indiana 47713
(812) 464-9565

All ideas, designs, calculations, and arrangements indicated or represented by this drawing are owned by and the property of Morley and Associates, Inc. and were created for the use and in connection with the specified project. None of such ideas, designs, calculations, or arrangements shall be used, copied, or reproduced in any form, or for any purpose whatsoever, without the written permission of Morley and Associates, Inc. Morley and Associates, Inc. shall not be held responsible for any errors or omissions in this drawing or for any consequences arising from the use of this drawing. The user of this drawing shall be responsible for all dimensions and conditions on the job and Morley and Associates, Inc. must be notified of any variations from the dimensions and conditions shown by these drawings.



No.	By	Date	Description



Mid American Leasing, L.L.P.
4828 Constellation Ave.
Project: **Grading & Drainage Plan**
Sheet Title: **Grading & Drainage Plan**

Scale: 1"=20'
Designed By: L.A.M. Job Number: 4770-4(E)
Drawn By: G.A.H. Date: 08/28/00
Checked By: L.A.M. Date: 4770GRD.dwg
Sheet Number: **C-102**
of 00

AUG 30 2000

BCH

SITE PLAN