



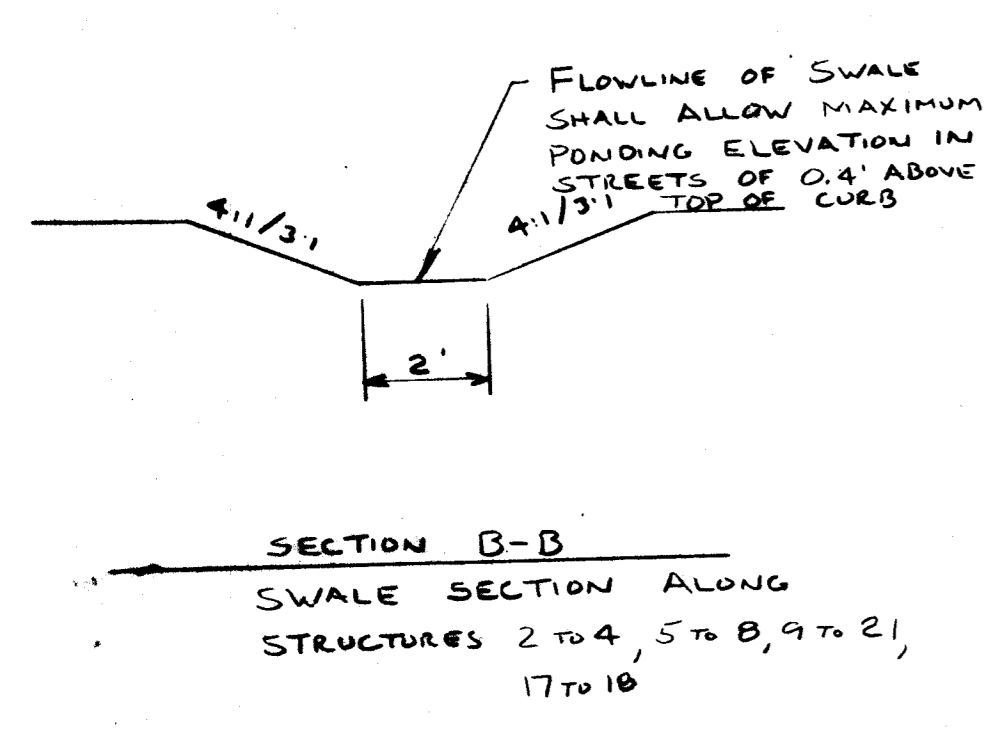
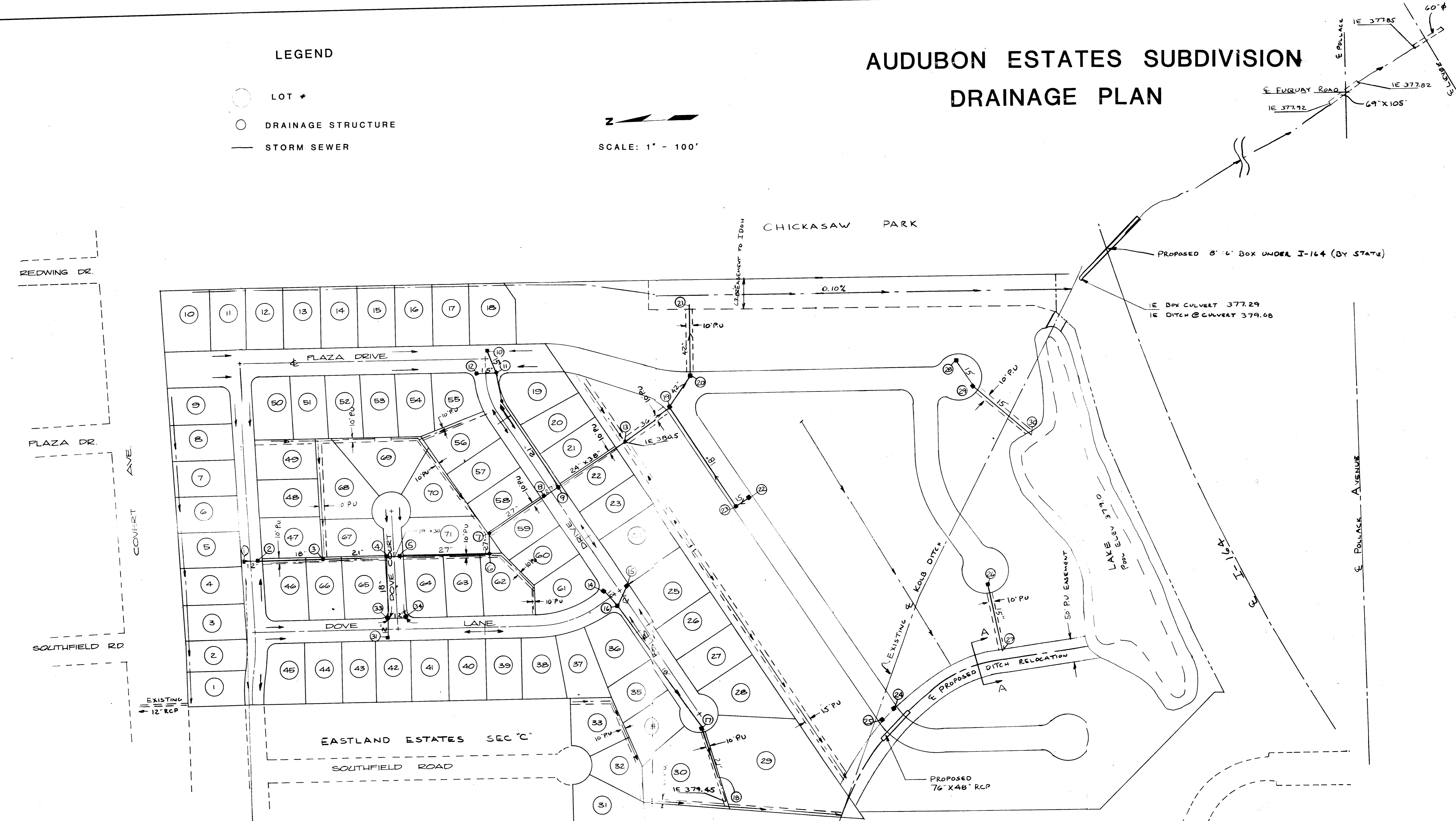


# AUDUBON ESTATES SUBDIVISION DRAINAGE PLAN

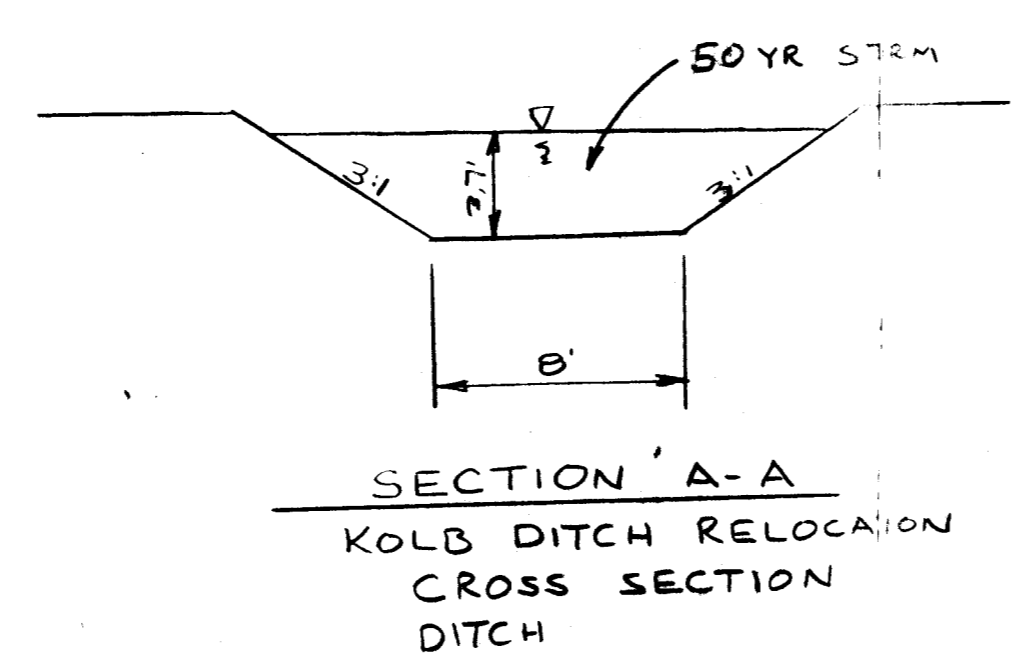
## LEGEND

-  LOT #
-  DRAINAGE STRUCTURE
-  STORM SEWER

  
SCALE: 1" = 100'



TEMPORARY EROSION CONTROL:  
SLOPES OF 0%-6% shall be mulched and seeded, i.e., ryegrass, red top, and wheat (which will be used primarily for fall planting) within 45 days of disturbance of soil and must remain in place until final grading and shaping.  
SLOPES OF MORE THAN 6% shall be straw bales and/or erosion blankets in place with 45 days of disturbance of soil and must remain in place until final grading and shaping.



**DRAINAGE PLANS**  
APPROVED BY VANDERBURGH COUNTY DRAINAGE BOARD  
VANDERBURGH COUNTY, INDIANA  
ROBERT L. WILLNER - PRESIDENT  
RICHARD J. BORRIES - VICE PRESIDENT  
HIRLEY JEAN COX - MEMBER  
BY ..... DATE .....  
RECOMMENDED FOR VAL  
BY ..... TE .....  
COUNTY SURVEYOR

