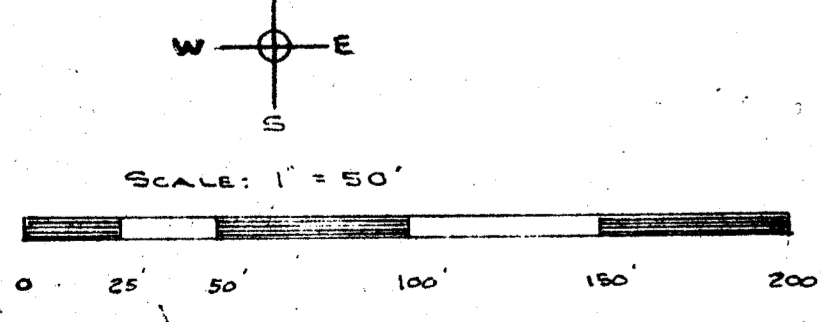
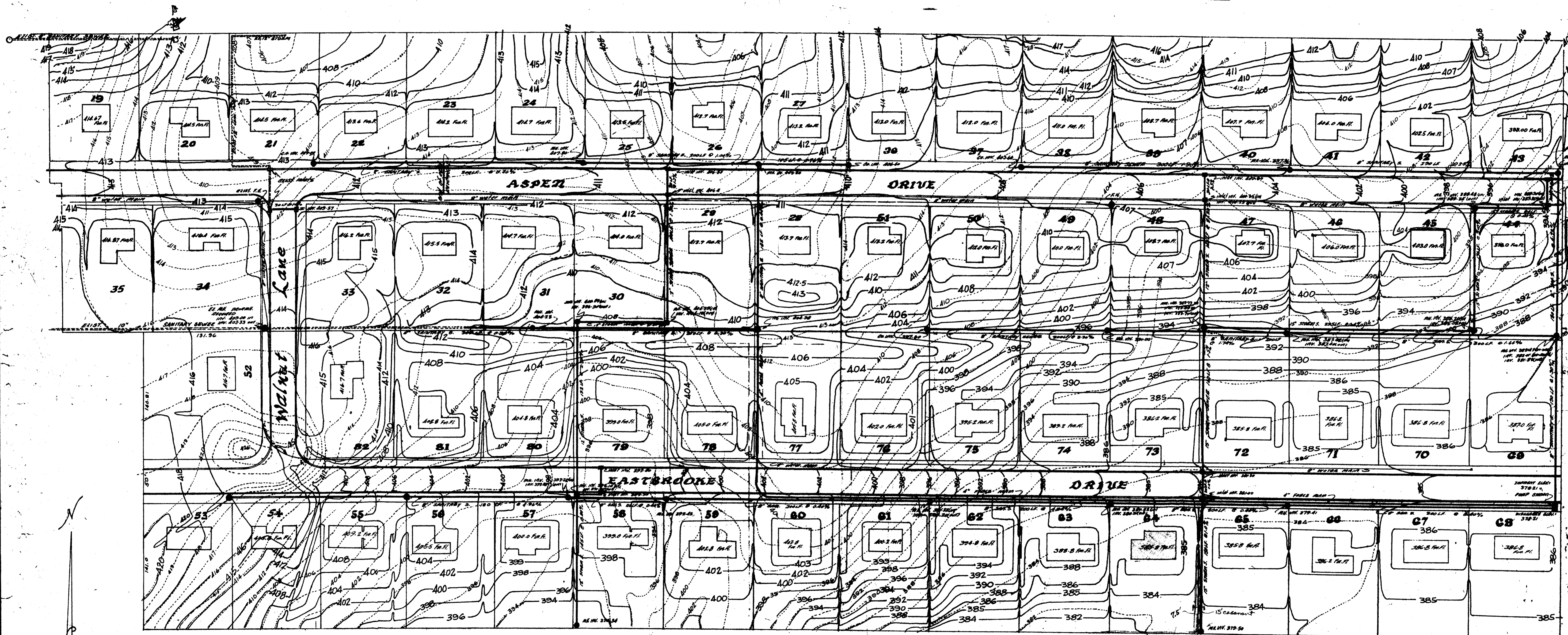


ASPEN RIDGE SUBDIVISION

Development Plan



LEGEND

- 400 — FINISHED CONTAINES
- - - 398 - - - EXISTING CONTAINES
- PROPOSED MANHOLE & SERVICE
- EXISTING MANHOLE & SERVICE

REVISIONS			ASSOCIATED LAND SURVEYORS AND CIVIL ENGINEERS INC.		
NO.	DATE	BY	1323 DIVISION, ST. EVANSVILLE, IND.		
1			ASPEN RIDGE SUBDIVISION		
2			DEVELOPMENT PLAN		
3			DRAWN BY	SCALE	MATERIAL
4			TR.D. LINDSEY	1" = 50'	NO. 100-14
5			CHK'D	DATE	DRAWING NO.
				NOV. 28, 1975	
6			TRACED	APP'D	

Manly map 2-2-68