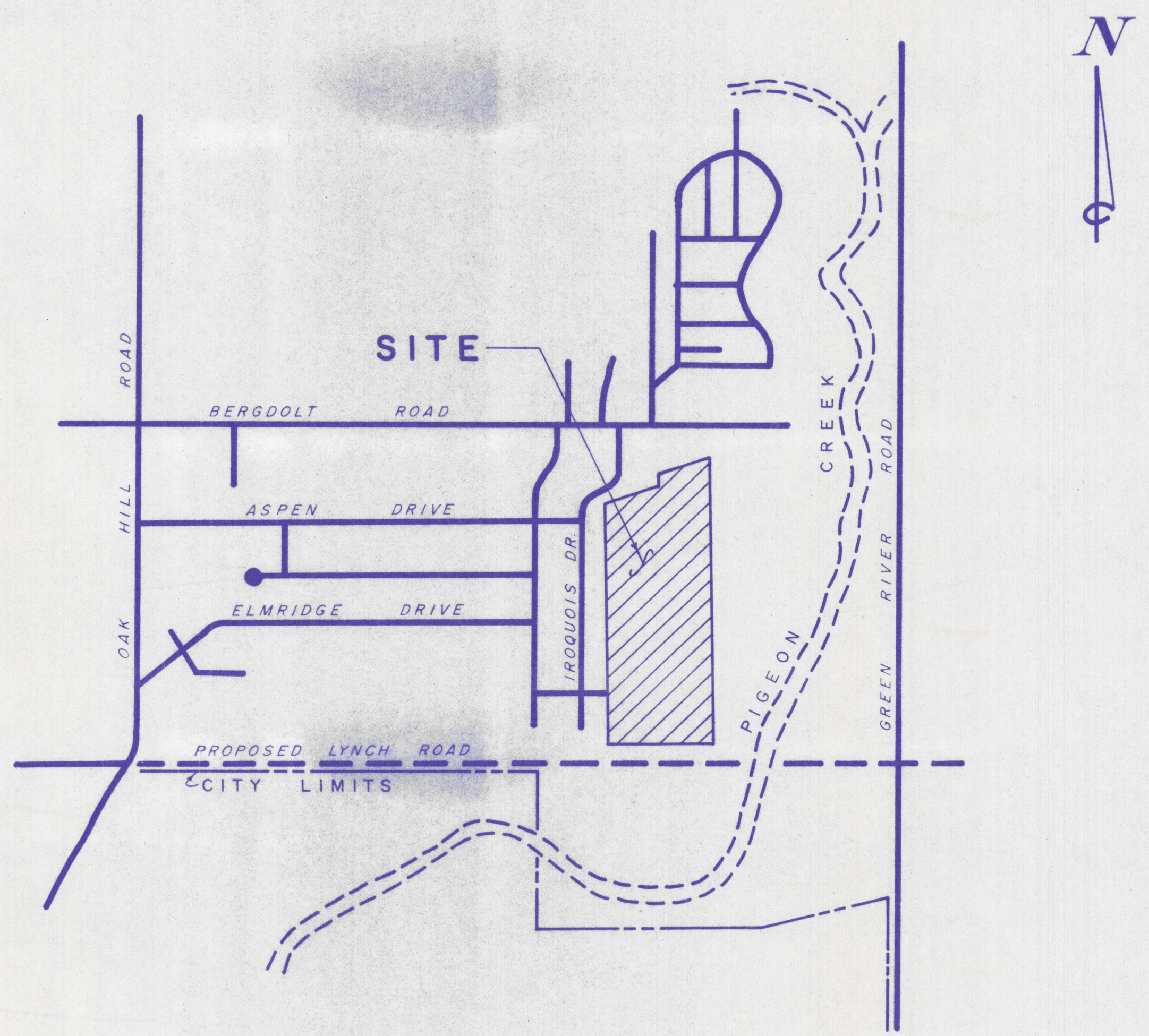


# ASHWOOD

## DEVELOPMENT PLANS



LOCATION MAP

Recommended For Approval John Stel date 3/2/98  
 Vanderburgh County Engineer  
 Approved By VANDERBURGH COUNTY COMMISSIONERS  
Billy La Jarry 3-2-98 date  
John Moulton 3/2/98 date  
John Zuley 3/2/98 date

Plans Certified By Billy T. Micholsch  
 Billy T. Micholsch IN No 7964  
 date 3/2/98

County Auditor  
 date \_\_\_\_\_

**VEACH, NICHOLSON ASSOC.**  
 1830-A W. FRANKLIN ST. EVANSVILLE, IN 47712 (812) 424-2936

DEVELOPED BY \_\_\_\_\_