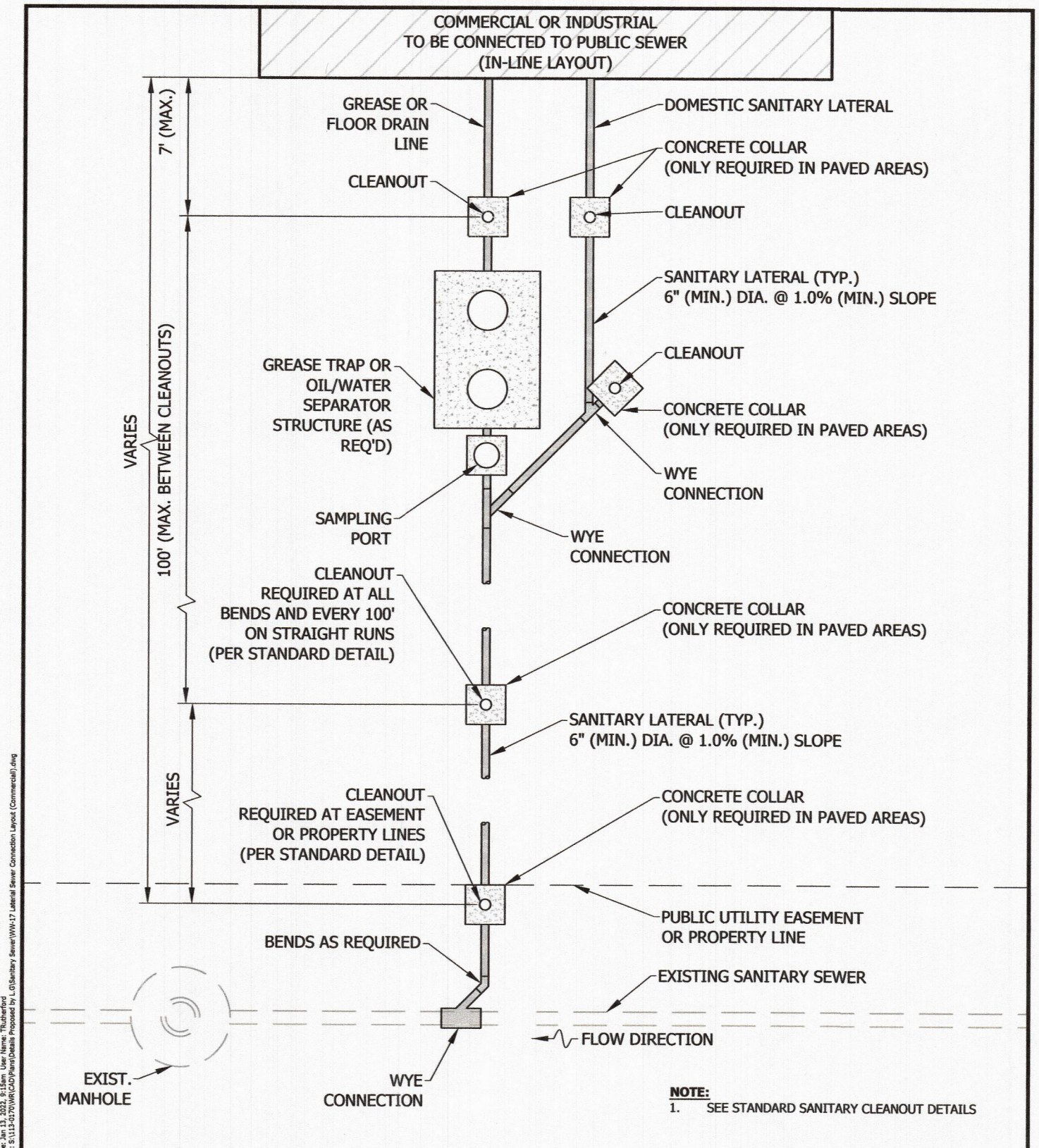


All ideas, designs, calculations, and arrangements indicated or represented by this drawing are owned by and are the property of Morley and Associates, Inc. and were created as instruments of service for use on and in connection with the specified project. Morley and Associates retains all common law, statutory law and other rights, including copyrights. No drawings or electronic files shall be reused for any purpose other than the project. They shall not be disclosed to or be used by any other person or firm without the written prior consent of Morley and Associates, Inc. Written dimensions on these drawings shall have precedence over scale dimensions. Contractors shall verify and be responsible for all dimensions and conditions on the job and Morley and Associates, Inc. must be notified of any variations from the dimensions and conditions shown by these drawings. If differences exist between electronic files and the signed and sealed hard copy drawings, the hard copy shall govern.

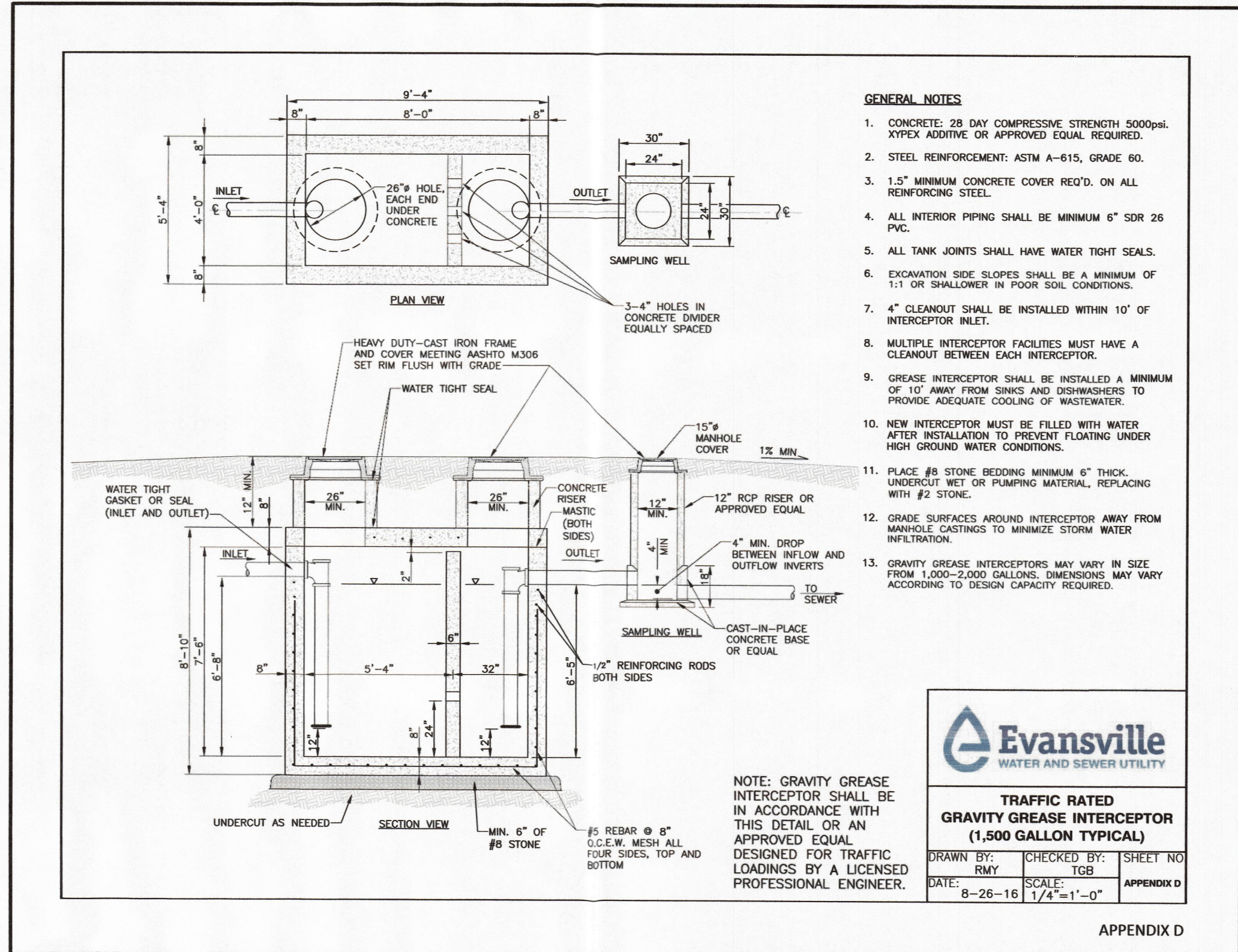
4800 Rosebud Ln., Newburgh, IN 47630  
812.464.5585 Phone 812.464.2514 Fax  
morleycorp.com



JOSEPH D. SLOAN  
REGISTERED  
No. PE10606117  
STATE OF INDIANA  
PROFESSIONAL ENGINEER

**Evansville**  
WATER AND SEWER UTILITY  
**LATERAL SEWER CONNECTION LAYOUT  
(COMMERCIAL)**

Approved: 01/12/2022      Adopted: 01/18/2022      Figure **WW-22**  
Approved By: Joseph D. Sloan, P.E.      Scale: N.T.S.



- GENERAL NOTES**
1. CONCRETE: 28 DAY COMPRESSIVE STRENGTH 5000psi. XYPEX ADDITIVE OR APPROVED EQUAL REQUIRED.
  2. STEEL REINFORCEMENT: ASTM A-615, GRADE 60.
  3. 1.5" MINIMUM CONCRETE COVER REQ'D. ON ALL REINFORCING STEEL.
  4. ALL INTERIOR PIPING SHALL BE MINIMUM 6" SDR 26 PVC.
  5. ALL TANK JOINTS SHALL HAVE WATER TIGHT SEALS.
  6. EXCAVATION SIDE SLOPES SHALL BE A MINIMUM OF 1:1 OR SHALLOWER IN POOR SOIL CONDITIONS.
  7. 4" CLEANOUT SHALL BE INSTALLED WITHIN 10' OF INTERCEPTOR INLET.
  8. MULTIPLE INTERCEPTOR FACILITIES MUST HAVE A CLEANOUT BETWEEN EACH INTERCEPTOR.
  9. GREASE INTERCEPTOR SHALL BE INSTALLED A MINIMUM OF 10' AWAY FROM SINKS AND DISHWASHERS TO PROVIDE ADEQUATE COOLING OF WASTEWATER.
  10. NEW INTERCEPTOR MUST BE FILLED WITH WATER AFTER INSTALLATION TO PREVENT FLOATING UNDER HIGH GROUND WATER CONDITIONS.
  11. PLACE #6 STONE BEDDING MINIMUM 6" THICK. UNDERCUT WET OR PUMPING MATERIAL, REPLACING WITH #2 STONE.
  12. GRADE SURFACES AROUND INTERCEPTOR AWAY FROM MANHOLE CASTINGS TO MINIMIZE STORM WATER INFILTRATION.
  13. GRAVITY GREASE INTERCEPTORS MAY VARY IN SIZE FROM 1,000-2,000 GALLONS. DIMENSIONS MAY VARY ACCORDING TO DESIGN CAPACITY REQUIRED.

**Evansville**  
WATER AND SEWER UTILITY

**TRAFFIC RATED  
GRAVITY GREASE INTERCEPTOR  
(1,500 GALLON TYPICAL)**

DRAWN BY: RMY	CHECKED BY: TGB	SHEET NO. APPENDIX D
DATE: 8-26-16	SCALE: 1/4" = 1'-0"	

Midwest Contracting, Inc.  
for Family Bible Church

**Civil**  
Utility Details

No.	By	Date
<b>Revisions</b>		
<b>Scale: 1" = 40'</b>		
Designed By: <b>AMC</b>	Job Number: 08964.1.003-B	
Drawn By: <b>AMC</b>	Date: 10/17/2022	
Filename: 8964 Civil Base		
Sheet Number: <b>C502</b>		

**APPROVED**  
OCT 25 2022  
VANDERBURGH COUNTY  
DRAINAGE BOARD