

**List of Utility and Official Contacts:**

**CenterPoint Energy**  
201 NW Fourth Street, Suite 306,  
Evansville, IN 47708  
812-435-5773

**AT&T**  
Rob Chapman Jr. (JC7161@att.com)  
Engineering Department  
134 NW Sixth Street, Evansville, IN 47708  
812-464-6055

**Evansville Water and Sewer Utility**  
Doug Ohning (djonohing@ewsu.com)  
Manager of Planning and Development  
PO Box 19, Evansville, IN 47740  
812-421-2120, EXT. 2217

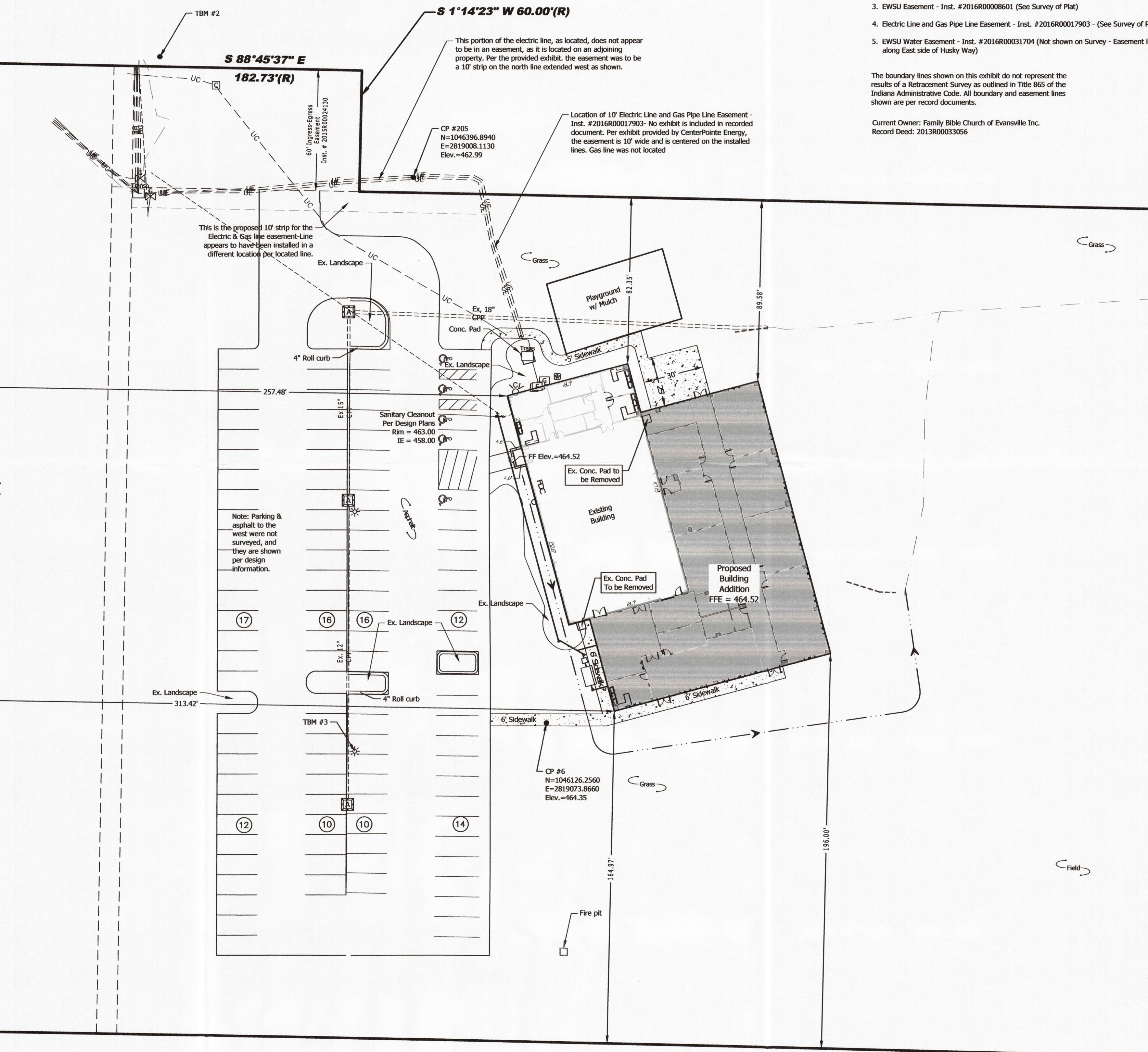
CP #200  
N=1046495.6430  
E=2818809.9530  
Elev.=459.96 (NAVD 1988)

**Spectrum**  
Daryl Hulsey (daryl.hulsey@charter.com)  
Construction Coordinator  
1900 Old Business 41, P.O. Box 4658,  
Evansville, IN 47724-0658  
812-253-2755 Office  
812-305-8348 Cell

**WOW**  
James Fambrough  
(james.fambrough@wowinc.com)  
6045 Wedeking Avenue, Evansville, IN  
47715  
812-437-0395 Office  
812-305-4756 Cell

**Drainage or Public Land Issues in the County**  
Linda Freeman  
(lfreeman@vanderburghsurveyor.com)  
Vanderburgh County Surveyor  
Room 325 Civic Center Complex  
1 NW Martin Luther King Jr Blvd,  
Evansville, IN 47708  
812-435-5210

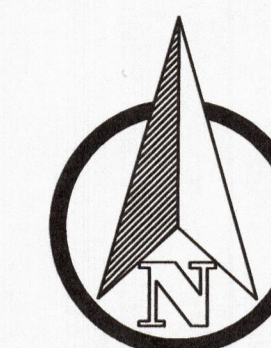
**County Roads and Erosion Issues in the County**  
John Stoll (jstoll@vanderburghgov.org)  
Vanderburgh County Engineer



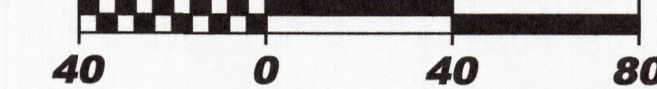
	<b>Indiana Underground Plant Protection Services</b> Notified: September 27, 2022 Ticket Number: 2209270646	
	The underground utility information shown is approximate and has been located from marking placed on the ground by the Indiana Underground Plant Protection Service, drawings provided by the operating utility companies and visible above ground features and may not represent all the underground utility lines that may be in place. No on site soil testing has been performed to verify the locations or depths. All contractors are required by law to contact the underground locate service prior to any digging or disturbance of the surface.	
A. Utilities as marked on ground shown on survey. B. Contractor is responsible to contact the above at 811 prior to any work on site.		

**Existing Legend**

- Air Conditioner Unit
- Area Drain
- Electric Junction Box
- Electric Meter
- Electric Transformer
- Gas Meter
- Irrigation Control Valve
- Light Pole
- Flow Line
- Property Boundary Line
- Handicap Parking Space
- Dr.
- E
- Inst.
- N
- R
- S
- W
- XX Number of Parking Spaces in Row



**SCALE 1" = 40'**



**Proposed Legend**

- Building Addition Footprint
- Sidewalk/Concrete Pavement
- Flowline

**General Notes:**

1. Contractor shall comply with all local, state and federal codes, ordinances, rules, regulations, orders and other legal requirements of municipal authorities which bear on the performance of the work.
2. The contractor is cautioned that the location and/or elevation of existing utilities as shown on these plans is based on records of various utility companies, and where possible measurements taken in the field. The information is not to be relied on as being exact or complete. The contractor must contact the appropriate utility company at least 48 hours before any excavation to request exact field location of utilities.  
Indiana Underground Utility Locate Service  
Phone: 811
3. Material specifications shall be in conformance with applicable portions of the INDOT standard specifications, (latest edition) unless specifically stated otherwise on these plans, contract documents or local code.
4. It is the responsibility of the developer or contractor to obtain all appropriate permits from all the governing agency's that have jurisdiction over the area where the work is proposed to be done.
5. It is the responsibility of the contractor to replace sidewalks, curbs, gutters and/or driveway entrance aprons damaged during construction of their project with like-kind.
6. Erect and maintain all necessary barricades, detour signs, warning signals and lights (in conformance with the Indiana Department of Transportation Work Zone Traffic Control Guidelines: Construction, Traffic, Maintenance, and Utility Operations 2013; Indiana Manual on Uniform Traffic Control Devices for Highway Construction and Maintenance Operations; and Indiana Department of Transportation Standard Specifications - latest edition) and Technical Advisory(s) required to direct traffic safely over or around the place where work is being performed, that in any way interferes with traffic.
7. The contractor shall repair and/or replace all existing utilities, sidewalks, curbs or other existing infrastructure damaged as a result of this project with like-kind.
8. Existing roadways damaged during construction shall be repaired to a condition that is equal to or exceeds current conditions by the contractor to the satisfaction of the governing jurisdiction.
9. Dimensions shown are from face of curb or face of building unless noted otherwise.
10. The contractor shall be responsible for notifying all occupants of interruption to their utilities that will be caused by this project.
11. All areas of new improvements shall comply with the Americans with Disabilities Act (ADA) Accessibility Guidelines (latest edition).
12. Owner and/or Contractor to obtain permission from adjacent land owners if off-site areas are to be disturbed as a part of this project prior commencing work.
13. Contractor shall verify all measurements and be responsible for any mistakes they may make as a result. If the contractor discovers any discrepancies in figures on the drawings, he/she shall report same to the Engineer before proceeding with any work affected by the discrepancy, and shall be held responsible for results should he/she fail to make such effort.
14. Any existing unconsolidated fill and/or utility trenches shall be tested for compaction prior to paving and/or slab construction. Excavation of unconsolidated material and compaction of new material in these areas may be required to prevent future settlement.
15. Transformer Pad to be installed by Contractor Per CenterPoint Energy Specifications. Contractor to Coordinate with CenterPoint Energy.

**Parking Summary**

**General Information:**  
 Existing/Proposed Use = Church  
 Current Zoning Classification = M-2 with Special Use 2  
 Lot Size = 12.83 ac  
 Building Area = 18,050 SF (Existing: 7,237SF Proposed Addition: 10,813SF)

**Parking Information:**  
 Total Number of Seats = 259  
 Total Required Parking Spaces = 78 spaces (0.3 per seat)  
 Total Available Parking Spaces = 107 spaces  
 Available Standard Parking Spaces = 102 spaces  
 Available ADA Parking Spaces = 5 spaces

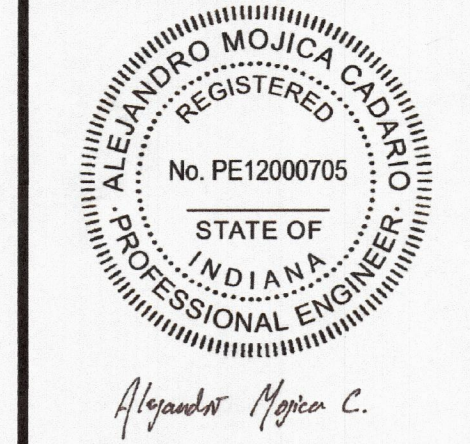
**Landscape Information:**  
 Required Landscape Area = 107 / 15 = 7.13 = 7 x 136 = 952 SF (136 SF per 15 parking spaces)  
 Required Trees = 107 / 30 = 3.57 = 4 (1 tree per 30 parking spaces)  
 Provided Landscape Area = 1,730 SF  
 Provided Trees = 4

**APPROVED**  
OCT 25 2022

VANDERBURGH COUNTY  
DRAINAGE BOARD

**APPROVED**  
AUG 23 2022

VANDERBURGH COUNTY  
DRAINAGE BOARD



All ideas, designs, calculations, and arrangements indicated or represented by this drawing are owned by and are the property of Morley and Associates, Inc. and were created as instruments of service for use on and in connection with the specified project. Morley and Associates retains all common law, statutory law and other rights, including copyrights. No drawings or electronic files shall be reused for any purpose other than the project. They shall not be disclosed to or be used by any other person or firm without the written prior consent of Morley and Associates, Inc. Written dimensions on these drawings shall have precedence over scale dimensions. Contractors shall verify and be responsible for all dimensions and conditions on the job and Morley and Associates, Inc. must be notified of any variations from the dimensions and conditions shown by these drawings. If differences exist between electronic files and the signed and sealed hard copy drawings, the hard copy shall govern.

4800 Rosebud Ln., Newburgh, IN 47360  
812.464.9585 Phone 812.464.2514 Fax  
morleycorp.com

Midwest Contracting, Inc.  
for Family Bible Church

**Civil Site Plan**


**Revisions**

No.	By	Date

Scale: 1" = 40'  
 Designed By: AMC Job Number: 08964-1.003-A  
 Drawn By: AMC Date: 10/17/2022  
 Filename: 8964 Civil Base  
 Sheet Number: **C101**