

N 968000

N 967000

N 966000

N 965000

N 964000

N 963000

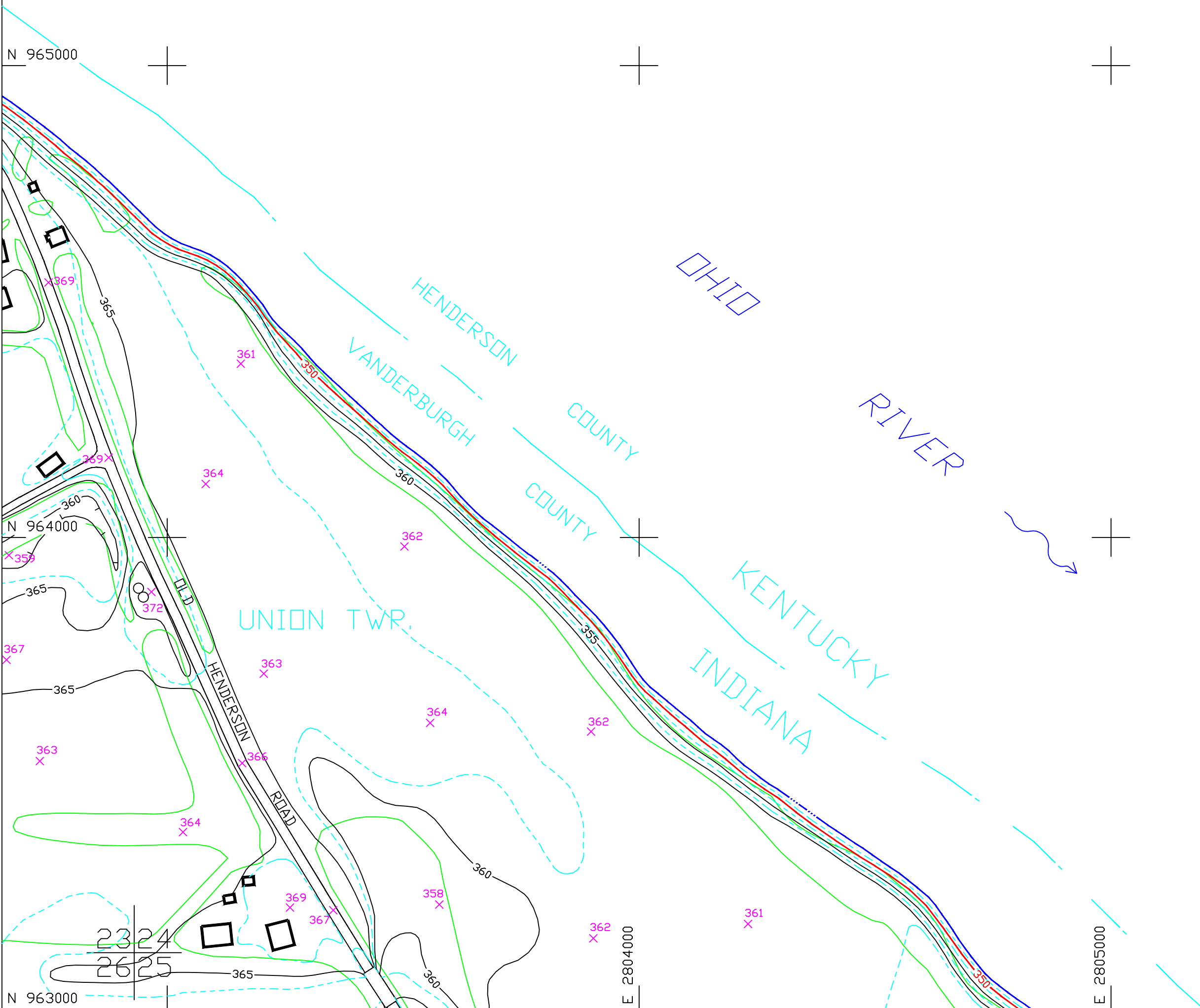
E 2804000

E 2805000

E 2806000

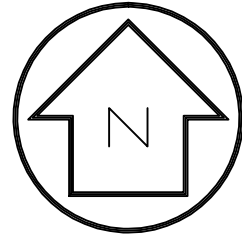
E 2807000

E 2808000



PREPARED BY:  
**KUCERA INTERNATIONAL - INC.**  
 DENVER - CO LAKELAND - FL COLUMBUS -  
 OH PITTSBURGH - PA ST. LOUIS - MO  
 HEADQUARTERS - WILLOUGHBY - OH

SCALE: 1 INCH = 200 FEET  
 DATE OF PHOTOGRAPHY = 03-27-90  
 CONTOUR INTERVAL = 5 FEET  
 WITH 2.5 FEET SUPPLEMENTAL



THE CONTOURS DEPICTED ON THIS MAP WERE COMPILED TO NATIONAL MAP ACCURACY STANDARDS BY KUCERA INTERNATIONAL, INC., WILLOUGHBY, OH, USING PHOTOGRAMMETRIC METHODS FROM AERIAL PHOTOGRAPHY TAKEN 03-27-90. CONTOURS WHICH ARE IN WOODED OR DENSE VEGETATION ARE APPROXIMATIONS ONLY AND SHOULD BE TREATED AS 'DASHED CONTOURS'.  
 THIS MAP IS THE PROPERTY OF THE CITY OF EVANSVILLE, INDIANA AND VANDERBURGH COUNTY, INDIANA. THIS MAP CAN NOT BE REPRODUCED UNLESS PERMISSION IS GRANTED BY THE AREA PLAN COMMISSION OR THE VANDERBURGH COUNTY SURVEYOR'S OFFICE.

SEC. 24 - T7S - R11W  
 TOPOGRAPHIC MAP  
 SHEET 00 OF 317