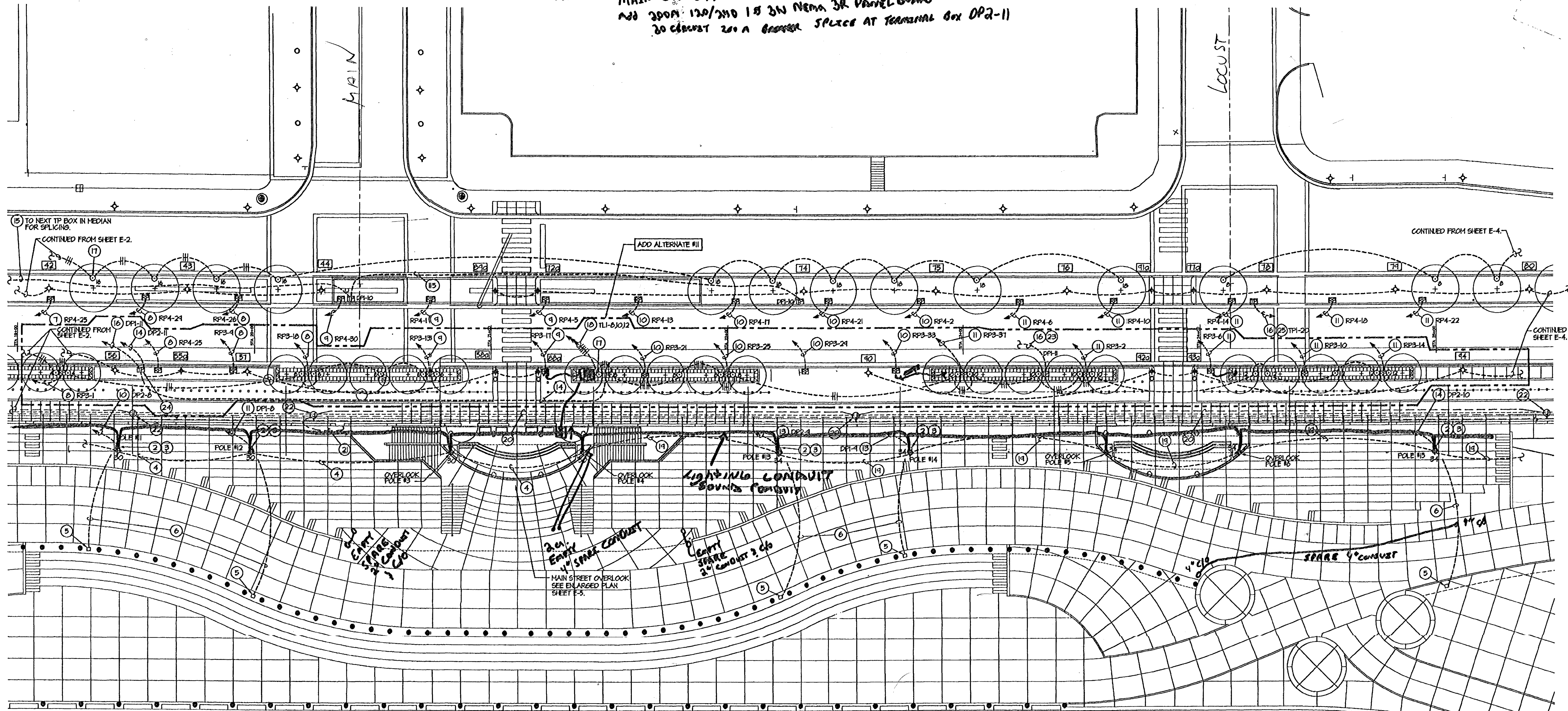


PRE-2 MAIN ST. OVERLOOK
 ADD 200A 120/240 1Ø 3Ø NEMA 3R PANEL BOARD
 20 CIRCUIT 200 A BREAKER SPLICE AT TERMINAL BOX DP2-11



GENERAL NOTES:

- A. SEE DETAIL SHEET E-6 FOR SPECIFICATIONS ON RP RECEPTACLE POWER, 1" TERMINAL POWER AND THE TREE LIGHTING RECEPT. RP 1" TP BOXES AT EXPLANADE SIDE LOCATED AT THE CURB WILL REQUIRE ADDITIONAL CONCRETE REMOVAL (OLD ROADWAY) BELOW BOX PRIOR TO INSTALLATION.
 - B. ALL CONDUITS AND MC CABLE AT MEDIAN AREA SHALL BE ROUTED AS NEAR AS POSSIBLE TO EITHER CURB TO AVOID TREES.
 - C. ALL CONDUITS AND MC CABLES AT EXPLANADE AREA SHALL NOT BE ROUTED IN THE TREE PLANTING AREAS, EXCEPT TO CONNECT TO QUARTZITE BOXES AND TREE RECEPTACLE BOXES. ROUTE ALL CONDUITS AND MC CABLE UNDER EXPLANADE WALKWAY AREAS.
- SIEMCO POLE IDENTIFICATION:**
- [M] - INDICATES RELOCATED EXISTING SIEMCO LANTERN TYPE POLE LIGHTING FIXTURE. ELECTRICAL CONTRACTOR SHALL PROVIDE CONCRETE BASE & 2" CONDUIT. SEE DETAIL SHEET E-6.
 - [E] - INDICATES EXISTING SIEMCO LANTERN TYPE POLE LIGHTING FIXTURE THAT REMAINED. RECONNECT TO EXISTING UNDERGROUND 2" CONDUITS.
- POWER BOX LEGEND:**
- [TB] - INDICATES TERMINAL POWER BOX. SEE DETAIL, SHEET E-6.
 - [RB] - INDICATES RECEPTACLE POWER BOX. SEE DETAIL, SHEET E-6.

ELECTRICAL NOTES:

- 1 EXISTING SIEMCO HANDHOLE UTILIZE FOR 2" CONDUIT TERMINATIONS AND EXTENSIONS.
- 2 100A, 240V, 1Ø PIN AND SLEEVE CONNECTOR EQUAL TO HUBBELL #M40002R-2B10002H PLUS EQUAL TO HUBBELL #M40002R. FURNISH PLUS TO OWNER. SEE SHEET S-21 & S-22 FOR DEVICE LOCATION.
- 3 LIGHTING BEACON FURNISHED BY OTHERS. ELECTRICAL CONTRACTOR SHALL PROVIDE CONNECTION TO LIGHTING FIXTURE AND SOUND CONDUIT STUB-OUT INTO BASE OF BEACON. COORDINATE WITH "SR" DRAWINGS AND SHEETS S-21 & S-22.
- 4 ONE (1) - 2" CONDUIT (#1421106 FOR LIGHTING) & ONE (1) - 1-1/2" CONDUIT (SOUND). SEE SHEET S-22.
- 5 EQUAL TO QUARTZITE # P61824E1A2-11. INSTALL FLUSH IN CONCRETE.
- 6 1-4" PVC #40 CONDUIT. SEE DETAIL OF SHEET E-6.
- 7 EQUAL TO STABILITY TYPE MC CABLE #2, 3 CONDUCTOR TL WITH GROUND AND PVC JACKET OVER ARMOR.
- 8 EQUAL TO STABILITY TYPE MC CABLE #1, 3 CONDUCTOR WITH GROUND AND PVC JACKET OVER ARMOR.
- 9 EQUAL TO STABILITY TYPE MC CABLE #10, 3 CONDUCTOR WITH GROUND AND PVC JACKET OVER ARMOR.
- 10 EQUAL TO STABILITY TYPE MC CABLE #210, 3 CONDUCTOR WITH GROUND AND PVC JACKET OVER ARMOR.
- 11 EQUAL TO STABILITY TYPE MC CABLE #30, 3 CONDUCTOR WITH GROUND AND PVC JACKET OVER ARMOR.
- 12 EQUAL TO STABILITY TYPE MC CABLE #40, 3 CONDUCTOR WITH GROUND AND PVC JACKET OVER ARMOR.
- 13 EQUAL TO STABILITY TYPE MC CABLE #250KCHIL, 3 CONDUCTOR WITH GROUND AND PVC JACKET OVER ARMOR.
- 14 EQUAL TO STABILITY TYPE MC CABLE #300KCHIL, 3 CONDUCTOR WITH GROUND AND PVC JACKET OVER ARMOR.
- 15 EQUAL TO STABILITY TYPE MC CABLE #300KCHIL, 3 CONDUCTOR WITH GROUND AND PVC JACKET OVER ARMOR.
- 16 EQUAL TO STABILITY TYPE MC CABLE #300KCHIL, 3 CONDUCTOR WITH GROUND AND PVC JACKET OVER ARMOR.
- 17 CONTINUE TREE LIGHT RECEPTACLE CIRCUITING FROM THIS POINT WITH #8 IN 1" C.
- 18 5/8" 1186 IN 1/2" UNTIL NOTED OTHERWISE. --- 3, C12.
- 19 ONE (1) - 2" CONDUIT (#1421106 FOR LIGHTING) & ONE (1) - 1-1/2" CONDUIT (SOUND). SEE SHEET S-22.
- 20 1 1/4" C. FOR TELEPHONE CABLES (FSD). EXTEND UNDERGROUND BETWEEN TWO EXISTING TELEPHONE FULL BOXES IN LEVEE HALL. CONTRACTOR RESPONSIBLE FOR PATCHING & REPAIRING EXPLANADE SURFACE TO MATCH EXISTING SURFACE.

- 21 1 1/4" C. FOR TELEPHONE FULL BOX AT MAIN STREET OVERLOOK. SEE SHEET E-5.
- 22 EXISTING TELEPHONE FULL BOX IN LEVEE HALL.
- 23 TO TERMINAL BOX BETWEEN POLES [56] AND [55] FOR SPLICING.
- 24 UTILIZE THIS TERMINAL BOX FOR WATERTIGHT SPLICING FOR CIRCUIT DP1-11.
- 25 TO TERMINAL BOX BETWEEN POLES [55] AND [57] FOR SPLICING. SEE SHEET E-4.

SURVEYING, CIVIL & STRUCTURAL ENGINEERING

BERNARDIN · LOCHMUELLER & ASSOC., INC.
 ENGINEERING SURVEYING PLANNING ENVIRONMENTAL SERVICES
 8200 Vogel Road, Evansville, IN 47715 (812)479-8200

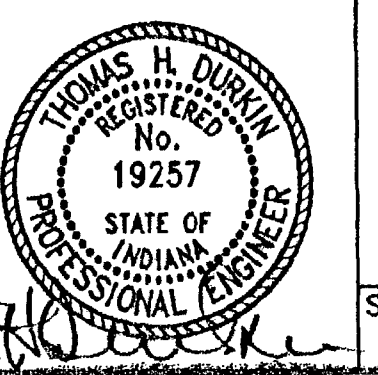
URBAN DESIGN & LANDSCAPE ARCHITECTURE

STORROW KINSELLA PARTNERSHIP INC
 212 WEST 10TH STREET, SUITE BLDG. A-440, INDIANAPOLIS, IN 46202 317 630 3420

PRINCIPAL ARCHITECT

VEAZEY PARROTT & SHOULDERS
 ARCHITECTS ENGINEERS PLANNERS
 628 Main Street, Suite 400, Evansville, IN 47708

| REVISIONS | | DESIGN BY: | TM |
|-----------|-------------|------------|----|
| NO. | DESCRIPTION | DATE | |
| | | | |
| | | | |
| | | | |
| | | | |
| | | | |
| | | | |
| | | | |



STATION 19+00 THRU 26+00 - LIGHTING/POWER PLAN

FOR EVANSVILLE DOWNTOWN RIVERFRONT RENOVATION PROJECT
 EVANSVILLE, INDIANA

SCALE: 1" = 20'
 DATE: 07/01/99
 SHEET: E-3